

FOR LEASE

UP TO 15,800± SF

Phoenix Business Center

701-725 W. Hundred Road | Chester, VA 23836



COMMONWEALTH
COMMERCIAL
Comprehensive Property Solutions



PROPERTY HIGHLIGHTS

- › Up to 15,800± SF available, divisible
- › Suitable for Flex or Office tenants
- › Landlord may subdivide suites
- › Each suite contains rear 10' x 12' drive in door, 3-Phase 200 Amp power, 13.5' - 12' clear
- › Leveled ground across all parcels
- › Nice storefronts
- › Ample parking
- › Lease Rate: \$11.00 - \$11.75/SF, includes RE Taxes and building insurance

FOR MORE INFORMATION:

BEN BRUNI, SIOR

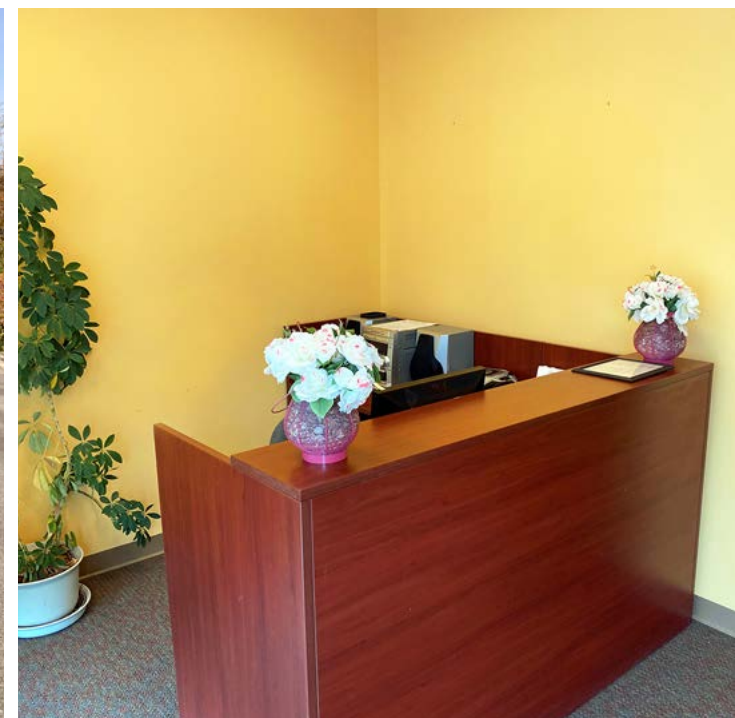
Senior Vice President | Partner

804-793-0046

bbruni@commonwealthcommercial.com

Commonwealth Commercial Partners, LLC represents the Owner of this property. Information contained herein is deemed reliable but is not guaranteed.

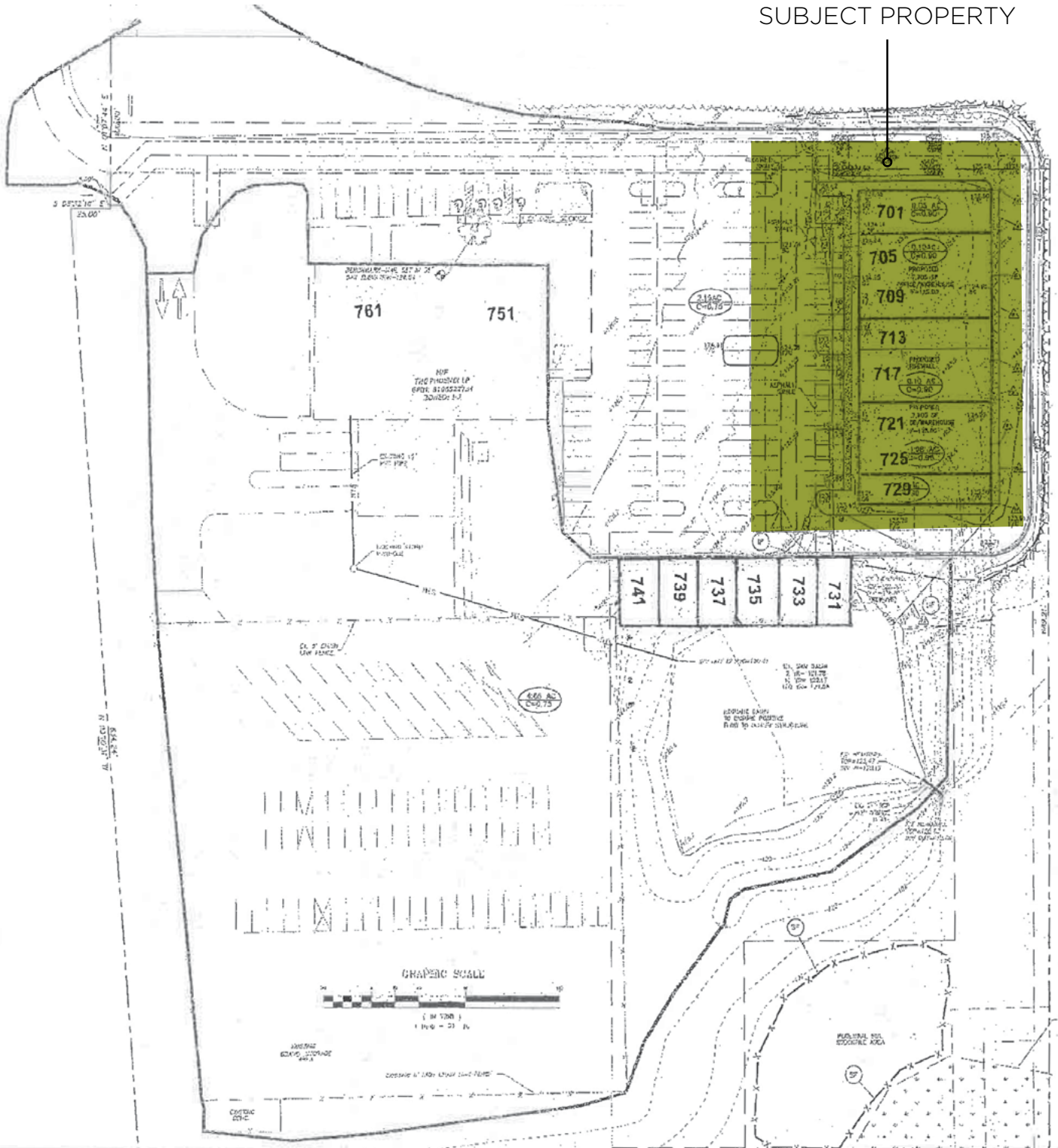
PROPERTY PHOTOS



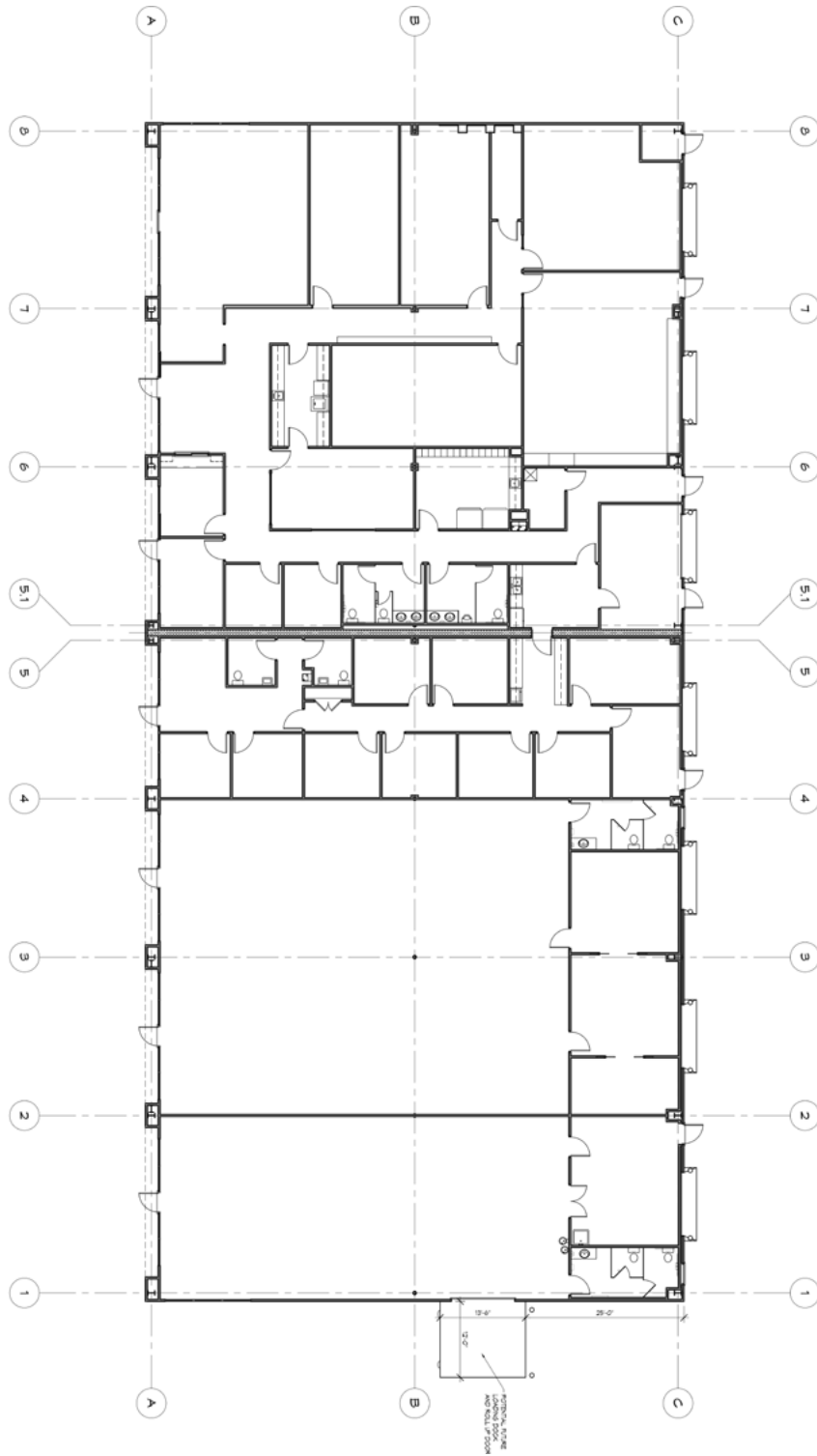
FOR LEASE | 701-725 W. HUNDRED ROAD | CHESTER, VA 23836

SITE PLAN

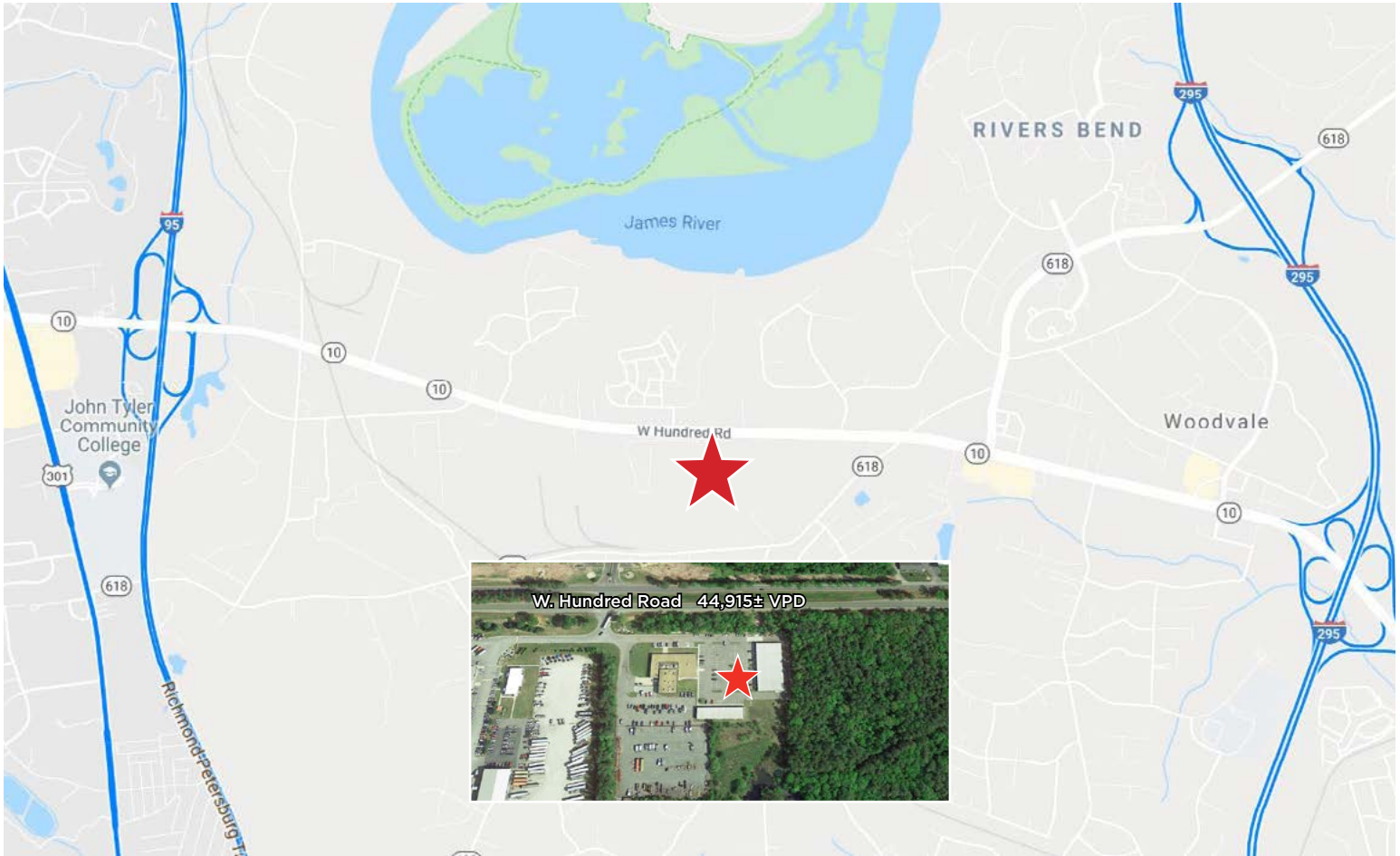
SUBJECT PROPERTY



FLOOR PLAN



VICINITY MAP



DEMOGRAPHICS	1 MILE	3 MILE	5 MILE
2022 POPULATION	2,216	22,218	64,655
AVERAGE HH INCOME	\$122,703	\$93,366	\$26,037
DAYTIME EMPLOYEES	1,312	13,964	26,037