

FOR LEASE

AMPLE PARKING

Parham Professional Park

2821 N Parham Road | Henrico, VA 23294



COMMONWEALTH
COMMERCIAL
Comprehensive Property Solutions



PROPERTY HIGHLIGHTS

- › 1,203 - 3,022± RSF office and/or medical office space on N Parham Road
- › Available immediately
- › Recent renovations include new common area flooring, paint, restrooms, landscaping, roof, and HVAC
- › Ample parking and nearby dining/retail amenities available
- › Easy access to I-64 and W Broad Street
- › Onsite Ownership
- › Leasing rate: \$16.50 PSF, net of janitorial services

DEMOGRAPHICS	1 MILE	3 MILE	5 MILE
TOTAL POPULATION	12,702	98,780	210,953
AVERAGE HH INCOME	\$73,511	\$90,624	\$113,801
DAYTIME EMPLOYEES	8,270	81,907	150,795

FOR MORE INFORMATION:

ERIC HAMMOND

Senior Vice President

804-793-0049

ehammond@commonwealthcommercial.com

TODD BUTTNER

Senior Associate

804-793-0059

tbuttner@commonwealthcommercial.com

Commonwealth Commercial Partners, LLC represents the Landlord of this property. Information contained herein is deemed reliable but is not guaranteed.

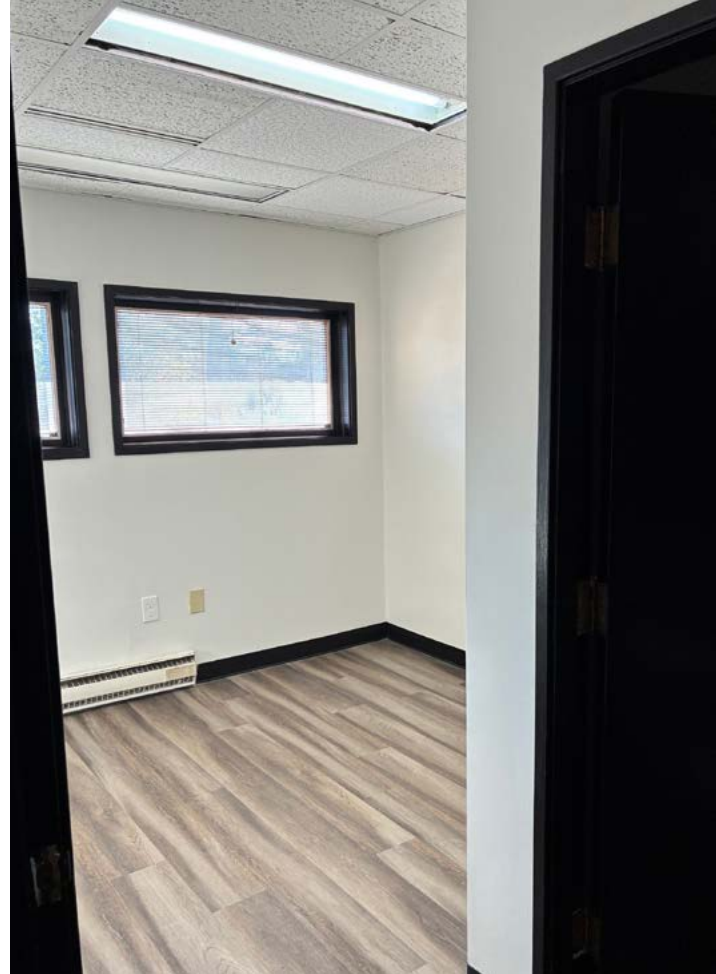
FLOOR PLANS

Lower Level

Suite 105 - 1,203± RSF

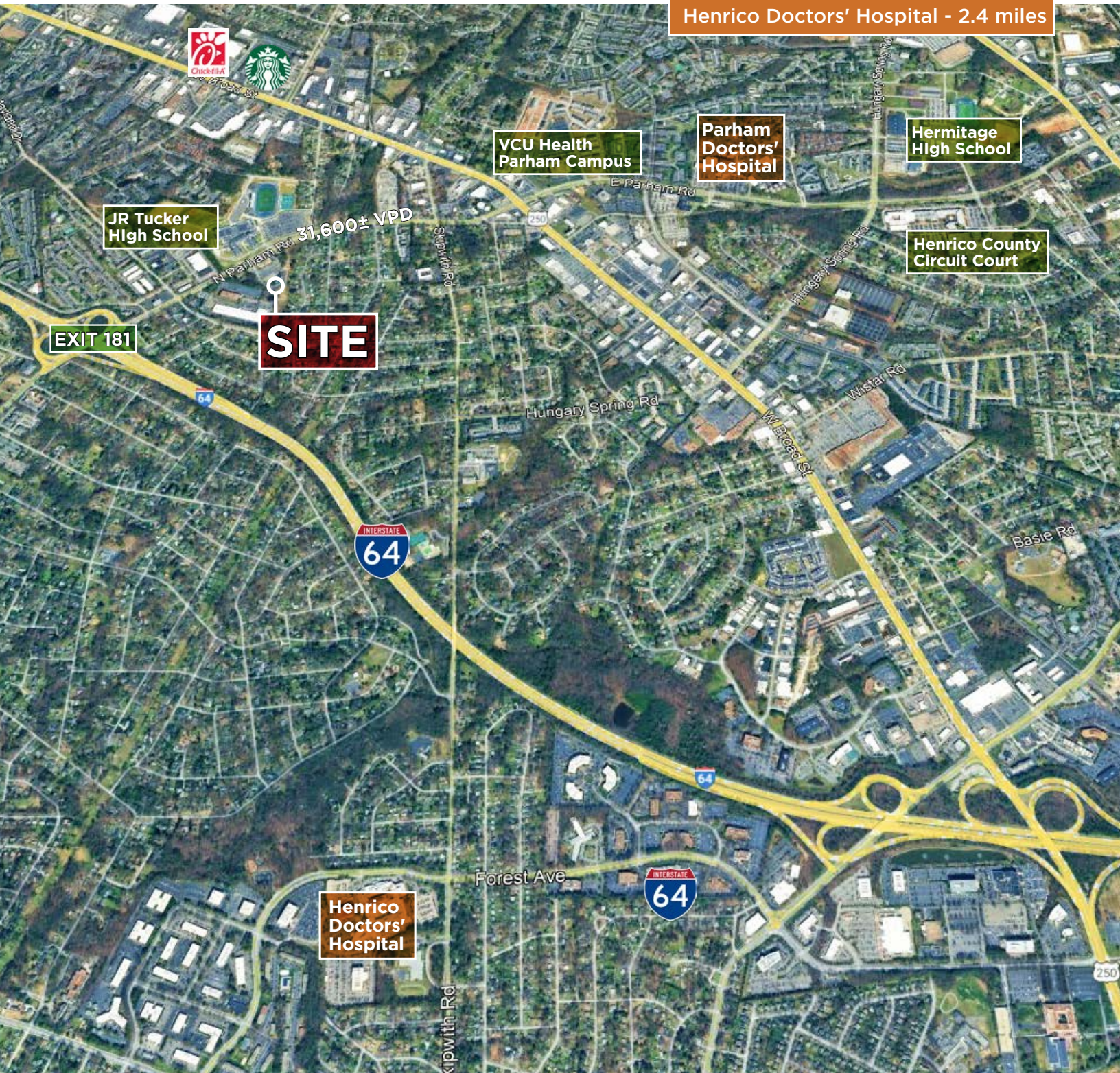
Suite 106 - 1,819± RSF





FOR LEASE | 2821 N PARHAM ROAD | HENRICO, VA 23294

SURROUNDING AREA



Parham Doctors' Hospital - 1.3 miles
Henrico Doctors' Hospital - 2.4 miles

VCU Health
Parham Campus

Parham
Doctors'
Hospital

Hermitage
High School

Henrico County
Circuit Court

JR Tucker
High School

SITE

EXIT 181

Henrico
Doctors'
Hospital