

FOR LEASE

GREAT LOCATION

West Creek Medical Park

1630 Wilkes Ridge Parkway | Henrico, VA 23233



COMMONWEALTH
COMMERCIAL
Comprehensive Property Solutions



West Creek Medical Park

PROPERTY HIGHLIGHTS

Class A Medical/Office Building located in West Creek Medical Park.

- › 1,254 to 4,614± SF available
- › Gorgeous, LEED certified sustainable facility
- › Excellent, signalized access to W. Broad Street and immediate proximity to Rte. 288
- › Abundant parking available on site (5 spaces per 1,000± SF)
- › Lease Rate: \$28/SF, NNN

JOIN A THRIVING MEDICAL COMMUNITY

MEDARVA
WEST CREEK SURGERY CENTER



VCS

NATIONAL
**Spine
& Pain
CENTERS**



RICHMOND
PLASTIC SURGEONS



**EXECUTIVE
HEALTH GROUP**

rga Richmond
Gastroenterology
Associates

virginia physicians
FOR WOMEN

FOR MORE INFORMATION:

TUCKER DOWDY, SIOR

Senior Vice President | Partner

804-228-4932

tdowdy@commonwealthcommercial.com

JAMIE GALANTI, CCIM, SIOR

Senior Vice President | Partner

804-433-1825

jgalanti@commonwealthcommercial.com

Commonwealth Commercial Partners, LLC represents the Landlord of this property. Information contained herein is deemed reliable but is not guaranteed.

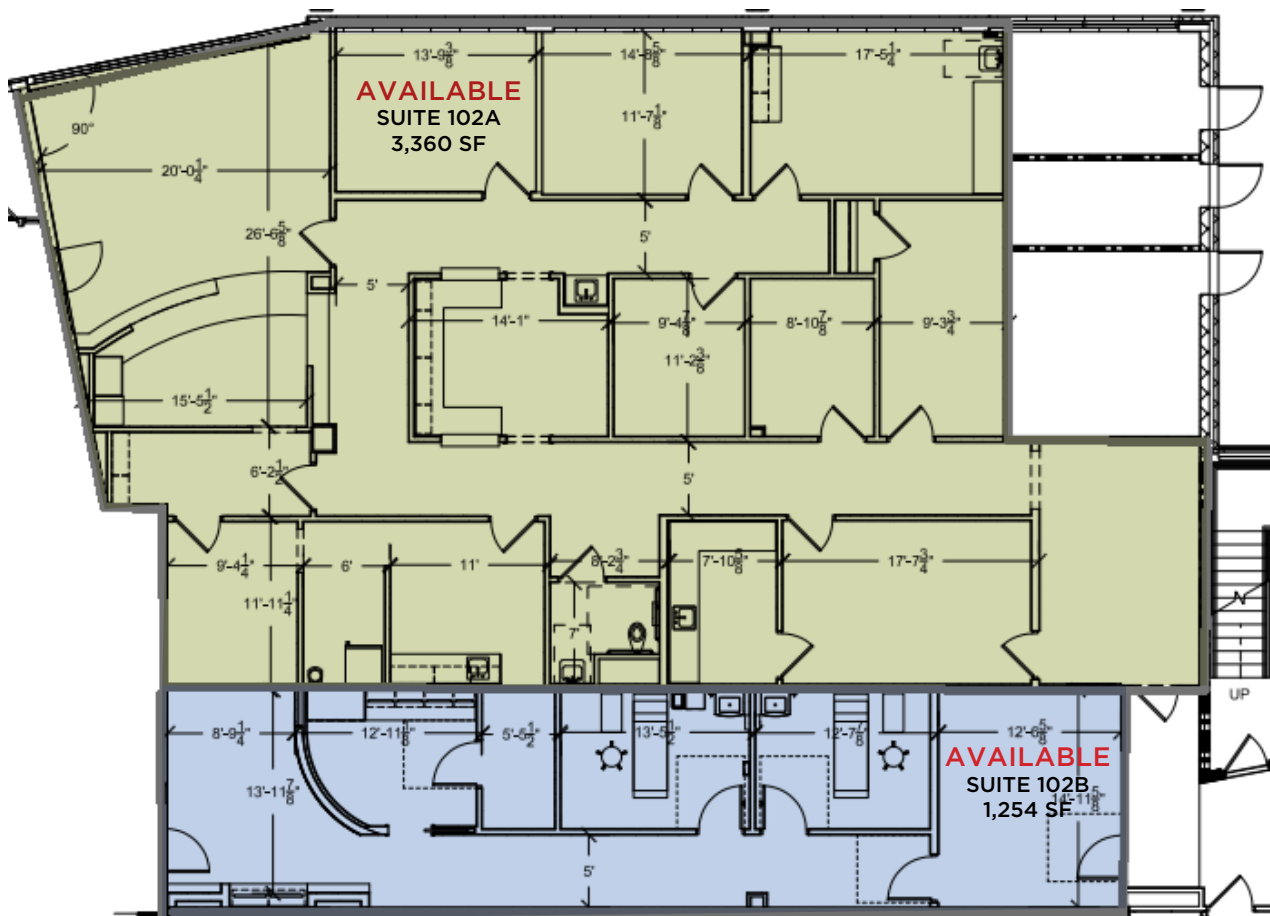
FLOOR PLANS

AVAILABLE

Suite 102A: 3,360± SF

Suite 102B: 1,254± SF

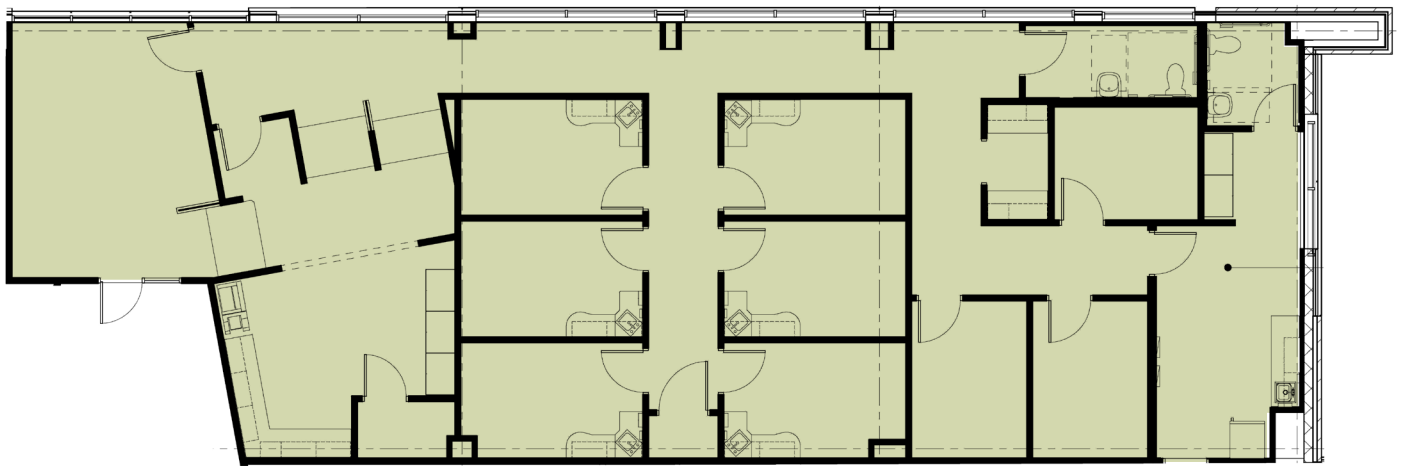
Can be combined for 4,614± SF



FLOOR PLANS

AVAILABLE

Suite 202: 2,954± SF

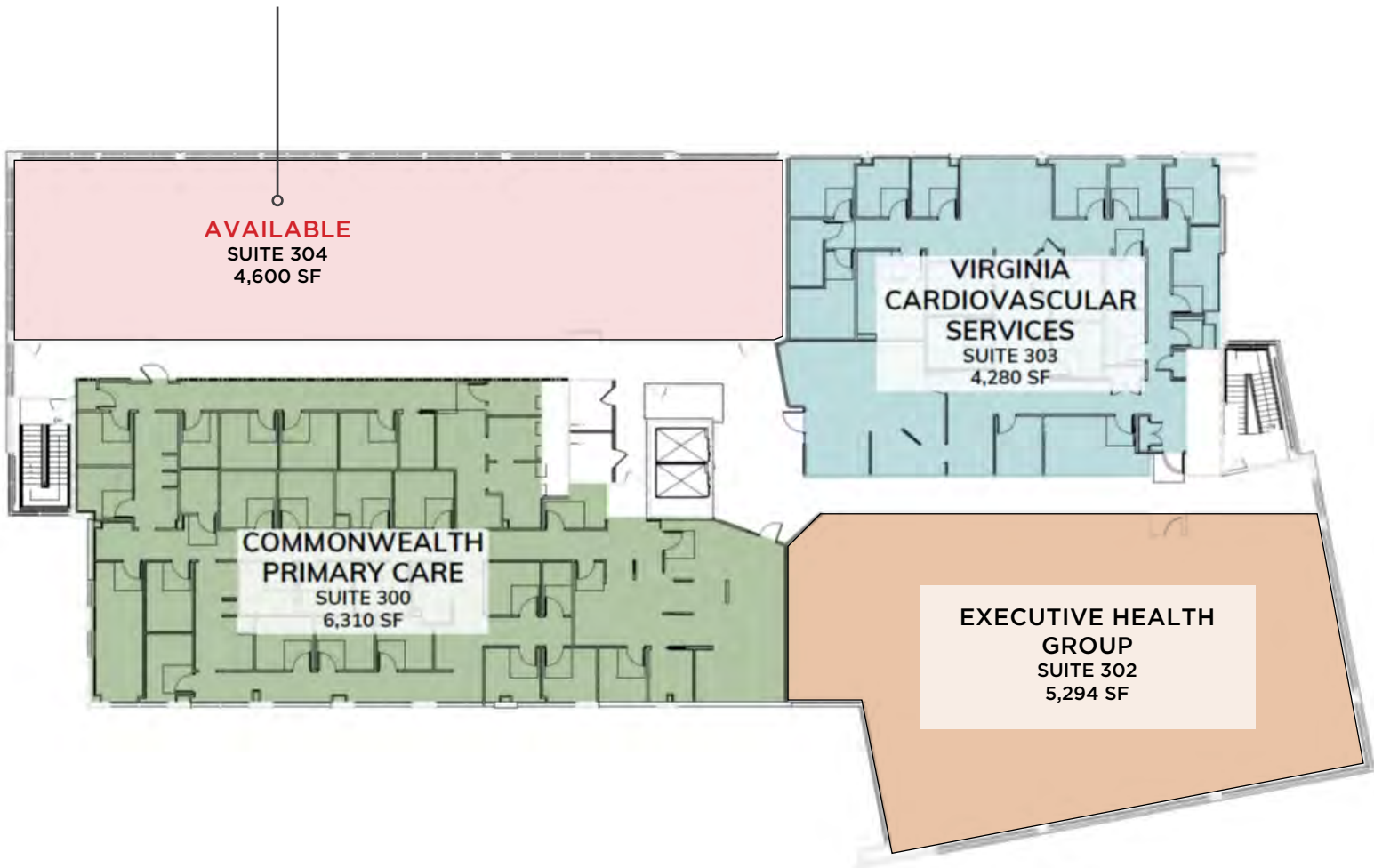


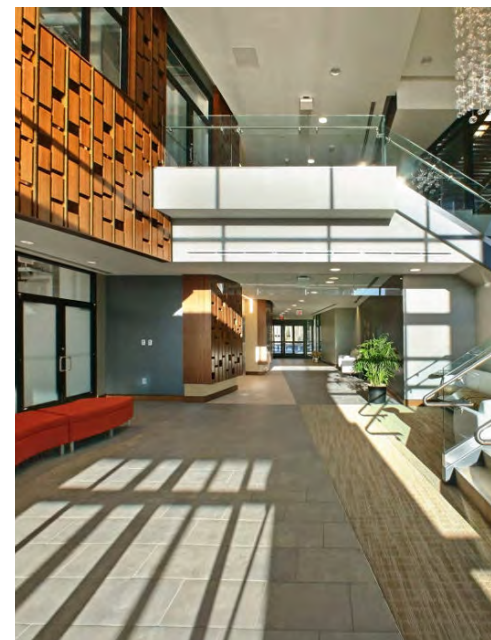
FLOOR PLANS

AVAILABLE

Suite 304: 2,000 - 4,600± SF

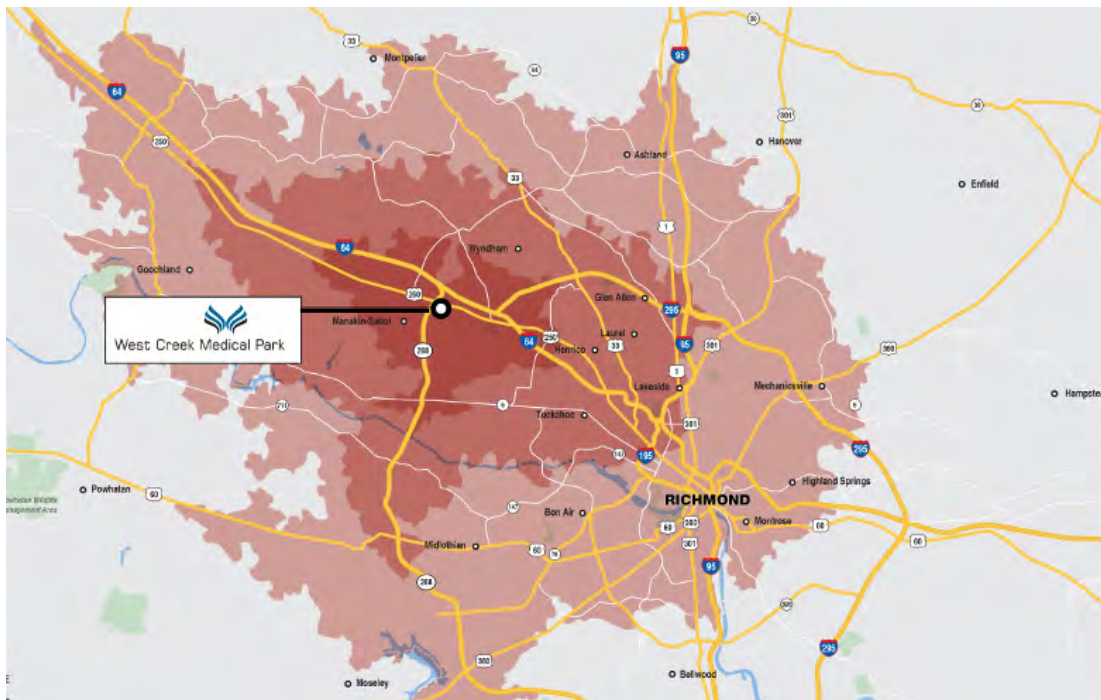
Currently shell space that can be subdivided down to 2,000 SF





FOR LEASE | 1630 WILKES RIDGE PARKWAY | HENRICO, VA 23233

LOCATION IS EVERYTHING



- 7 MINUTE DRIVE TIME
- 15 MINUTE DRIVE TIME
- 25 MINUTE DRIVE TIME



FOR LEASE | 1630 WILKES RIDGE PARKWAY | HENRICO, VA 23233