

**SUB
LEASE**

NATURAL LIGHT

Libbie Law Center

2201 Libbie Avenue | Richmond, VA 23230



**COMMONWEALTH
COMMERCIAL**
Comprehensive Property Solutions



PROPERTY HIGHLIGHTS

- › 5,780± RSF space available March 1, 2026
- › Excellent natural light throughout the space
- › Can be fully furnished
- › Abundant parking available
- › Monument signage available
- › Lease term expires August 31, 2027
- › Lease Rate: \$15.00 PSF, Full service

DEMOGRAPHICS	1 MILE	3 MILE	5 MILE
POPULATION	8,508	90,787	259,853
AVERAGE HH INCOME	\$116,517	\$139,675	\$122,732
DAYTIME EMPLOYEE	18,427	81,819	151,490

FOR MORE INFORMATION:

MADDIE STRIEFFLER

Sales & Leasing Associate

804-793-0050

mstrieffler@commonwealthcommercial.com

ERIC HAMMOND

Senior Vice President

804-241-5304

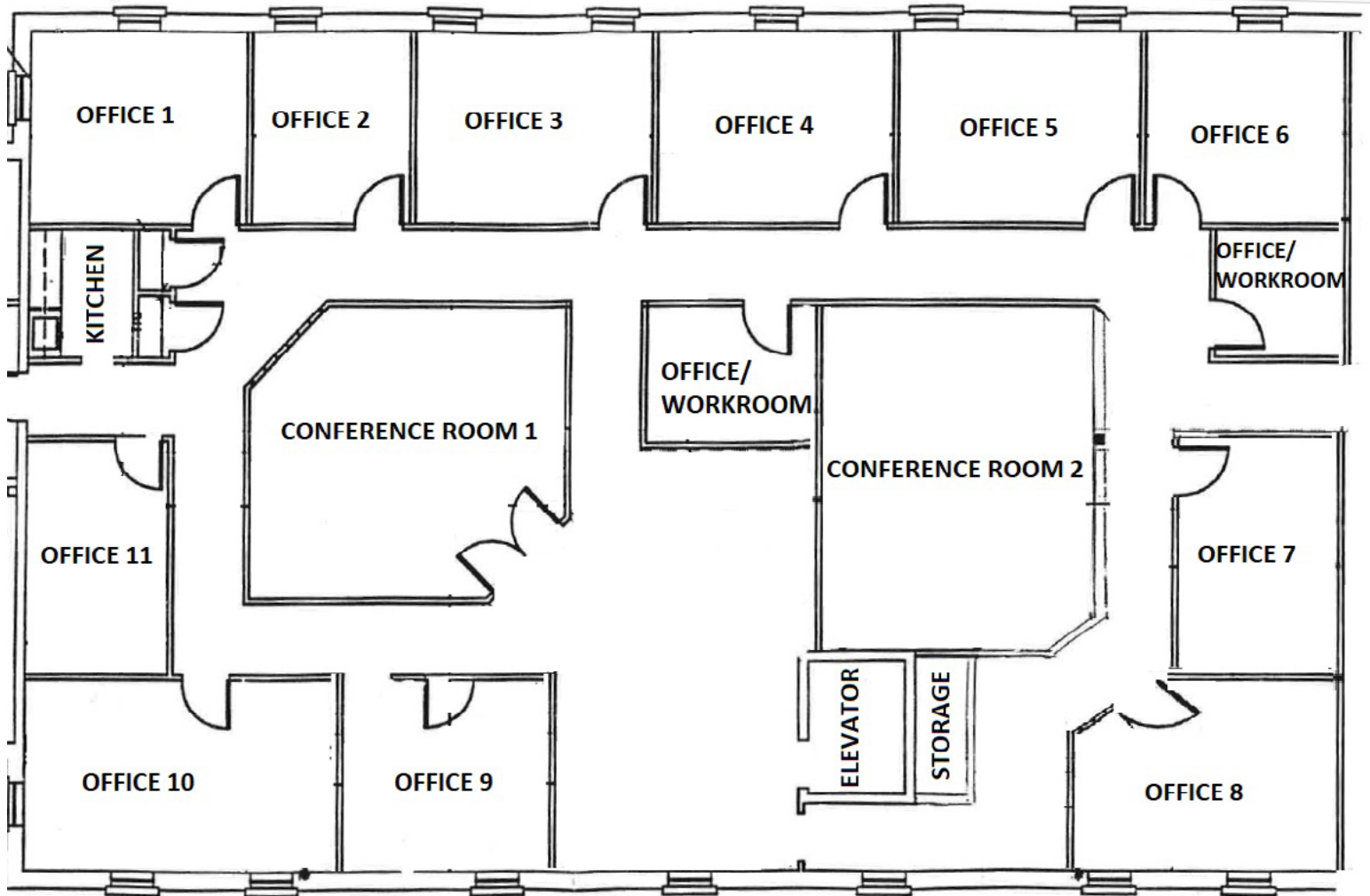
ehammond@commonwealthcommercial.com

Commonwealth Commercial Partners, LLC represents the Landlord of this property. Information contained herein is deemed reliable but is not guaranteed.



FLOOR PLAN

5,780± SF space

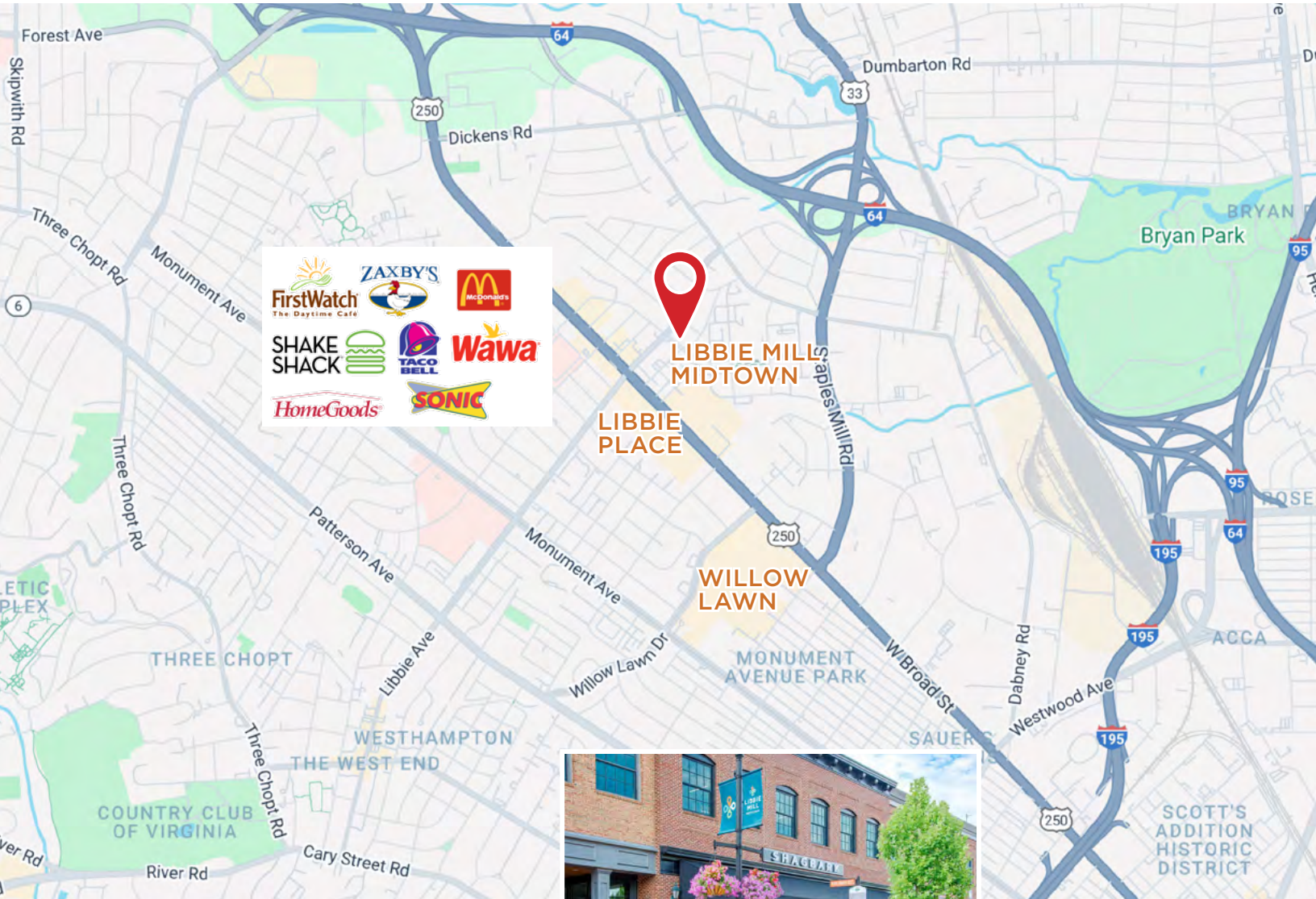


THE SHOPS AT WILLOW LAWN

It offers a variety of retail and dining options, making it a popular destination for both locals and visitors.



3 Minutes
0.8 Miles



LIBBIE PLACE SHOPPING CENTER

The shopping center offers a variety of retail options and is known for its convenient location and accessibility.



1 Minutes



2 Minutes
0.5 Miles

LIBBIE MILL MIDTOWN

located between Staples Mill Road and Libbie Avenue, just south of I-64.

