

# For Sale | 268.6 Acres

Holly Farms Road, Burkeville, VA 23922

PRICE: \$875,000 (\$3,236/AC) ▪ NOTTOWAY COUNTY



**COMMONWEALTH**  
LAND, FARM & FORESTRY



## Flat Creek Features

- 99± Acres | 5± Year-Old Planted Loblolly Pine
- 10± Acres natural duck swamp; balance in mature hardwood & pine
- Tax Parcels: 3-64, 3-66 (Nottoway Co.); 50-5A, 50-5B (Amelia Co.)
- Extensive frontage on Holly Farms Road (Rt. 307)
- Surveys on record

LATITUDE & LONGITUDE: 37.27690 N, 78.18048 W



4198 Cox Road, Suite 200  
Glen Allen, VA 23060

o: 804-346-4966

[commonwealthcommercial.com](http://commonwealthcommercial.com)

Commonwealth represents the Owner of this property. Information contained herein, is deemed reliable but not guaranteed.

For More Information:

### Brian Reinhart

Registered Consulting Forester NC1688  
Licensed Forester SC1812

Associate - Land Sales

c: 757-784-2720

[breinhart@commonwealthland.com](mailto:breinhart@commonwealthland.com)

### Brent Altaffer

Vice President - Land Sales

o: 804-793-0055

[baltaffer@commonwealthland.com](mailto:baltaffer@commonwealthland.com)

### Scott Pittman

Associate - Land Sales

o: 804-228-4925

[spittman@commonwealthland.com](mailto:spittman@commonwealthland.com)

### Michael Chapman

Associate - Land Sales

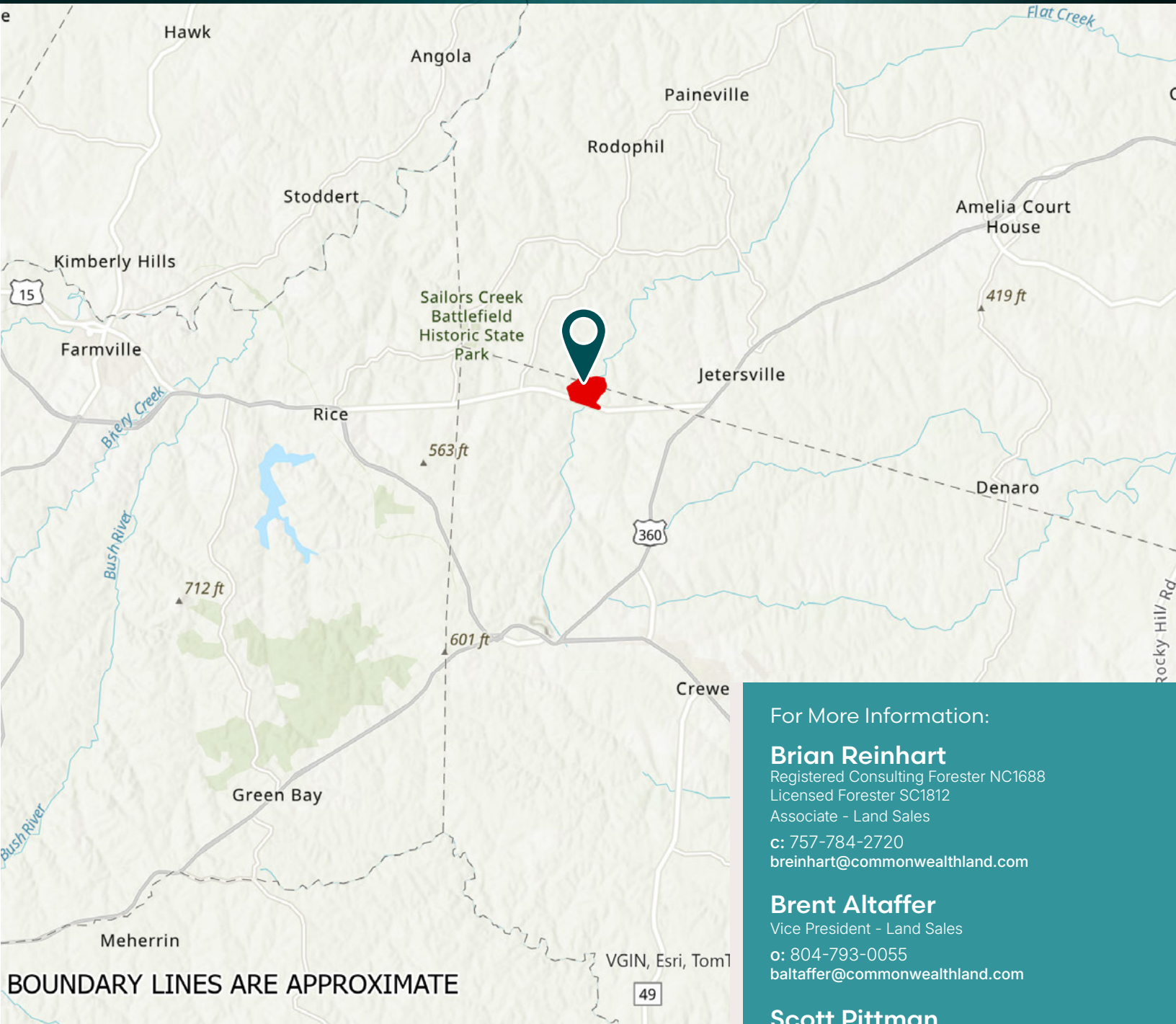
o: 804-346-9014

[mchapman@commonwealthland.com](mailto:mchapman@commonwealthland.com)

# For Sale | 268.6 Acres

## Holly Farms Road, Burkeville, VA 23922

PRICE: \$875,000 (\$3,236/AC) ▪ NOTTOWAY COUNTY



BOUNDARY LINES ARE APPROXIMATE


### For More Information:

**Brian Reinhart**  
Registered Consulting Forester NC1688  
Licensed Forester SC1812  
Associate - Land Sales  
c: 757-784-2720  
breinhart@commonwealthland.com

**Brent Altaffer**  
Vice President - Land Sales  
o: 804-793-0055  
baltaffer@commonwealthland.com

**Scott Pittman**  
Associate - Land Sales  
o: 804-228-4925  
spittman@commonwealthland.com

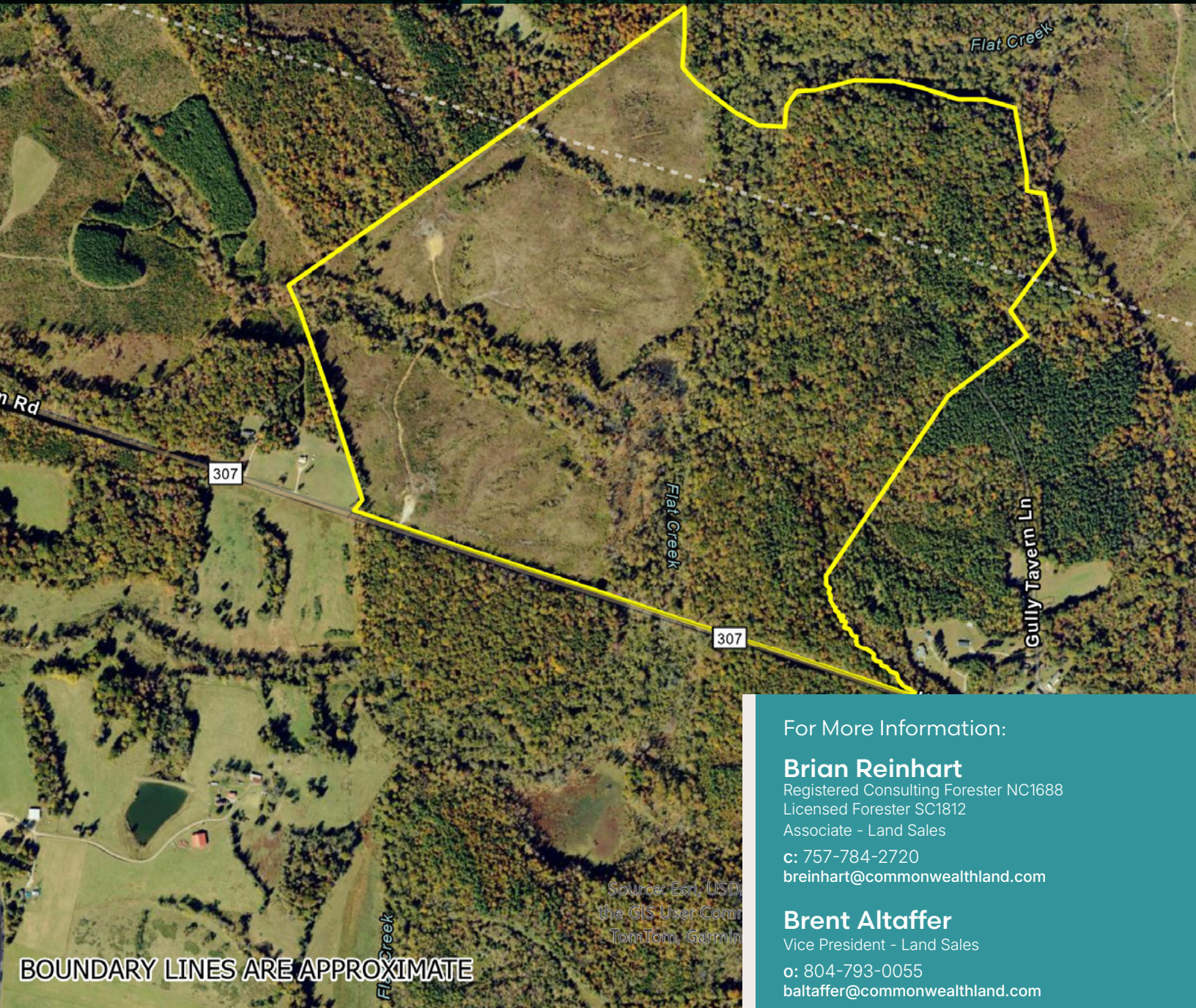
**Michael Chapman**  
Associate - Land Sales  
o: 804-346-9014  
mchapman@commonwealthland.com

 4198 Cox Road, Suite 200  
Glen Allen, VA 23060  
o: 804-346-4966  
commonwealthcommercial.com

# For Sale | 268.6 Acres

Holly Farms Road, Burkeville, VA 23922

PRICE: \$875,000 (\$3,236/AC) ▪ NOTTOWAY COUNTY



For More Information:

## Brian Reinhart

Registered Consulting Forester NC1688

Licensed Forester SC1812

Associate - Land Sales

c: 757-784-2720

breinhart@commonwealthland.com

## Brent Altaffer

Vice President - Land Sales

o: 804-793-0055

baltaffer@commonwealthland.com

## Scott Pittman

Associate - Land Sales

o: 804-228-4925

spittman@commonwealthland.com

## Michael Chapman

Associate - Land Sales

o: 804-346-9014

mchapman@commonwealthland.com



4198 Cox Road, Suite 200

Glen Allen, VA 23060

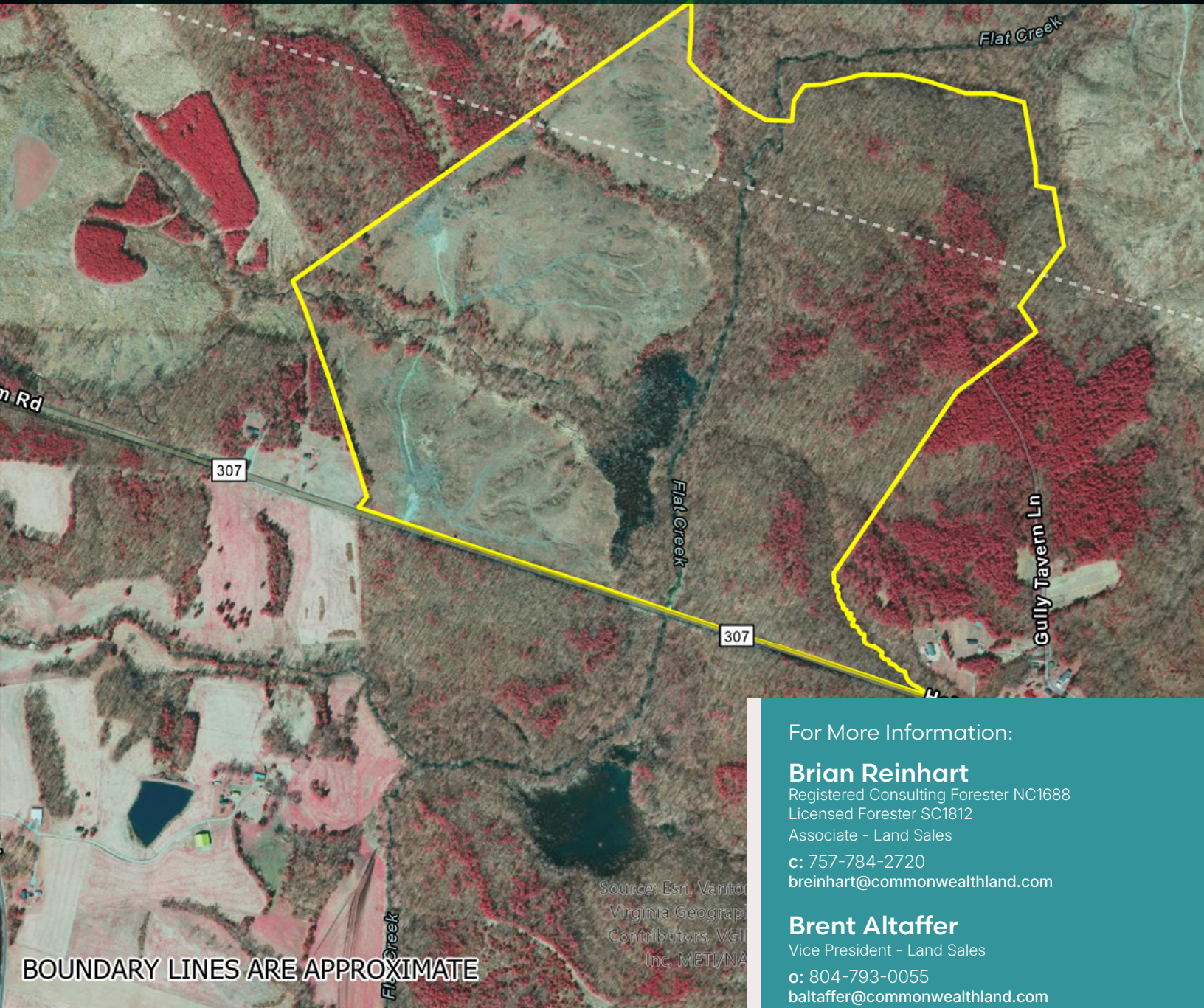
o: 804-346-4966

commonwealthcommercial.com

# For Sale | 268.6 Acres

Holly Farms Road, Burkeville, VA 23922

PRICE: \$875,000 (\$3,236/AC) ▪ NOTTOWAY COUNTY



For More Information:

## Brian Reinhart

Registered Consulting Forester NC1688

Licensed Forester SC1812

Associate - Land Sales

c: 757-784-2720

[breinhart@commonwealthland.com](mailto:breinhart@commonwealthland.com)

## Brent Altaffer

Vice President - Land Sales

o: 804-793-0055

[baltaffer@commonwealthland.com](mailto:baltaffer@commonwealthland.com)

## Scott Pittman

Associate - Land Sales

o: 804-228-4925

[spittman@commonwealthland.com](mailto:spittman@commonwealthland.com)

## Michael Chapman

Associate - Land Sales

o: 804-346-9014

[mchapman@commonwealthland.com](mailto:mchapman@commonwealthland.com)



4198 Cox Road, Suite 200

Glen Allen, VA 23060

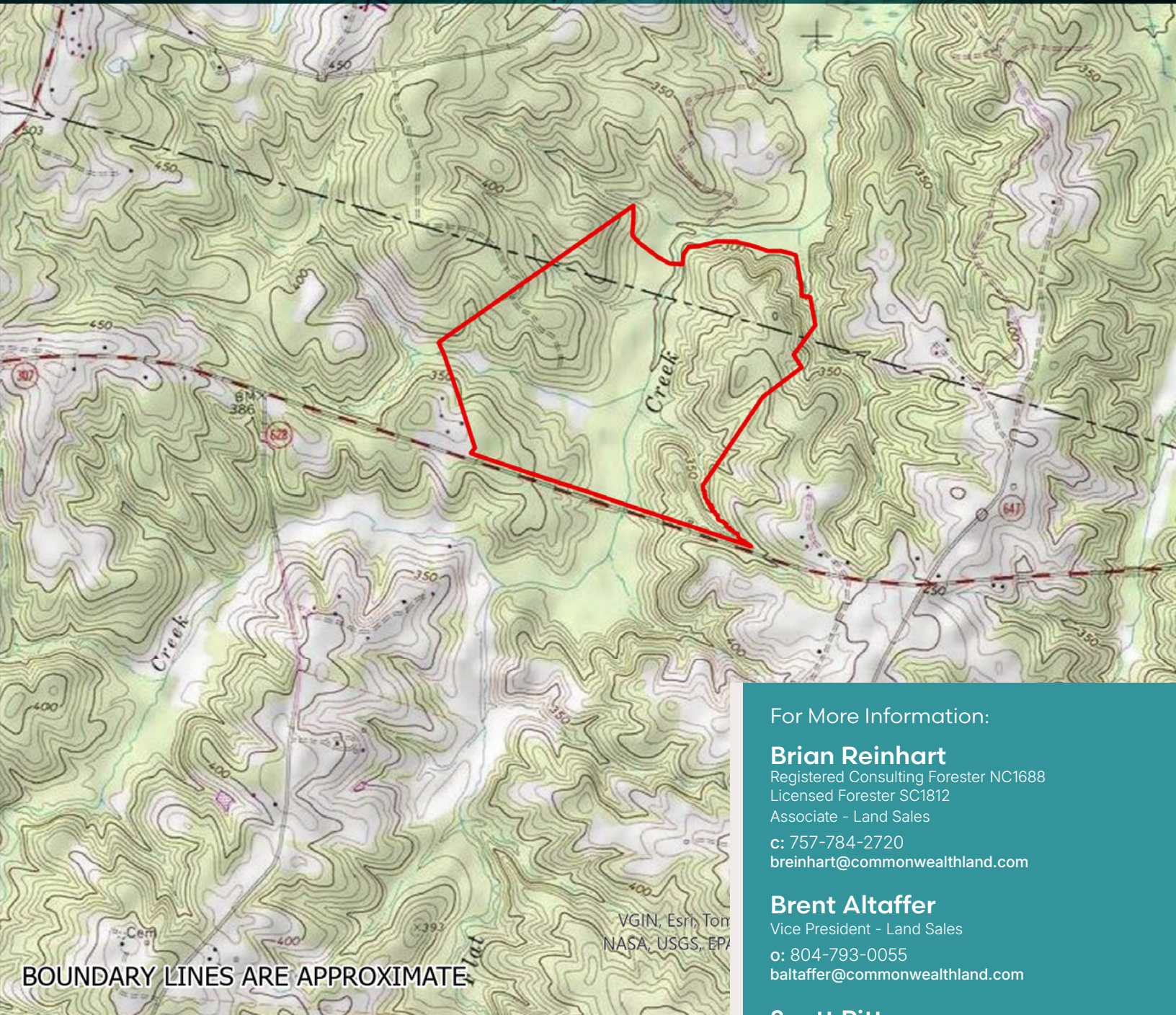
o: 804-346-4966

[commonwealthcommercial.com](http://commonwealthcommercial.com)

# For Sale | 268.6 Acres

Holly Farms Road, Burkeville, VA 23922

PRICE: \$875,000 (\$3,236/AC) ▪ NOTTOWAY COUNTY



For More Information:

## Brian Reinhart

Registered Consulting Forester NC1688

Licensed Forester SC1812

Associate - Land Sales

c: 757-784-2720

breinhart@commonwealthland.com

## Brent Altaffer

Vice President - Land Sales

o: 804-793-0055

baltaffer@commonwealthland.com

## Scott Pittman

Associate - Land Sales

o: 804-228-4925

spittman@commonwealthland.com

## Michael Chapman

Associate - Land Sales

o: 804-346-9014

mchapman@commonwealthland.com



4198 Cox Road, Suite 200

Glen Allen, VA 23060

o: 804-346-4966

commonwealthcommercial.com

# For Sale | 268.6 Acres

Holly Farms Road, Burkeville, VA 23922

PRICE: \$875,000 (\$3,236/AC) ▪ NOTTOWAY COUNTY



For More Information:

## Brian Reinhart

Registered Consulting Forester NC1688

Licensed Forester SC1812

Associate - Land Sales

c: 757-784-2720

[breinhart@commonwealthland.com](mailto:breinhart@commonwealthland.com)

## Brent Altaffer

Vice President - Land Sales

o: 804-793-0055

[baltaffer@commonwealthland.com](mailto:baltaffer@commonwealthland.com)

## Scott Pittman

Associate - Land Sales

o: 804-228-4925

[spittman@commonwealthland.com](mailto:spittman@commonwealthland.com)

## Michael Chapman

Associate - Land Sales

o: 804-346-9014

[mchapman@commonwealthland.com](mailto:mchapman@commonwealthland.com)



4198 Cox Road, Suite 200

Glen Allen, VA 23060

o: 804-346-4966

[commonwealthcommercial.com](http://commonwealthcommercial.com)