

**FOR SALE**

**County Drive  
Disputanta, VA 23842  
Prince George County**



**COMMONWEALTH**  
COMMERCIAL REAL ESTATE SOLUTIONS



## Property Features

- 17.88 acres for sale- 2 parcels – Tax ID: 460(OA)-0013-C and 460(OA)00-55-0
- Frontage on County Drive (US Route 460)
- R-A Zoning - allows for single family dwellings and agricultural uses
- Sewer available to site
- Sale Price: \$495,000

For More Information:

**Colton Konvicka, SIOR**

Senior Vice President

o: 804-324-7209

ckonvicka@commonwealthcommercial.com

**Ryan Fanelli**

Senior Vice President, Partner

o: 804-400-6163

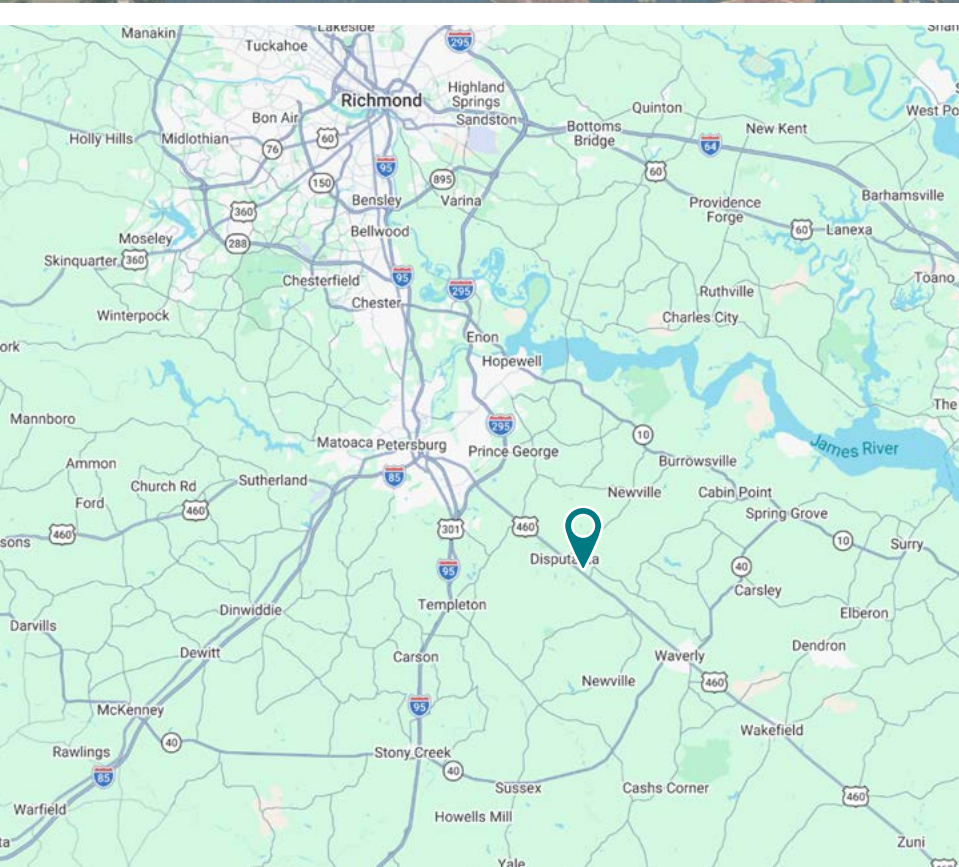
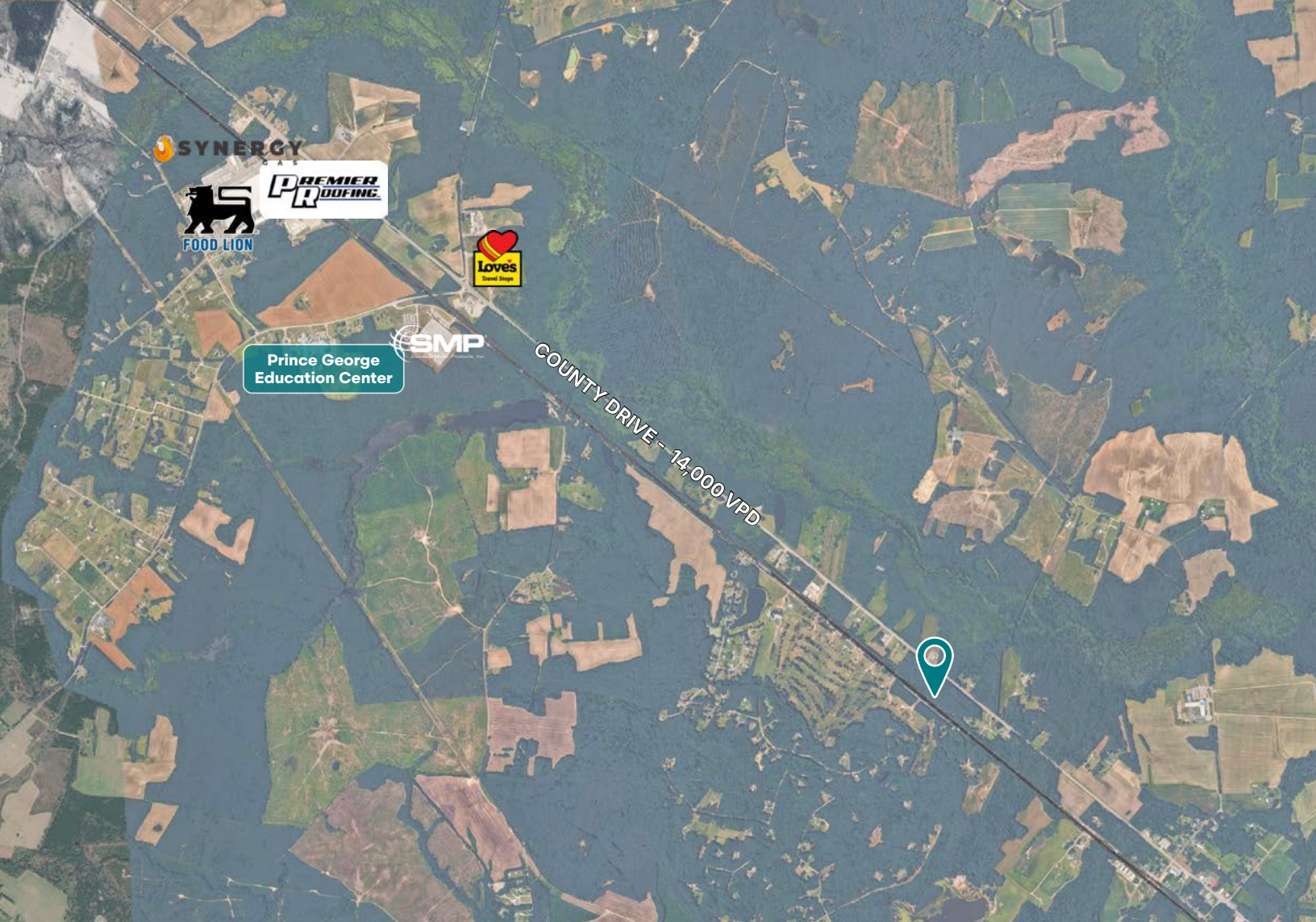
rfanelli@commonwealthcommercial.com

This document has been prepared for informational purposes only. All information contained herein has been obtained from sources believed to be reliable; however, no representation or warranty, express or implied, is made as to the accuracy or completeness of the information contained herein.

4198 Cox Road, Suite 200  
Glen Allen, VA 23060

o: 804-346-4966

commonwealthcommercial.com



## DISPUTANTA SNAPSHOT

Strategically positioned along U.S. Route 460 between Petersburg and the Port of Virginia logistics corridor, the area benefits from industrial, distribution, and transportation-related activity

### Industrial & Logistics

- Supported by major employers and industrial facilities, including the Food Lion distribution center, Standard Motor Products operations, and truck-service businesses along Route 460.
- Proximity to I-95, I-295, Petersburg, and the Hampton Roads port network makes the corridor attractive for warehouse, manufacturing, and transportation users.

### Regional Growth Influences

- Ongoing industrial expansion throughout the Richmond–Petersburg region continues to create demand for industrial land and workforce housing.

# Survey

