

FOR LEASE

CREATIVE OFFICE SPACE

CORRUGATED BOX

CORRUGATED BOX

201

FDC

W 7TH ST
200

PORTER ST

CORRUGATED BOX

201 W 7th Street | Richmond, VA 23224



**COMMONWEALTH
COMMERCIAL**

Comprehensive Property Solutions

PROPERTY HIGHLIGHTS

- › 3,100± SF available on 1st floor
Up to 13,181± SF available on 2nd floor
- › Amenities include shared conference room and coffee bar with wifi
- › Collaborative and creative working environment
- › Convenient access to Downtown and I-95
- › Easy access to the Central Business District via the Mayo Bridge
- › Surrounded by upscale apartments and several under construction mixed use developments
- › Property offers exposed brick, high ceilings, wood flooring and skylights
- › Onsite and offsite parking available
- › Lease rate: \$21.00/NNN

DEMOGRAPHICS	1 MILE	3 MILE	5 MILE
POPULATION	12,628	128,749	260,683
AVERAGE HH INCOME	\$62,907	\$59,616	\$68,594
DAYTIME EMPLOYEE	25,745	167,547	231,567

For more information:

TUCKER DOWDY, SIOR

Senior Vice President | Partner

804-228-4932

tdowdy

@commonwealthcommercial.com

ERIC HAMMOND

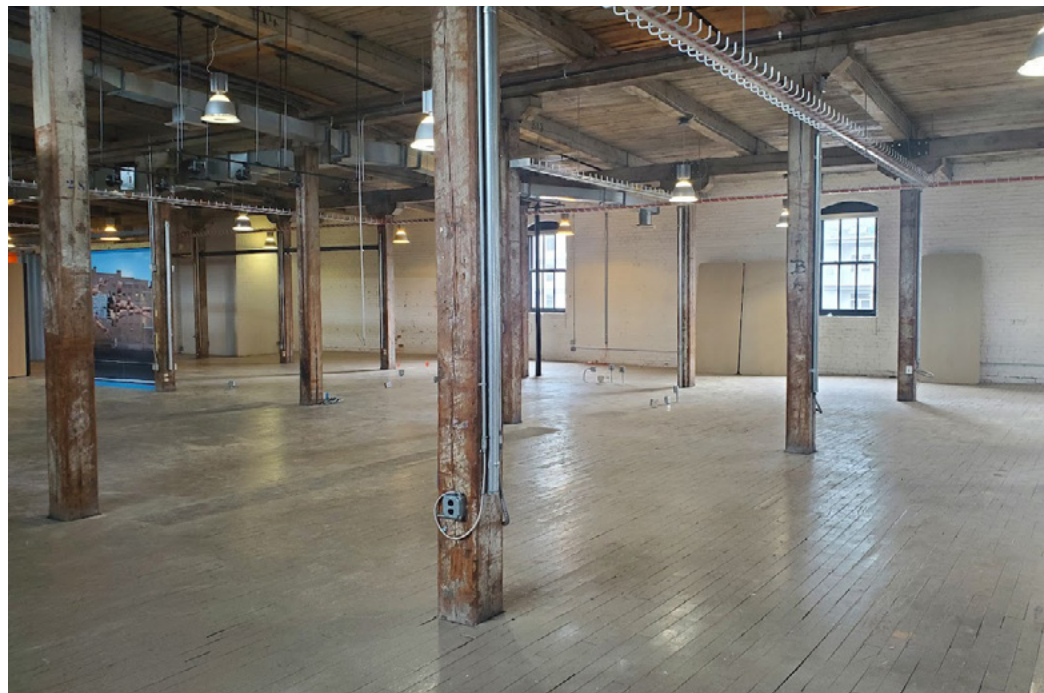
Vice President

804-241-5304

ehammond

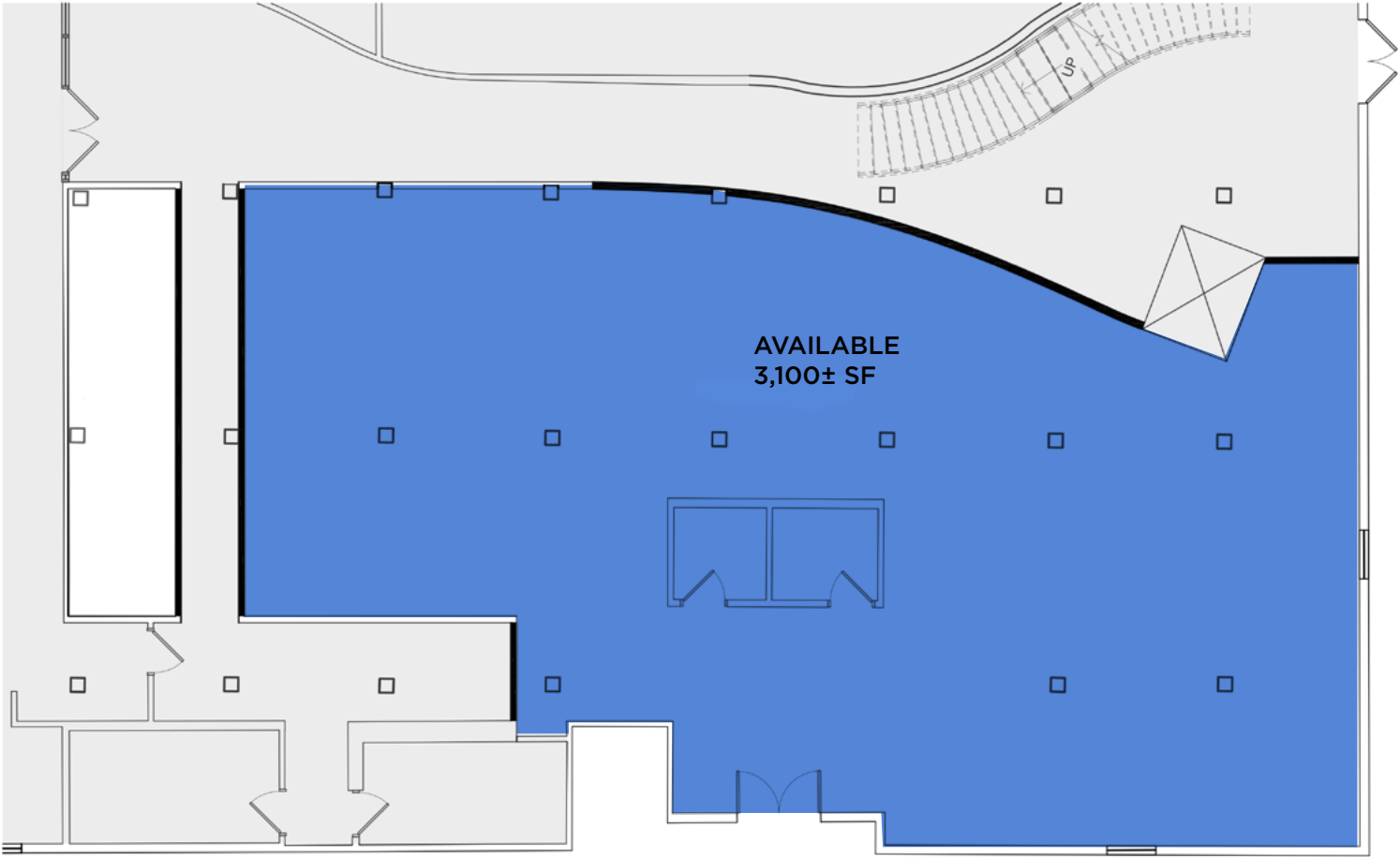
@commonwealthcommercial.com

Commonwealth Commercial Partners, LLC represents the Owner of this property.
Information contained herein, is deemed reliable but not guaranteed.



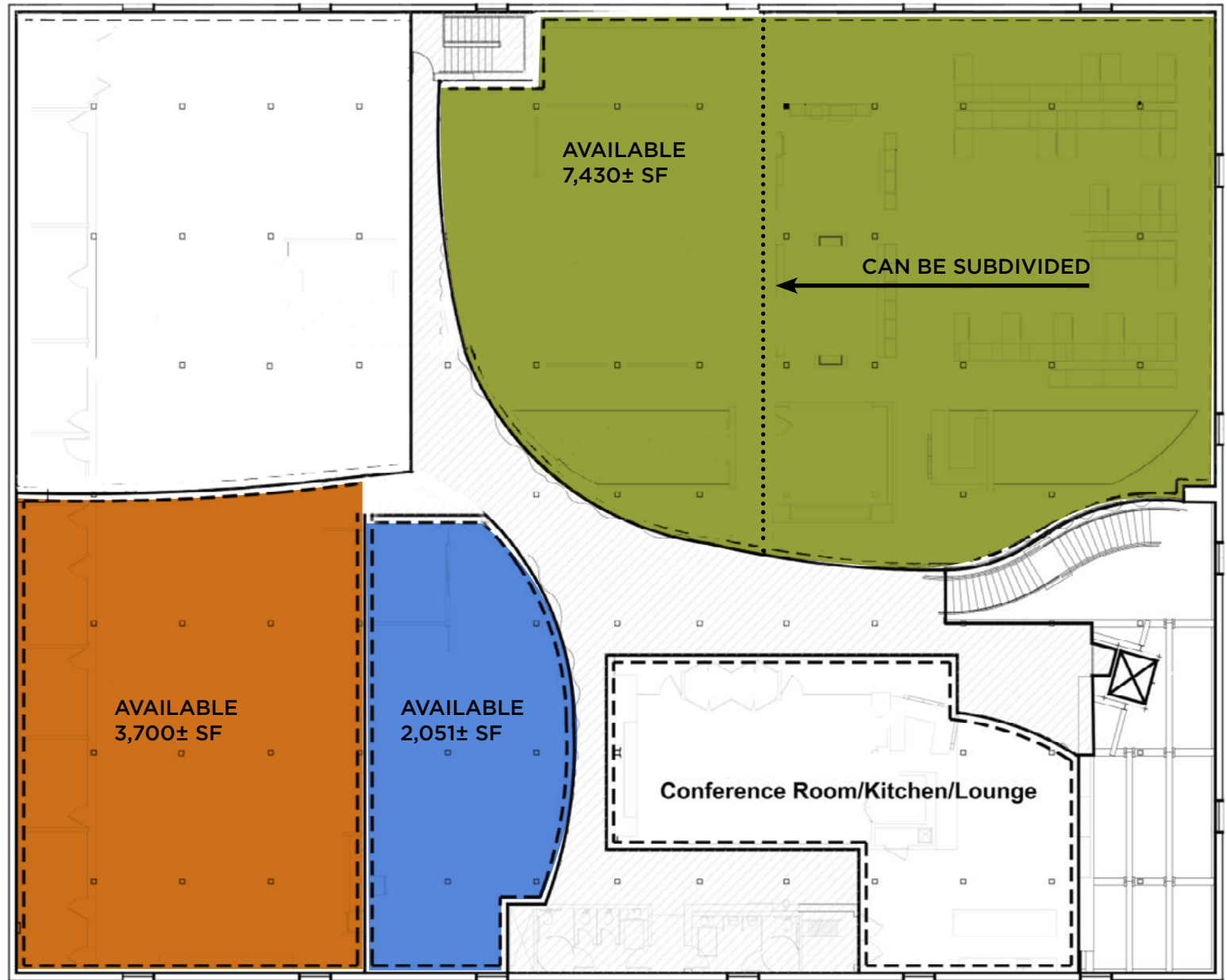
FLOOR PLAN

LOWER LEVEL



FLOOR PLAN

UPPER LEVEL



LOCATION IS EVERYTHING



BREWER'S CAFE

sweetfix

HOT DIGGITY DONUTS

CROAKER'S SPOT

RVA STREET FOODS

IRONCLAD PIZZA GRILL • MANCHESTER, VA

MANCHESTER ON MARKET

McDonald's

DOG TOWN BREW CO.

BASIC CITY BEER CO.

SUBWAY

Camden's Dogtown Market