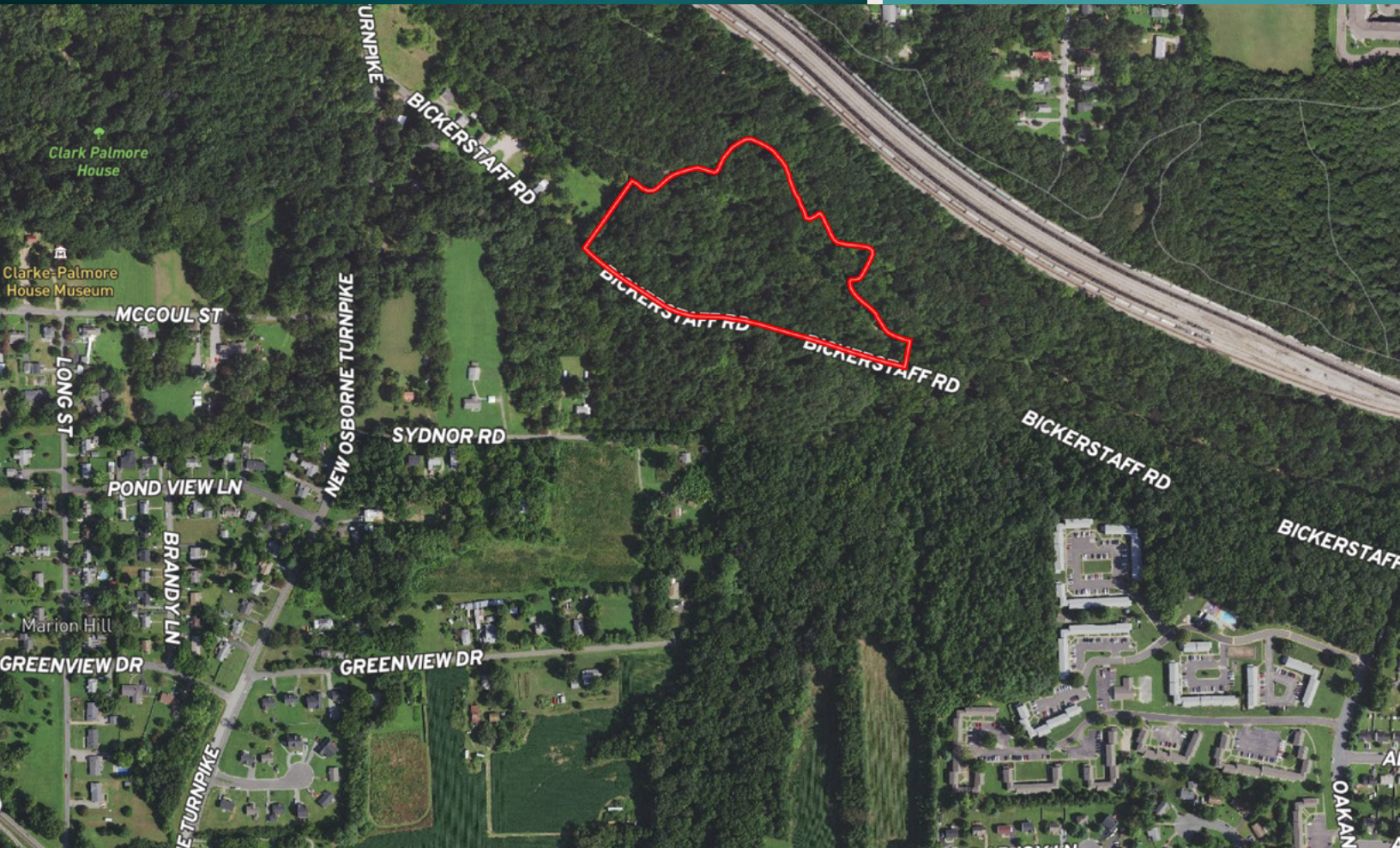


FOR SALE

**1200 Bickerstaff Road
Richmond, VA 23231**



COMMONWEALTH
COMMERCIAL REAL ESTATE SOLUTIONS



Property Highlights

- 8.25± acres located near Rocketts Landing
- Zoned M-2
- 1,160±' of road frontage on Bickerstaff Road
- Approximately 1.5 miles south of Rocketts Landing and 6 miles west of Richmond International Airport
- Located in the Opportunity Zone
- Sale Price: \$200,000

Demographics	1 mile	3 mile	5 mile
2026 Population	68,100	194,013	530,197
Average HH Income	\$82,784	\$82,157	\$96,589

This document has been prepared for informational purposes only. All information contained herein has been obtained from sources believed to be reliable; however, no representation or warranty, express or implied, is made as to the accuracy or completeness of the information contained herein.

For More Information:

Joe Buhrman

Senior Vice President | Partner

o: 804-433-1811

jbuhrman@commonwealthcommercial.com

Brent Altaffer

Vice President

o: 804-793-0055 c: 804-436-5795

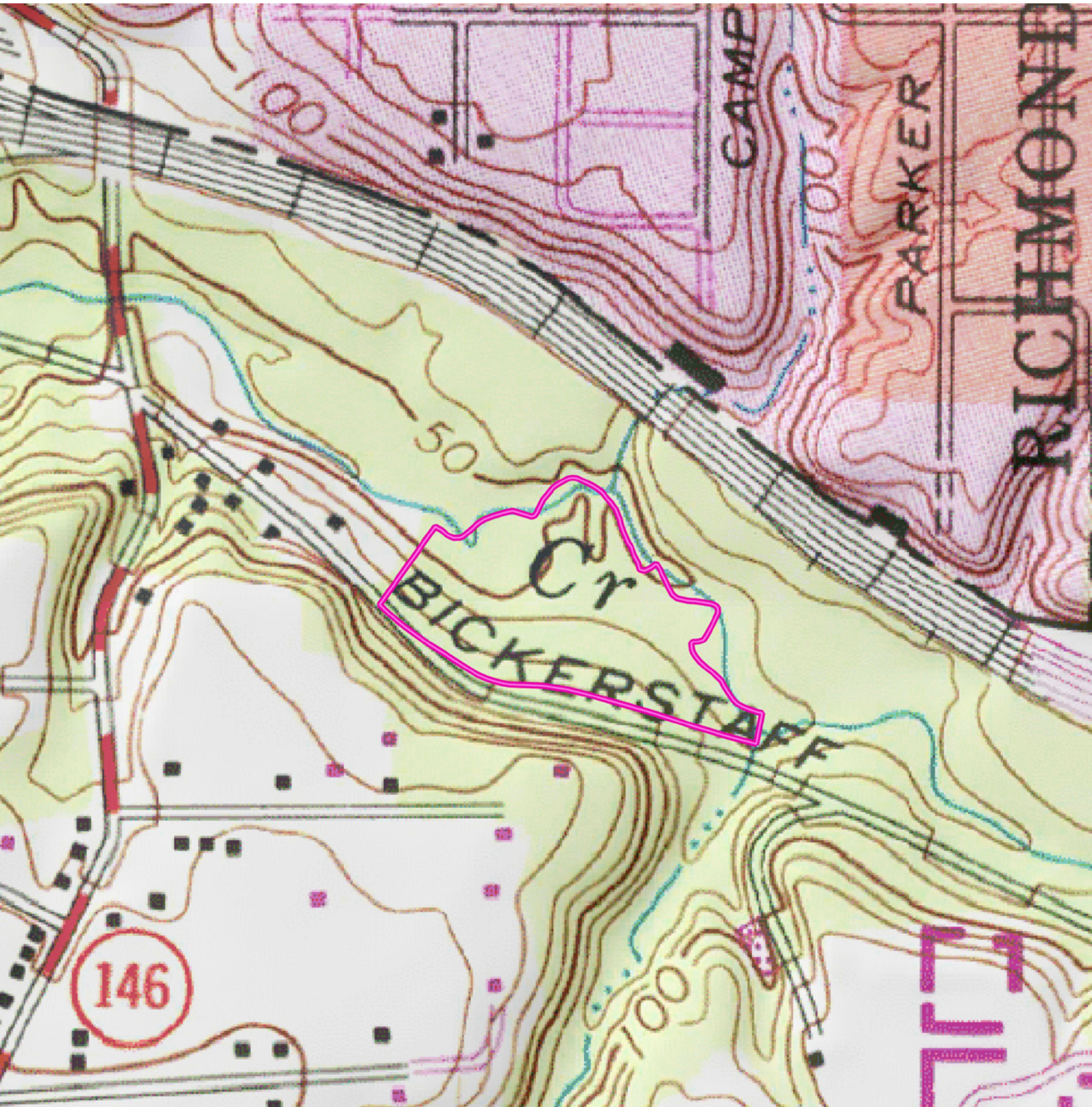
baltaffer@commonwealthcommercial.com

4198 Cox Road, Suite 200
Glen Allen, VA 23060

o: 804-346-4966

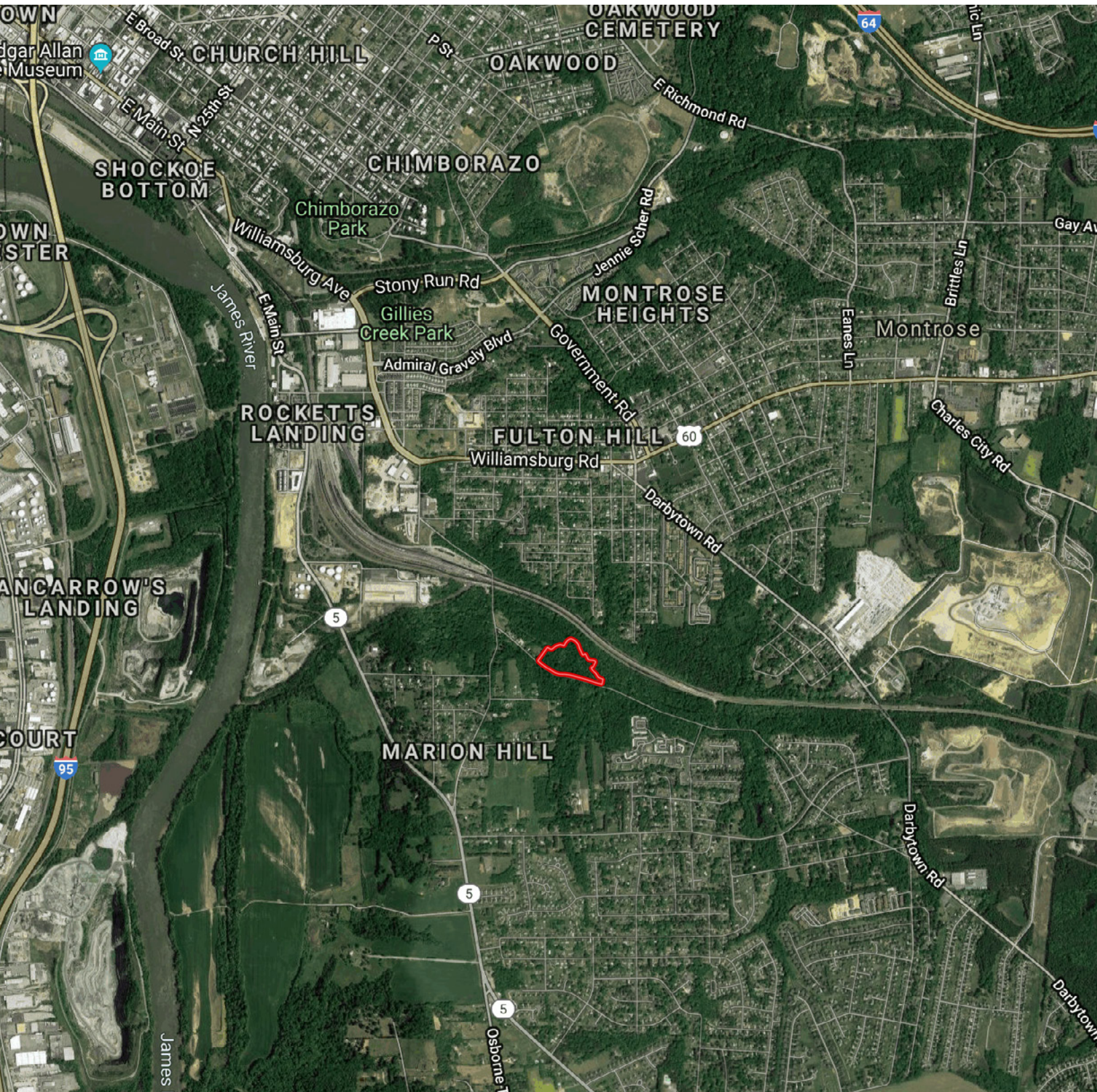
commonwealthcommercial.com

Topo 10' Intervals Map



4198 Cox Road, Suite 200
Glen Allen, VA 23060
o: 804-346-4966
commonwealthcommercial.com

Location Map



4198 Cox Road, Suite 200
Glen Allen, VA 23060
o: 804-346-4966
commonwealthcommercial.com