

**FOR
LEASE**

GREAT LOCATION!

Arboretum Lakeside

9201 Arboretum Parkway | Richmond, VA 23236



**COMMONWEALTH
COMMERCIAL**
Comprehensive Property Solutions



PROPERTY HIGHLIGHTS

- › Class A office building located in the heart of The Arboretum Office Park
- › Suites ranging from 1,550 up to 3,999± SF
- › Conveniently located with direct access from Powhite Parkway and Midlothian Turnpike
- › 2 story atrium with wood and marble finishes throughout building
- › 9' full-height windows provides abundant natural light
- › Great proximity to retailers
- › Private patio alongside Arboretum lake
- › Professionally managed by Commonwealth Commercial Partners, LLC

FOR MORE INFORMATION:

ELIZA IZARD

Vice President

804-968-1155

eizard@commonwealthcommercial.com

JAMIE GALANTI

Senior Vice President | Partner

804-228-4932

jgalanti@commonwealthcommercial.com

RUSSELL WYATT

Senior Vice President | Partner

804-433-1817

rwyatt@commonwealthcommercial.com

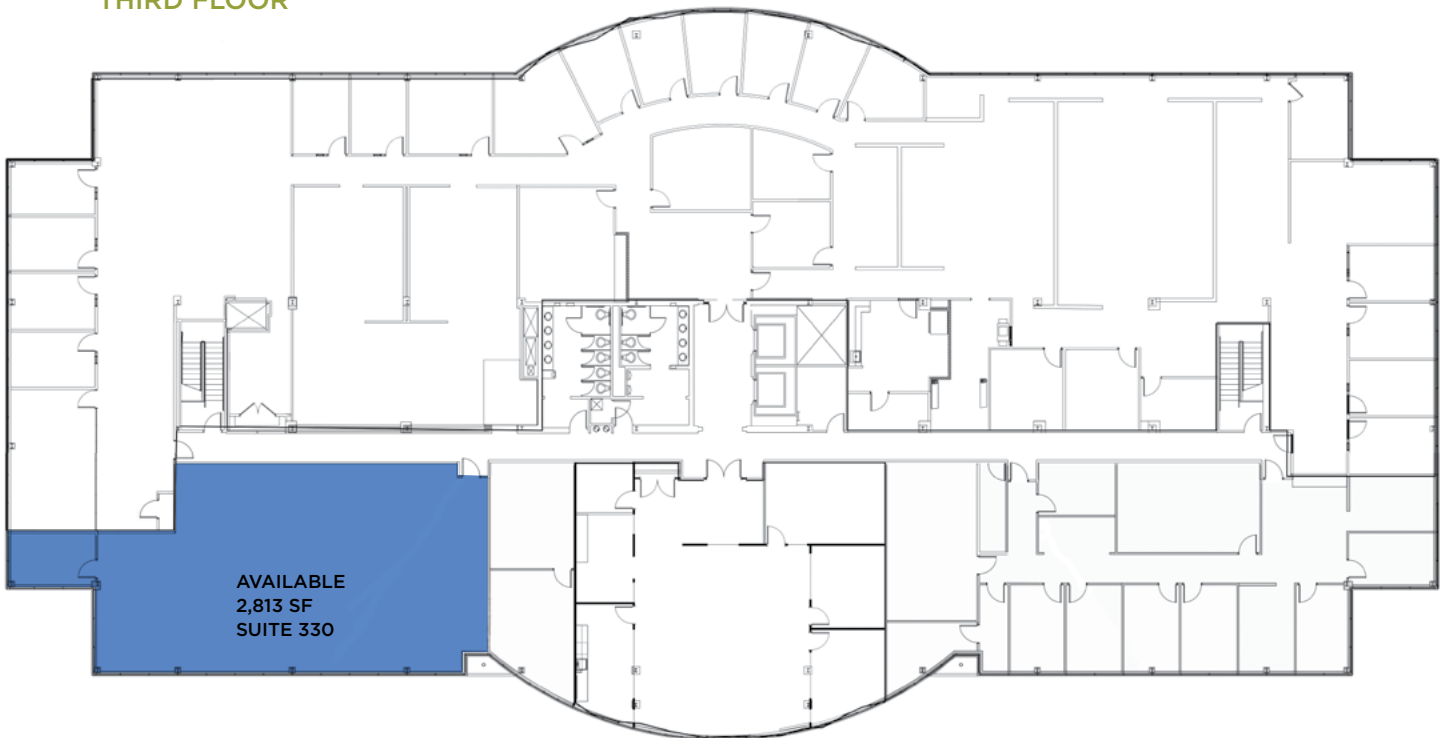
Commonwealth Commercial Partners, LLC represents the Landlord of this property. Information contained herein is deemed reliable but is not guaranteed.

FLOOR PLANS

FIRST FLOOR



THIRD FLOOR





FOR LEASE | 9201 ARBORETUM PARKWAY | RICHMOND, VA 23236

LOCATION MAP



FOR LEASE | 9201 ARBORETUM PARKWAY | RICHMOND, VA 23236