



BROKER BONUS
6% CO-BROKER COMMISSION
For New Tenants Leasing
3K+ SF & 5-YR
Minimum Term

FOR LEASE

9201 Arboretum Parkway
Richmond, VA 23236



Arboretum Lakeside

PROPERTY HIGHLIGHTS

- › **Available Suites:**
 - Suite 120: 1,550± SF
 - Suite 140: 2,122± SF
 - Suite 145: 2,449± SF
 - Suite 310: Suites ranging from 2,477 - 16,407± SF
 - Suite 330: 2,813± SF
- › **Location:** Direct access from Powhite Parkway (Rt.76) and Midlothian Turnpike (Rt. 60)
- › **Stylish Design:** Two-story atrium with rich wood and marble finishes throughout
- › **Nearby Amenities:** Close to shopping, dining, and various nearby amenities
- › **Bright Interiors:** 9' full-height windows provide ample natural light throughout
- › **Scenic Setting:** Building has a private patio overlooking one of the park's lakes
- › **Parking:** Abundant parking for both tenants and visitors
- › **Property Management:** Professionally managed by Commonwealth Commercial Partners, LLC

FOR MORE INFORMATION:

ELIZA IZARD

Vice President
804-968-1155
eizard@commonwealthcommercial.com

JAMIE GALANTI, CCIM, SIOR

Senior Vice President | Partner
804-433-1825
jgalanti@commonwealthcommercial.com

RUSSELL WYATT

Senior Vice President | Partner
804-221-4272
rwyatt@commonwealthcommercial.com



FLOOR PLANS

First Floor



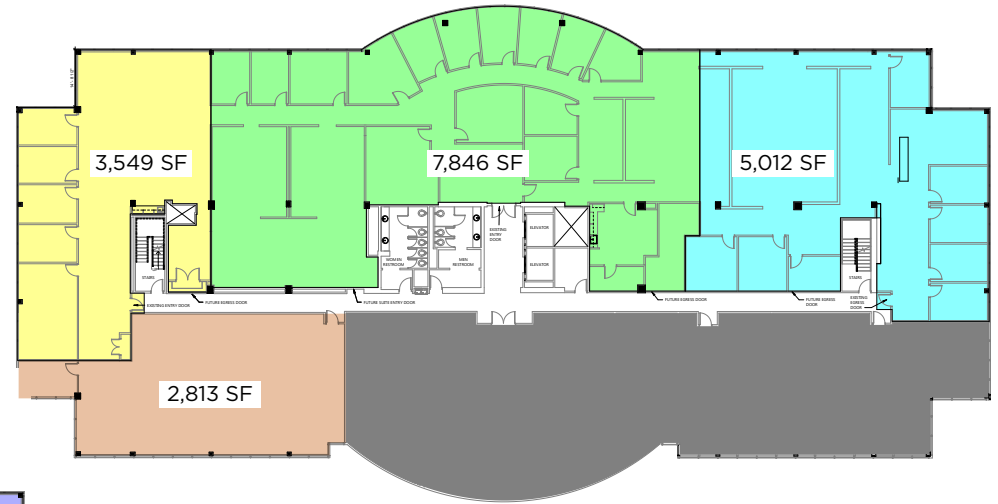
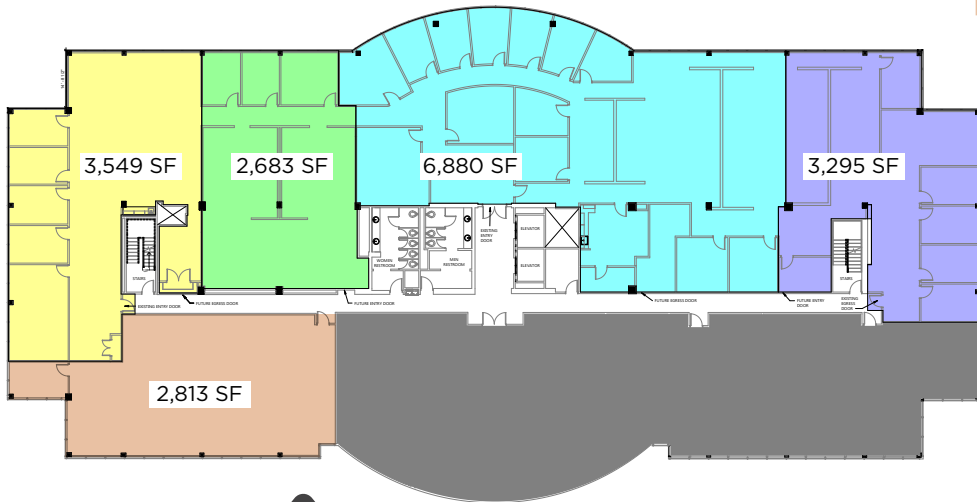
Third Floor



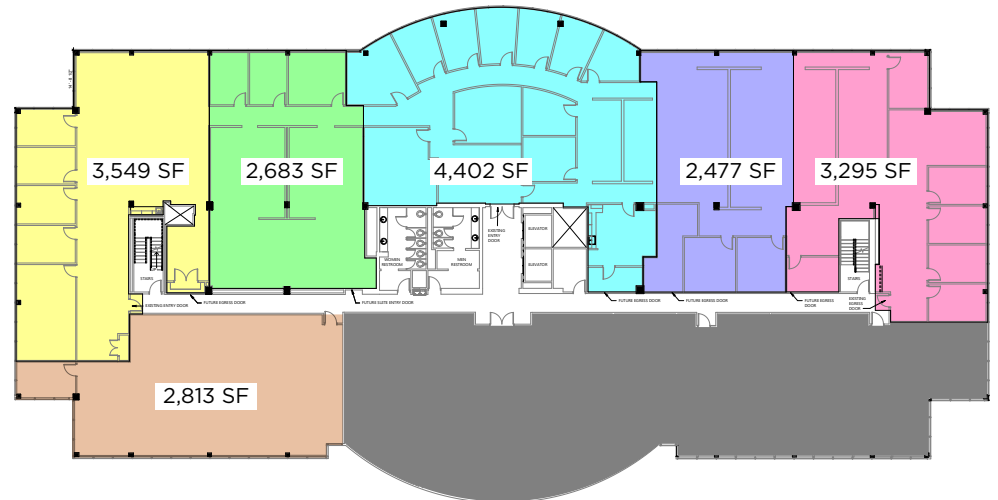
SAMPLE DEMISING PLANS

Third Floor

Suites ranging from
2,477 - 16,407± SF



BROKER BONUS
6% CO-BROKER COMMISSION
For New Tenants Leasing
3K+ SF & 5-YR
Minimum Term





ARCH VILLAGE S/C

Little Caesar's pizzapizza
AMERICAN FREIGHT
EXON

SHOPS AT THE ARBORETUM

Starbucks
GOLD'S GYM
Sonic Drive-Ins
GOGI
FedEx Office

SHEETZ



Midlothian Turnpike 60,400± VPD

Powhite Parkway

NORTH ARCH VILLAGE APARTMENTS



THE ARBORETUM



PARSON LAW

Arboretum Parkway



Arboretum Pkwy

Geosyntec consultants

Arboretum Pkwy

Arboretum Pkwy

Brundidge Rd

Brundidge Rd

Groomfield Rd

Groomfield Rd

Groomfield Rd



BROKER BONUS
6% CO-BROKER COMMISSION
For New Tenants Leasing
3K+ SF & 5-YR
Minimum Term



**COMMONWEALTH
COMMERCIAL**
Comprehensive Property Solutions

For more information:

ELIZA IZARD

Vice President

804-968-1155

eizard@commonwealthcommercial.com

JAMIE GALANTI, CCIM, SIOR

Senior Vice President | Partner

804-433-1825

jgalanti@commonwealthcommercial.com

RUSSELL WYATT

Senior Vice President | Partner

804-221-4272

rwyant@commonwealthcommercial.com

MAIN OFFICE ADDRESS: 4198 Cox Road, Suite 200 | Glen Allen, VA 23060 **MAILING ADDRESS:** P.O. Box 71150 | Richmond, VA 23255

T 804-346-4966 **F** 804-346-5901 **COMMONWEALTHCOMMERCIAL.COM**

Commonwealth Commercial Partners, LLC represents the Landlord of this property. Information contained herein, is deemed reliable but not guaranteed.