

**FOR  
LEASE**

EXCELLENT LOCATION

# Grove Road Office

825 Grove Road | Midlothian, VA 23114



**COMMONWEALTH  
COMMERCIAL**  
Comprehensive Property Solutions



## PROPERTY HIGHLIGHTS

- › One unit available  
Unit 10: 968± SF
- › Convenient Midlothian Location
- › Signalized Intersection on Midlothian Turnpike
- › Signage Opportunities

DEMOGRAPHICS	1 MILE	3 MILE	5 MILE
TOTAL POPULATION	2,816	61,606	131,418
AVERAGE HH INCOME	\$105,128	\$116,390	\$114,270
DAYTIME EMPLOYEES	7,824	29,682	62,659

## FOR MORE INFORMATION:

### LIZ GRAY

Senior Associate

804-433-1814

[lgray@commonwealthcommercial.com](mailto:lgray@commonwealthcommercial.com)

### RUSSELL WYATT

Senior Vice President | Partner

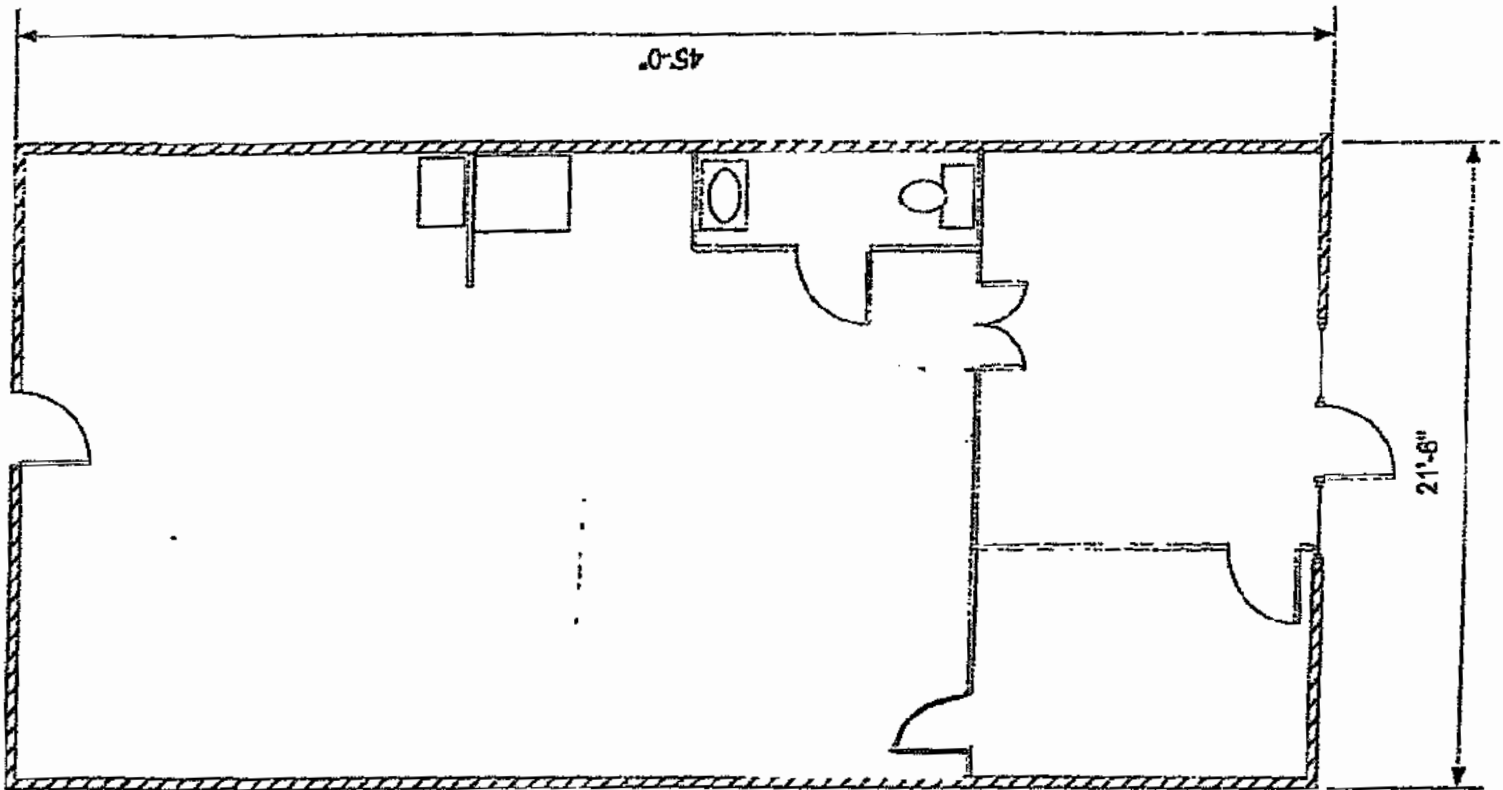
804-221-4272

[rwyatt@commonwealthcommercial.com](mailto:rwyatt@commonwealthcommercial.com)

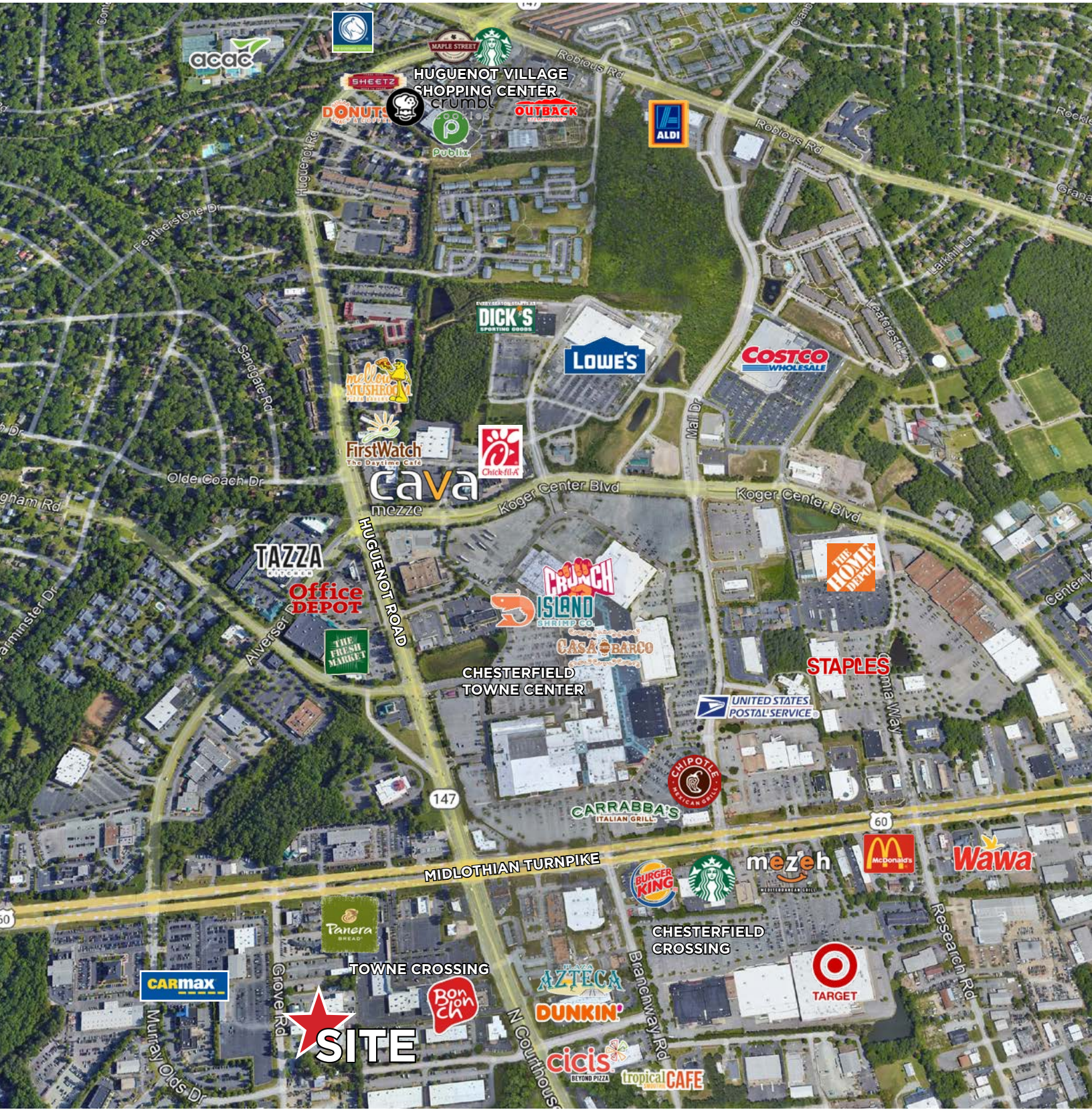
Commonwealth Commercial Partners, LLC represents the Landlord of this property. Information contained herein is deemed reliable but is not guaranteed.

# FLOOR PLANS

UNIT 10  
968± RSF



# LOCATION IS EVERYTHING



FOR LEASE | 825 GROVE ROAD | MIDLOTHIAN, VA 23114