

# FOR SALE

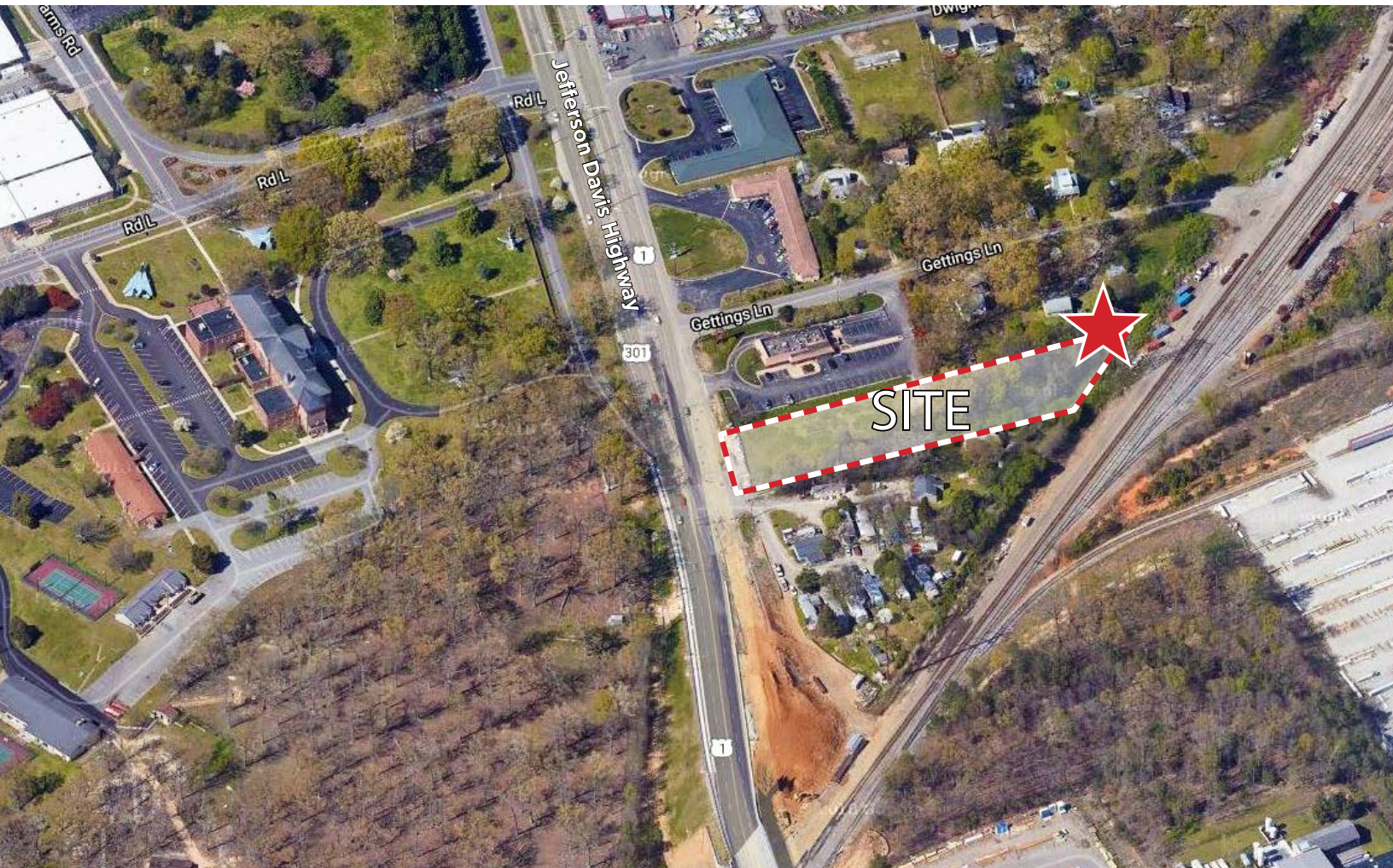
FLEXIBLE ZONING

## Urban Land

8211 Jefferson Davis Highway | Richmond, VA 23237



COMMONWEALTH  
COMMERCIAL  
Comprehensive Property Solutions



### PROPERTY HIGHLIGHTS

- › 1.156± acres
- › Flexible C-5 Zoning
- › Close proximity to Interstate-95 on busy Jefferson-Davis Highway
- › Traffic count: 21,200± VPD
- › Sale Price: \$525,000

DEMOGRAPHICS	1 MILE	3 MILE	5 MILE
TOTAL POPULATION	2,770	39,313	100,015
AVERAGE HH INCOME	\$60,832	\$88,876	\$88,499
DAYTIME EMPLOYEES	4,525	11,627	34,042

### FOR MORE INFORMATION:

#### JIM MCVEY

Senior Vice President | Partner  
804-433-1824  
jmcvey@commonwealthcommercial.com

#### TODD BUTTNER

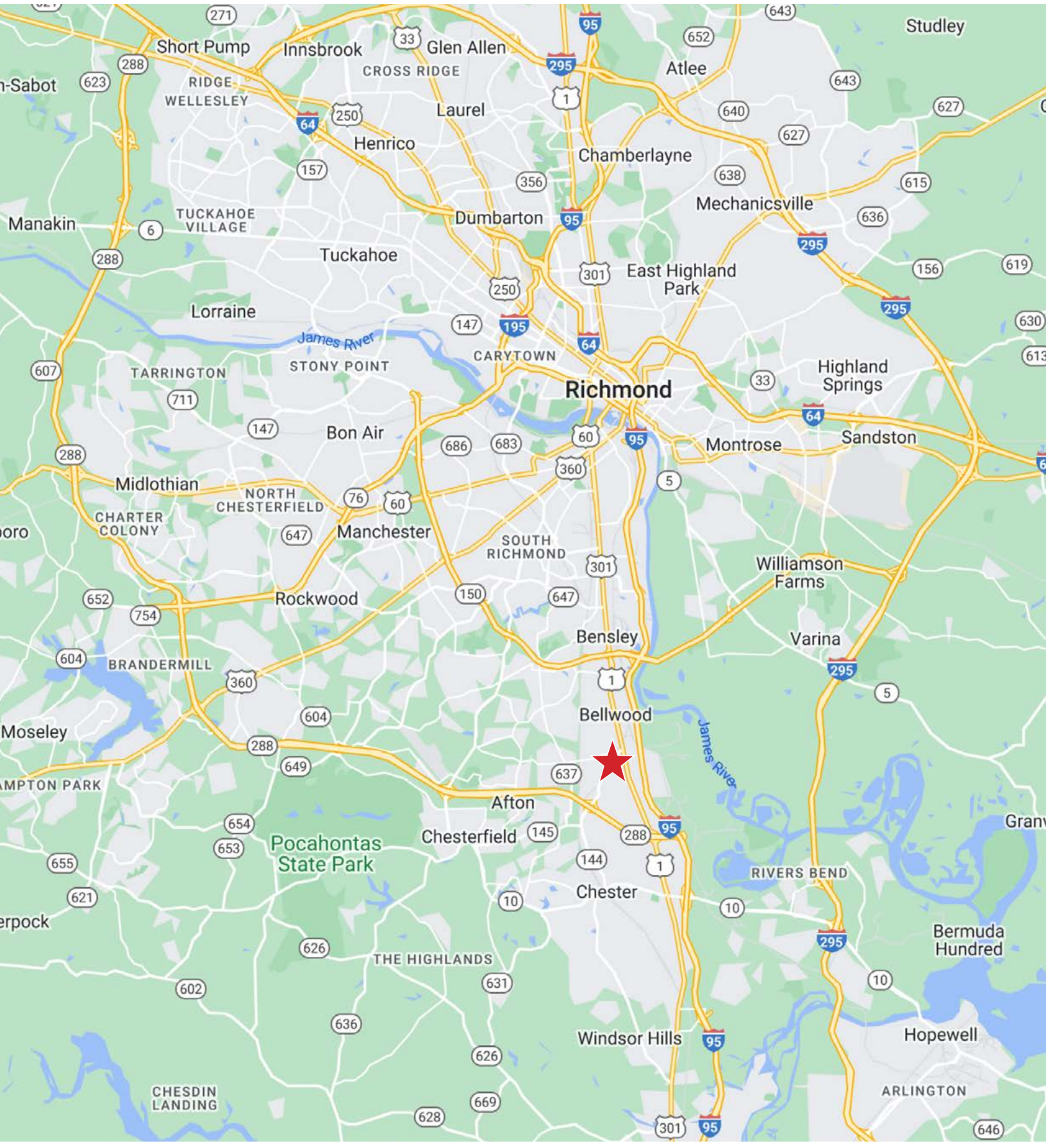
Senior Associate  
804-793-0059  
tbuttner@commonwealthcommercial.com

#### HARTLEY JORDAN

Sales & Leasing Associate  
804-964-2391  
hjordan@commonwealthcommercial.com

Commonwealth Commercial Partners, LLC represents the Owner of this property. Information contained herein is deemed reliable but is not guaranteed.

# PROXIMITY MAP



FOR SALE | 8211 JEFFERSON DAVIS HIGHWAY | RICHMOND, VA 23237