



## Features

- › 2,544± SF office/medical space available at the Memorial Regional Medical Center
- › Beautiful Class A medical facility
- › Located within prominent medical community of Memorial Regional Hospital
- › Excellent parking ratio: 5 spaces/1,000 SF
- › Immediate access to Interstate 295
- › Call Agent for pricing details

## Demographics

	3 Mile	5 Miles	10 Miles
<b>Total Population</b>	3,970	39,250	129,199
<b>Average HH Income</b>	\$93,725	\$83,718	\$78,565
<b>Daytime Employees</b>	3,994	18,429	44,253

For More Information Regarding This Property, Please Contact:

**TUCKER DOWDY**

804-228-4932  
tdowdy

@commonwealthcommercial.com

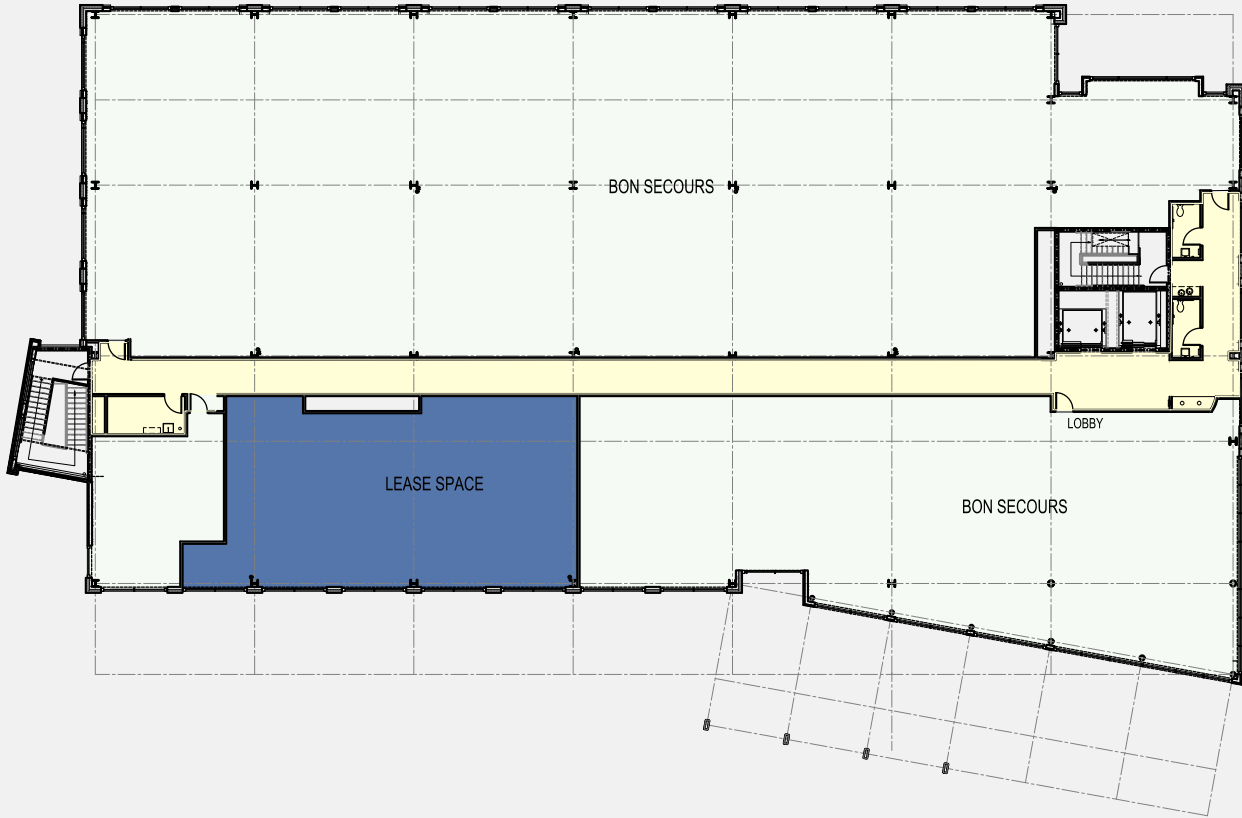
**JAMIE GALANTI**

804-433-1825  
jgalanti

@commonwealthcommercial.com



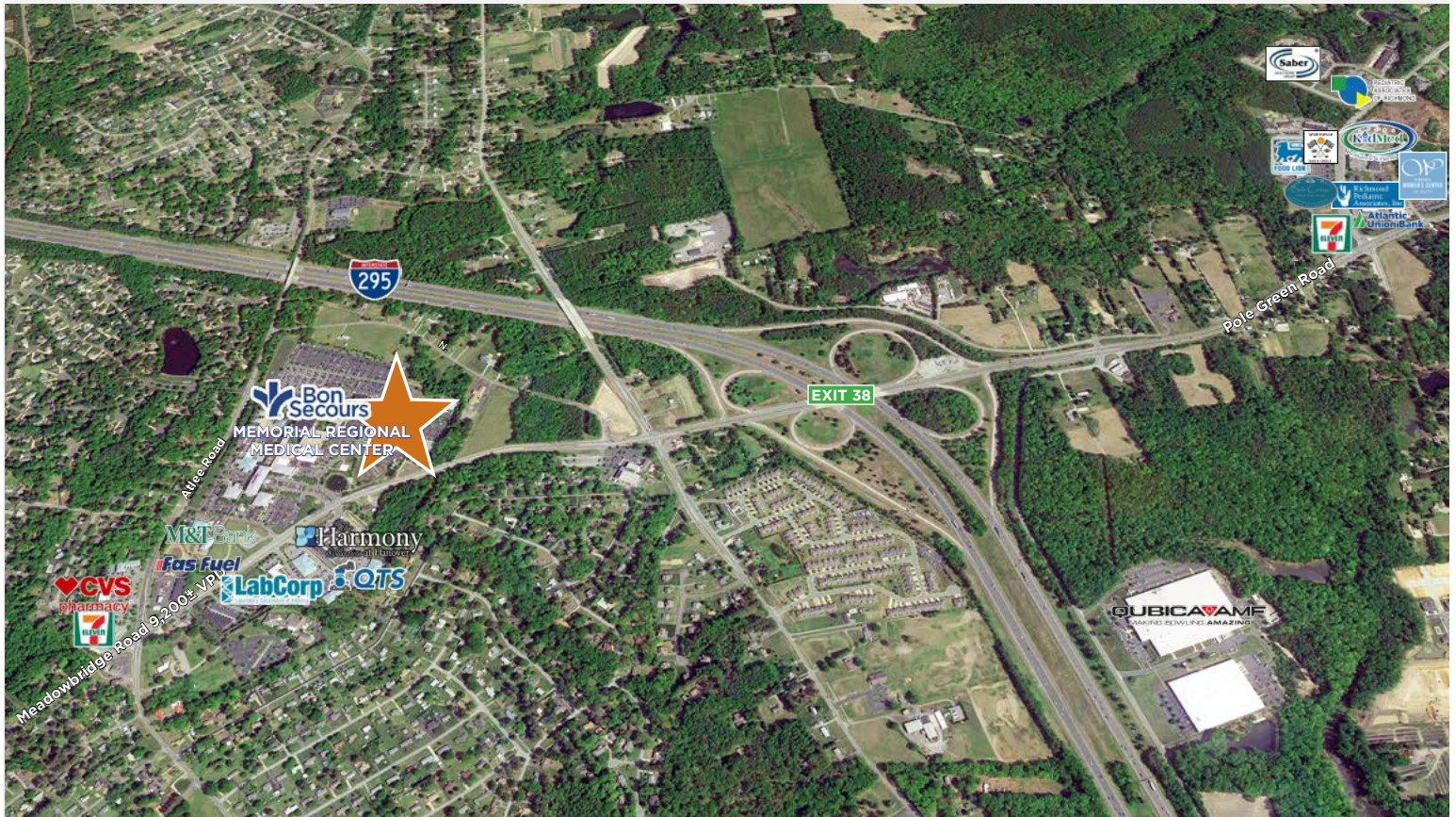
FOR LEASE 8200 Meadowbridge Road | Mechanicsville, VA 23116



T 804-346-4966 F 804-346-5901 [COMMONWEALTHCOMMERCIAL.COM](http://COMMONWEALTHCOMMERCIAL.COM)



FOR LEASE 8200 Meadowbridge Road | Mechanicsville, VA 23116



T 804-346-4966 F 804-346-5901 COMMONWEALTHCOMMERCIAL.COM