



Features

- › Availability
 - 1st Floor - 1,061± sf office (suite B)
2,197± sf office (suite A)
 - 2nd Floor - 11,738± sf office (subdividable)
- › Former “Ukrop’s” corporate headquarters
- › Abundant surface parking available
- › Monument sign on Southlake Boulevard
- › Located within historic Southport Business Park
- › Nearby amenities include: Roastology Coffee, Chesterfield Town Center, Arby’s and Midlothian Athletic Center



For More Information Regarding This Property, Please Contact:

TUCKER DOWDY

804-228-4932
tdowdy
@commonwealthcommercial.com

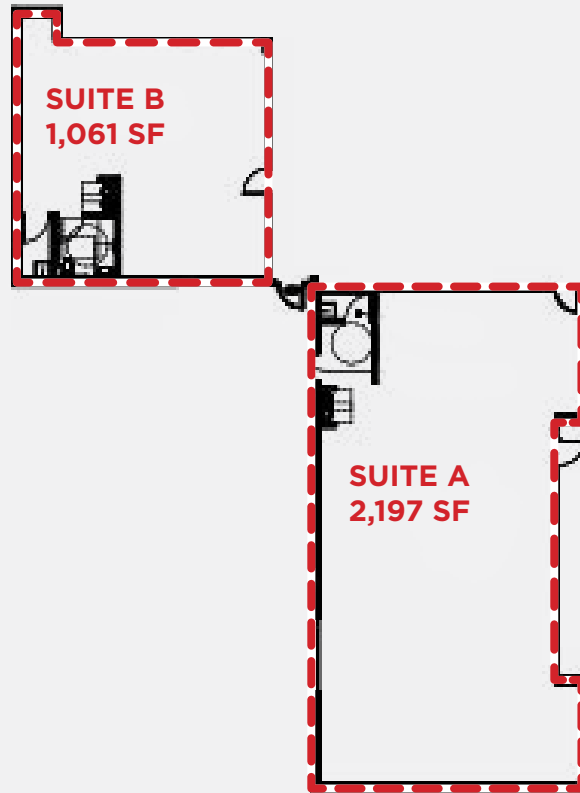
JAMIE GALANTI

804-433-1825
jgalanti
@commonwealthcommercial.com

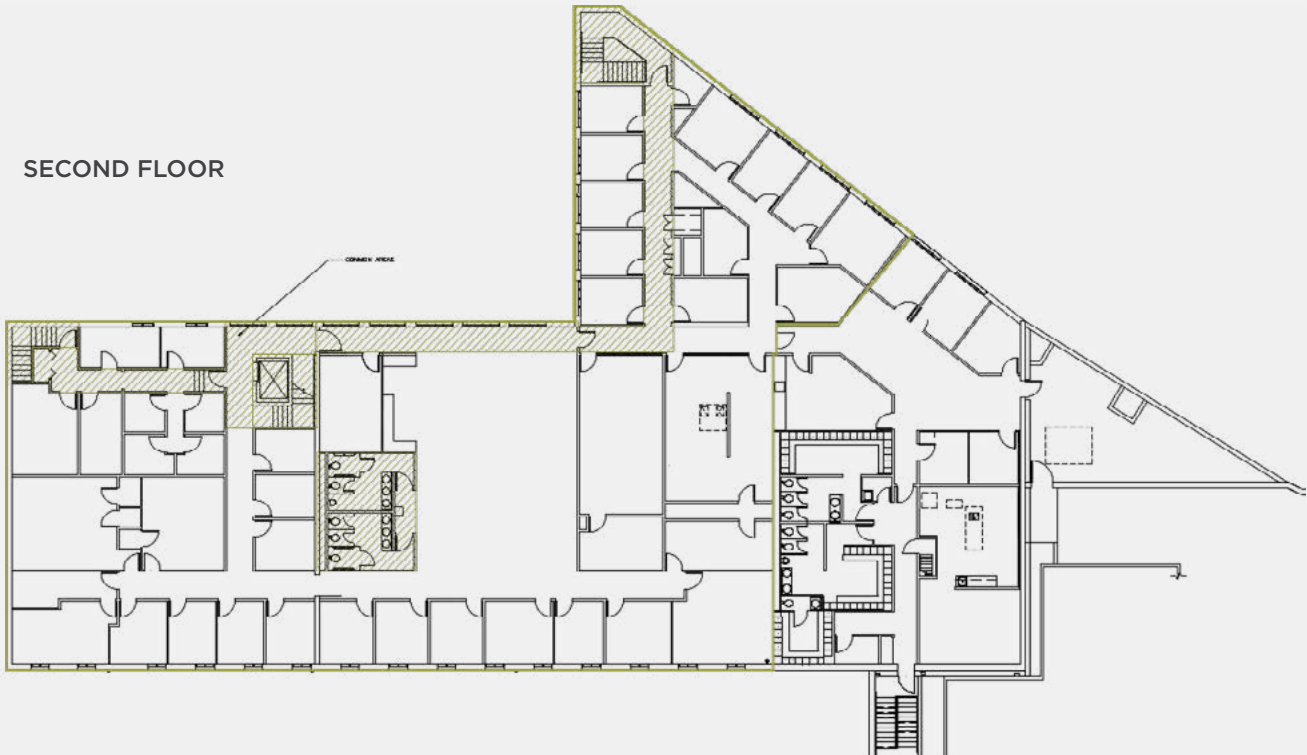


Floor plans

FIRST FLOOR



SECOND FLOOR





Area map

