

# FOR LEASE

GREAT LOCATION

# Libbie Professional Center

5700 Old Richmond Avenue | Richmond, VA 23226



COMMONWEALTH  
COMMERCIAL  
Comprehensive Property Solutions



## RECENTLY RENOVATED VACANCIES!

## PROPERTY HIGHLIGHTS

- › Ideal for medical or professional office use
- › **AVAILABLE SUITE**  
Suite E-21: 1,347± SF
  - Can be subdivided into two suites of 668 & 679± SF
- › Close proximity to St. Mary's Hospital, Libbie Place & Willow Lawn
- › Excellent surface parking (5 spaces/1,000 SF)
- › Close to dining and amenities along W Broad Street
- › Contact agent for pricing

DEMOGRAPHICS	1 MILE	3 MILE	5 MILE
POPULATION	10,423	87,323	254,485
AVERAGE HH INCOME	\$121,349	\$111,066	\$94,680
DAYTIME EMPLOYEES	18,925	82,138	217,086

### FOR MORE INFORMATION:

#### TUCKER DOWDY, SIOR

Senior Vice President | Partner

804-228-4932

[tdowdy@commonwealthcommercial.com](mailto:tdowdy@commonwealthcommercial.com)

#### ROBBIE BERNDT

Senior Associate

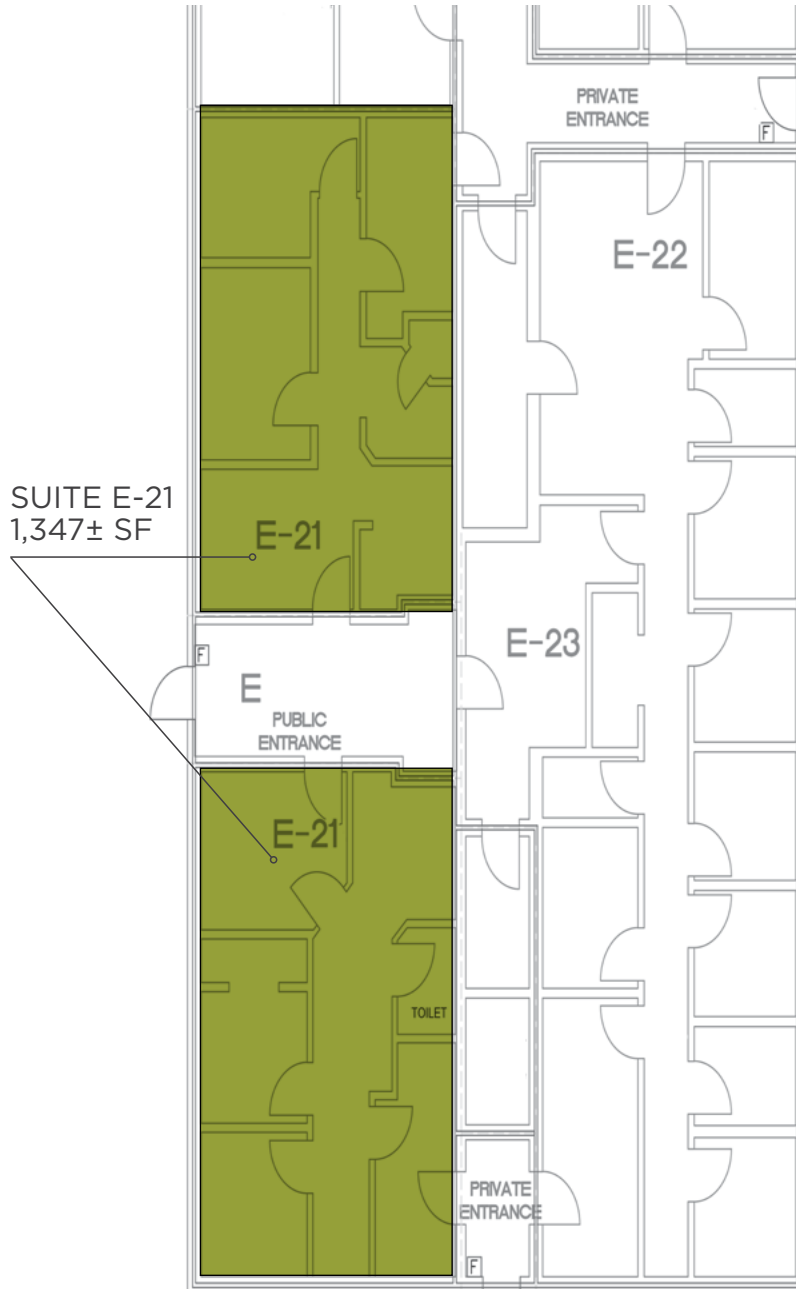
804-968-1151

[rberndt@commonwealthcommercial.com](mailto:rberndt@commonwealthcommercial.com)

Commonwealth Commercial Partners, LLC represents the Landlord of this property. Information contained herein is deemed reliable but is not guaranteed.

# FLOOR PLANS

CAN BE SUBDIVIDED INTO TWO  
SUITES OF 668 & 679± SF





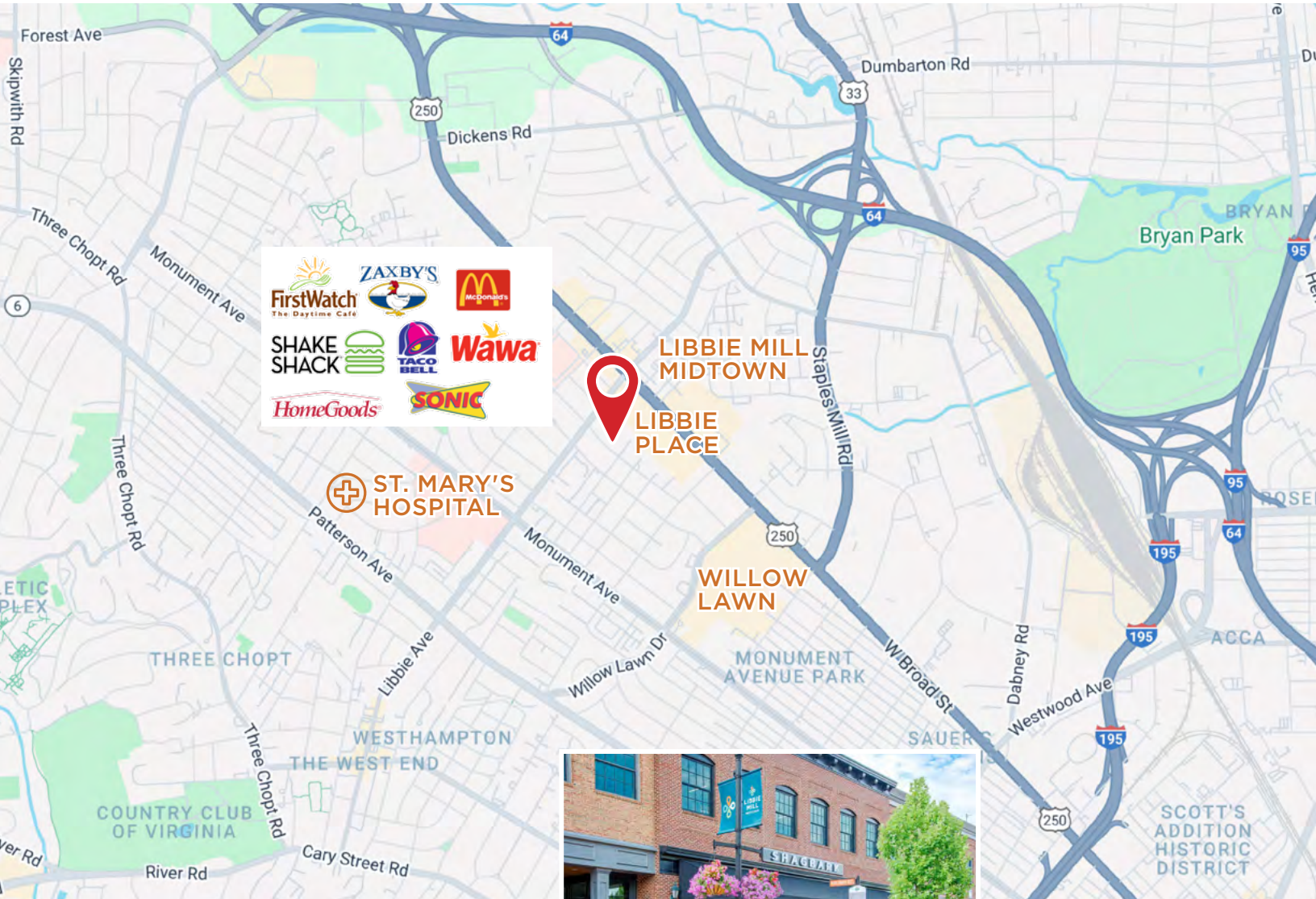
FOR LEASE | 5700 OLD RICHMOND AVENUE | RICHMOND, VA 23226

## THE SHOPS AT WILLOW LAWN

It offers a variety of retail and dining options, making it a popular destination for both locals and visitors.



3 Minutes  
0.8 Miles



## LIBBIE PLACE SHOPPING CENTER

The shopping center offers a variety of retail options and is known for its convenient location and accessibility.



1 Minutes



2 Minutes  
0.5 Miles

## LIBBIE MILL MIDTOWN

located between Staples Mill Road and Libbie Avenue, just south of I-64.

