

FOR LEASE

WAREHOUSE/FLEX

Industrial/Flex

541-571 Eastpark Court | Sandston, VA 23150



COMMONWEALTH
COMMERCIAL
Comprehensive Property Solutions



PROPERTY HIGHLIGHTS

- › 16,200 SF office/warehouse (subdividable)
- › Tilt-up concrete construction
- › 21' clear ceiling height
- › 2 x 16' drive in doors, 1 x 12' drive in door
- › 3 Phase 120/208V, 800A service
- › M-1 zoning (Henrico County Light Industrial)
- › 40+ striped parking spaces available
- › Convenient access to I-64 & RIC Airport
- › Significant TI Upfit Allowance Available
- › Call Agents for More Info

FOR MORE INFORMATION:

JAMIE GALANTI, CCIM, SIOR

Senior Vice President | Partner

804-433-1825

jgalanti@commonwealthcommercial.com

Commonwealth Commercial Partners, LLC represents the Landlord of this property. Information contained herein is deemed reliable but is not guaranteed.

EASTPARK COURT PORTFOLIO

551 Eastpark Court

Size	6,000 SF
Ceiling	18'-21' clear
Roll up doors	Two 10' x 12'
Power	3 Phase 120/208V 800 Amp service

561 Eastpark Court

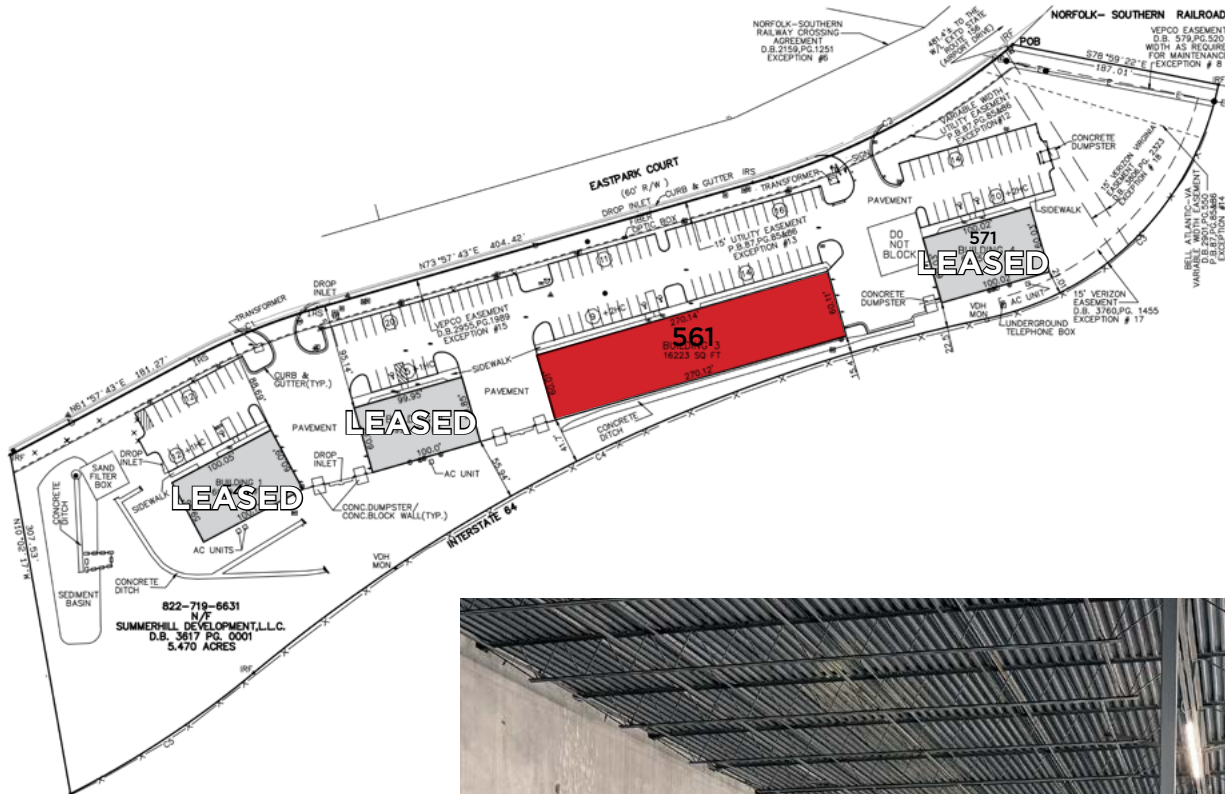
Size	8,100-16,200 SF (subdividable)
Ceiling	18'-21' clear
Roll up doors	Two 12' x 16'
Power	3 Phase 120/208V 800 Amp service

Available

Immediately

541 & 571 Eastpark Court

Size	6,000 SF
Ceiling	18'-21' clear
Roll up doors	Two 10' x 12'
Power	3 Phase 120/208V 800 Amp service



561 Eastpark Warehouse Conversion
COMPLETE July 2025

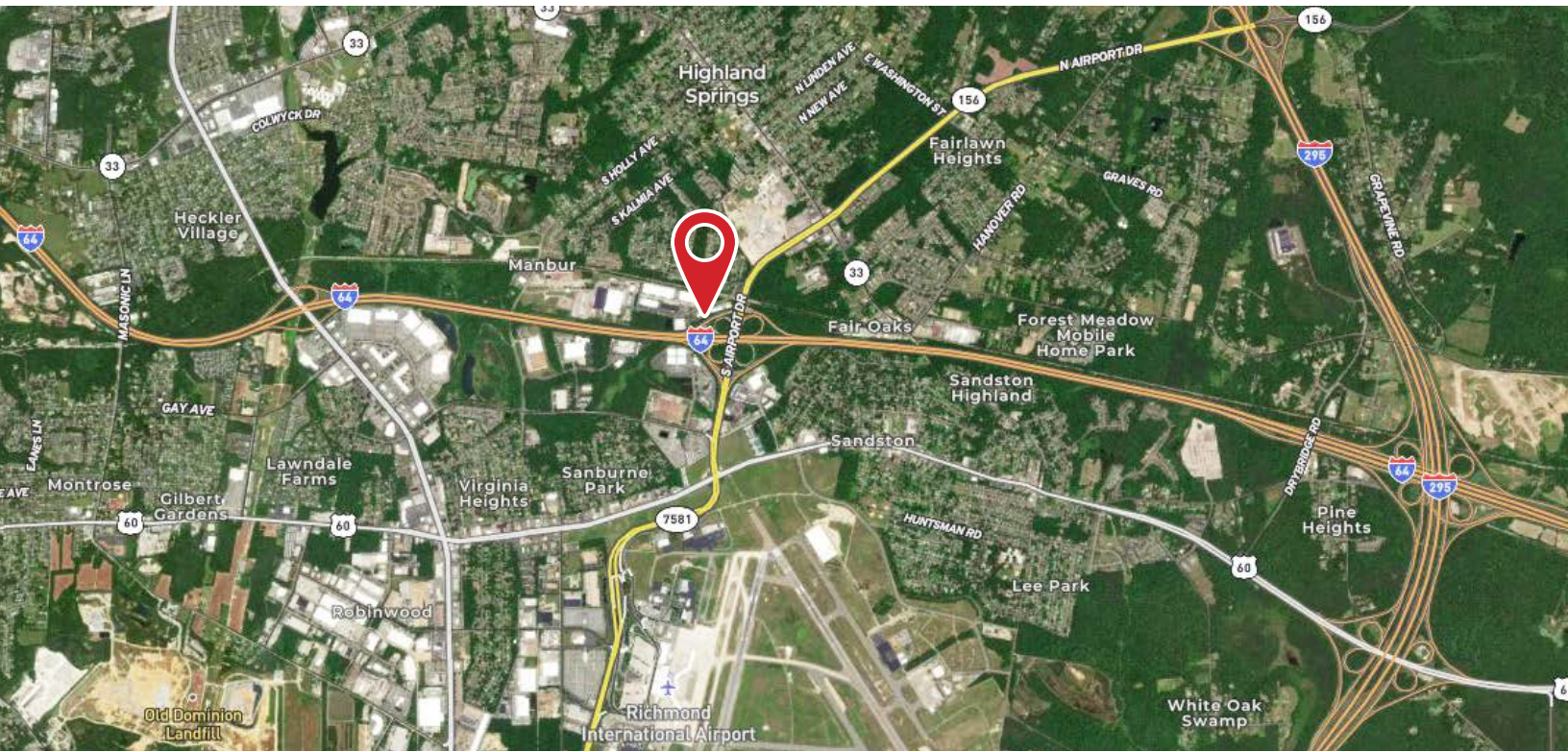
551 Eastpark Court Building
6,000 SF warehouse/flex space



561 Eastpark Court Building
16,200 SF warehouse/flex space



CONVENIENT TO INTERSTATE 64 & 295



PROXIMITY FROM EASTPARK COURT

- Washington DC - **109 Miles**
- Baltimore - **143 Miles**
- Raleigh - **160 Miles**
- Richmond International Airport - **2 Miles**
- Richmond Marine Terminal - **11.5 Miles**
- Norfolk Marine Terminal - **87 Miles**
- Virginia International Gateway - **94 Miles**

- 1-DAY TRUCK DELIVERY (11 HOURS)
- 750-MILE RADIUS



FOR LEASE | 541-571 EASTPARK COURT | SANDSTON, VA 23150