

FOR LEASE

HISTORIC BUILDING

Office Space

5101 Monument Avenue | Richmond, VA 23230



COMMONWEALTH
COMMERCIAL
Comprehensive Property Solutions



PROPERTY HIGHLIGHTS

- › Historic Building located at the intersection of Monument Avenue and Willow Lawn!
- › Suites available starting at 634± SF up to 2,756± SF
- › Abundant parking (4.5 spaces per 1,000± SF)
- › Numerous nearby amenities at Willow Lawn including Cava, Starbucks, Chopt Salad Co, Panera Bread & many more!
- › Recently renovated interior
- › **CONTACT AGENTS FOR PRICING**

FOR MORE INFORMATION:

JAMIE GALANTI, CCIM, SIOR

Senior Vice President | Partner

804-433-1825

jgalanti@commonwealthcommercial.com

TUCKER DOWDY, SIOR

Senior Vice President | Partner

804-228-4932

tdowdy@commonwealthcommercial.com

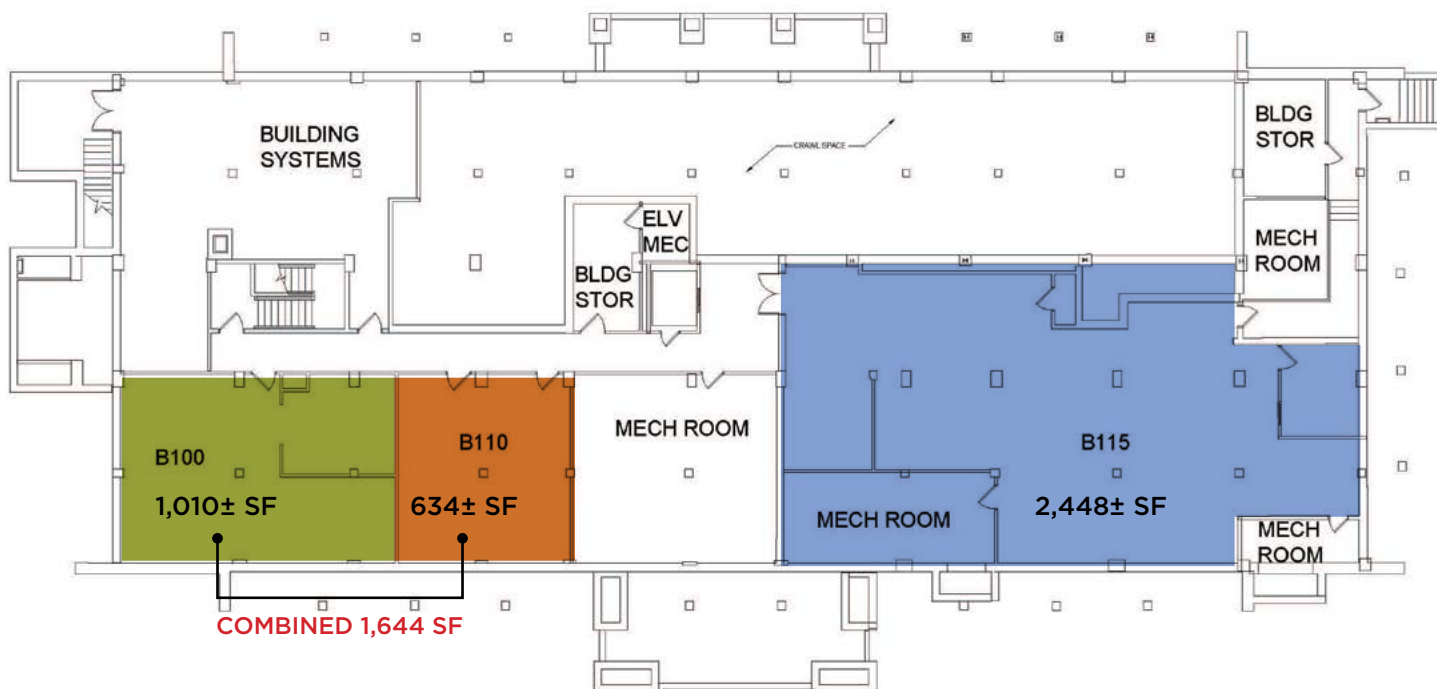
Commonwealth Commercial Partners, LLC represents the Landlord of this property. Information contained herein is deemed reliable but is not guaranteed.

FLOOR PLANS

BASEMENT FLOOR

AVAILABLE SUITES

B100	1,010 SF
B110	634 SF
B115	2,448 SF



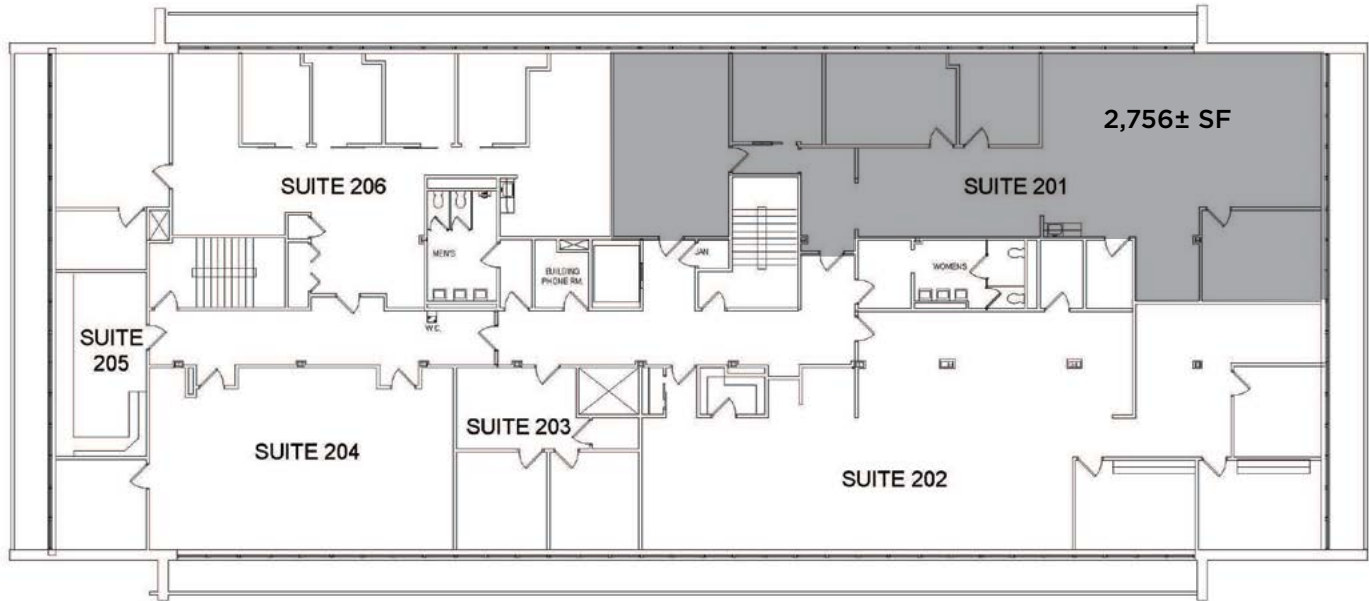
FLOOR PLANS

SECOND FLOOR

AVAILABLE SUITES

201

2,756 SF



LOCATION IS EVERYTHING

