

FOR SALE

URBAN LAND

Orville Road

4800 Thalbro Street | Richmond, VA 23230



COMMONWEALTH
COMMERCIAL
Comprehensive Property Solutions



source: www.marchetti.dev

PROPERTY HIGHLIGHTS

- › 6.8± AC zoned M-1 and M-2
- › Seller will wait on rezoning, property will be vacant at sale
- › Virginia DEQ - Voluntary Remediation Program Certificate of Approval Granted
- › Located in the Westwood Area Special Overlay District
- › Close proximity to St. Mary's Hospital, Libbie Place & Willow Lawn
- › Adjacent to Kinsale's \$500M redevelopment
- › Do not disturb tenant
- › Contact agent for pricing

DEMOGRAPHICS	1 MILE	3 MILE	5 MILE
POPULATION	10,423	87,323	254,485
AVERAGE HH INCOME	\$121,349	\$111,066	\$94,680
DAYTIME EMPLOYEES	18,925	82,138	217,086

FOR MORE INFORMATION:

RYAN FANELLI

Senior Vice President | Partner

804-400-6163

rfanelli@commonwealthcommercial.com

BEN BRUNI, SIOR

Senior Vice President | Partner

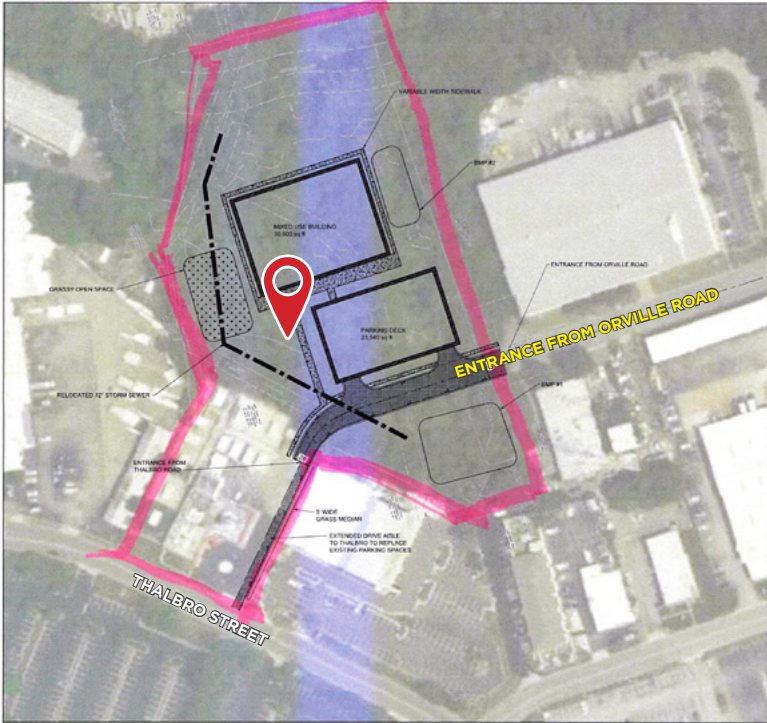
804-793-0046

bbruni@commonwealthcommercial.com

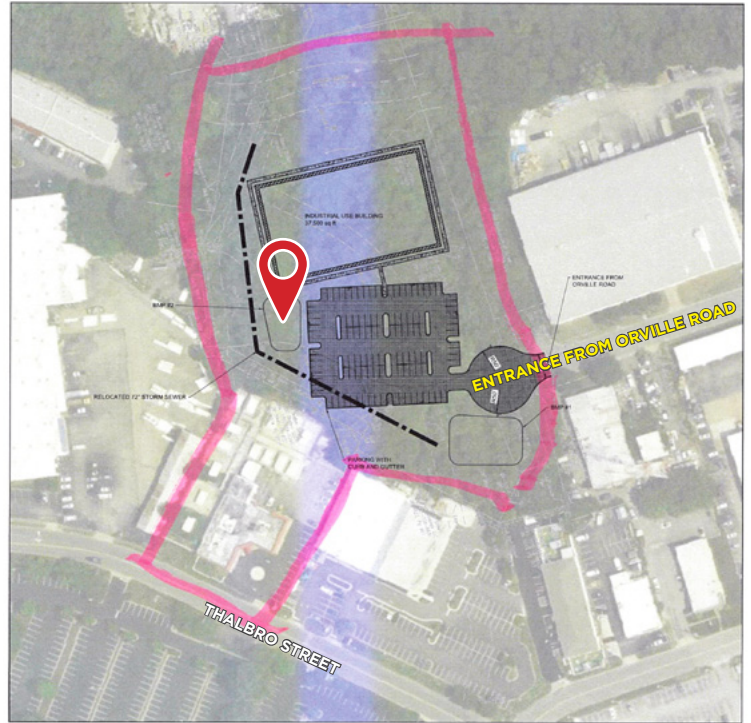
Commonwealth Commercial Partners, LLC represents the Owner of this property. Information contained herein is deemed reliable but is not guaranteed.

ZONING OPTIONS

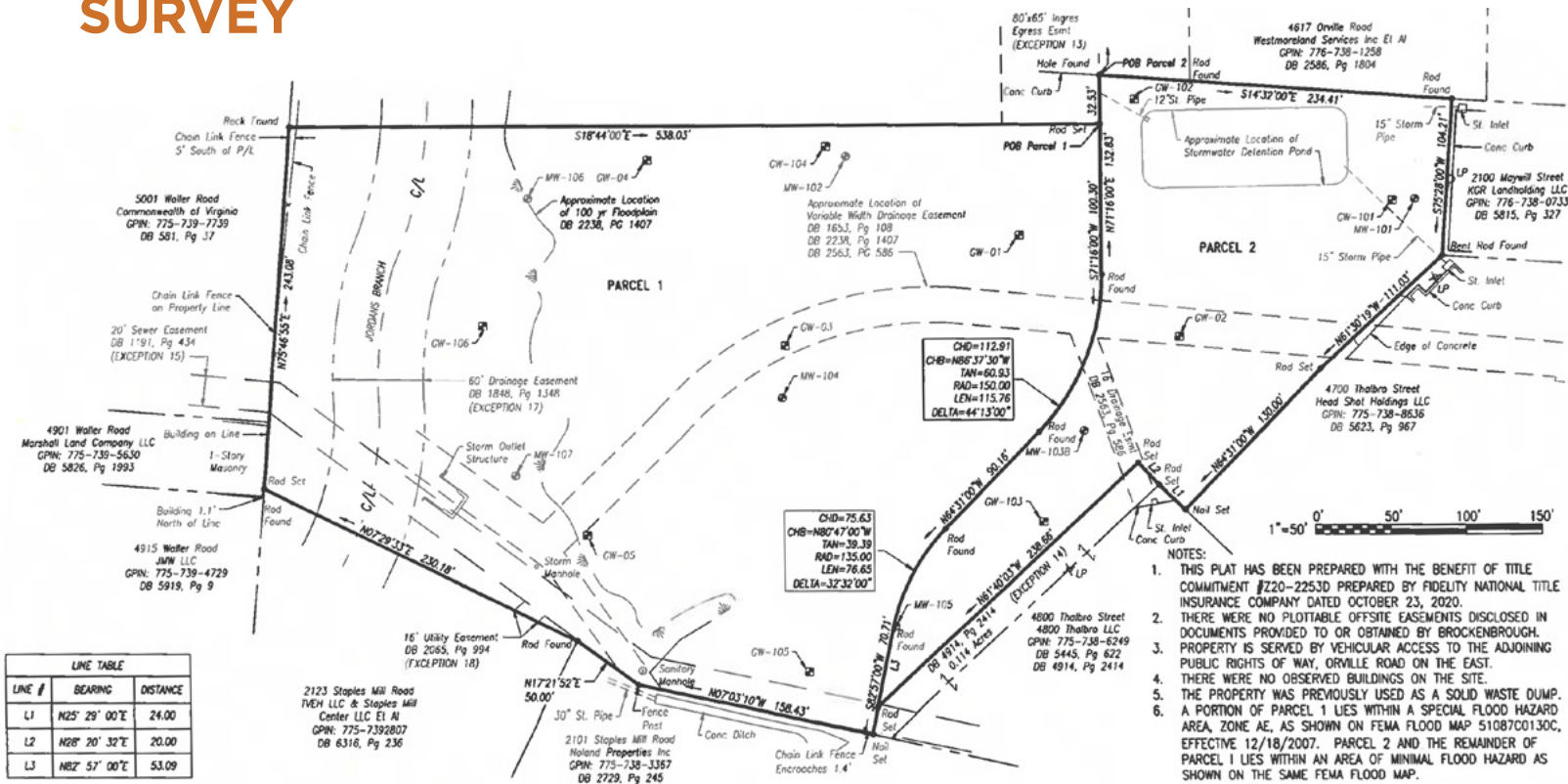
MIXED-USE BUILDING / PARKING DECK



INDUSTRIAL USE BUILDING / PARKING



SURVEY

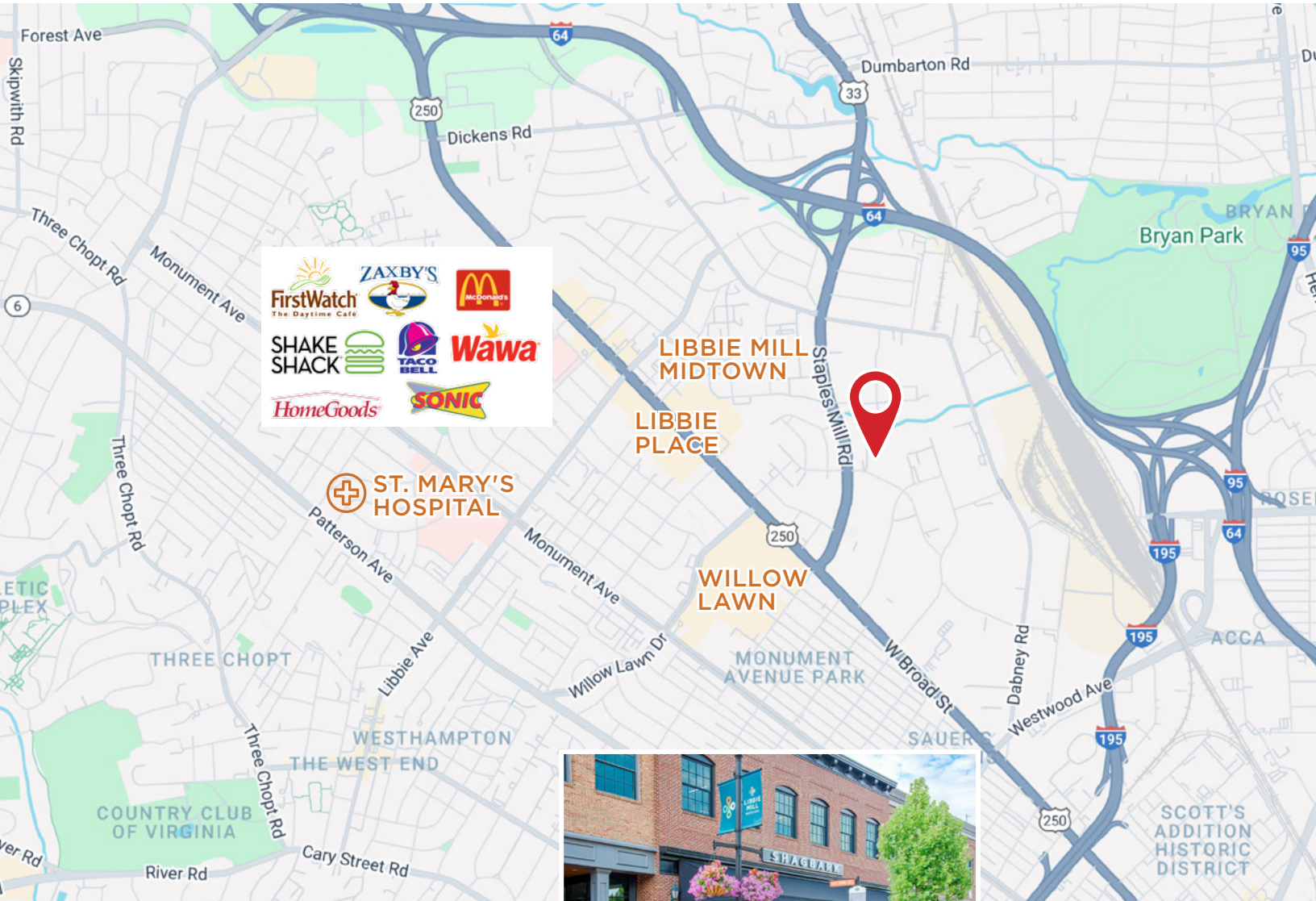


THE SHOPS AT WILLOW LAWN

It offers a variety of retail and dining options, making it a popular destination for both locals and visitors.



2 Minutes
0.4 Miles



LIBBIE PLACE SHOPPING CENTER

The shopping center offers a variety of retail options and is known for its convenient location and accessibility.



1 Minutes



2 Minutes
0.4 Miles

LIBBIE MILL MIDTOWN

Located between Staples Mill Road and Libbie Avenue, just south of I-64.

