

# SALE/ LEASE

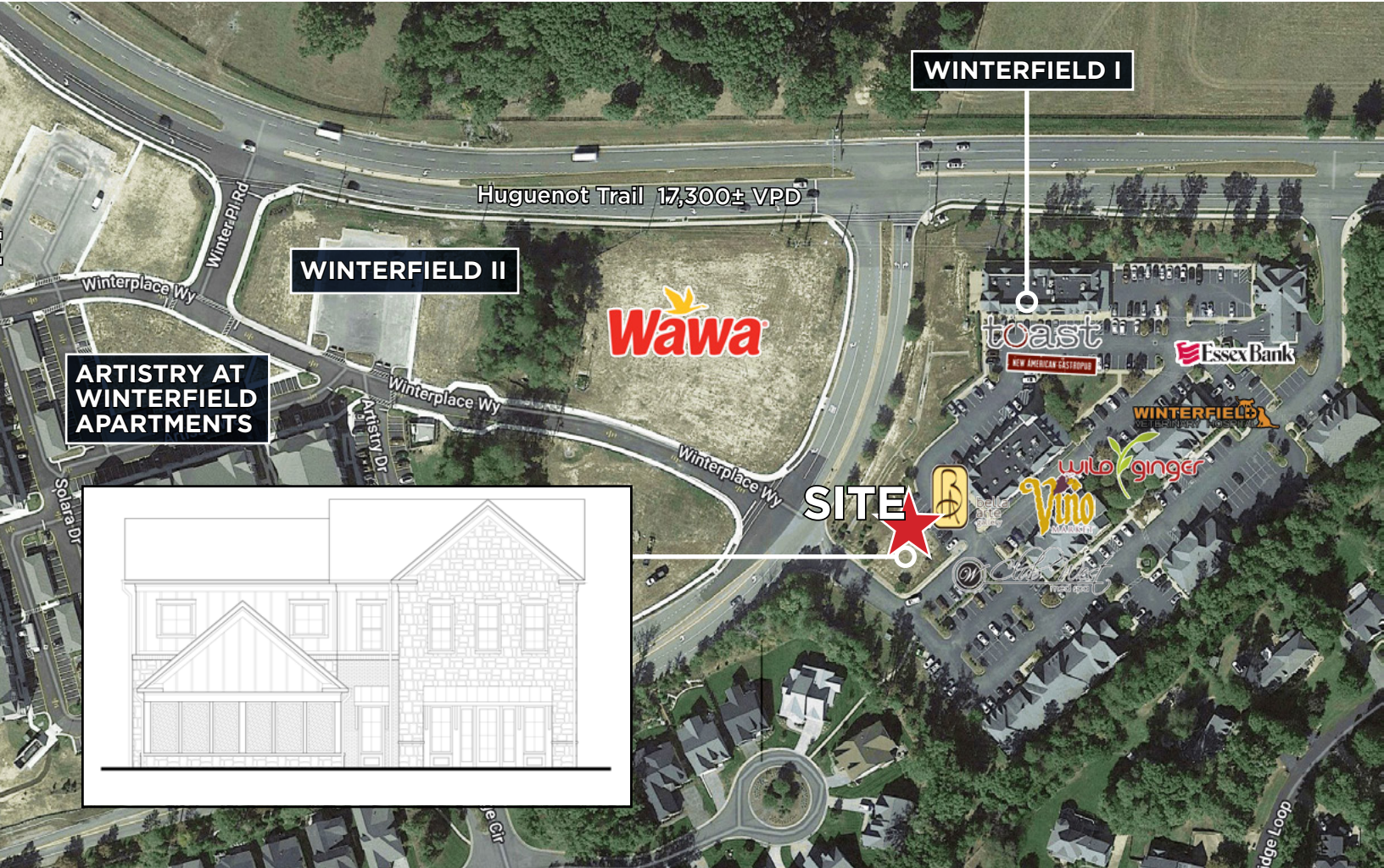
RETAIL AND OFFICE

## Winterfield Place I

3738 Winterfield Road | Midlothian, VA 23113



COMMONWEALTH  
COMMERCIAL  
Comprehensive Property Solutions



### PROPERTY HIGHLIGHTS

- › Up to 5,000± SF condo for sale or lease
- › High end retail and 180 unit multi-family development at prime corner location
- › Highest demographics in the Richmond MSA
- › Signalized intersection at corner of Winterfield and Huguenot Trail
- › Please contact broker for pricing

| DEMOGRAPHICS      | 1 MILE    | 3 MILE    | 5 MILE    |
|-------------------|-----------|-----------|-----------|
| POPULATION        | 2,850     | 18,882    | 65,337    |
| AVERAGE HH INCOME | \$259,703 | \$259,752 | \$194,253 |
| DAYTIME EMPLOYEES | 398       | 4,128     | 26,101    |

### FOR MORE INFORMATION:

#### JOE BUHRMAN

Senior Vice President

804-433-1811

[jbuhrman@commonwealthcommercial.com](mailto:jbuhrman@commonwealthcommercial.com)

#### JIM MCVEY

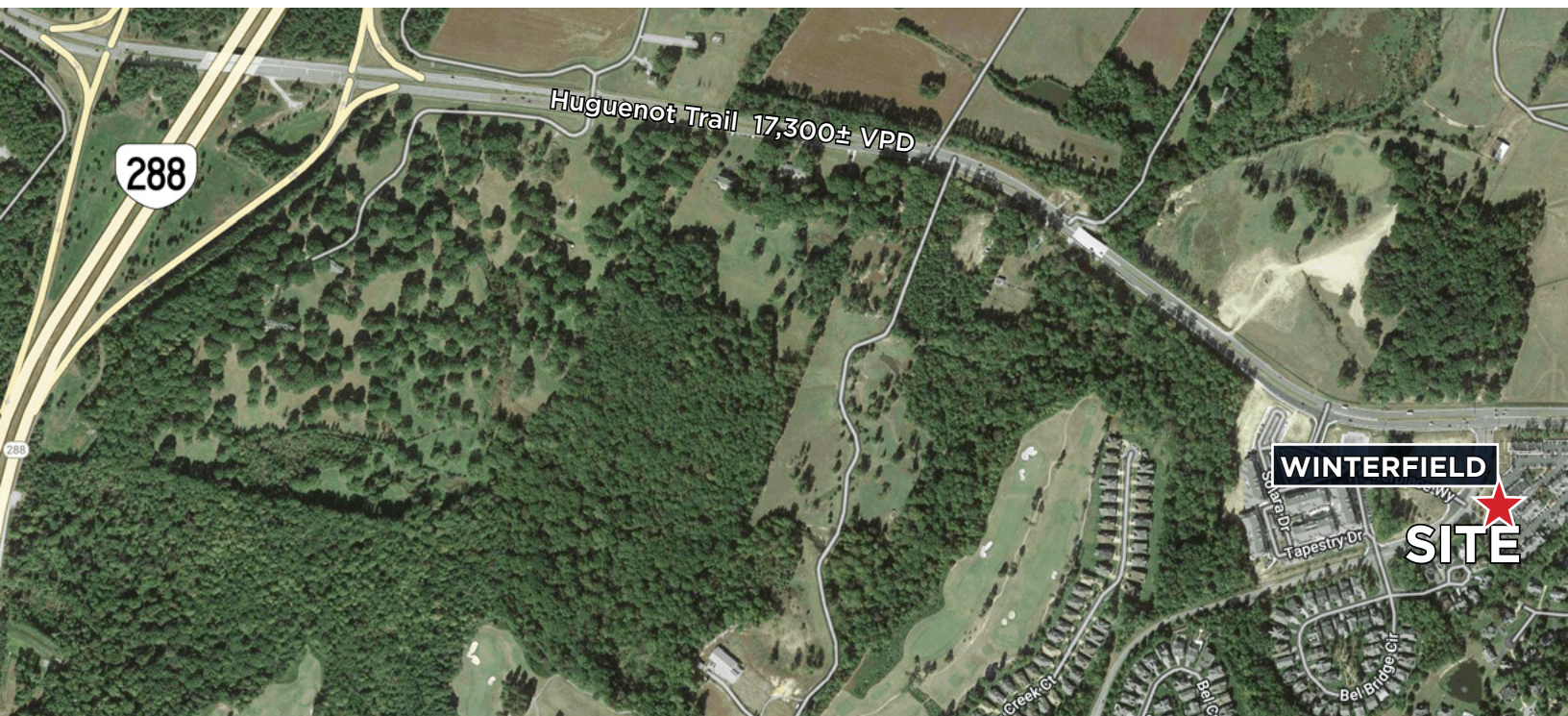
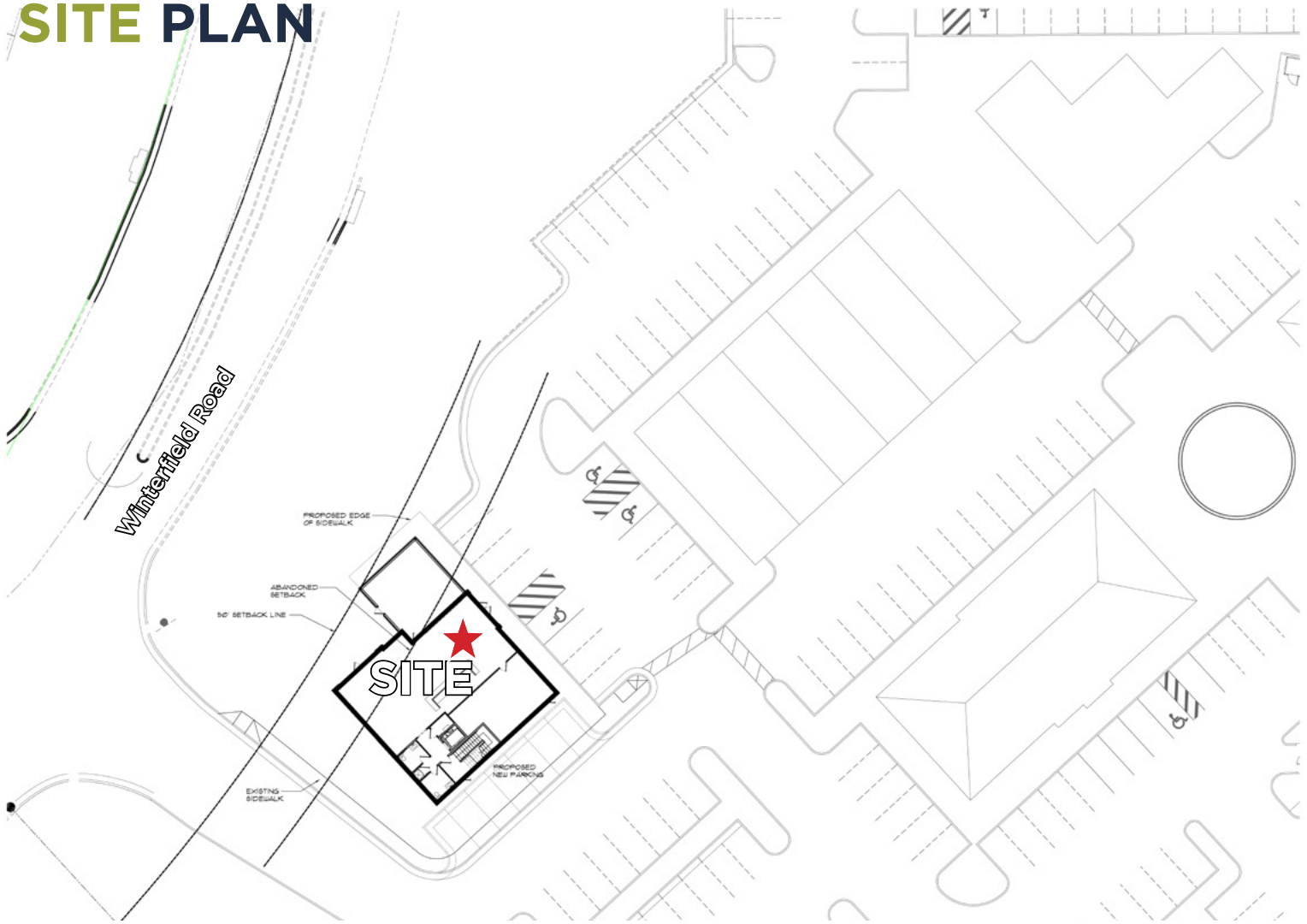
Senior Vice President | Partner

804-443-1824

[jmcvey@commonwealthcommercial.com](mailto:jmcvey@commonwealthcommercial.com)

Commonwealth Commercial Partners, LLC represents the owner of this property. Information contained herein is deemed reliable but is not guaranteed.

# SITE PLAN



FOR SALE/LEASE | 3738 WINTERFIELD ROAD | MIDLOTHIAN, VA 23113