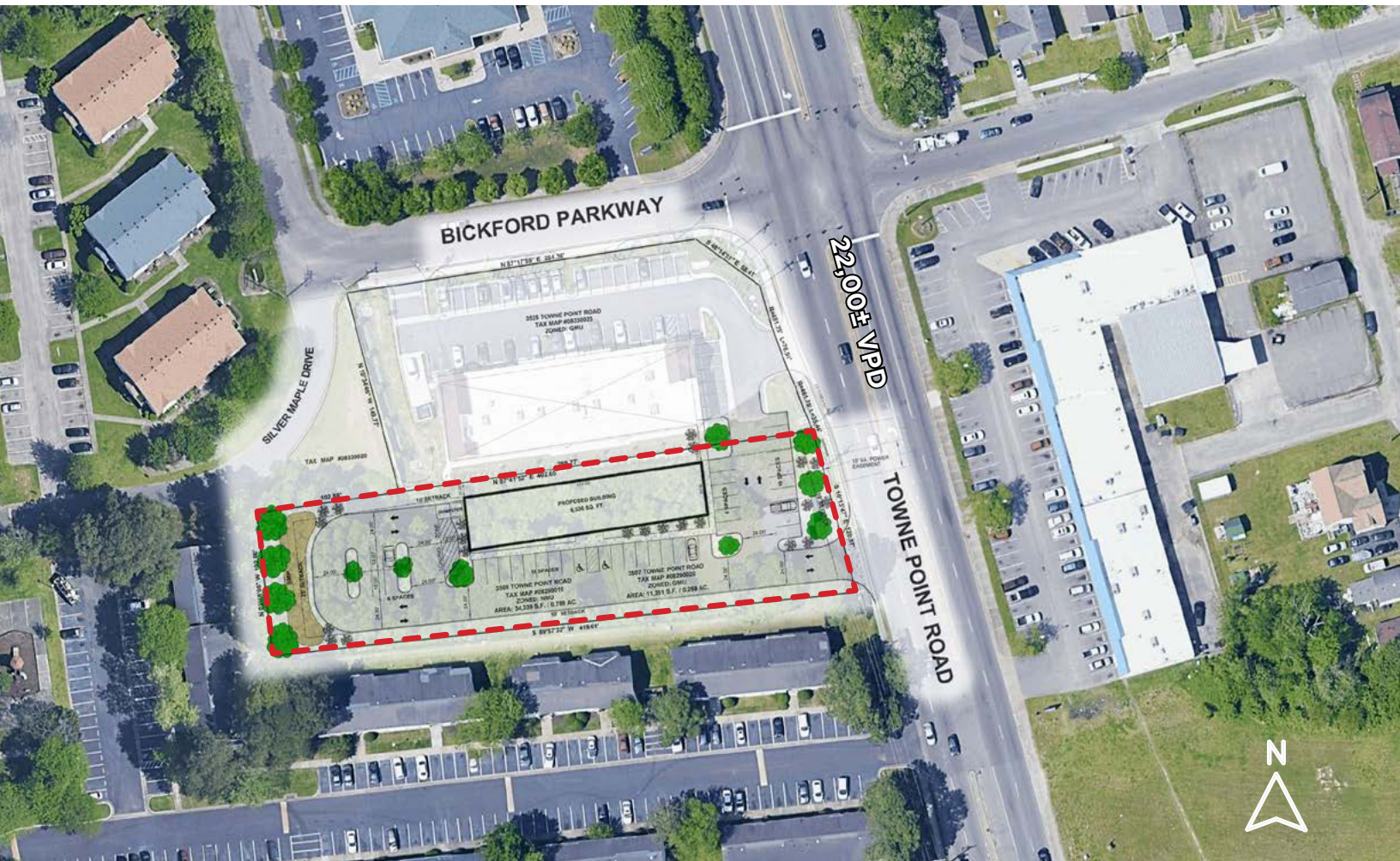


AVAILABLE

Commercial Outparcel

3509 Towne Point Road | Portsmouth, VA 23703



PROPERTY HIGHLIGHTS

- › Build to Suit or Ground Lease Opportunity
- › Zoning: NMU - Neighborhood Mixed Use
- › Ideal for Office & Retail Uses
- › Immediate access to Rte. 164 and Rte. 17
- › Easy access to I-264
- › Purchase offers considered
- › Call agent for pricing

DEMOGRAPHICS	1 MILE	3 MILE	5 MILE
TOTAL POPULATION	13,969	61,030	115,855
AVERAGE HH INCOME	\$70,300	\$95,007	\$88,973
DAYTIME EMPLOYEES	4,580	40,391	58,410

FOR MORE INFORMATION:

GRESH WALL

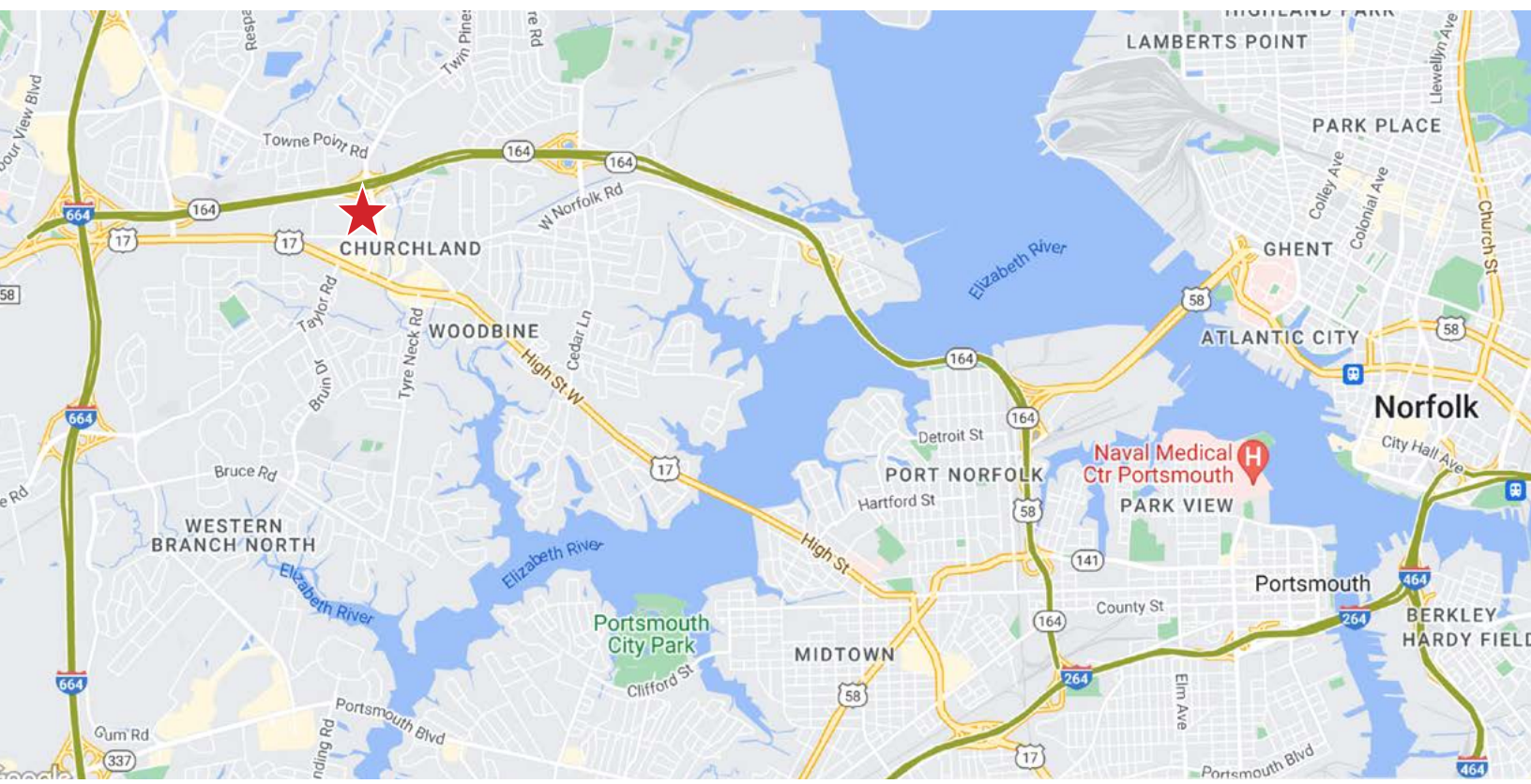
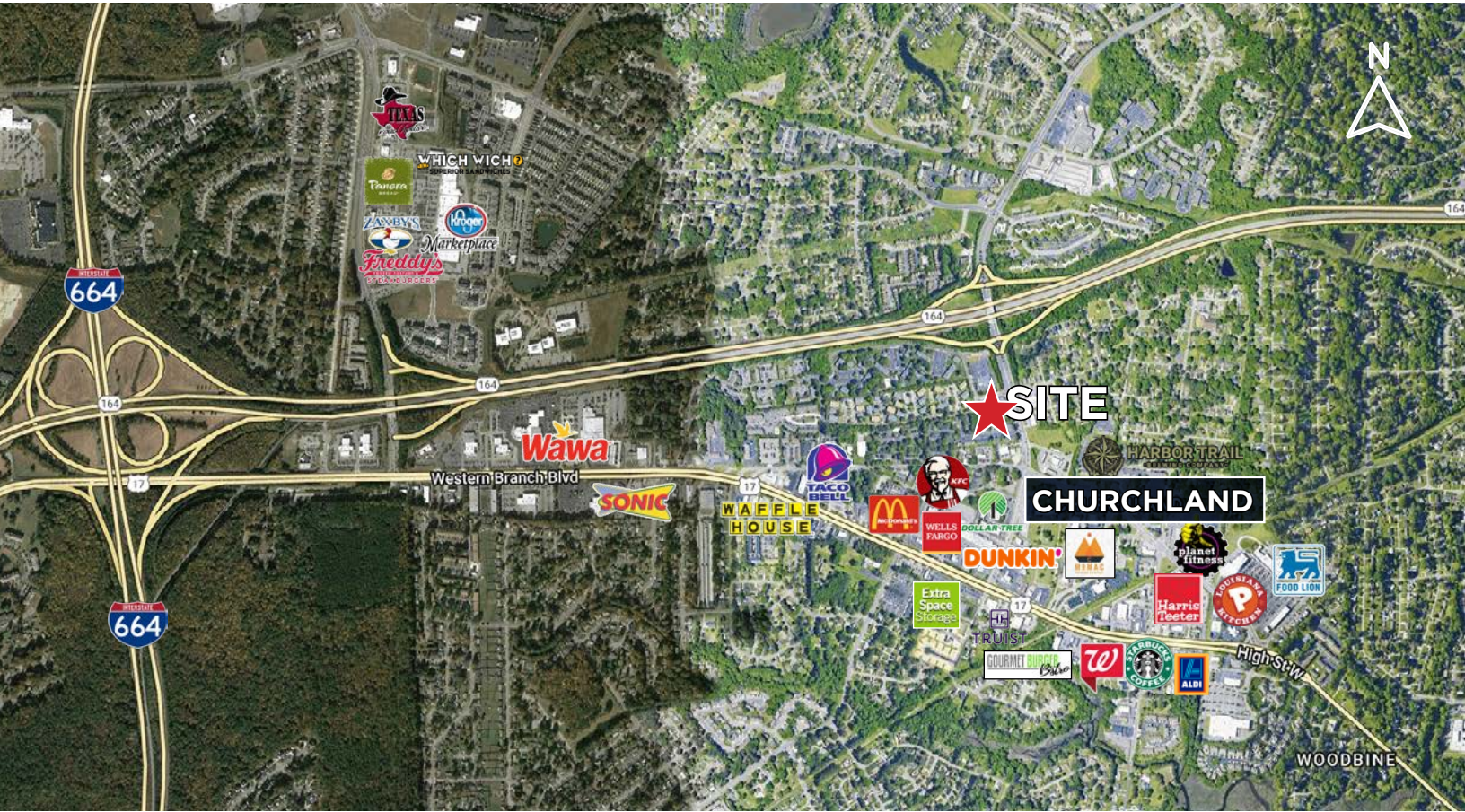
Managing Director - Hampton Roads
757-461-4732
gwall@commonwealthcommercial.com

NOAH REYES

Senior Associate
757-377-8580
nreyes@commonwealthcommercial.com

Commonwealth Commercial Partners, LLC represents the Owner of this property. Information contained herein is deemed reliable but is not guaranteed.

CHURCHLAND AREA



SALE/LEASE | 3509 TOWNE POINT ROAD | PORTSMOUTH, VA 23703