

FOR SALE

25± ACRES

Stonehouse Commerce Park

3500 LaGrange Parkway | Toano, VA 23168



COMMONWEALTH COMMERCIAL
Comprehensive Property Solutions



PROPERTY HIGHLIGHTS

- › 25± Acres in Stonehouse Commerce Park
- › Zoned PUD-C allowing most commercial/industrial uses
- › Estimated 13.4 Acres of Uplands - Corp approved
- › BMP in place with capacity
- › **Price Reduction: \$675,000**

| DEMOGRAPHICS | 1 MILE | 3 MILE | 5 MILE |
|-------------------|-----------|-----------|-----------|
| TOTAL POPULATION | 2,535 | 10,785 | 18,861 |
| AVERAGE HH INCOME | \$134,856 | \$123,163 | \$118,712 |
| DAYTIME EMPLOYEES | 1,162 | 2,642 | 4,352 |

FOR MORE INFORMATION:

RYAN FANELLI

Senior Vice President | Partner

804-400-6163

rfanelli@commonwealthcommercial.com

BRENT ALTAFFER

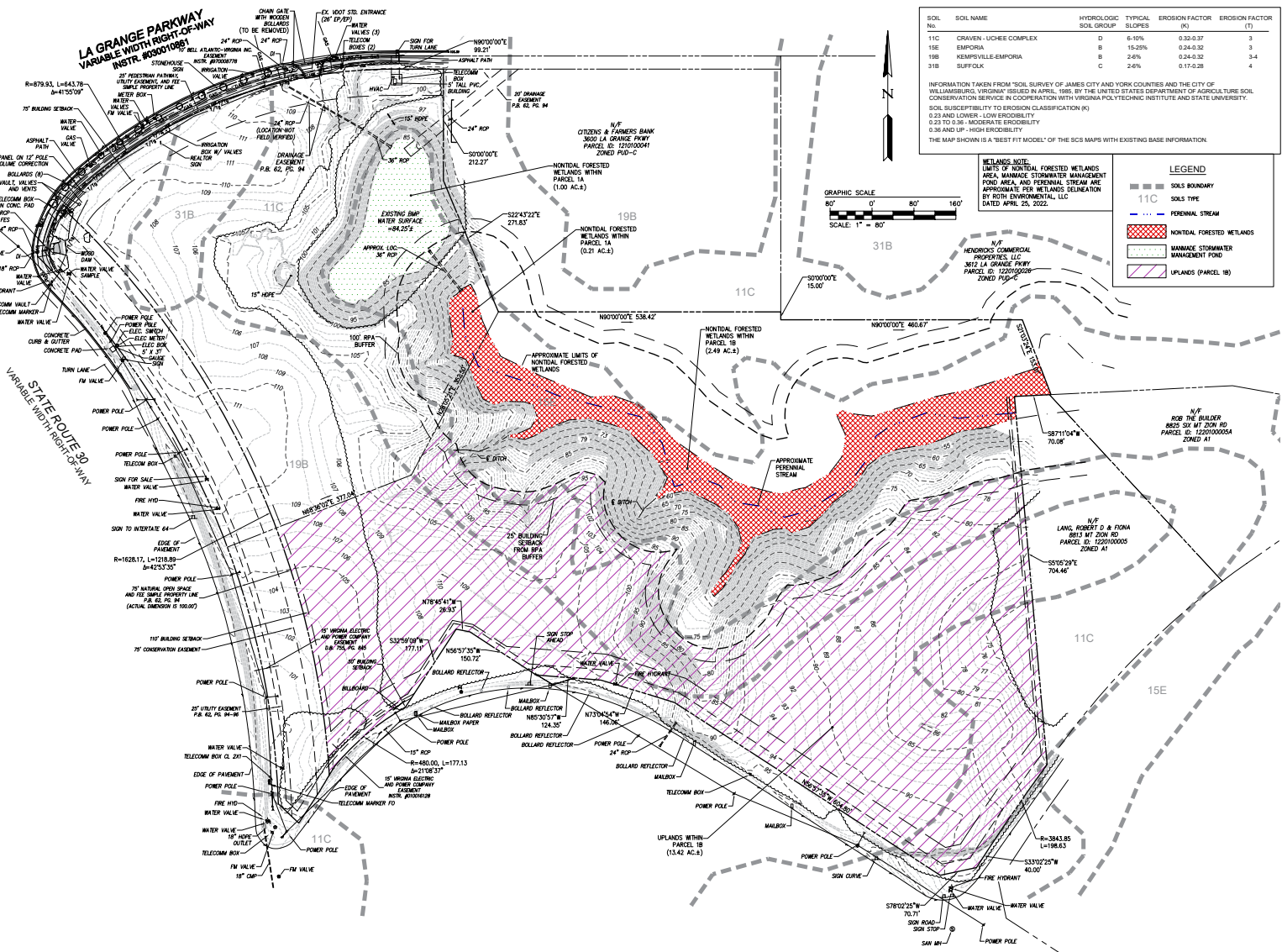
Associate | Land Sales

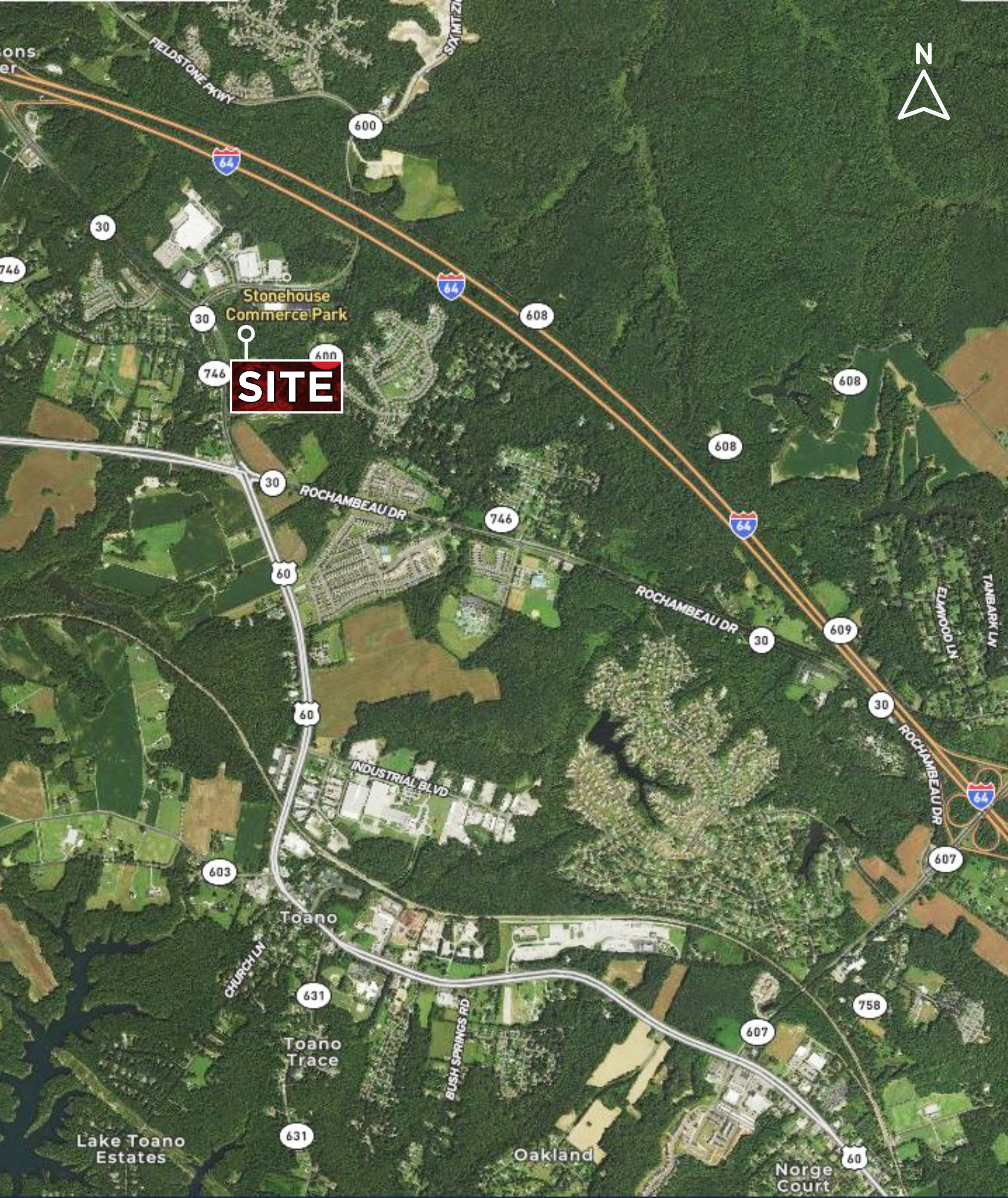
804-793-0055

baltaffer@commonwealthcommercial.com

Commonwealth Commercial Partners, LLC represents the Owner of this property. Information contained herein is deemed reliable but is not guaranteed.

UPLANDS EXHIBIT





FOR SALE | 3500 LAGRANGE PARKWAY | TOANO, VA 23168