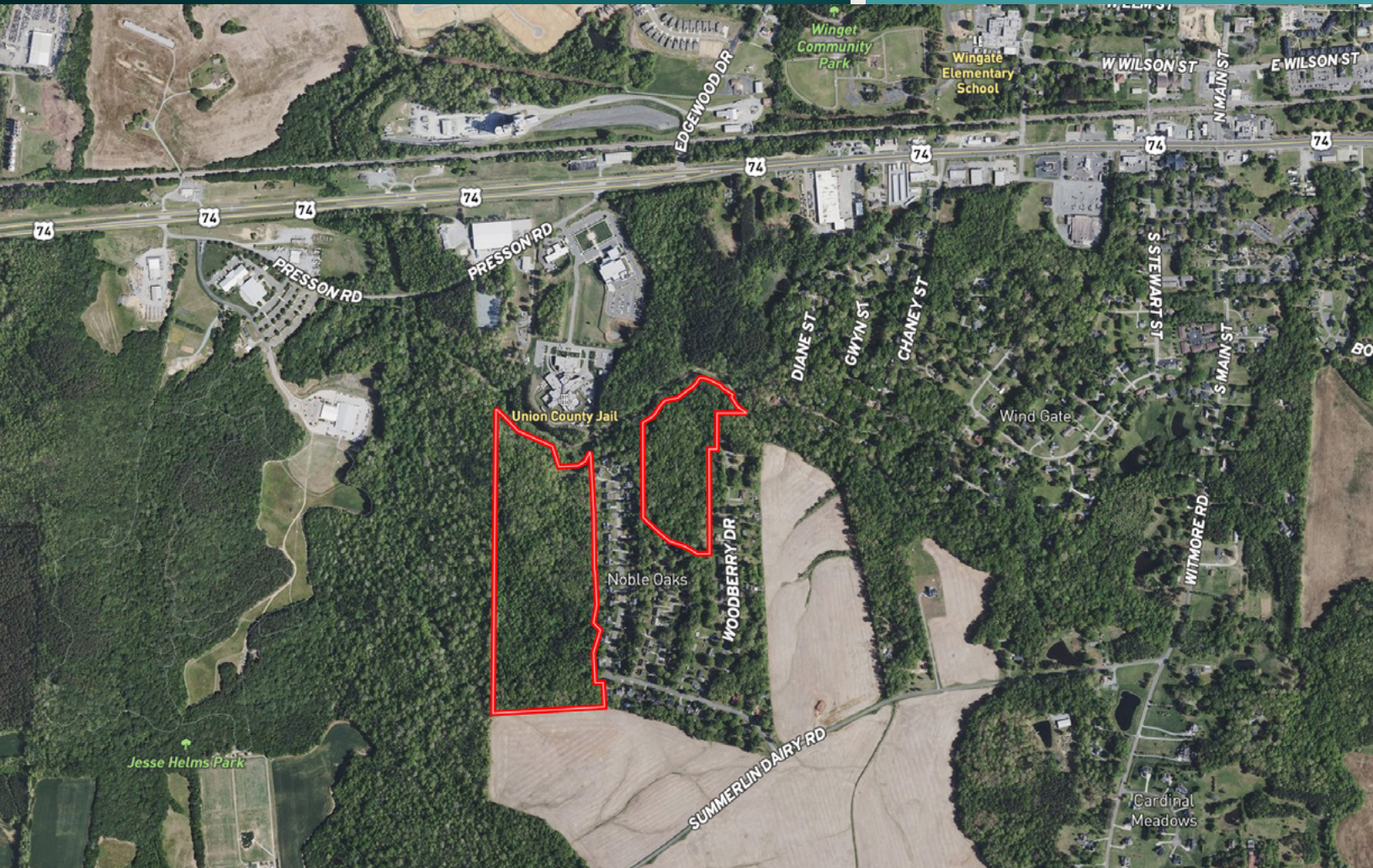


FOR SALE

310 Woodberry Drive (Union County)
Wingate, NC 28110



COMMONWEALTH
COMMERCIAL REAL ESTATE SOLUTIONS



Property Features

- 51± acres zoned for 20,000 SF lots - zoned RA-20
- Previously approved for 107 lots on water/sewer
- Ask agent for Restrictive Covenants
- Sale Price: \$1,300,000

Demographics	3 mile	5 mile	10 mile
2026 Population	10,819	28,122	91,272
Avg Household Income	\$80,841	\$80,396	\$89,303
Daytime Employment	5,751	16,448	33,418

For More Information:

Ryan Fanelli

Senior Vice President | Partner

o: 804-400-6163

rfanelli@commonwealthcommercial.com

Brent Altaffer

Vice President

o: 804-793-0055

baltaffer@commonwealthcommercial.com

David Oddo

Managing Director - Carolinas

o: 919-606-5933

doddo@commonwealthcommercial.com

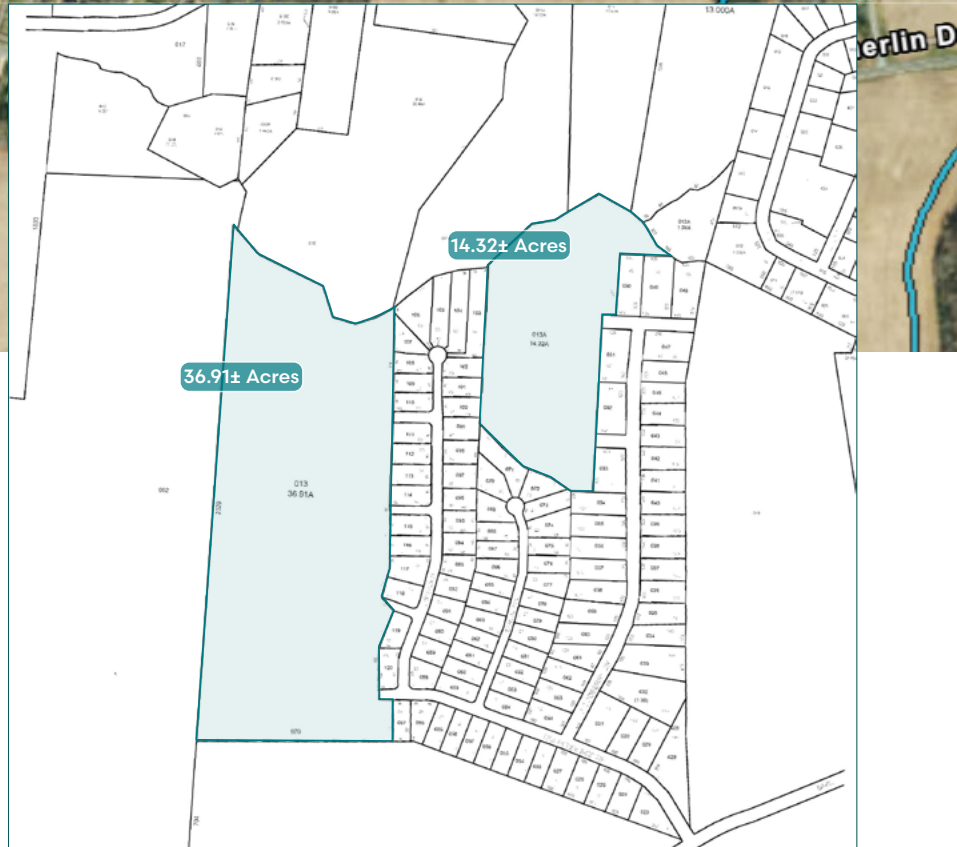
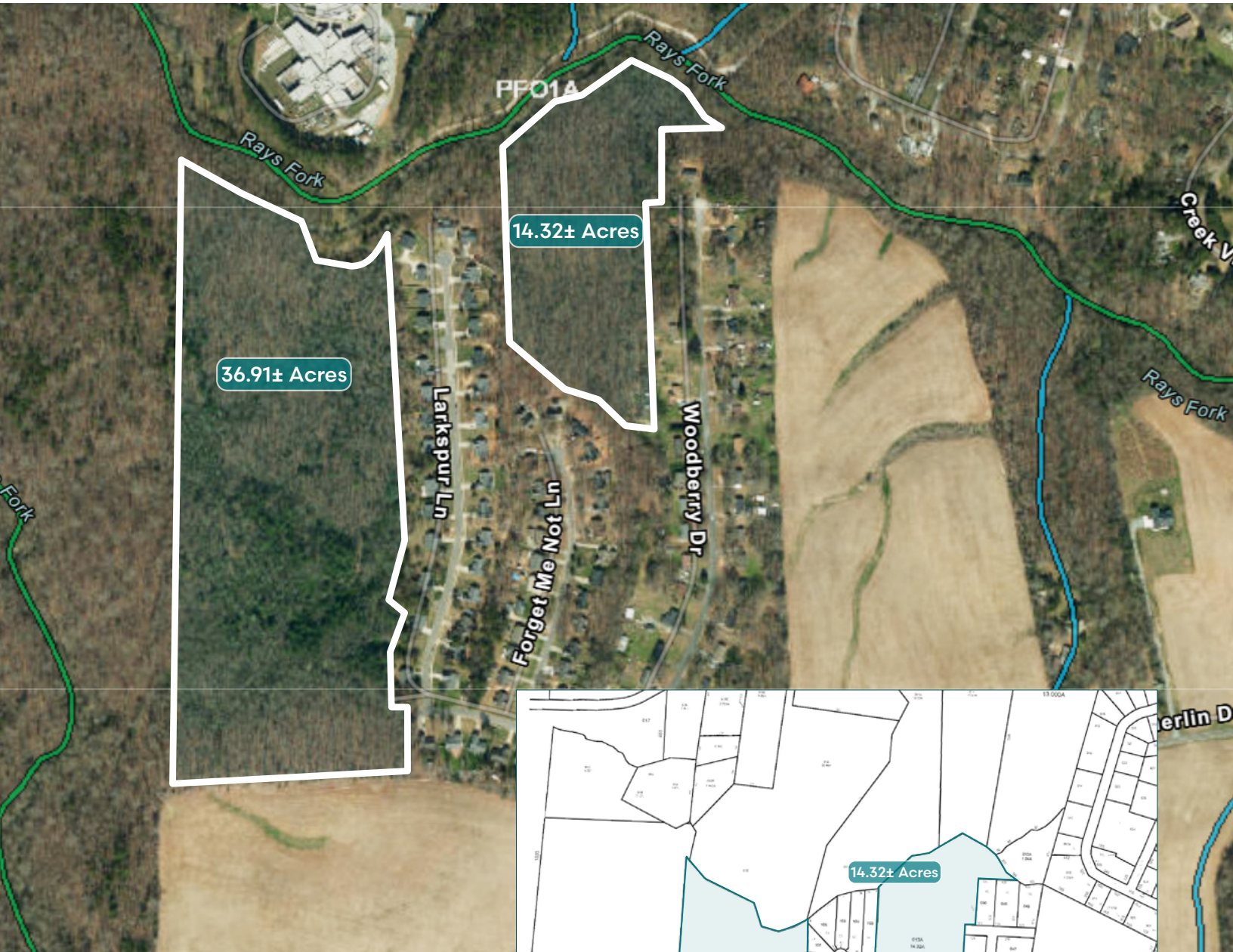
4198 Cox Road, Suite 200
Glen Allen, VA 23060

o: 804-346-4966

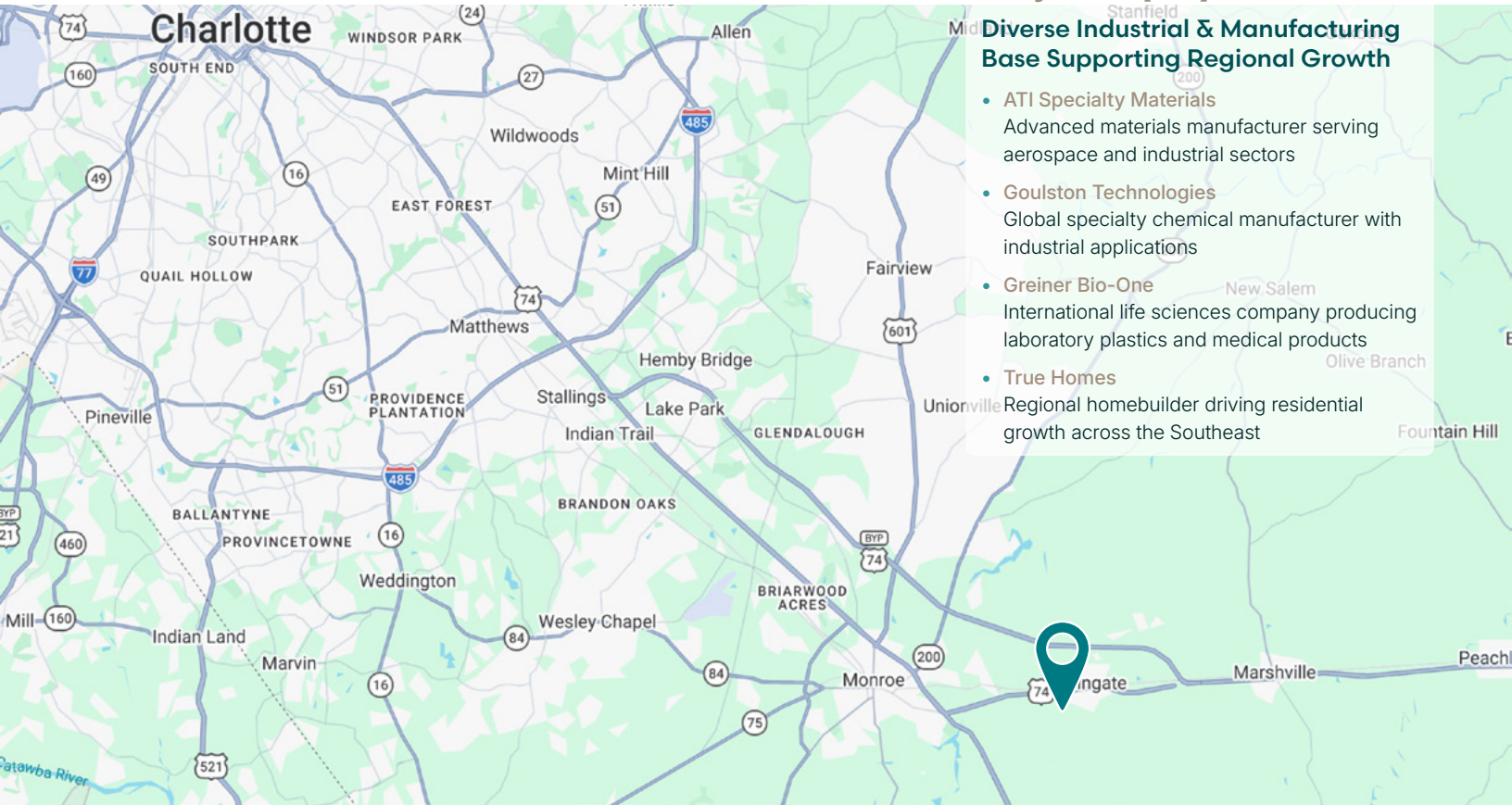
commonwealthcommercial.com

This document has been prepared for informational purposes only. All information contained herein has been obtained from sources believed to be reliable; however, no representation or warranty, express or implied, is made as to the accuracy or completeness of the information contained herein.

Zoned RA-20



Vicinity Map



Major Employers

Diverse Industrial & Manufacturing Base Supporting Regional Growth

- **ATI Specialty Materials**
Advanced materials manufacturer serving aerospace and industrial sectors
- **Goulston Technologies**
Global specialty chemical manufacturer with industrial applications
- **Greiner Bio-One**
International life sciences company producing laboratory plastics and medical products
- **True Homes**
Regional homebuilder driving residential growth across the Southeast

↑ **Strategically positioned just outside Charlotte, Monroe is experiencing strong population and economic growth—creating increasing demand for new housing development.**

