

# FOR LEASE

GREAT LOCATION

# Office Space

2575 Homeview Drive | Richmond, VA 23294



COMMONWEALTH  
COMMERCIAL  
Comprehensive Property Solutions



## PROPERTY HIGHLIGHTS

- › 4,353± SF endcap of office/showroom available immediately
- › 6 offices, 2 conference rooms, 2 restrooms, storage, and 16' ceilings
- › Abundant parking available
- › Building signage available
- › Move-in ready with recent upgrades including fresh paint, flooring, and carpet
- › Contact Agents for Pricing

DEMOGRAPHICS	1 MILE	3 MILE	5 MILE
TOTAL POPULATION	16,099	94,994	214,521
AVERAGE HH INCOME	\$96,726	\$119,335	\$148,996
DAYTIME EMPLOYEES	7,704	80,171	134,287

## FOR MORE INFORMATION:

### MADDIE STRIEFFLER

Sales & Leasing Associate

804-793-0050

[mstrieffler@commonwealthcommercial.com](mailto:mstrieffler@commonwealthcommercial.com)

### ERIC HAMMOND

Senior Vice President

804-793-0049

[ehammond@commonwealthcommercial.com](mailto:ehammond@commonwealthcommercial.com)

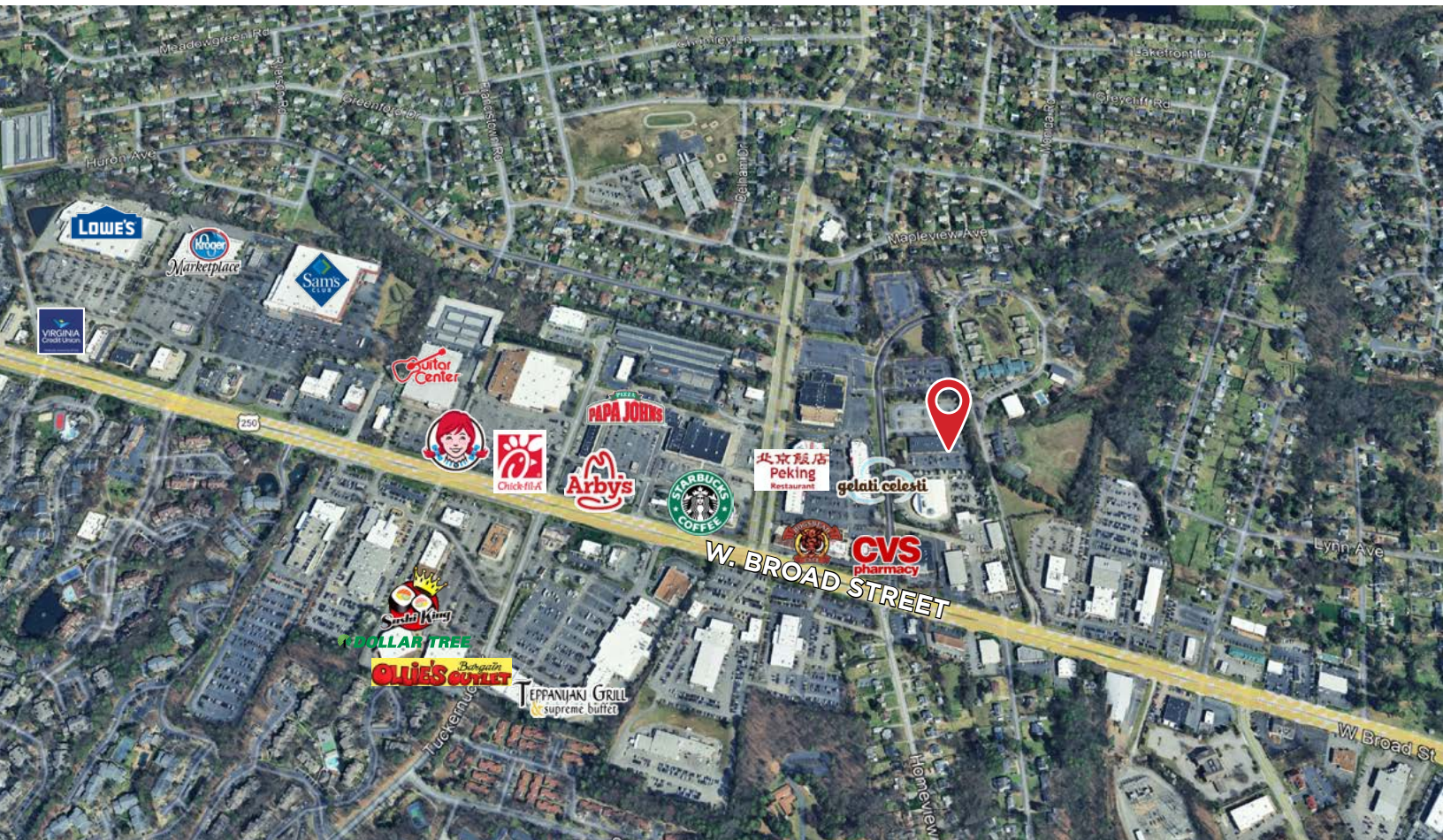
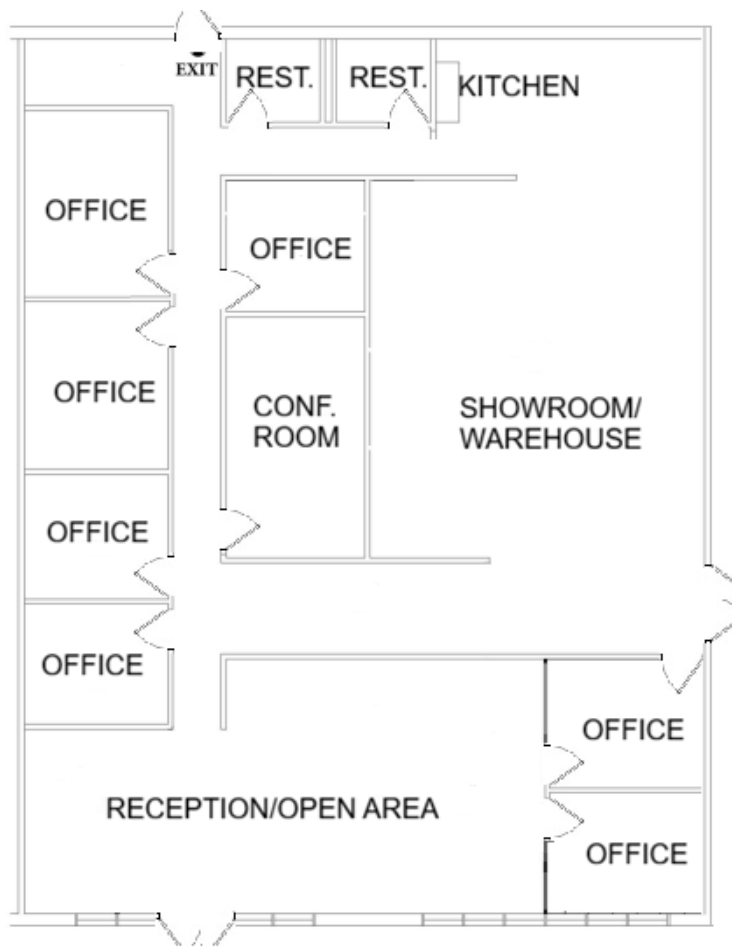
Commonwealth Commercial Partners, LLC represents the Landlord of this property. Information contained herein is deemed reliable but is not guaranteed.



FOR LEASE | 2575 HOMEVIEW DRIVE | RICHMOND, VA 23294

# FLOOR PLAN

4,353± SF ENDCAP SUITE



FOR LEASE | 2575 HOMEVIEW DRIVE | RICHMOND, VA 23294