

FOR LEASE

WEST END LOCATION

Provident Mutual Building

2008 Libbie Avenue | Henrico, VA 23226



COMMONWEALTH
COMMERCIAL
Comprehensive Property Solutions

FULL BUILDING AVAILABILITY!



PROPERTY HIGHLIGHTS

- › Three (3) story, 8,700± SF office building prominently located at the intersection of Broad Street and Libbie Avenue.
2,500± Ground floor
200 - 3,100± First floor *All 4 suites can be combined for 3,100 RSF
3,100± Second floor
- › Numerous nearby amenities at Willow Lawn including Cava, Starbucks, Chopt Salad Co, Panera Bread & many more!
- › Park at your front door
- › Landlord will lease individual offices
- › **LEASE RATE: \$19.50**

DEMOGRAPHICS	1 MILE	3 MILE	5 MILE
TOTAL POPULATION	9,756	86,607	254,837
AVERAGE HH INCOME	\$117,218	\$110,371	\$94,813
DAYTIME EMPLOYMENT	25,327	81,514	214,578

FOR MORE INFORMATION:

JAMIE GALANTI, CCIM, SIOR

Senior Vice President | Partner

804-433-1825

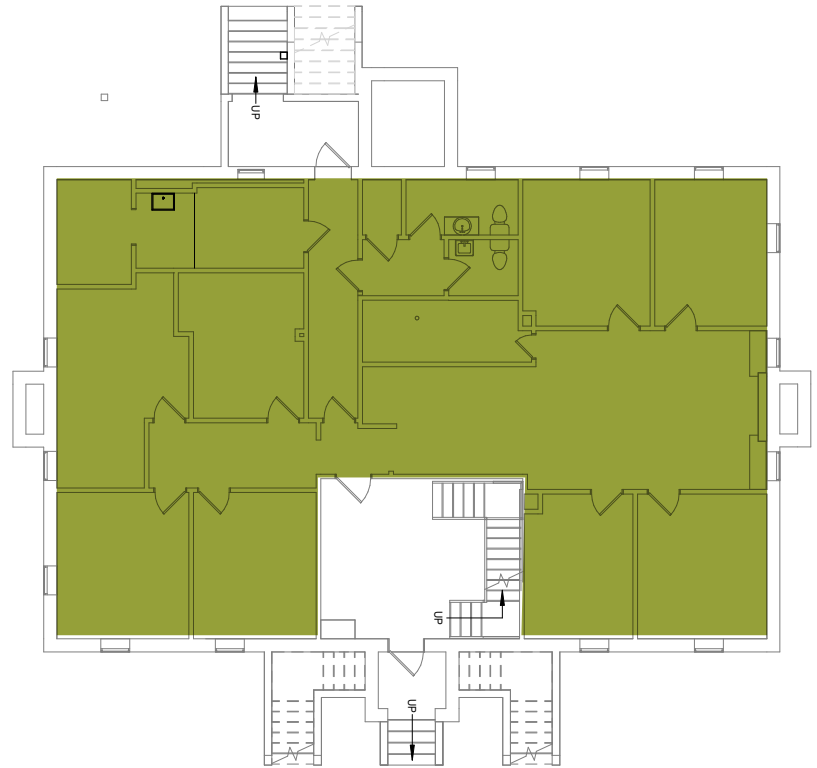
jgalanti@commonwealthcommercial.com

Commonwealth Commercial Partners, LLC represents the Landlord of this property. Information contained herein is deemed reliable but is not guaranteed.

FLOOR PLANS

GROUND FLOOR →

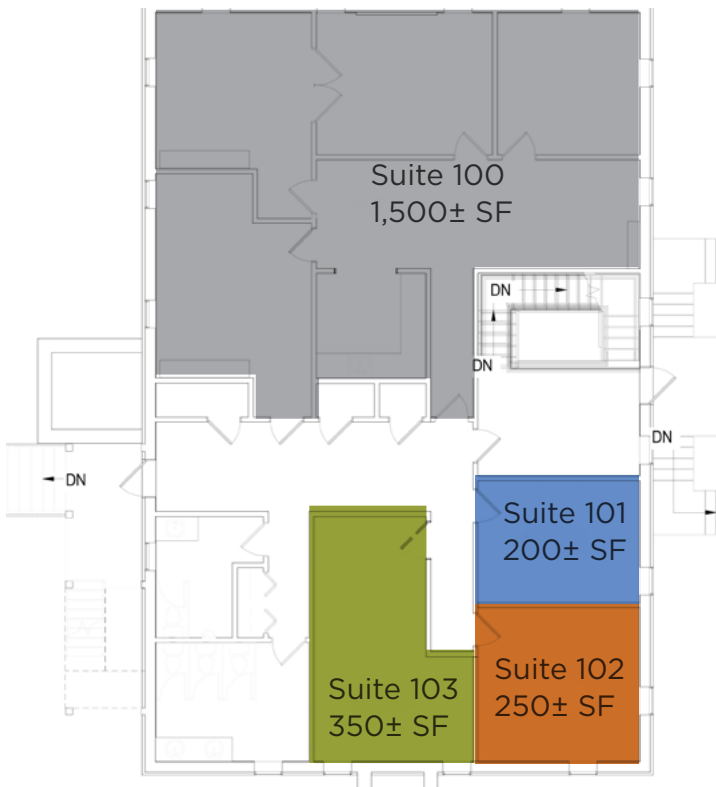
2,500± SF



FIRST FLOOR ↓

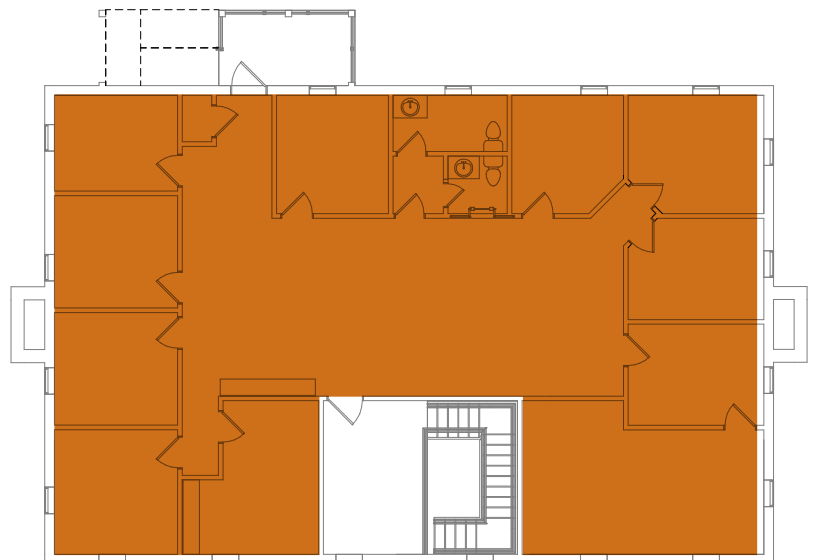
200 - 3,100± SF

*All 4 suites can be combined for 3,100 RSF




SECOND FLOOR →

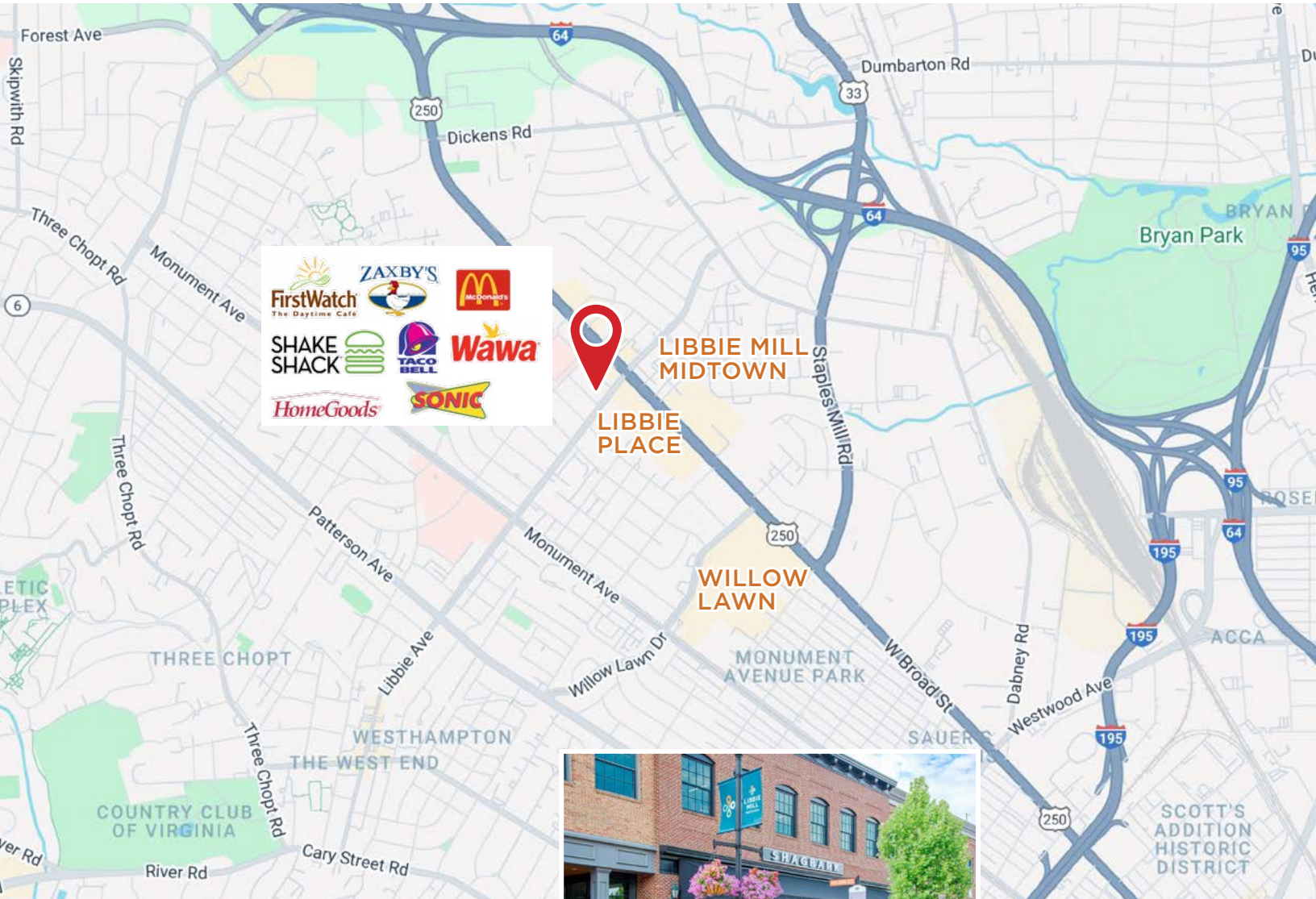
3,100± SF



THE SHOPS AT WILLOW LAWN

It offers a variety of retail and dining options, making it a popular destination for both locals and visitors.



3 Minutes
0.8 Miles



LIBBIE PLACE SHOPPING CENTER

The shopping center offers a variety of retail options and is known for its convenient location and accessibility.




2 Minutes
0.5 Miles

LIBBIE MILL MIDTOWN

located between Staples Mill Road and Libbie Avenue, just south of I-64.

