



FOR LEASE

Office Space – Sauer Center
2000 W Marshall Street | Richmond, VA 23220

SAUER

PROPERTIES



**COMMONWEALTH
COMMERCIAL**
Comprehensive Property Solutions

PROPERTY HIGHLIGHTS

- › **1,671± SF Class A Office Space - Now Available**
- › **Beautifully Appointed Interior:** Custom, high-end finishes
- › **Efficient Floor plan:** 7 private offices, Kitchenette, Conference Room, and Reception Area
- › **Outstanding Location:** At the heart of The Sauer Center Development, proximal to Broad Street, I-64, and I-95
- › **Ample Surface Lot Parking:** 4 spaces per 1,000 SF parking ratio
- › **Convenient Amenities Nearby:** Surrounded by popular destinations including Starbucks, Whole Foods, Lee's Chicken, and more!
- › **Lease Rate:** Contact agent for pricing

FOR MORE INFORMATION:

ROBBIE BERNDT

Senior Associate
804-968-1151
rberndt@commonwealthcommercial.com

TUCKER DOWDY, SIOR

Senior Vice President | Partner
804-228-4932
tdowdy@commonwealthcommercial.com

RUSSELL WYATT

Senior Vice President | Partner
804-221-4272
rwyatt@commonwealthcommercial.com

Commonwealth Commercial Partners, LLC represents the Landlord of this property.
Information contained herein is deemed reliable but is not guaranteed.

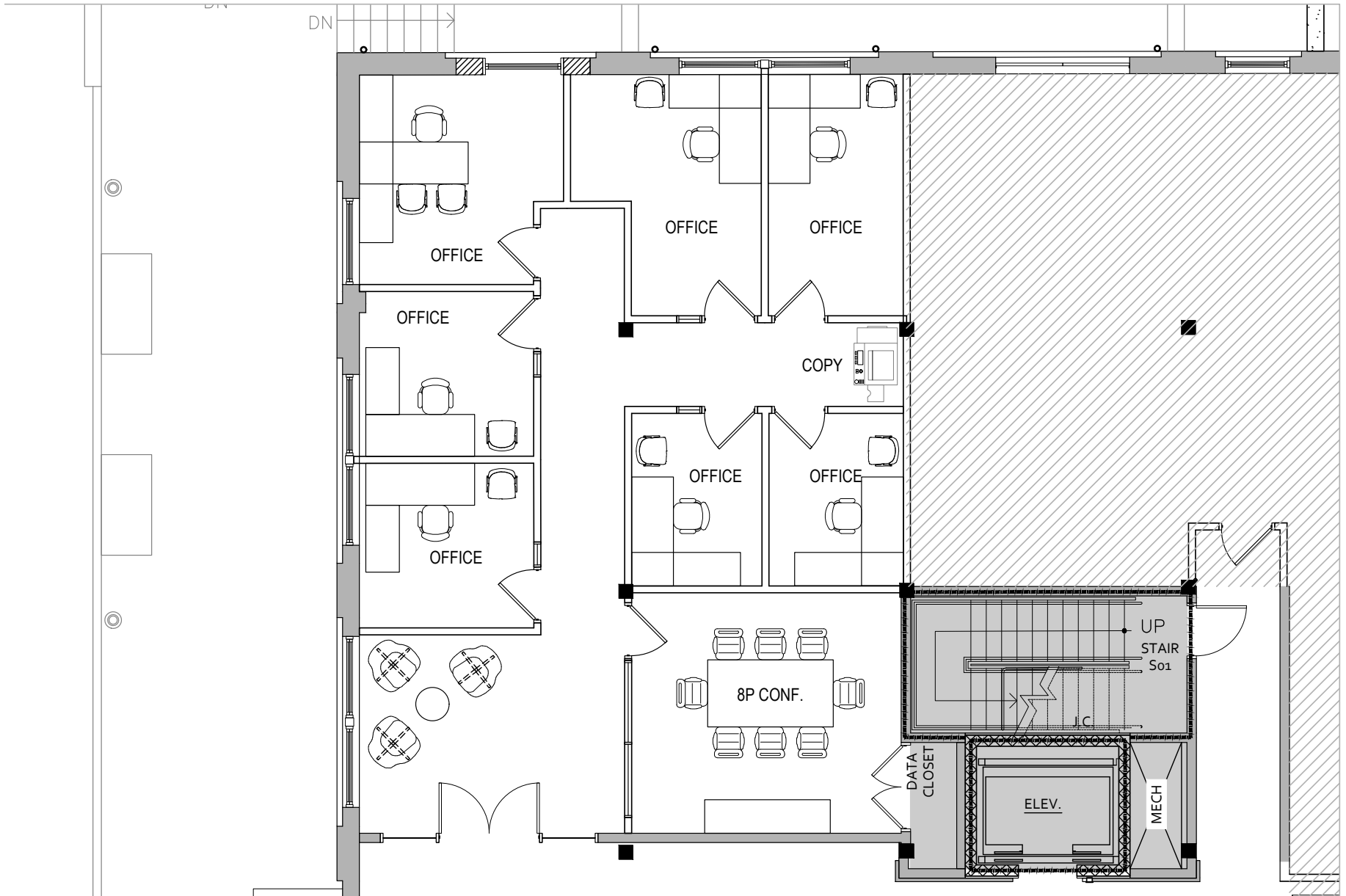




2000 W
MARSHALL
STREET

WHOLE FOODS MARKET

FLOOR PLAN



MARKET OVERVIEW

MIDTOWN IS THE PLACE TO BE

DIAMOND DISTRICT

Flying Squirrels new stadium and Diamond District phase one on track for 2026 opening. 67-acre site anchored by a new ballpark and mixed-use buildings.

SCOTT'S ADDITION

A mixed-use industrial neighborhood with over 10 breweries, restaurants, and meaderies, 2,000+ new residents, and numerous entertainment destinations.



VIRGINIA COMMONWEALTH UNIVERSITY ATHLETIC VILLAGE



40-acre athletic campus along Hermitage that will feature indoor and outdoor facilities for tennis, soccer, and track and field is planned. VCU plans to host USTA events at its tennis facility and open the amenities to community use.

