

# FOR LEASE

EXCELLENT LOCATION

## Office Space

1840 W. Broad Street | Richmond, VA 23220



COMMONWEALTH  
COMMERCIAL  
Comprehensive Property Solutions



### PROPERTY HIGHLIGHTS

- › 5,807± SF Office suite available!
- › Historic building located in the Sauer Center development
- › Creative office environment with open floor plan and mezzanine
- › Prime location fronting W. Broad Street at the corner of Hermitage Road
- › Free, surface lot parking available
- › Excellent walkability neighboring Whole Foods Market and Lee's Famous Chicken!

DEMOGRAPHICS	1 MILE	3 MILE	5 MILE
POPULATION	33,286	135,906	270,707
AVERAGE HH INCOME	\$88,361	\$98,322	\$97,392
DAYTIME EMPLOYEES	16,351	110,360	170,248

### FOR MORE INFORMATION:

#### ROBBIE BERNDT

Senior Associate

804-968-1151

[rberndt@commonwealthcommercial.com](mailto:rberndt@commonwealthcommercial.com)

#### TUCKER DOWDY, SIOR

Senior Vice President | Partner

804-228-4932

[tdowdy@commonwealthcommercial.com](mailto:tdowdy@commonwealthcommercial.com)

#### RUSSELL WYATT

Senior Vice President | Partner

804-433-1817

[rwatt@commonwealthcommercial.com](mailto:rwatt@commonwealthcommercial.com)

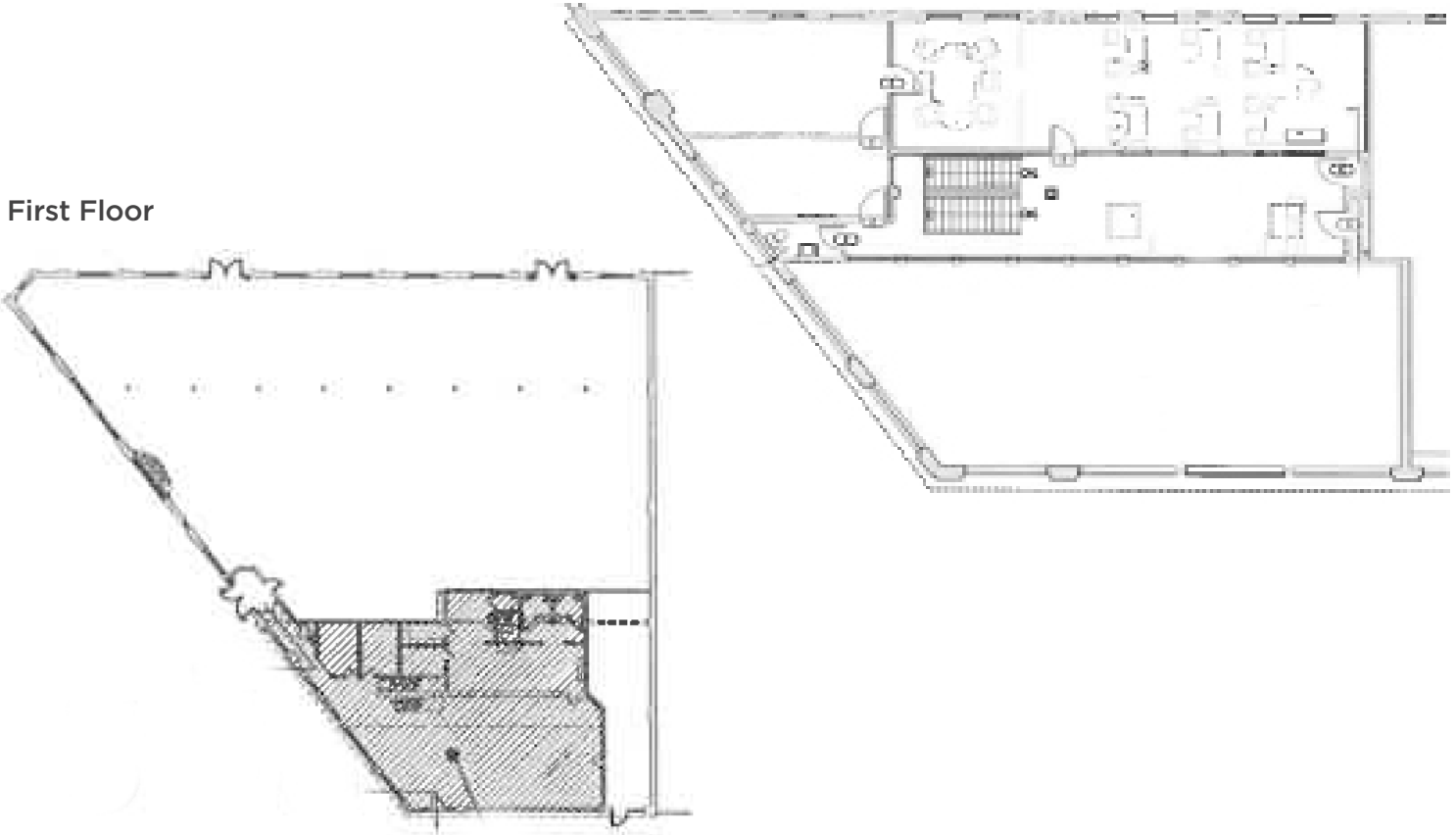
Commonwealth Commercial Partners, LLC represents the Landlord of this property. Information contained herein is deemed reliable but is not guaranteed.



FOR LEASE | 1840 W. BROAD STREET | RICHMOND, VA 23220

Second Floor/Mezzanine

First Floor



FOR LEASE | 1840 W. BROAD STREET | RICHMOND, VA 23220