

# FOR SALE

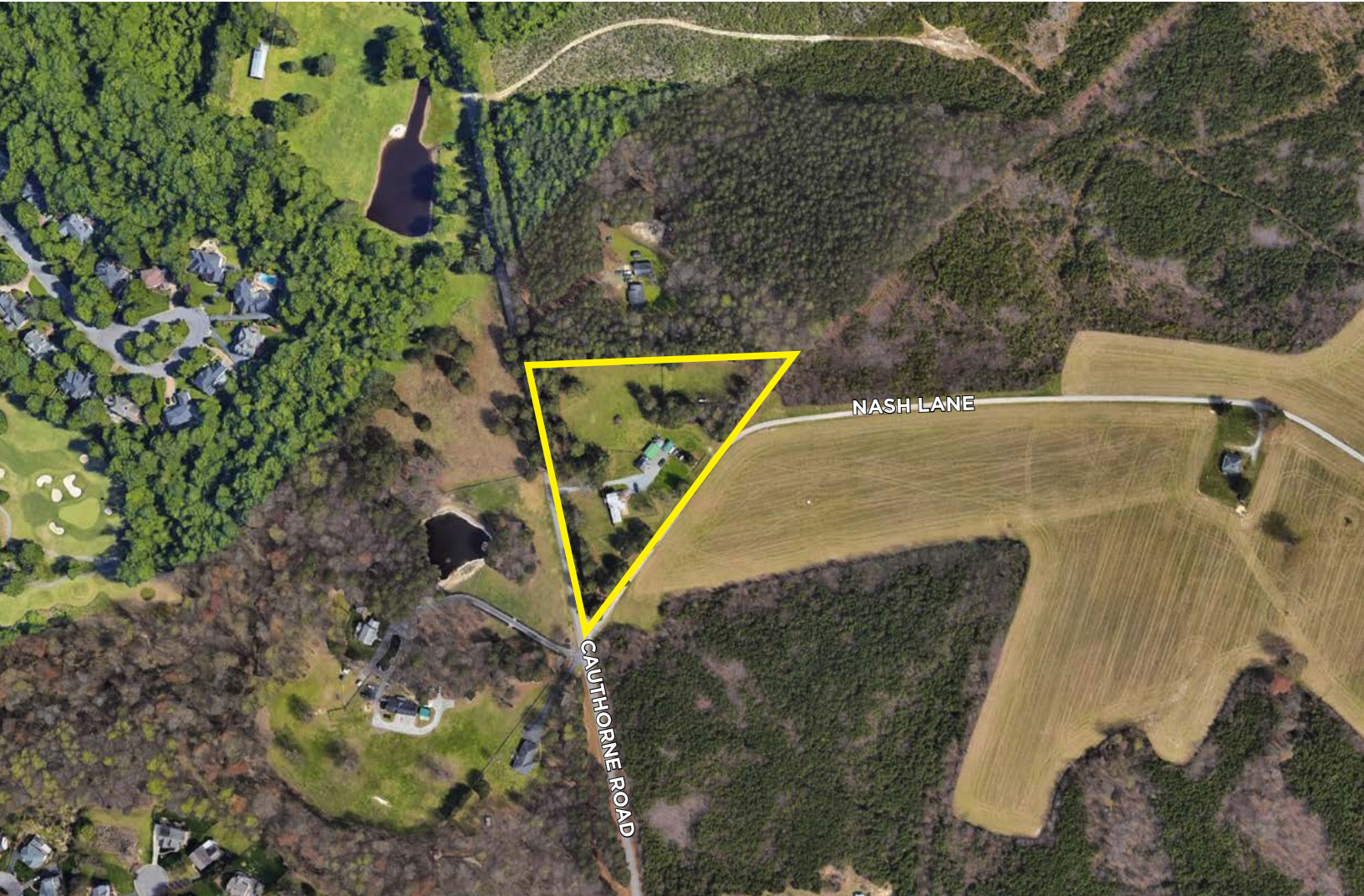
5.5 ACRES

## Urban Land

10458 Cauthorne Road | Glen Allen, VA 23059



COMMONWEALTH  
COMMERCIAL  
Comprehensive Property Solutions



### PROPERTY HIGHLIGHTS

- › 5.5± Acres for development
- › Zoned A-1
- › Near Wyndham, approximately 1 mile to Nuckols Road
- › Close to - Publix anchored SC, YMCA, Westshore and Grove Park office parks

DEMOGRAPHICS	1 MILE	3 MILE	5 MILE
POPULATION	4,502	31,842	92,441
AVERAGE HH INCOME	\$249,544	\$235,385	\$184,041
DAYTIME EMPLOYEES	2,944	24,317	58,361

### FOR MORE INFORMATION:

#### JOE BUHRMAN

Senior Vice President

804-433-1811

[jbuhrman@commonwealthcommercial.com](mailto:jbuhrman@commonwealthcommercial.com)

#### BILL BARNETT

Senior Vice President | Partner

804-433-1821

[bbarnett@commonwealthcommercial.com](mailto:bbarnett@commonwealthcommercial.com)

Commonwealth Commercial Partners, LLC represents the Owner of this property. Information contained herein is deemed reliable but is not guaranteed.



**SITE**

**NUCKOLS PLACE**

- tropical CAFE
- Rico's
- Publix
- CHIPOTLE
- SEDONA TAPROOM
- MOD PIZZA
- ZAXBY'S
- Starbucks COFFEE
- McDonald's
- SUBWAY

**BROOKHOLLOWS/C**

- Target
- THE HOME DEPOT
- HOBBY LOBBY
- BEST BUY
- WORLD MARKET
- KOHL'S
- QDOBA MEXICAN EATS
- McDonald's
- SONIC

**WEST BROAD STREET VILLAGE**

- GOLF GALAXY
- MONA
- BURGER BACH
- calico
- Phenix SALON & SPA
- gather.
- acac
- HomeGoods
- CARRABBA'S ITALIAN GRILL
- WHOLE FOODS MARKET
- D&B RESTAURANT
- chuy's
- KREI

**GREENGATE**

- LIDL
- Starbucks COFFEE
- McLero WUSHRO
- COAST
- RED SAL

**SHORTPUMP TOWNE CENTER**

- DICK'S SPORTING GOODS
- macys
- H&M
- Check it off
- POTTERY BARN
- LUSH FRESH HANDMADE COSMETICS
- urban outfitters
- J. CREW
- Firebirds
- Apple
- Michael Kors

FOR SALE | 10458 CAUTHORNE ROAD | GLEN ALLEN, VA 23059

# TOPOGRAPHY MAP

