

FOR SALE

**10300 Corporate Road
Petersburg, VA 23805**



COMMONWEALTH
COMMERCIAL REAL ESTATE SOLUTIONS



Property Features

- 5.73 acres
- 2,870± SF office building with covered pavilion
- M-1 zoning allowing for general manufacturing, assembly, warehousing, and various other uses
- Public water line onsite
- Close proximity to I-95 located off the Rives Road exit
- Sale Price: \$850,000

For More Information:

Brent Altaffer

Vice President

o: 804-793-0055

baltaffer@commonwealthcommercial.com

Jamie Galanti, CCIM, SIOR

Senior Vice President, Partner

o: 804-433-1825

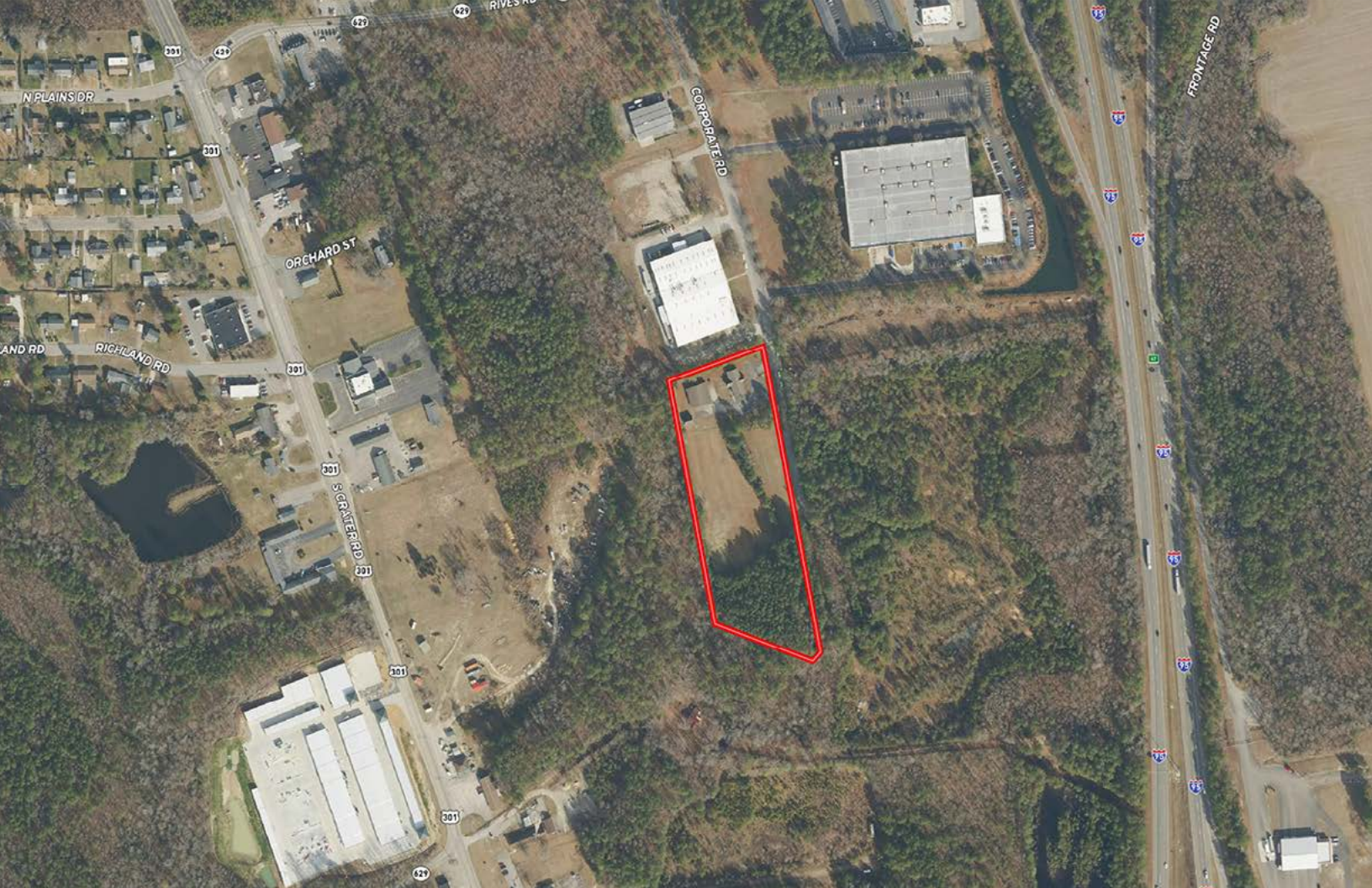
jgalanti@commonwealthcommercial.com

This document has been prepared for informational purposes only. All information contained herein has been obtained from sources believed to be reliable; however, no representation or warranty, express or implied, is made as to the accuracy or completeness of the information contained herein.

4198 Cox Road, Suite 200
Glen Allen, VA 23060

o: 804-346-4966

commonwealthcommercial.com







LEGO Manufacturing Facility



Live! Casino Virginia

