

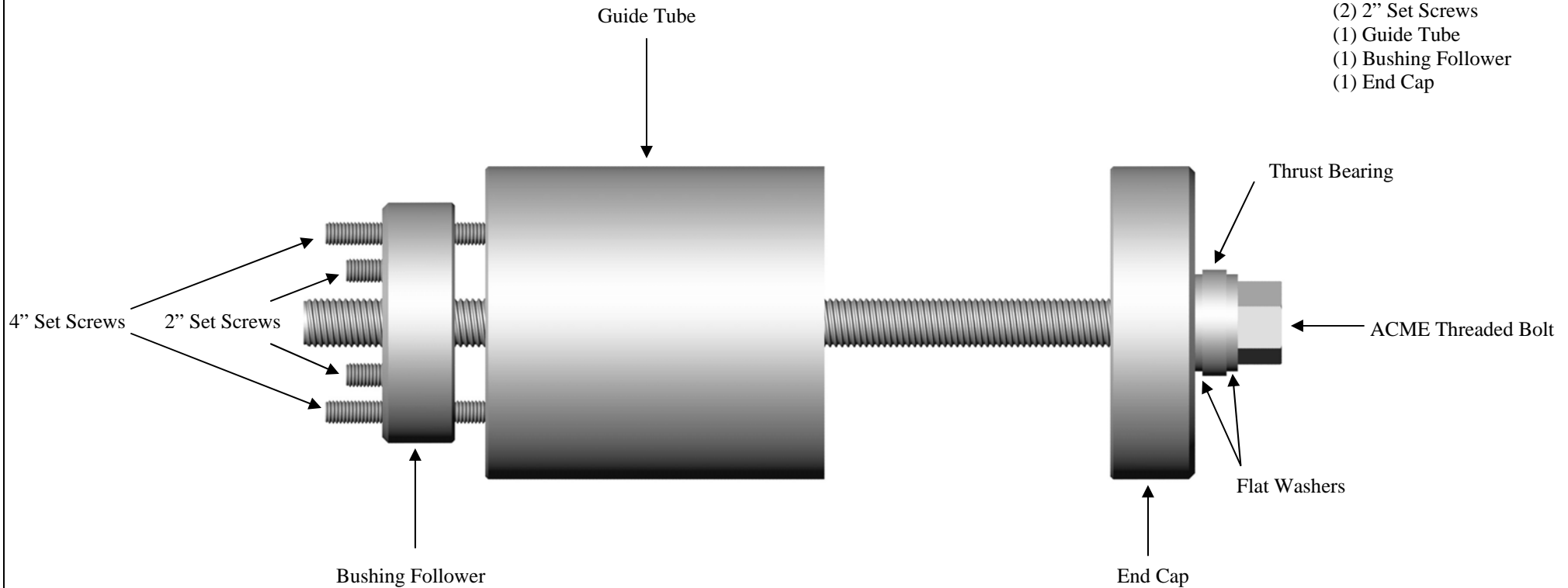


PT50-59307

INSTALLATION TOOL FOR THE PB50-36914 PIVOT BUSHING

Tool Includes:

- (1) ACME Threaded Bolt
- (1) Thrust Bearing
- (2) Flat Washers
- (2) 4" Set Screws
- (2) 2" Set Screws
- (1) Guide Tube
- (1) Bushing Follower
- (1) End Cap



Notes:

- Lubricate ACME threaded bolt and thrust bearing before each use
- ACME bolt requires a 1 5/8" socket