

# PRODUCT SPOTLIGHT

## ATRO PARTS

ENGINEERED | DURABLE | RELIABLE  
MANUFACTURED IN ST. CLAIR, MISSOURI | U.S.A.

## TWO-PIECE WELDABLE TORQUE RODS: Large Eye Rods

Two Piece Torque Rods allow you to maintain a limited inventory with maximum flexibility. Match the male and female rods for lengths up to 27". The ultimate in convenience.

### ROD FEATURES:

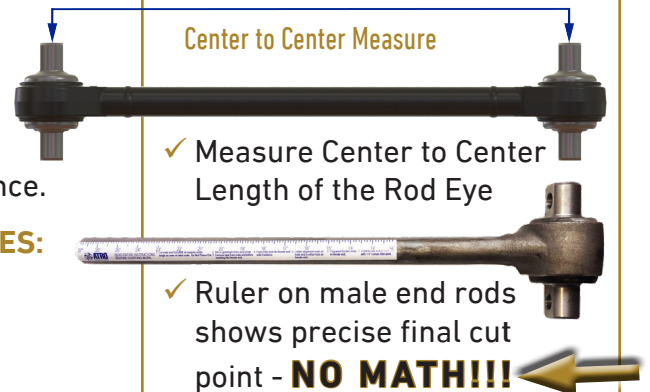
- Forged Rod Eyes
- Heavier Rod Bar
- 3 Year Warranty

### ROTATING BUSHING FEATURES:

- Chemically Resistant
- 3 Year Warranty

### BENEFITS:

- The free rotating bushing eliminates the clocking concerns.
- This results in the need for less inventory and makes installation easier and quicker.
- The bushing material last 2-5 times longer than rubber.



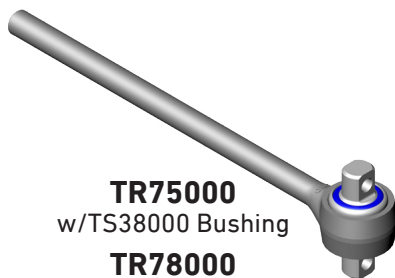
✓ Measure Center to Center Length of the Rod Eye

✓ Ruler on male end rods shows precise final cut point - **NO MATH!!!**

✓ Reduces mistakes and wasted inventory

✓ Only one weld

## Male End



**TR75000**

w/TS38000 Bushing

**TR78000**

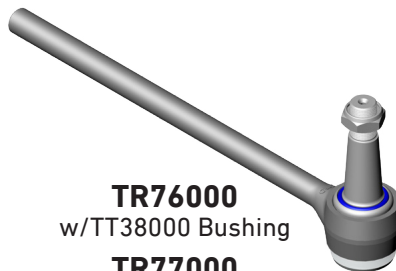
w/TS38750 Bushing

**TR79000**

w/TS38875 Bushing

**TR89000**

w/TS50-22649 Bushing



**TR76000**

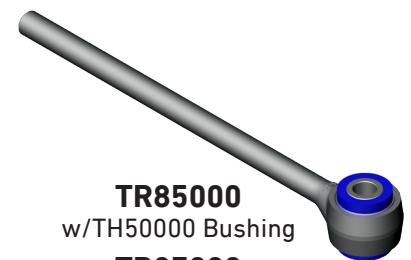
w/TT38000 Bushing

**TR77000**

w/TM38000 Bushing

**TR81000**

w/TT34038 Bushing



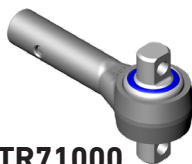
**TR85000**

w/TH50000 Bushing

**TR87000**

w/TH99-22101 Bushing

## Female End



**TR71000**

w/TS38000 Bushing

**TR74000**

w/TS38750 Bushing

**TR83000**

w/TS38875 Bushing

**TR88000**

w/TS50-22649 Bushing



**TR72000**

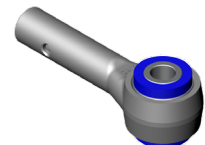
w/TT38000 Bushing

**TR73000**

w/TM38000 Bushing

**TR80000**

w/TT34038 Bushing



**TR84000**

w/TH50000 Bushing

**TR86000**

w/TH99-22101 Bushing

**- TWO PIECE LARGE EYE TORQUE ROD CHART ON REVERSE SIDE -**

PS002-060419

**ATROBUSHING.COM | 1.800.325.6114**

ATRO Engineered Systems, Inc. is not liable for any errors herein. All manufacturers' names and part numbers are used without permission; no endorsement, affiliation, or recommendation is implied. They are included for reference purposes only.

# PRODUCT SPOTLIGHT

**ATRO PARTS**  
ENGINEERED | DURABLE | RELIABLE  
MANUFACTURED IN ST. CLAIR, MISSOURI | U.S.A.

## TWO-PIECE TORQUE ROD CHART: Large Eye

### Straddle/Straddle

Female End				Male End			
PART #	BUSHING	A		PART #	BUSHING	B	
TR71000	TS38000	4 3/8" c-c	5/8" Bolt	TR75000	TS38000	4 3/8" c-c	5/8" Bolt
TR74000	TS38750	4 3/8" c-c	3/4" Bolt	TR78000	TS38750	4 3/8" c-c	3/4" Bolt
TR83000	TS38875	4 3/8" c-c	7/8" Bolt	TR79000	TS38875	4 3/8" c-c	7/8" Bolt
TR88000	TS50-22649	5 1/4" c-c	.91" Bolt	TR89000	TS50-22649	5 1/4" c-c	.91" Bolt



### Straddle/Taper Stud (Female Straddle)

Female End				Male End			
PART #	BUSHING	A		PART #	BUSHING	B	
TR71000	TS38000	4 3/8" c-c	5/8" Bolt	TR76000	TT38000	8"	
TR74000	TS38750	4 3/8" c-c	3/4" Bolt	TR77000	TM38000	7"	
TR83000	TS38875	4 3/8" c-c	7/8" Bolt	TR81000	TT34038	6 5/8"	
TR88000	TS50-22649	5 1/4" c-c	.91" Bolt				



### Straddle/Taper Stud (Female Taper Stud)

Female End				Male End			
PART #	BUSHING	A		PART #	BUSHING	B	
TR72000	TT38000	8"		TR75000	TS38000	4 3/8" c-c	5/8" Bolt
TR73000	TM38000	7"		TR78000	TS38750	4 3/8" c-c	3/4" Bolt
TR80000	TT34038	6 5/8"		TR79000	TS38875	4 3/8" c-c	7/8" Bolt
				TR89000	TS50-22649	5 1/4" c-c	.91" Bolt



### Taper Stud/Taper Stud

Female End				Male End			
PART #	BUSHING	A		PART #	BUSHING	B	
TR72000	TT38000	8"		TR76000	TT38000	8"	
TR73000	TM38000	7"		TR77000	TM38000	7"	
TR80000	TT34038	6 5/8"		TR81000	TT34038	6 5/8"	



### Straddle/Hollow

Female End				Male End			
PART #	BUSHING	A		PART #	BUSHING	HOLE ID	
TR71000	TS38000	4 3/8" c-c	5/8" Bolt	TR85000	TH50000	1 1/8"	
TR74000	TS38750	4 3/8" c-c	3/4" Bolt	TR87000	TH99-22101	7/8"	
TR83000	TS38875	4 3/8" c-c	7/8" Bolt				
TR88000	TS50-22649	5 1/4" c-c	.91" Bolt				



### Hollow/Hollow

Female End				Male End			
PART #	BUSHING	Hole ID		PART #	BUSHING	HOLE ID	
TR84000	TH50000	1 1/8"		TR85000	TH50000	1 1/8"	
TR86000	TH99-22101	7/8"		TR87000	TH99-22101	7/8"	



**ATRO**  
ENGINEERED SYSTEMS

POLYURETHANE PARTS | SOLUTIONS FOR HEAVY TRUCKS

ATROBUSHING.COM  
©2019 ATRO ENGINEERED SYSTEMS, INC.

6 Bolte Lane  
St. Clair, Missouri 63077 | U.S.A.  
(800) 325.6114 | Fax (866) 920.2005