

PRODUCT SPOTLIGHT

ATRO PARTS

ENGINEERED | DURABLE | RELIABLE
MANUFACTURED IN ST. CLAIR, MISSOURI | U.S.A.

TWO-PIECE WELDABLE TORQUE RODS: Small Eye Rods

Two Piece Torque Rods allow you to maintain a limited inventory with maximum flexibility. Match the male and female rods for lengths up to 27". The ultimate in convenience.

ROD FEATURES:

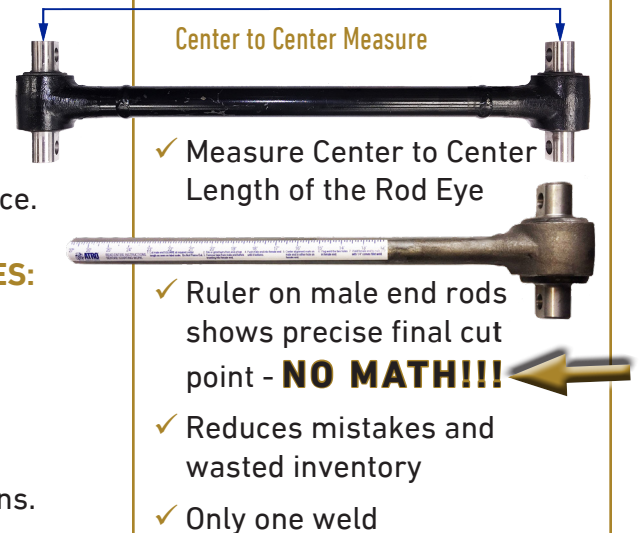
- Forged Rod Eyes
- Heavier Rod Bar
- 2 Year Warranty

ROTATING BUSHING FEATURES:

- Chemically Resistant
- 2 Year Warranty

BENEFITS:

- The free rotating bushing eliminates the clocking concerns.
- This results in the need for less inventory and makes installation easier and quicker.
- The bushing material last 2-5 times longer than rubber.



Male End



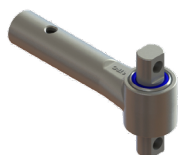
TR35120
w/TS50-22575 Bushing



TR35125
w/TT50-22501 Bushing



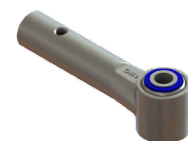
Female End



TR35220
w/TS50-22575 Bushing



TR35225
w/TT50-22501 Bushing



- TWO PIECE SMALL EYE TORQUE ROD CHART ON REVERSE SIDE -

PS001-060319

ATROBUSHING.COM | 1.800.325.6114

ATRO Engineered Systems, Inc. is not liable for any errors herein. All manufacturers' names and part numbers are used without permission; no endorsement, affiliation, or recommendation is implied. They are included for reference purposes only.

PRODUCT SPOTLIGHT

ATRO PARTS
ENGINEERED | DURABLE | RELIABLE
MANUFACTURED IN ST. CLAIR, MISSOURI | U.S.A.

TWO-PIECE TORQUE ROD CHART: Small Eye

Straddle/Straddle

Female End				Male End			
PART #	BUSHING	A		PART #	BUSHING	B	
TR35205	TS00-22500	4 3/8" c-c	5/8" Bolt	TR35105	TS00-22500	4 3/8" c-c	5/8" Bolt
TR35220	TS50-22575	4 3/8" c-c	3/4" Bolt	TR35120	TS50-22575	4 3/8" c-c	3/4" Bolt



Straddle/Taper Stud (Female Straddle)

Female End				Male End			
PART #	BUSHING	A		PART #	BUSHING	B	
TR35205	TS00-22500	4 3/8" c-c	5/8" Bolt	TR35110	TT50-22500	8"	
TR35220	TS50-22575	4 3/8" c-c	3/4" Bolt	TR35125	TT50-22501	6 5/8"	



Straddle/Taper Stud (Female Taper Stud)

Female End				Male End			
PART #	BUSHING	A		PART #	BUSHING	B	
TR35210	TT50-22500	8"		TR35105	TS00-22500	4 3/8" c-c	5/8" Bolt
TR35225	TT50-22501	6 5/8"		TR35120	TS50-22575	4 3/8" c-c	3/4" Bolt



Taper Stud/Taper Stud

Female End				Male End			
PART #	BUSHING	A		PART #	BUSHING	B	
TR35210	TT50-22500	8"		TR35110	TT50-22500	8"	
TR35225	TT50-22501	6 5/8"		TR35125	TT50-22501	6 5/8"	



Straddle/Hollow

Female End				Male End			
PART #	BUSHING	A		PART #	BUSHING	HOLE ID	
TR35205	TS00-22500	4 3/8" c-c	5/8" Bolt	TR35115	TH00-22500	7/8"	
TR35220	TS50-22575	4 3/8" c-c	3/4" Bolt				



Hollow/Hollow

Female End				Male End			
PART #	BUSHING	Hole ID		PART #	BUSHING	HOLE ID	
TR35215	TH00-22500	7/8"		TR35115	TH00-22500	7/8"	



ATRO
ENGINEERED SYSTEMS

POLYURETHANE PARTS | SOLUTIONS FOR HEAVY TRUCKS

ATROBUSHING.COM
©2019 ATRO ENGINEERED SYSTEMS, INC.

6 Bolte Lane
St. Clair, Missouri 63077 | U.S.A.
(800) 325.6114 | Fax (866) 920.2005