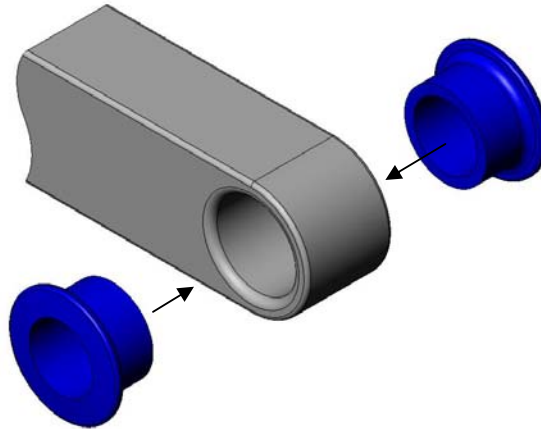


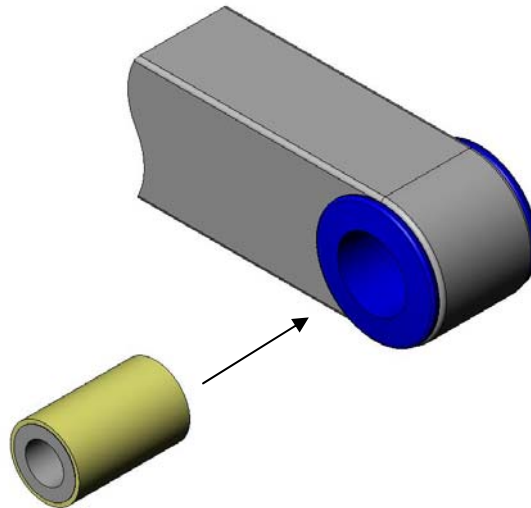
# PB50-26648 Installation

**1.) Install two halves of polyurethane bushing into beam as shown below.**



**2.) Install inner sleeve/low friction sleeve assembly into polyurethane bushing as an entire unit. This can be done in two ways:**

- using a press in conjunction with a flat plate to press both sleeves in at once
- using a long 1" or 1 1/8" bolt & nut with two large flat washers (or plates with a bolt hole through them) to draw both sleeves in at once



**3.) Re-install beam according to OEM procedures and guidelines.**