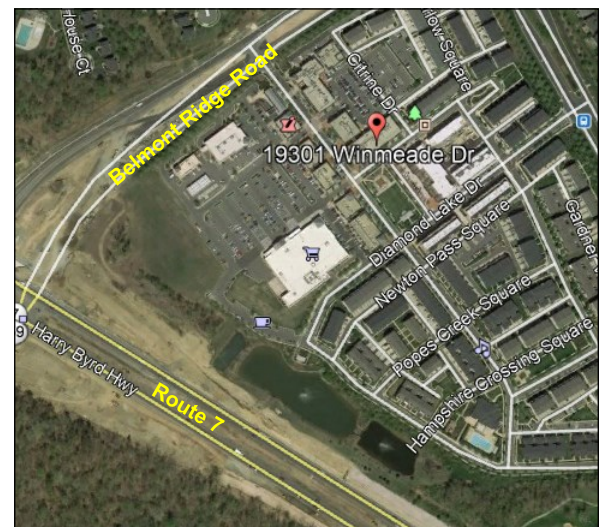


## LANDSDOWNE TOWN CENTER OFFICE SUITE FOR LEASE

*19301 WINMEADE DRIVE, SUITE 250, LEESBURG, VA 20176*



- 2,580 SF SECOND FLOOR OFFICE SUITE
- \$28.50 FULL SERVICE
- ELEVATOR ACCESS TO SECOND FLOOR
- ADJACENT TO 150,000 SF RETAIL INCLUDING HARRIS TEETER, CAPITAL ONE BANK, CVS, SHELL GAS, CHICK-FIL-A, STARBUCKS, AND ALONG WITH OTHER AMENITIES.
- CONVENIENT LOCATION WITH EASY ACCESS TO MAJOR ROADS.



JOHN LENCH, CCIM  
JLENCH@CGR-INC.COM  
202-716-0155

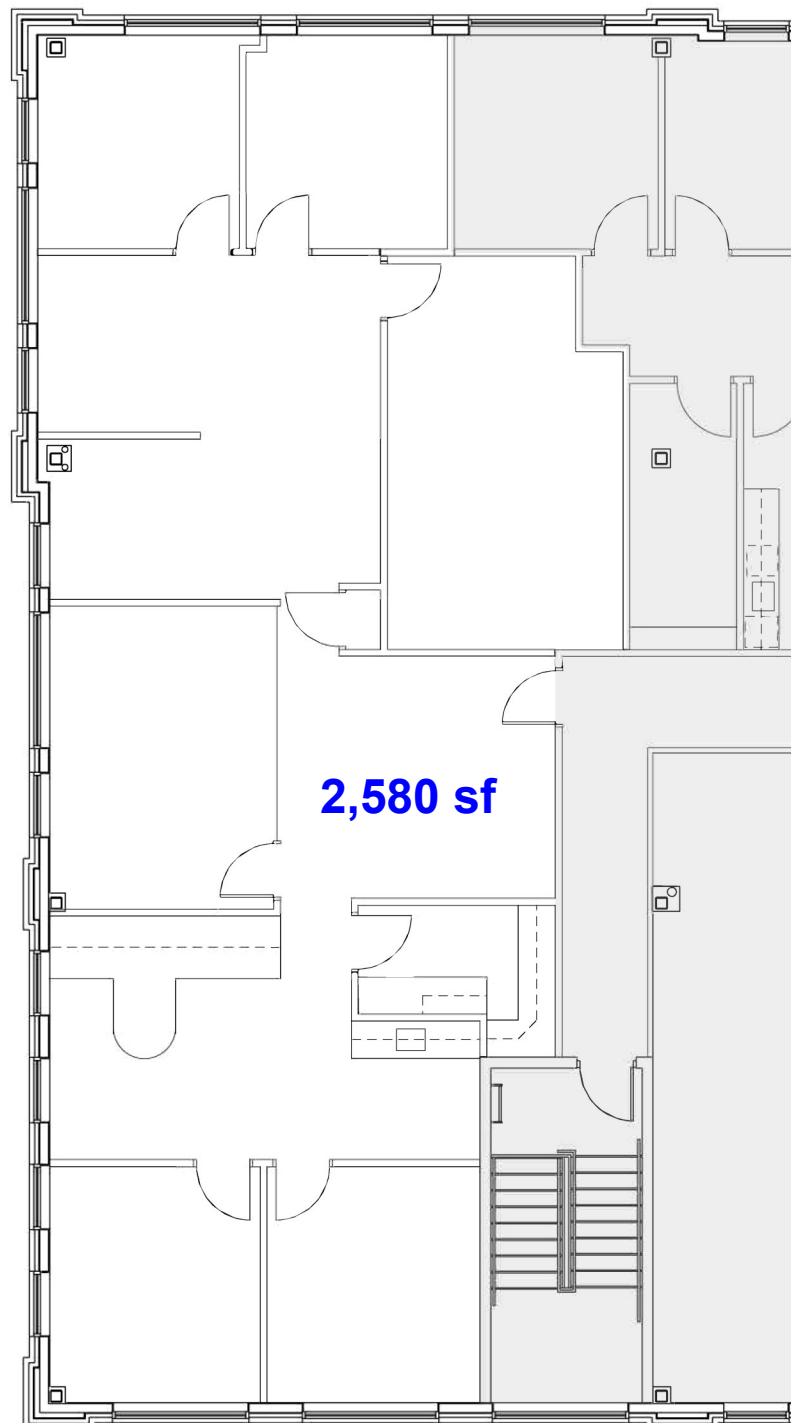
THOMAS HERTEL  
THERTEL@CGR-INC.COM  
703-544-1013 · EXT 118

Exclusive Listing By:

**CGR**  
COMMERCIAL GROUP REALTY  
[www.cgr-inc.com](http://www.cgr-inc.com)

## LANDSDOWNE TOWN CENTER OFFICE SUITE FOR LEASE

*19301 WINMEADE DRIVE, SUITE 250, LEESBURG, VA*



# Saul Centers

