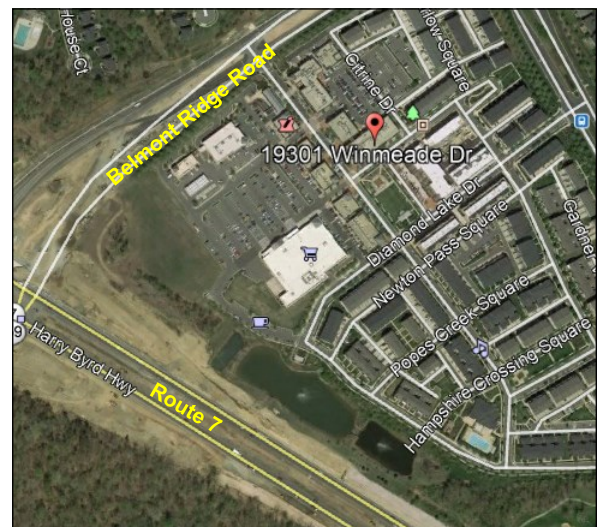


LANDSDOWNE TOWN CENTER OFFICE SUITE FOR LEASE

19301 WINMEADE DRIVE, SUITE 212, LEESBURG, VA 20176



- 2,018 SF SECOND FLOOR OFFICE SUITE
- \$28.50 FULL SERVICE
- SPACE CAN BE DEMISED TO 966 SF SUITE & 1,046 SF SUITE
- ELEVATOR ACCESS TO SECOND FLOOR
- ADJACENT TO 150,000 SF RETAIL INCLUDING HARRIS TEETER, CAPITAL ONE BANK, CVS, SHELL GAS, CHICK-FIL-A, STARBUCKS, AND ALONG WITH OTHER AMENITIES.
- CONVENIENT LOCATION WITH EASY ACCESS TO MAJOR ROADS.



JOHN LENCH, CCIM
JLENCH@CGR-INC.COM
202-716-0155

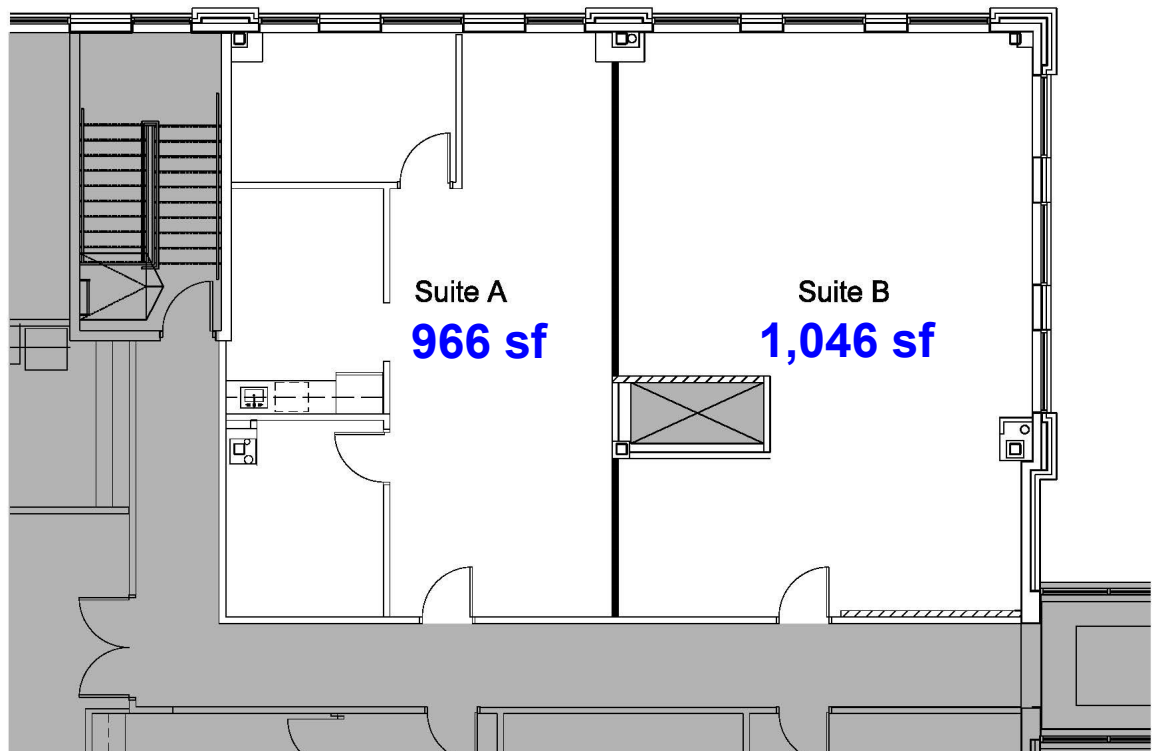
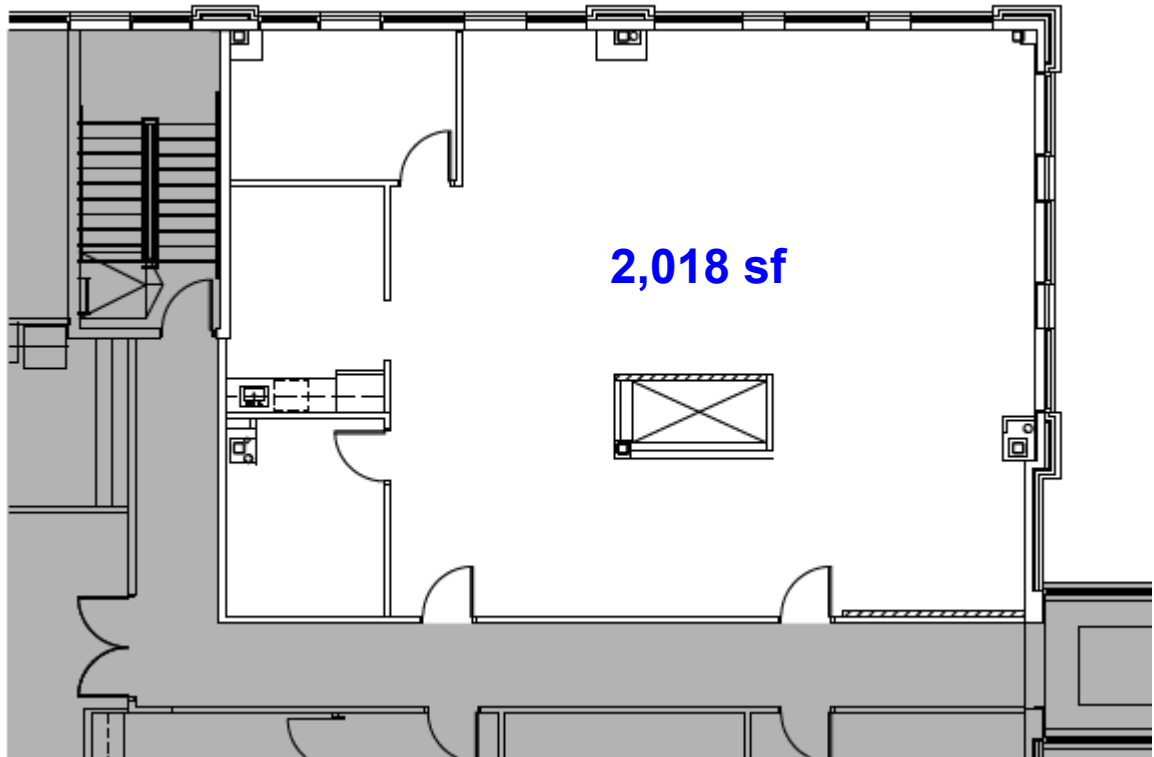
THOMAS HERTEL
THERTEL@CGR-INC.COM
703-544-1013 · EXT 118

Exclusive Listing By:

CGR
COMMERCIAL GROUP REALTY
www.cgr-inc.com

LANDSDOWNE TOWN CENTER OFFICE SUITE FOR LEASE

19301 WINMEADE DRIVE, SUITE 212, LEESBURG, VA



LANSDOWNE TOWN CENTER | SITE PLAN

Saul Centers

