

# LANDSDOWNE TOWN CENTER

## OFFICE SUITES FOR LEASE

*19301 WINMEADE DRIVE, LEESBURG, VA 20176*



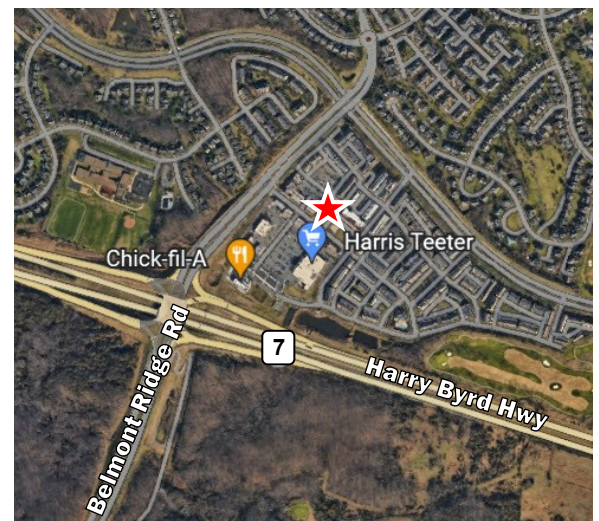
**AVAILABLE: 2ND FLOOR OFFICE SUITES WITH ELEVATOR ACCESS**

- SUITE 202 - 3,535 SF (AVAILABLE 2/1/23)
- SUITE 212 - 1,042 SF
- SUITE 250 - 2,580 SF

**RATE: \$28.50 FULL SERVICE**

**LANDSDOWNE TOWN CENTER**

- ELEVATOR ACCESS TO SECOND FLOOR
- GREAT WALKABLE AMENITY BASE & ADJACENT TO 200,000 SF RETAIL INCLUDING HARRIS TEETER, CAPITAL ONE BANK, CVS, SHELL GAS, CHICK-FIL-A, STARBUCKS, AND ALONG WITH OTHER AMENITIES
- CONVENIENT LOCATION WITH EASY ACCESS TO MAJOR ROADS



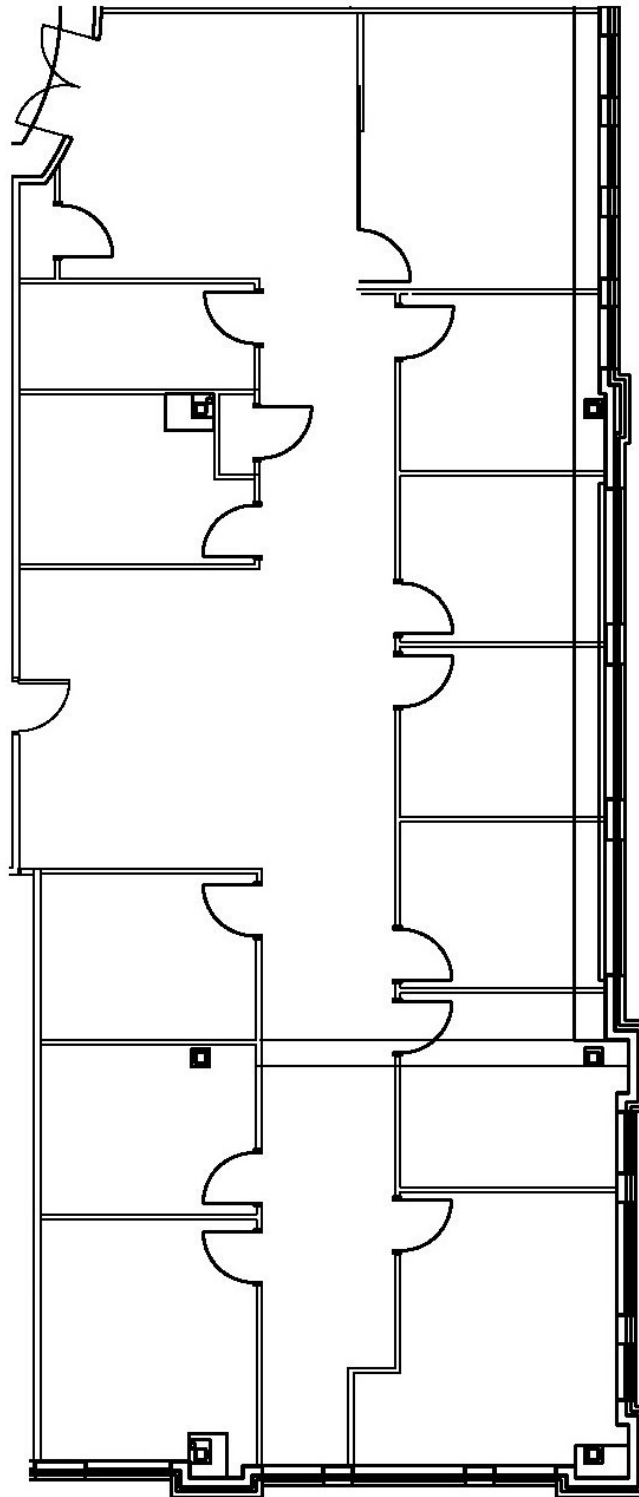
**JOHN LENCH, CCIM**  
JLENCH@CGR-INC.COM  
202-716-0155

**THOMAS HERTEL**  
THERTEL@CGR-INC.COM  
703-544-1013 · EXT 118

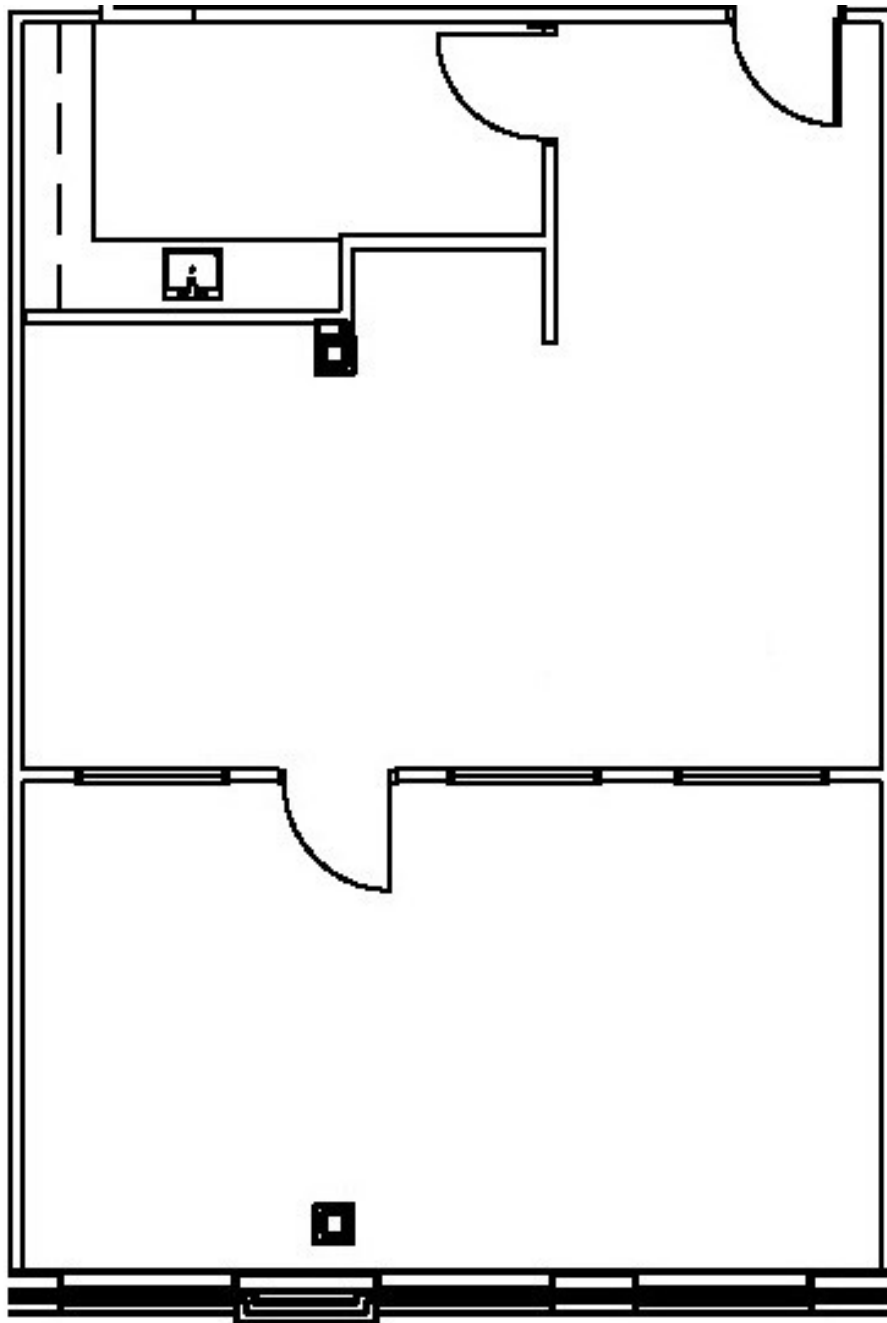
*Exclusive Listing By:*

**CGR**  
COMMERCIAL GROUP REALTY  
[www.cgr-inc.com](http://www.cgr-inc.com)

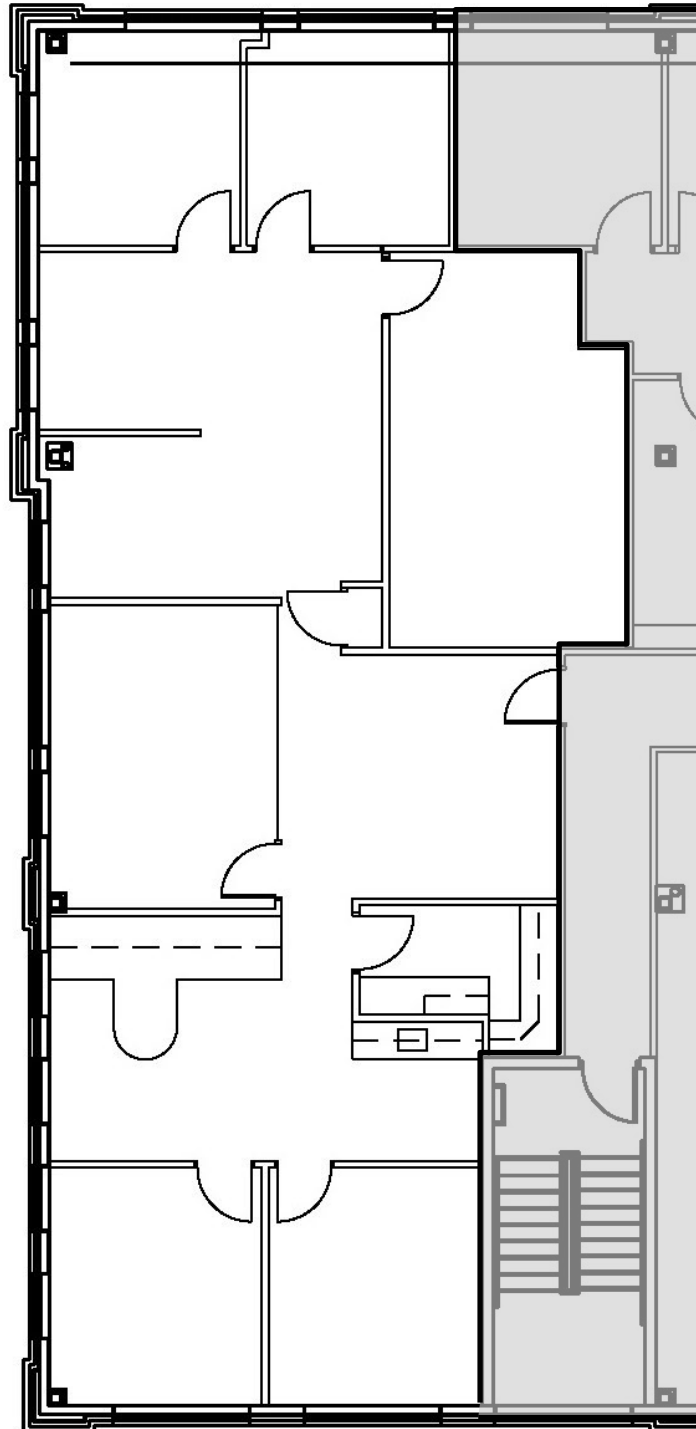
## FLOOR PLAN SUITE 202 – 3,535 RSF



## FLOOR PLAN SUITE 212 – 1,042 RSF



## FLOOR PLAN SUITE 250 – 2,580 RSF



## LANDS DOWNTOWN CENTER | SITE PLAN

