

# LEASE - 1 ACRE WITH OFFICE, WAREHOUSE, STORAGE YARD

105 DOUGLAS COURT | STERLING | VA | 20166



## FULL PROPERTY

AVAILABLE 1ST QTR 2020

12,000 SF OF OFFICE WAREHOUSE AND OUTSIDE STORAGE YARD  
\$22,000 PER MONTH PLUS UTILITIES

## OR AVAILABLE IMMEDIATELY

3,000 SF WAREHOUSE BAY \$3,500 PER MONTH PLUS UTILITIES  
1,000 SF WAREHOUSE BAY \$1,600 PER MONTH PLUS UTILITIES  
1,000 SF WAREHOUSE BAY \$1,500 PER MONTH PLUS UTILITIES

## PDGI USES INCLUDE:

VEHICLE REPAIR, EQUIPMENT RENTAL, CONTRACTOR OFFICE AND  
WAREHOUSE WITH YARD

Exclusive Listing By:



# 703-544-1013

DAVID AUSTIN, CCIM EXT 114  
AUSTIN@CGR-INC.COM  
DAVE GUNTER, CCIM EXT 111  
DEG@CGR-INC.COM

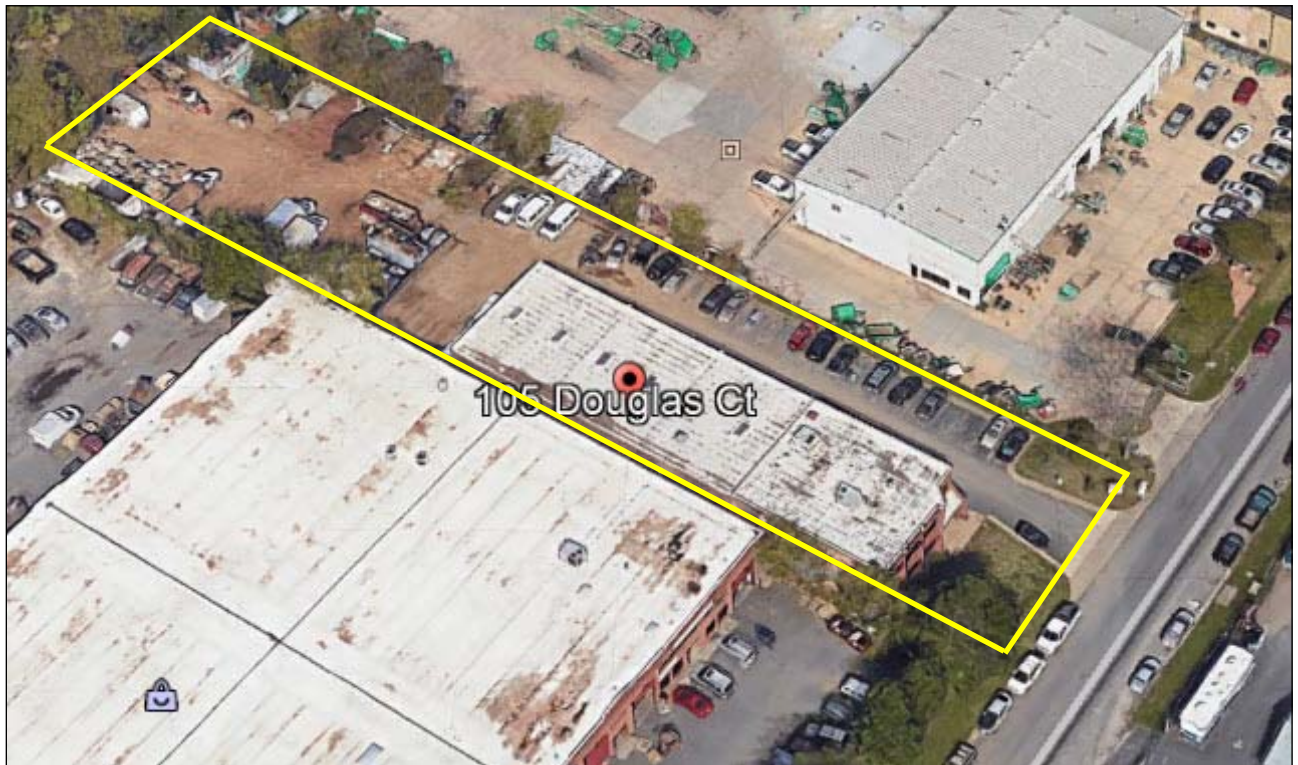


**Commercial Group Realty, Inc.**

43671 Trade Center Place  
Suite 106  
Dulles, Virginia 20166

[www.cgr-inc.com](http://www.cgr-inc.com)

105 DOUGLAS COURT | STERLING | VA | 20166



**703-544-1013**

DAVID AUSTIN, CCIM EXT 114  
AUSTIN@CGR-INC.COM



DAVE GUNTER, CCIM EXT 111  
DEG@CGR-INC.COM