

# SALE

## APPROVED LANDSCAPE SERVICE SITE

20102 BELMONT RIDGE RD | ASHBURN | VA | 20147



- SALE PRICE \$675,000
- SITE: APPROXIMATELY 43,298 SF
- ZONED PGDI
- USE: CONTRACTOR SERVICE ESTABLISHMENT LAWN AND LANDSCAPE SERVICE.
- UTILITIES: OFF SITE

Exclusive Listing By:

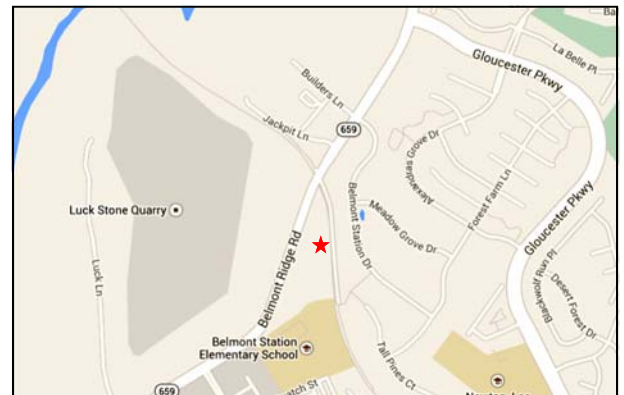


DAVID GUNTER, CCIM EXT 111

DEG@CGR-INC.COM

DAVID AUSTIN, CCIM EXT 114

AUSTIN@CGR-INC.COM



FRONTS BELMONT RIDGE RD WITH EASY ACCESS TO  
ROUTE 7 AND DULLES GREENWAY

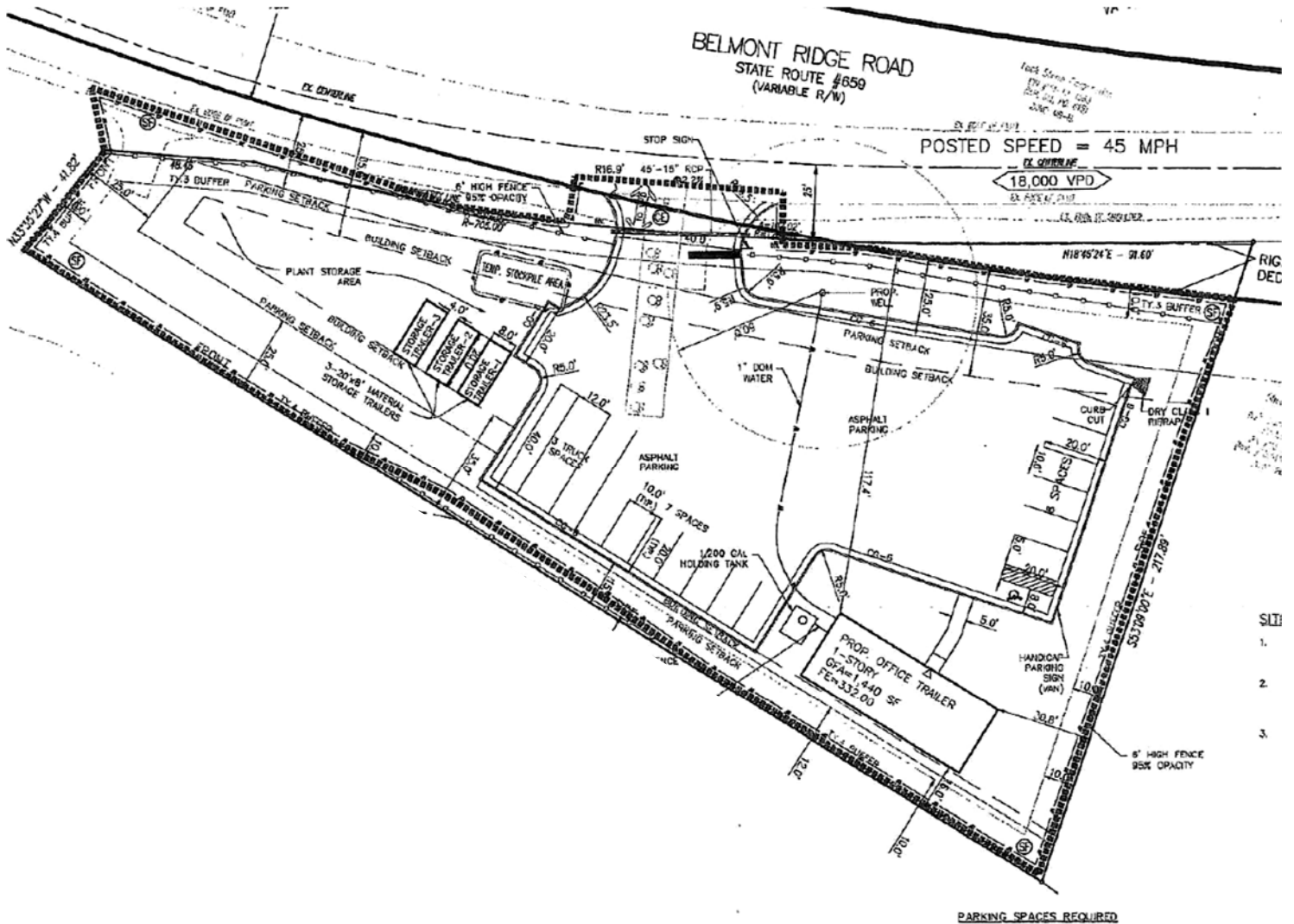
[www.cgr-inc.com](http://www.cgr-inc.com)

43671 Trade Center Place, Suite 106  
Dulles, Virginia 20166



**703-544-1013**

# Site Plan

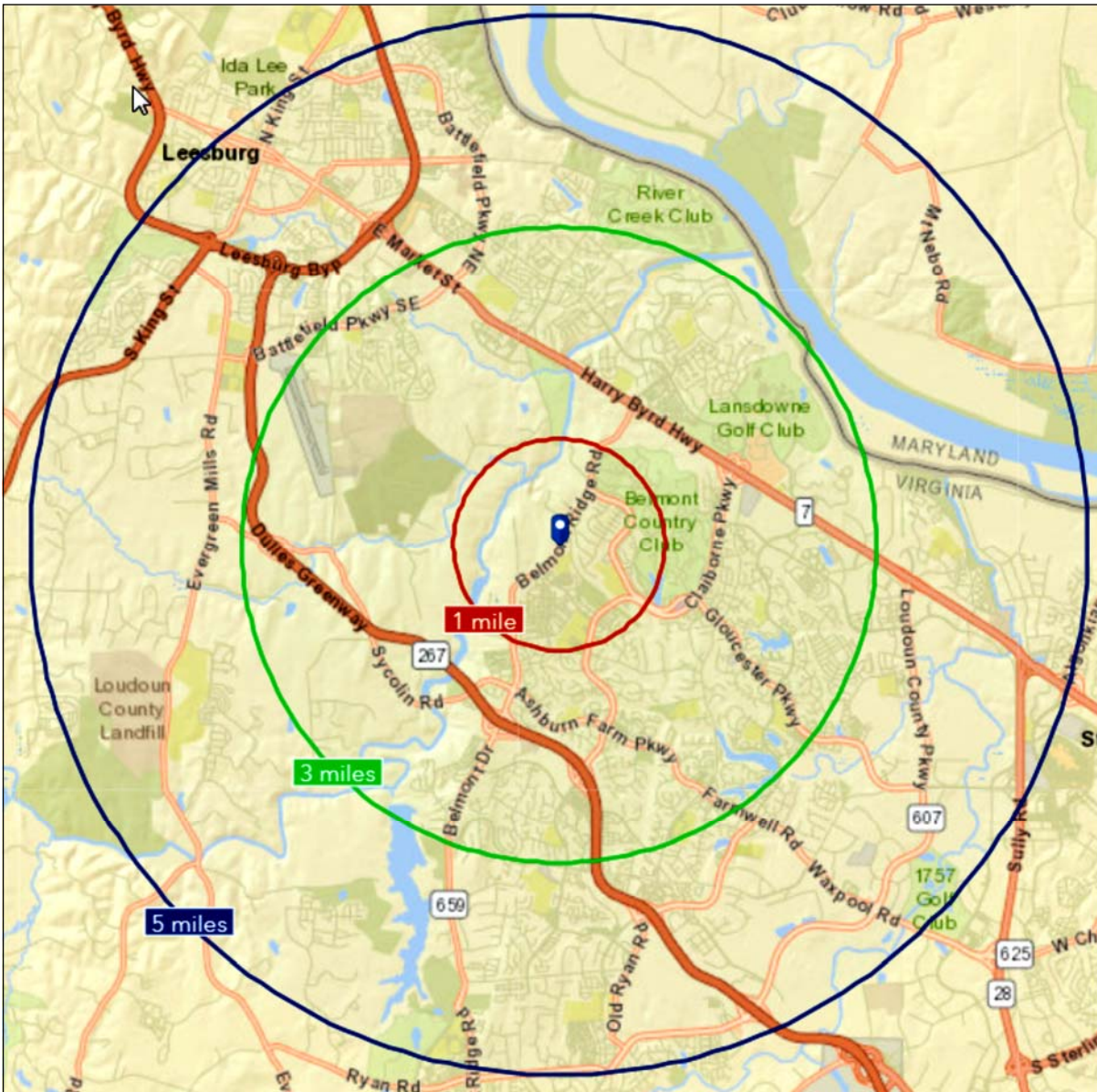


DAVID GUNTER, CCIM EXT 111  
 DEG@CGR-INC.COM  
 DAVID AUSTIN, CCIM EXT 114  
 AUSTIN@CGR-INC.COM



**703-544-1013**





DEMOGRAPHICS	1 MILE	3 MILES	5 MILES
POPULATION	7,288	80,903	167,424
MEDIAN INCOME	\$169,794	\$152,676	\$133,295

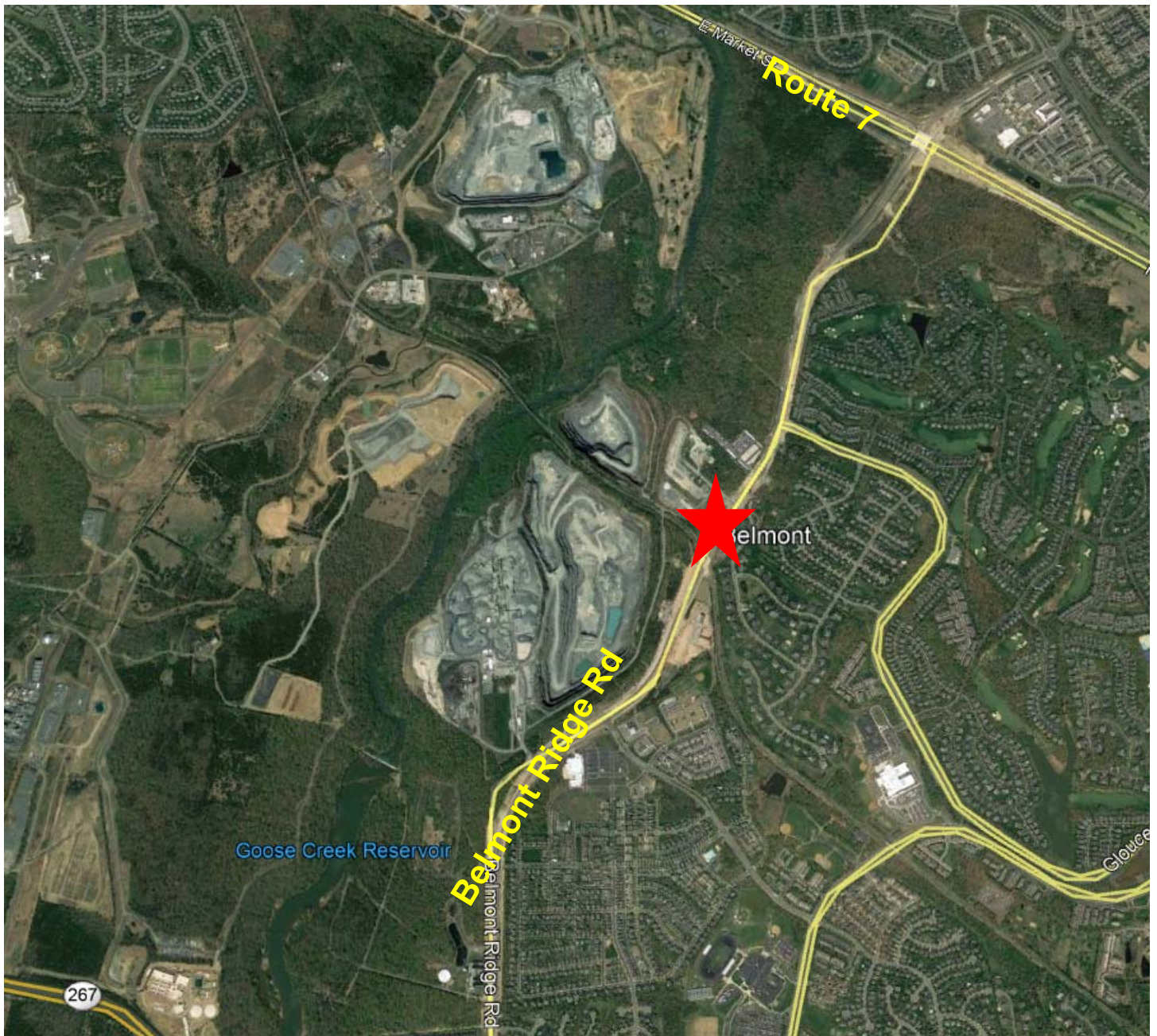
STREET	VDOT TRAFFIC COUNT 2018
BELMOND RIDGE ROAD	18,000 ADT

DAVID GUNTER, CCIM EXT 111  
 DEG@CGR-INC.COM  
 DAVID AUSTIN, CCIM EXT 114  
 AUSTIN@CGR-INC.COM



**703-544-1013**





DAVID GUNTER, CCIM EXT 111  
DEG@CGR-INC.COM  
DAVID AUSTIN, CCIM EXT 114  
AUSTIN@CGR-INC.COM



**703-544-1013**