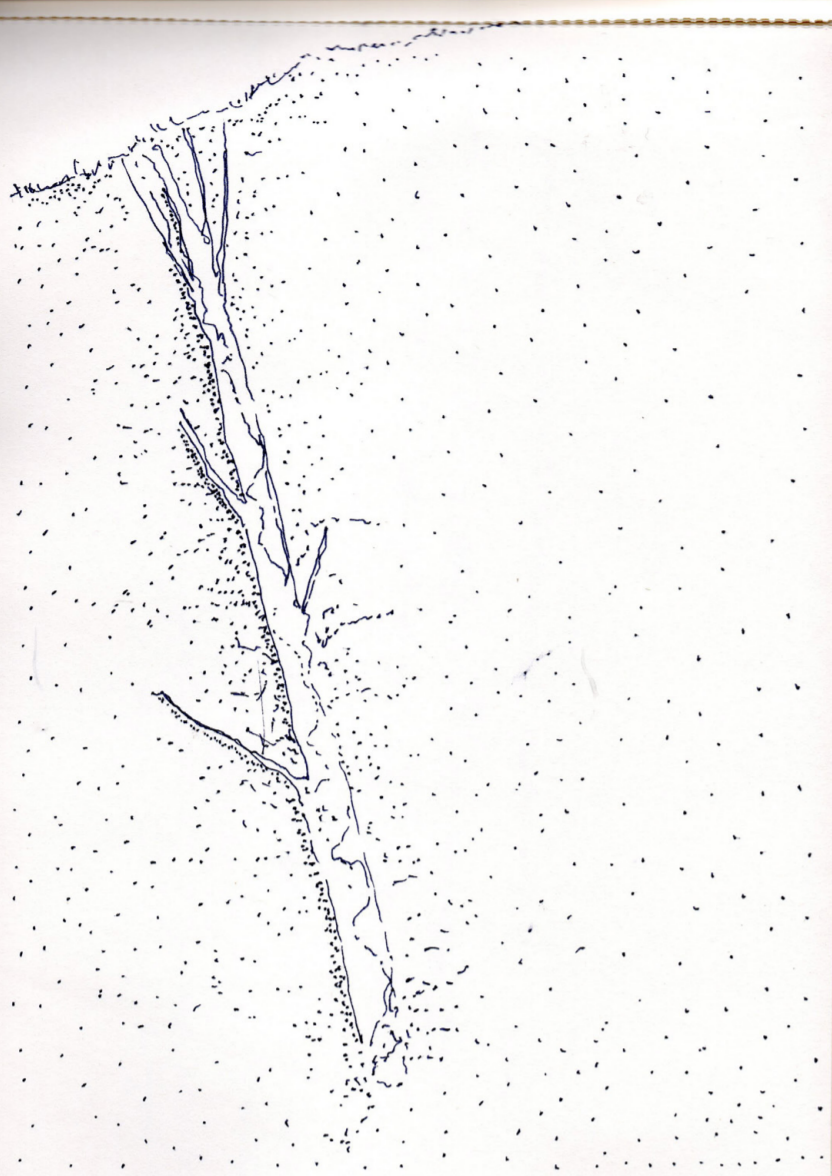


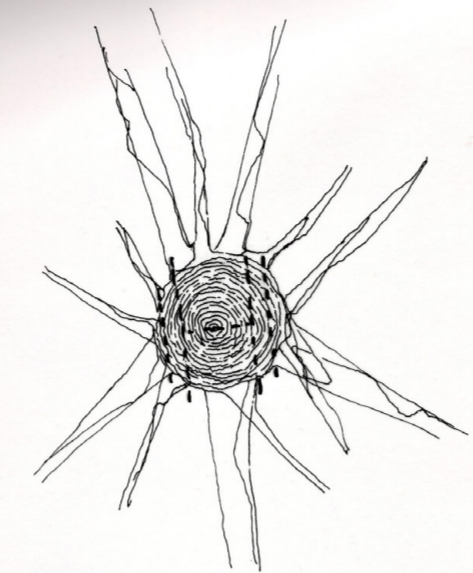
retreat / shelter / nest



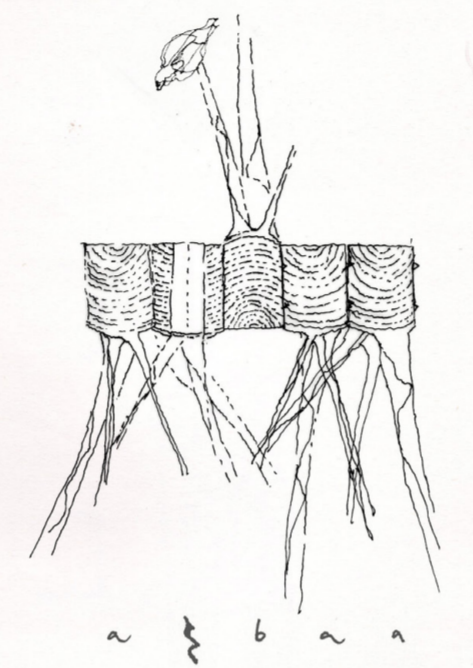
1 the fallen spruce tree hit by the frost evokes thoughts of taking it and using it, as something of a starting point for a barter with nature.



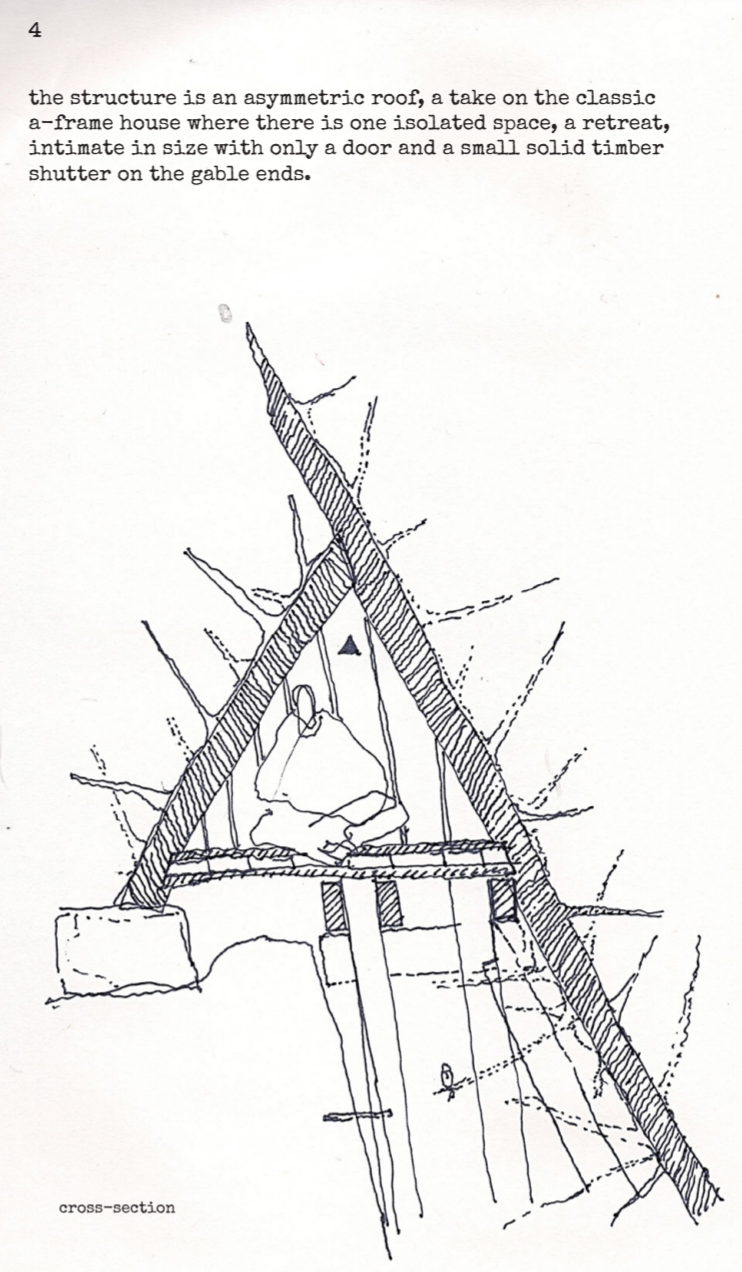
2 putting things together in timber implies that every piece is from its own tree whose branches held the weight of snow, deflected rain, and provided shelter or even a place to nest for birds and other animals. the proposed structure attempts to evoke these images by carefully rearranging pieces of timber into built arrangement.



3  
timber pieces  
to make timber, tree stems are cut in half and then sliced into logs of rectangular profile but limbed only where necessary.

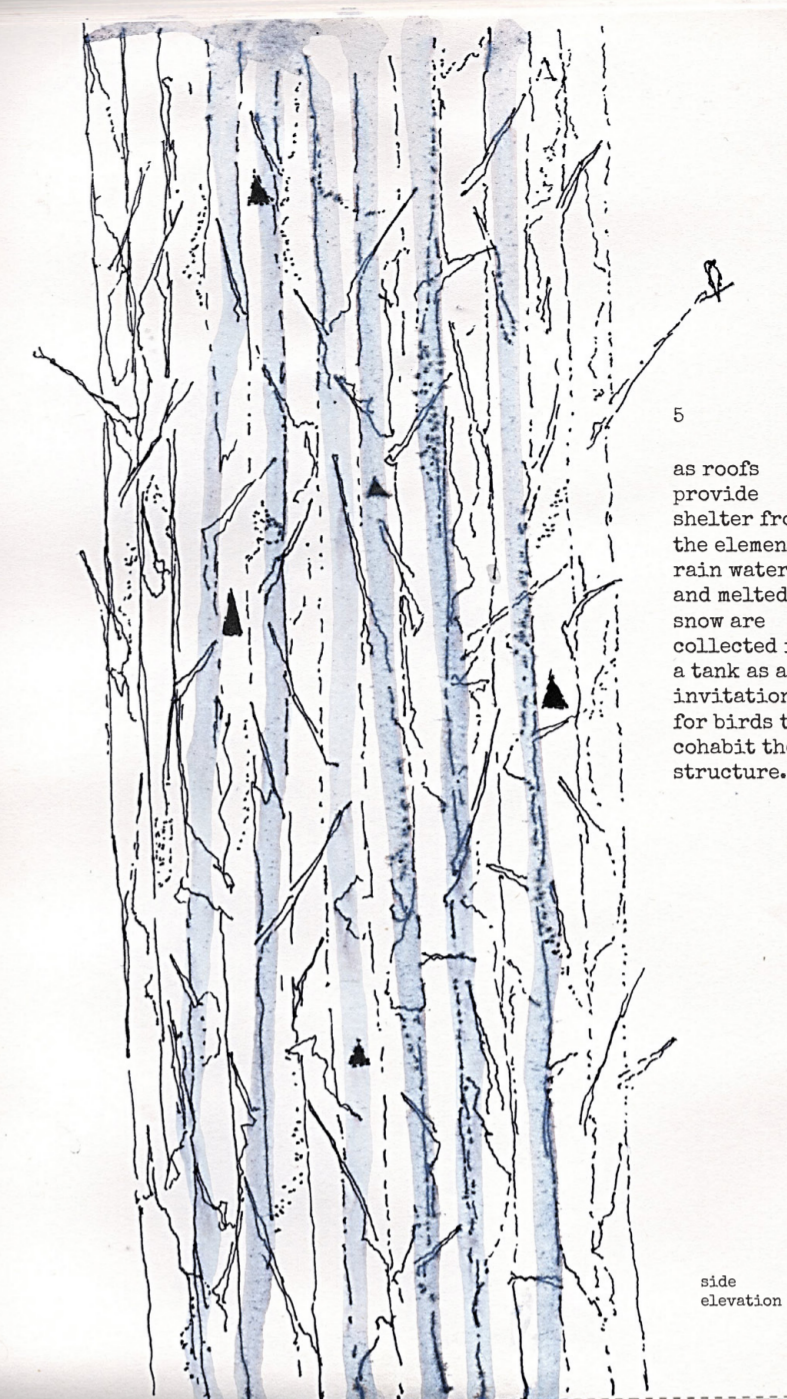


the resulting pieces have a sectional profile with three sawn faces and one that retained the projecting branches.  
these elements can be arranged into simple compositions where branches show a variation in direction (a/b) combined with small openings, rests.



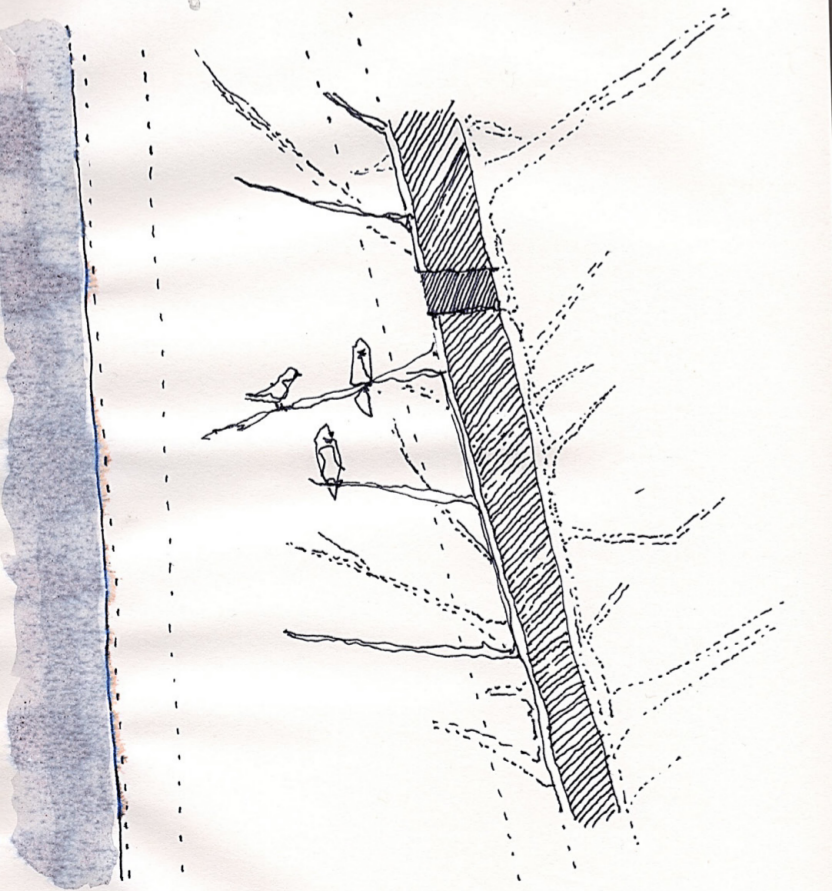
4  
the structure is an asymmetric roof, a take on the classic a-frame house where there is one isolated space, a retreat, intimate in size with only a door and a small solid timber shutter on the gable ends.

cross-section



5  
as roofs provide shelter from the elements, rain water and melted snow are collected in a tank as an invitation for birds to cohabit the structure.

side elevation



9  
The space enclosed between the stepping Nordingrå granite and the roof construction with its inward-facing branches and small triangular openings form a place to nest.

8  
exploded axonometry

(a) vents are bored into the solid softwood timber wall

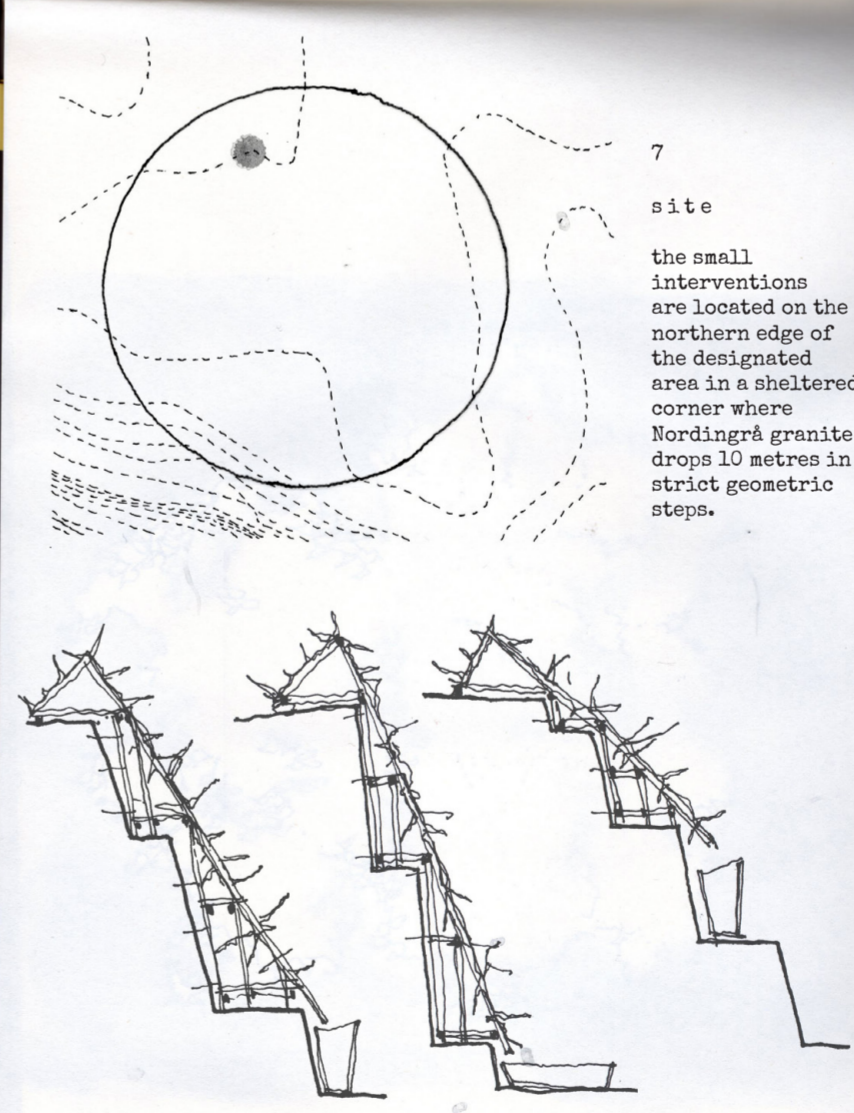
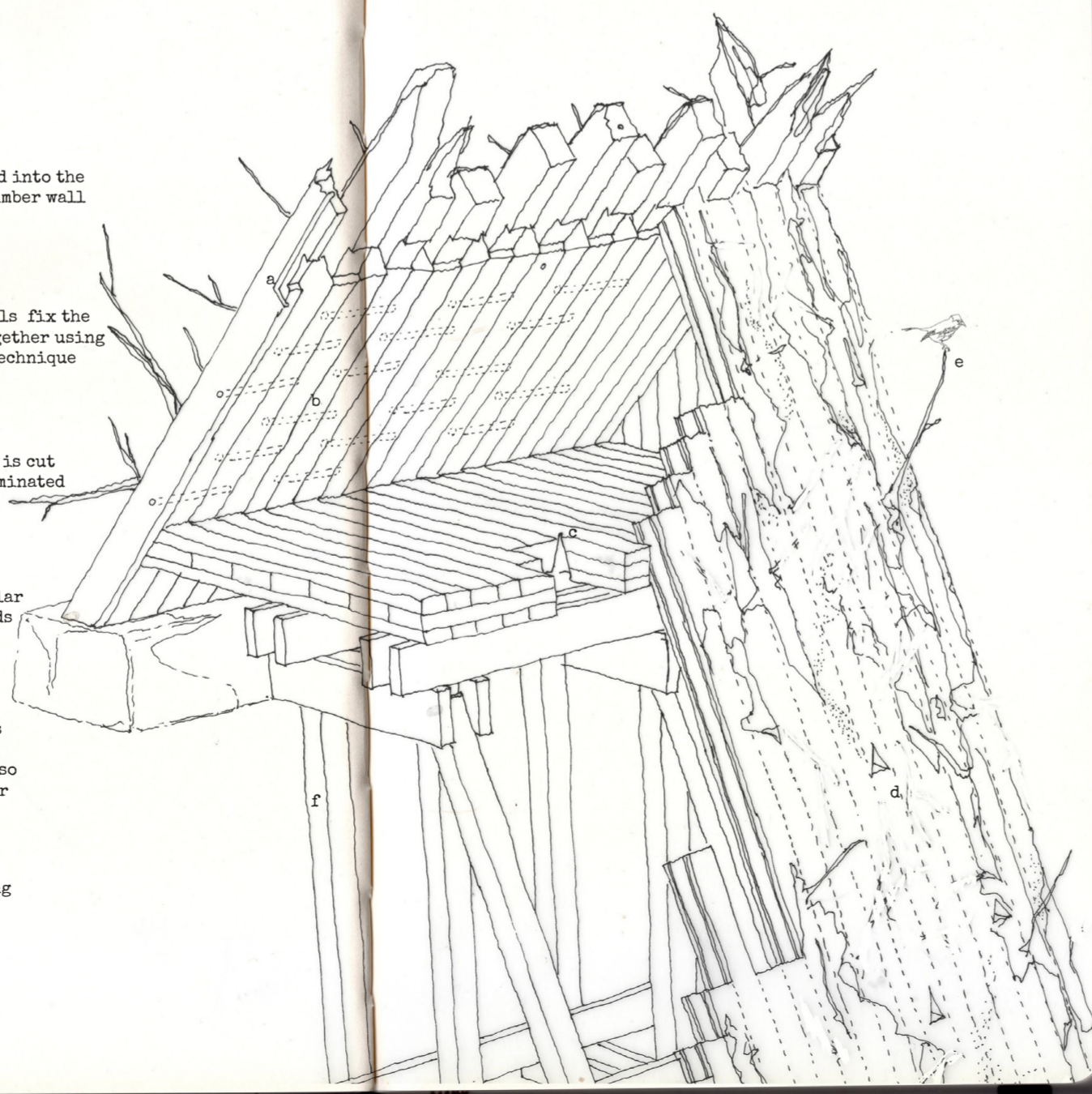
(b) hardwood dowels fix the wall elements together using the Brettstapel technique

(c) a conical vent is cut into the cross laminated timber deck

(d) small triangular openings for birds

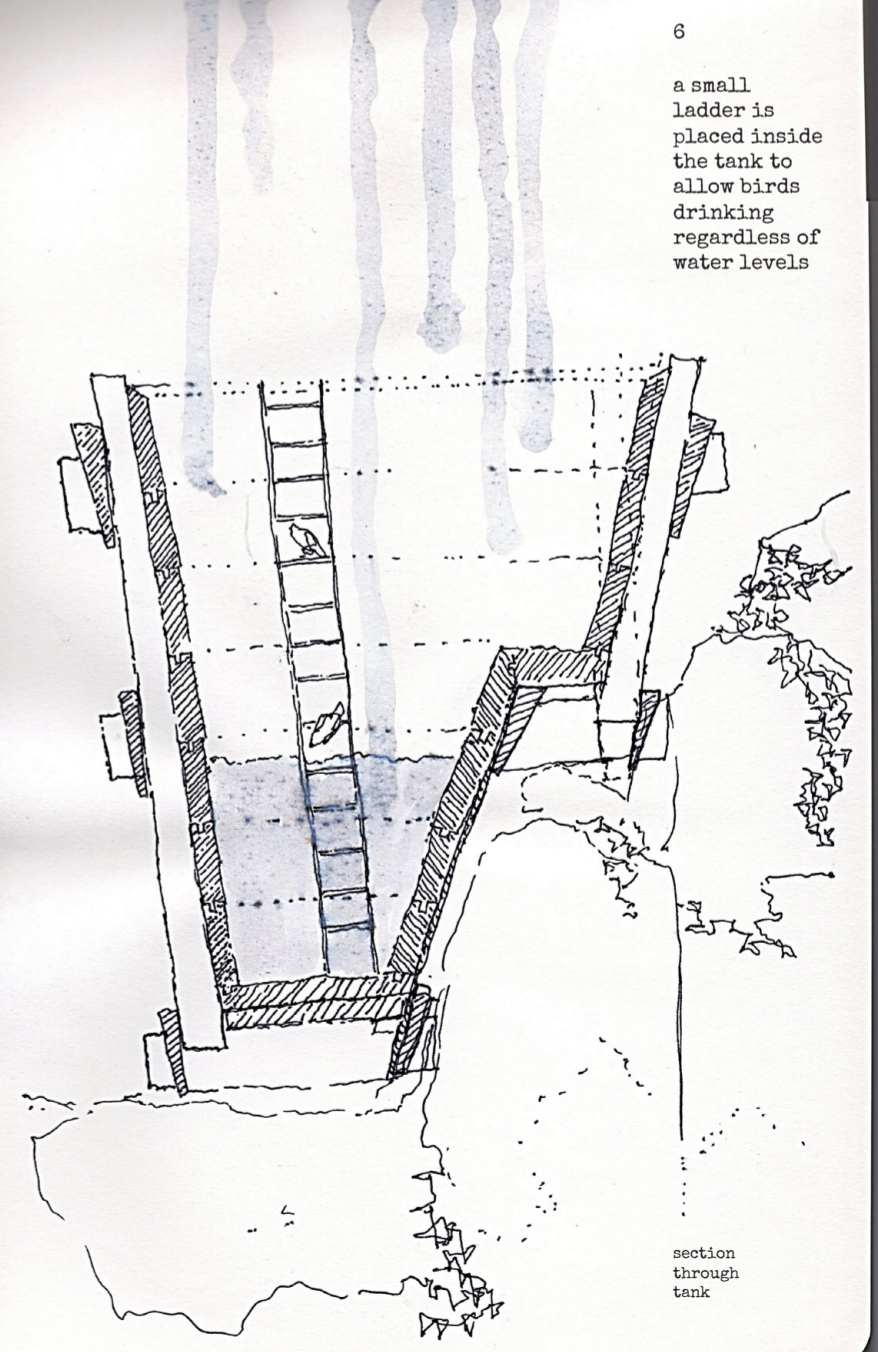
(e) branches in wintertime act as large-scale snow guards but are also resting places for birds

(f) roof supporting structure



7  
site  
the small interventions are located on the northern edge of the designated area in a sheltered corner where Nordingrå granite drops 10 metres in strict geometric steps.

site sections  
the structures are all the same type and can accommodate one or two people, but adapt to the topography of the site as the roof supporting frame steps onto the different slabs of stone.



6  
a small ladder is placed inside the tank to allow birds drinking regardless of water levels

section through tank