



# SuperDuper!

## Heroic System Recovery For Mere Mortals.

### **The challenge of software “seed” or “beta” programs**

Testing new software – especially new operating system software – can be an incredibly difficult task. If you upgrade your “main system”, **you’re putting it at risk**. After all, there’s a reason most beta programs suggest that you shouldn’t use the software with “important data”.

At the same time, if you **don’t** use your real system, you’re not really testing it in a real world environment! And if you’re not really testing it the way you’d use it, what’s the point?

### **The problem with uninstallers and downgraders/reversioners**

Even if you decide to take the chance and install the new software on your real system in day-to-day use (since there’s no other way to give good feedback), you’ve got a real problem when a new version comes out. In some cases, you could get a new build every week!

It’s clearly not practical to wipe your entire computer and “clean install” a new build. Uninstallers and “downgraders” or “reversioners” are notoriously problematic: if you’ve used them, and run into a hard-to-reproduce problem, the first thing that gets sent back is to “try it with a clean install”. Which is critical, but could take **hours and hours** of your time to do.

But there’s another way!

### **SuperDuper! The practical solution for the aggressive tester**

The SuperDuper **Safety Clone** was specifically designed to make testing new software easy and trouble-free. Once you’ve created the Safety Clone, you can install new builds on it **without affecting your regular system!** This means that if you have trouble, you can boot right back to the original!

It also means that installing a new version is trivial. You simply boot back to the original, re-clone, and you’re ready to actually **clean install from the same state as before** — without having to run a risky downgrader or reversioners. And with the new **Smart Update** feature, it takes mere minutes!

Not only that, but if the software was distributed as a package, SuperDuper will install it on the clone, and then reboot – all automatically!

## What's a Safety Clone?

A **Safety Clone** is a bootable copy of your system, stored on another hard drive or partition, that **shares** your personal documents and data with the original. To preserve your original system, you actually **use the Safety Clone as your startup volume, and install the "seed" software on it.**

You can safely install any system updates, drivers or programs on the Safety Clone, without worrying about changing your original system. If anything goes wrong, or you need to "roll back", you can simply start up from the original system: SuperDuper has preserved it in its original state – but all your new and changed personal documents are totally up to date. **Within minutes**, you're up and running again – **without having to go through a difficult and time-consuming restore process.**

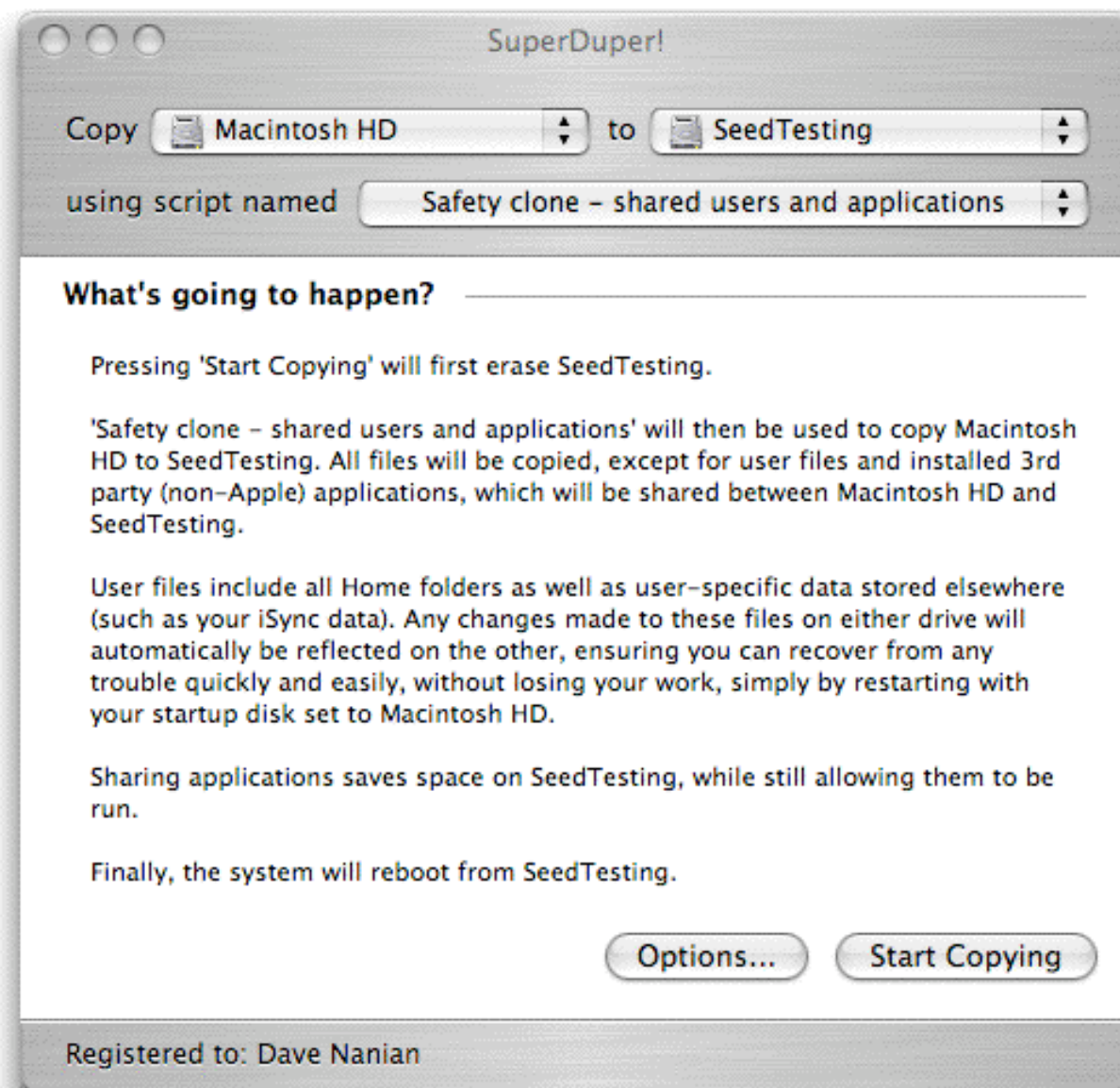
Of course, the original volume, being a "checkpoint", doesn't have any of the programs or system updates that you began testing after you made the copy. That's a good thing, since it allows you to start again with a "clean system" the next time around!

## Creating your first “Seed Testing” clone

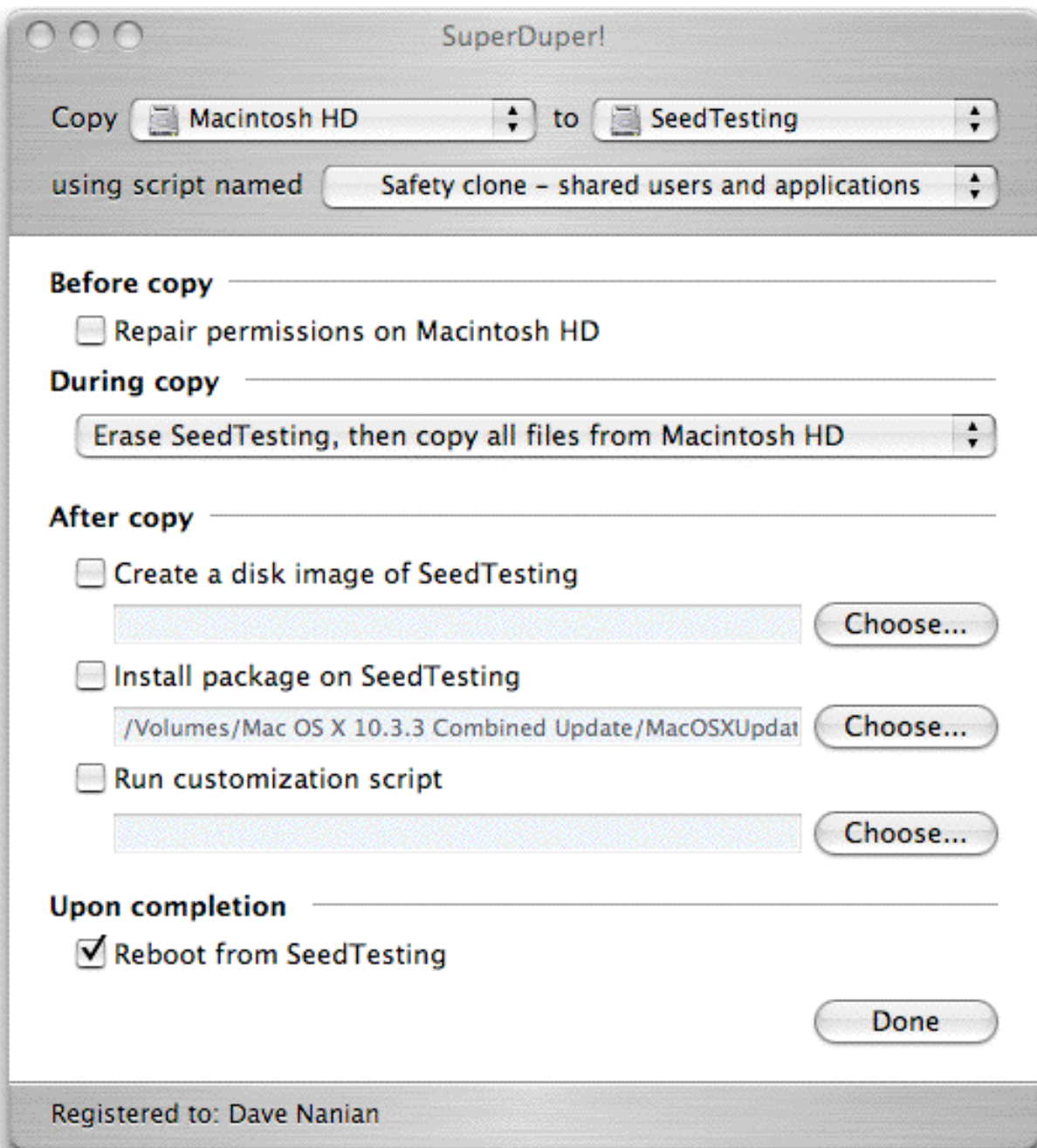
First, you need a volume on which to create your Safety Clone. You can use another drive or partition, as long as it’s large enough to hold the data you’re trying to copy. Typically, 10G is enough, as long as you use the *Safety Clone - shared users and applications* Copy Script.

If you need to create a new partition, follow the simple steps in the SuperDuper User’s Guide’s Appendix.

Once you’ve got a place to clone to, you need to create your Safety Clone. Start SuperDuper, select your regular system in the first pop-up, and the volume you’re going to clone to in the second. For the script, choose *Safety Clone - shared users and applications*:



Now, click the **Options...** button.



If the software you're installing comes as a single package – such as a simple operating system “point upgrade” – you can install it immediately after the image is made by checking **Install package on...** and specifying the path to the package. If the package is on a disk image, you should mount the image first.

---

### **Important Note!**

During testing, some packages will *not* install properly to a partition other than the one you've booted from. If you see, in any release notes, a comment along the lines of “relocated applications will not update properly...”, do **not** use the **Install package...** option.

To be absolutely safe, unless you're sure – or have confirmed that it works with the package author – always reboot from the target partition before installing a package.

---

Finally, make sure **Reboot from...** is checked and click **Done**.

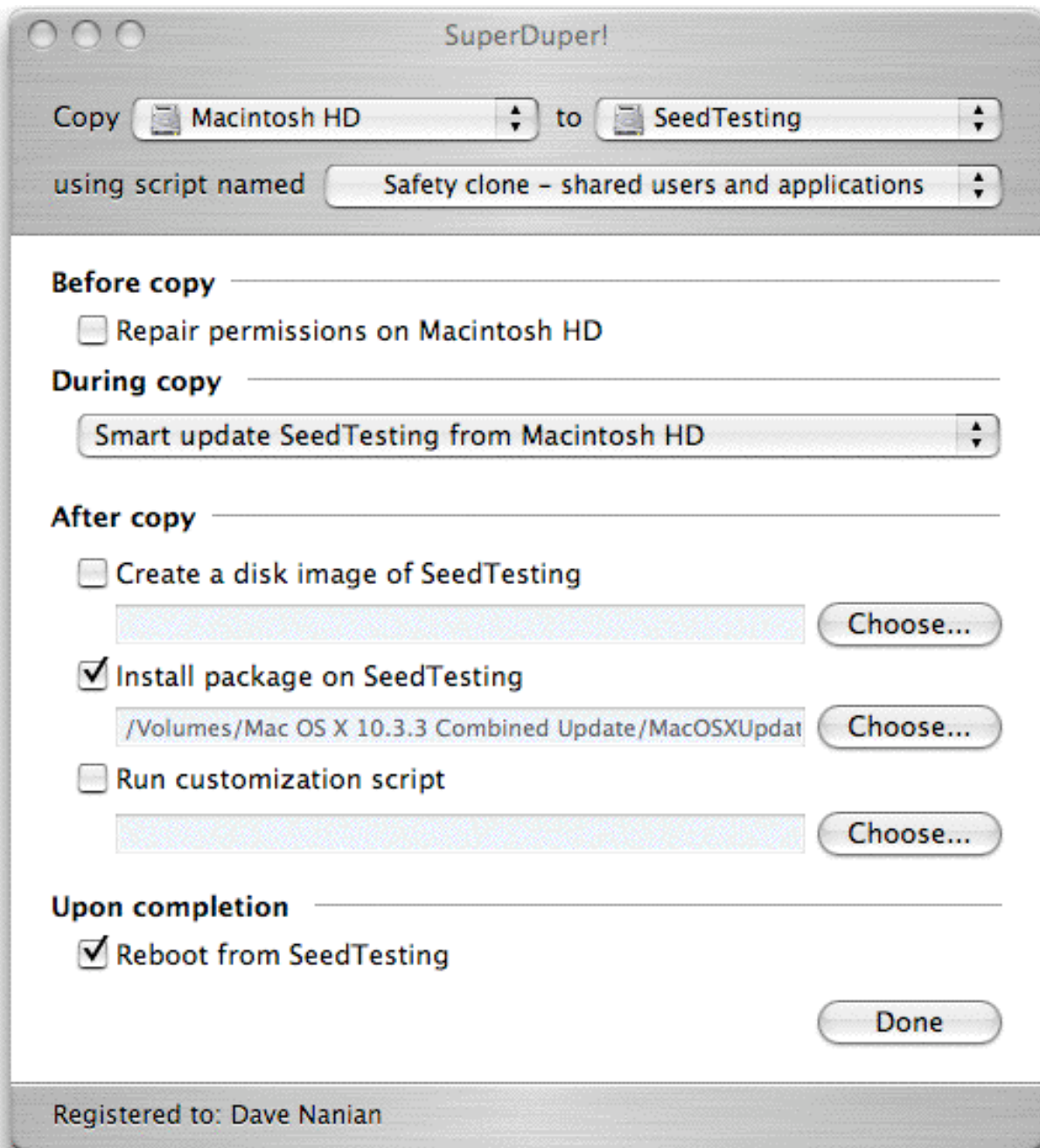
Confirm your selections by reading the **What's going to happen?** section. When you're ready, click **Start Copying**, and let SuperDuper do the rest!

### **Installing a new build**

When a new build is released, you don't have to uninstall, restore an image or use a downgrader/reversioner. Instead, start up from the original drive (in this example, *Macintosh HD*) and run SuperDuper again.

SuperDuper v1.2 includes a terrific new feature called **Smart Update**. Smart Update acts just like **Erase Seed Testing, then copy files from Macintosh HD**, but only copies and/or erases those files necessary to achieve this result. This automatically “optimizes” a copy operation, ensuring that the smallest amount of data is copied – which saves you tons of time!

So, in the **During copy** section, choose **Smart Update Seed Testing from Macintosh HD**. Choose a package to install, if desired, and then ensure **Reboot from Seed Testing** is checked.



Click **Done**, verify your selections in **What's going to happen?**, and then click **Start Copying**. Within minutes you're ready to go again!

**It's that easy!**