

PMTrac[®] User Manual

Revision 4.00 (10/01/18)



Table of Contents

1.0 INTRODUCTION	4
2.0 PMTRAC SOFTWARE AND DOCUMENTATION INSTALLATION	4
3.0 PM SENSOR MECHANICAL AND ELECTRICAL INSTALLATION	5
3.1 REQUIRED CABLES, ACCESSORIES AND DOCUMENTS	5
3.2 PMTRAC SENSOR MECHANICAL INSTALLATION	5
3.3 PMTRAC ELECTRICAL CONNECTIONS	6
3.4 CAN TERMINATION	7
4.0 BASIC OPERATION	8
4.1 CAN ID CONFIGURATION	8
4.1.1 PMTrac Config Utility Operating Instructions	8
4.1.2 PMTrac Discovery Utility Operating Instructions	10
4.2 DATA LOGGING	11
4.2.1 PMTrac Logger Operating Instructions	11
4.3 VECTOR CANALYZER DBC FILE	14
5.0 PMTRAC SENSOR OUTPUT	15
6.0 SPECIFICATIONS.....	16
7.0 TROUBLESHOOTING	17
8.0 WARNINGS AND PRECAUTIONS.....	17
APPENDIX A: PMTRAC CAN COMMUNICATION PROTOCOL VERSION 3.0	19
A.1 OVERVIEW	19
A.2 COMMAND MESSAGES	21
A.3 AVAILABLE COMMANDS	22
A.4 CURRENT DATA MESSAGE	24
A.5 HEATER DATA MESSAGE	25
A.6 DISCOVERY MESSAGES	26

List of Figures

Figure 1. Typical PMTrac Sensor Installation in Exhaust Pipe	5
Figure 2. PMTrac Electrical Connections	6
Figure 3. PMTrac Config Screen after Changing Command, Current, and Heater IDs from Default Values....	9
Figure 4. PMTrac Discovery Screen After Finding Command, Current Data, and Heater Data IDs	10
Figure 5. PMTrac Logger with 3 Sensors Present	13
Figure 6. PMTrac Logger with 3 Sensors with HV Off/on and after Introduction of Soot.....	14
Figure 7. PMTrac Sensor Demonstrates Good Linearity with PM Concentration at Constant EGV and EGT	15

1.0 Introduction

The PMTrac® PM sensor was developed for measuring particulate matter (PM), or soot, concentrations in diesel or gasoline exhaust by EmiSense Technologies, LLC. Please review this manual and the warning and caution statements before using the PMTrac system.

This user manual covers the: 1) software installation; 2) mechanical installation of sensors in the exhaust pipe; 3) electrical connections between the electronics module, power, and CAN bus; 4) PMTrac signal output and 5) troubleshooting.

2.0 PMTrac Software and Documentation Installation

Download the PMTrac installer from our website:

<http://emisense.com/pmtrac-downloads/>

Run the PMTrac installer on a Windows PC (Windows 7 or newer) and follow the step by step instructions. It will install the following:

- PMTrac Manual (this document)
- Utilities to configure PMTrac hardware
- A sample PMTrac data logger
- LabView source for the above logger and utilities
- A Vector Canalyzer DBC file

Note: The installer will also install the National Instrument LabView Run-Time environment and National Instrument NI-CAN USB CAN Interface drivers on your machine.

3.3 PMTrac Electrical Connections

The electronics module has four electrical connections on a TE Connectivity brand locking connector. Looking into the connector with the locking tab up and the large guide key to the left, the connections are:

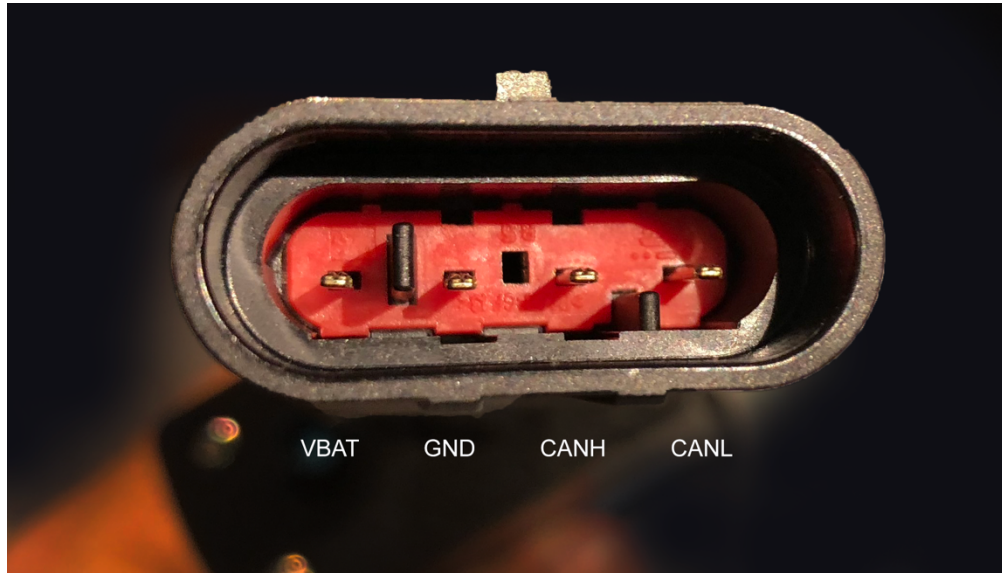


Figure 2. PMTrac Electrical Connections

Name	Pin #	Description
VBAT	4	Power + (+12.5 to 15.5 VDC)
GND	3	Ground
CANH	2	CAN Bus 'High' line
CANL	1	CAN Bus 'Low' line

If you wish to make your own cable the mating connector is TE Connectivity part number: 282088-1. The matching pins are TE Connectivity part number: 282403-1. Both are available from Digikey.com.

The electronics module is powered by connecting 12.5-15.5V DC to the VBAT and GND connections. These are the Red (VBAT) and Black (GND) banana plugs on the provided adapter cable. When power is connected, the LED on the front of the electronics module should light up. When a test is completed, power off the unit by turning off your power supply or by disconnecting the power to the electronics module.

The electronics module communicates with a host controller via a CAN bus. CAN requires two data wires, CANH (high) and CANL (low) and an optional signal ground. The provided adapter cable connects CAN to a female DB-9 connector (CANL pin 2, GND pin 3, and CANH pin 7). The DB-9 can be connected directly to the mating connector on the provided National Instruments USB-8473 CAN interface. When the electronics module is powered on and communicating with a host, it should start broadcasting data messages at 1 Hz. When the module sends a CAN message, the LED will briefly turn off, so a blinking LED indicates communication with the controller. The electrode high voltage (HV) is not turned

on until the module receives the appropriate command from the controller. Details about the command and data messages are found in Appendix A of this document.

3.4 CAN Termination

In order to operate correctly a CAN bus needs to be 'terminated'. This is normally done with a resistor at each end of the bus. The provided adapter cable has a 120 ohm termination resistor across the CANH and CANL lines. If you build your own cable you will also need to properly terminate your bus wiring. No termination is provided in the electronics module itself.

4.0 Basic Operation

Up to eight PMTrac systems can be operated and monitored simultaneously using the PMTrac Logger and a National Instruments USB-8473 CAN interface. Alternatively, the modules can be operated and monitored using appropriate software and hardware from vendors such as Vector, Kvaser, and others.

The basic steps of the PMTrac system operation are as follows:

1. Mechanical installation
2. Electrical connections
3. Power on electronics module
4. Verify communication
5. Change data reporting rate if needed (default is 1 Hz)
6. Once exhaust gas dew point is exceeded, turn on the HV electrode
7. Turn on heater monitoring (recommended, heater version only)
8. Power off electrical module once test is completed

The rest of this section provides instructions on operation of the PMTrac configuration utilities and logger included in the installer.

4.1 CAN ID Configuration

If more than one module is to be operated on the same CAN bus, each must have unique message IDs. Typically sensors are shipped from EmiSense with the following standard message IDs:

Command ID = 100

Current Data ID = 110

Heater Data ID = 120

If shipped with different message ID's the message ID's as shipped will be listed on the label the top of the electronics module.

The PMTrac Config utility is used to change the message IDs.

4.1.1 PMTrac Config Utility Operating Instructions

1. Connections and Communication
 - a. Power on the PMTrac electronics module
 - b. Connect NI USB-8473 to the electronics module and to your PC
 - c. Run the PMTrac Config utility
 - d. Verify CAN communication
 - i. Select CAN interface (0 is default)
 - ii. CAN indicator will illuminate bright green when CAN communication is established

2. Changing IDs

- a. Enter the Command ID of the target module
 - i. Select standard (Std) or extended (Ext) ID
- b. Enter the new IDs
 - i. Select standard (Std) or extended (Ext) ID's
- c. Select Change IDs
 - i. It should illuminate bright green momentarily
 - ii. The IDs will be changed to the New IDs that were entered

3. Exit the program by selecting Exit

The following figure shows an example:

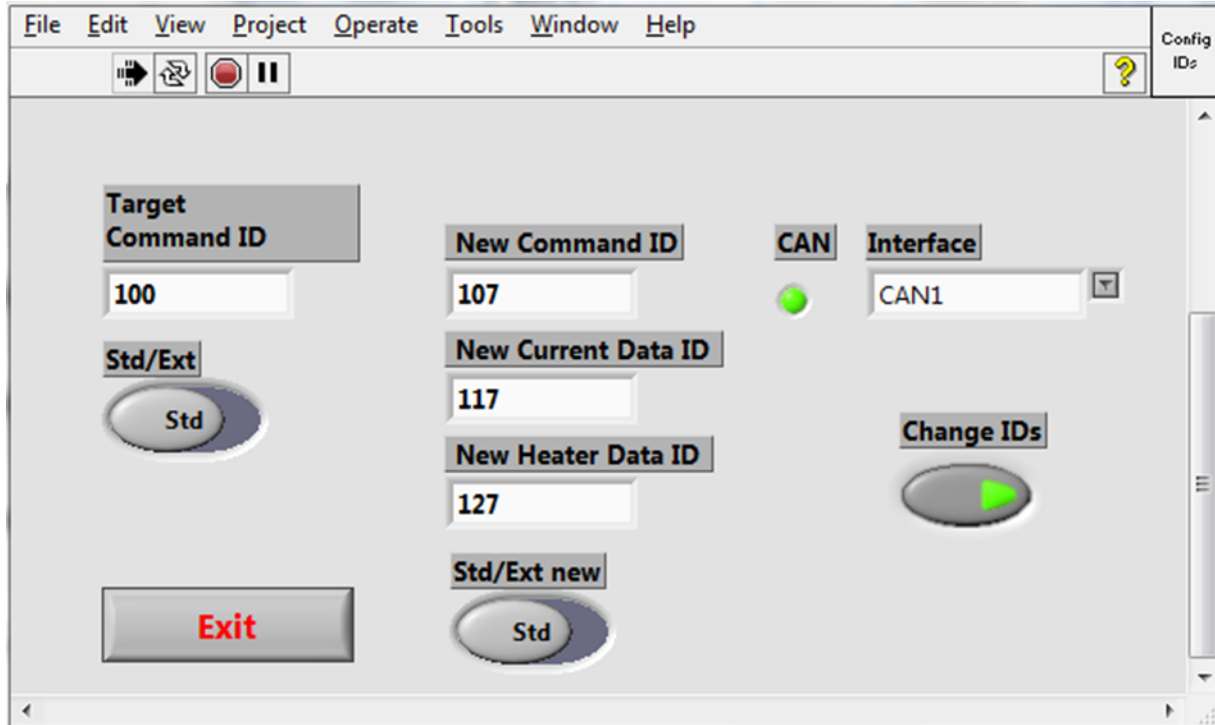


Figure 3. PMTrac Config Screen after Changing Command, Current, and Heater IDs from Default Values

If the message IDs of a module are not known, they can be determined using the PMTrac Discovery utility. This utility is to be used only when a single PMTrac module is connected to the CAN bus.

4.1.2 PMTrac Discovery Utility Operating Instructions

1. Connections and Communication
 - a. Power on the PMTrac electronics module
 - i. Make sure only one PMTrac module is connected to CAN bus
 - b. Connect NI USB-8473 to the electronics module and to your PC
 - c. Run the PMTrac Discovery utility
 - d. Verify CAN communication
 - i. Select CAN interface (0 is default)
 - ii. CAN LED will illuminate bright green when CAN communication is established
2. Finding IDs
 - a. Select any one of the 3 IDs from the ID to find list
 - i. Select Find ID
 1. When the ID is found, the ID Found? LED will illuminate bright green momentarily
 2. The appropriate ID box on the right side of the screen will populate with the ID
 - a. If the ID is extended, XTND will appear after the ID, for example : 100 XTND
 - b. Repeat for the other 2 IDs
3. Exit the program by selecting Exit

The following figure shows an example for a module with the default IDs:

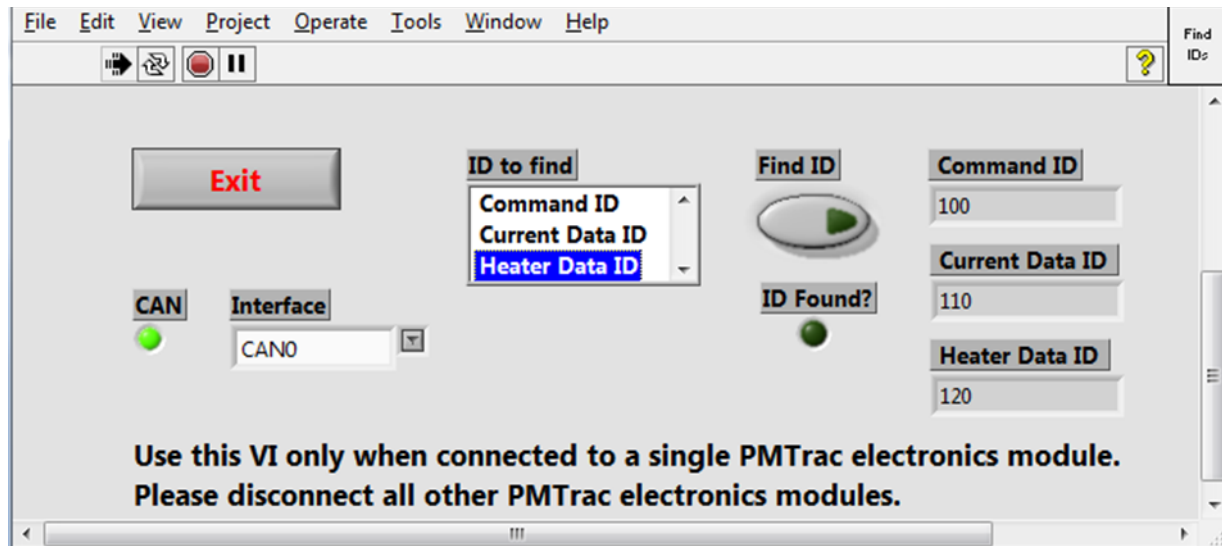


Figure 4. PMTrac Discovery Screen After Finding Command, Current Data, and Heater Data IDs

4.2 Data Logging

Up to eight PMTrac systems can be operated and monitored simultaneously using the PMTrac Logger and a National Instruments USB-8473 CAN interface. The Logger can be used to send commands to the electronics modules, log the sensor HV, current and heater data (for heated sensor versions only) and view the current data graphically.

4.2.1 PMTrac Logger Operating Instructions

1. Connections and Communication

- a. Connect all PMTrac systems to be tested to the CAN bus
- b. Connect NI USB-8473 to the CAN bus and to your PC
- c. Run the PMTrac Logger
- d. Verify CAN communication
 - i. Select CAN interface (0 is default)
 - ii. CAN LED will illuminate bright green when CAN communication is established

2. Configuration

- a. Enter the appropriate message IDs, sensor IDs and electronics IDs (optional) into the Sensor ID Table
 - i. If the IDs are extended, enter yes or Yes into the XTND field
 - ii. Each time the logger is started, the latest saved table will be loaded
 1. The table is saved each time data logging is started and on exit of the program
 - iii. The table cannot be edited while data logging is on
- b. Once the PMTrac modules are powered, the Present LED for each module should illuminate bright green
- c. Enter the log file name into the Log File Name field
 - i. The date will be added to the log file name
 - ii. The date format is ddmmyy
- d. The log file will be stored in the folder indicated in the Log File Path field

3. Data Logging

- a. Select Start Logging to create a log file and plot the PMTrac sensor current vs. time
 - i. The Data Logging LED will light bright green
 - ii. A log file with the name you entered will be created
 - 1. Data from each module present will be logged to the file
 - iii. Sensor current vs. time will be displayed on the graph
- b. To stop logging, select Start Logging again

4. Controlling the Modules

- a. The following settings can be set for the modules:
 - i. HV on/off
 - ii. Heater logging on/off (heated sensor versions only)
 - iii. Data reporting rate 1Hz/10Hz (applies to all modules present)
 - 1. Heater data is always reported at 1Hz
- b. Within the box labeled Control, select HV and Log Htr for each module as desired
 - i. Bright green indicates on
- c. Set the data reporting rate with the 1Hz/10Hz toggle switch
- d. Select Update Settings
 - i. The settings for each module present will be updated

5. Viewing the Status

- a. The following status indicators can be viewed for each module anytime CAN communication is established:
 - i. Present (data messages are being received)
 - ii. HV stat (HV status)
 - iii. Log Htr (heater logging on/off)
 - iv. Last nA (value of the last sensor current data received, in nA)
- b. Present and Log Htr status indicators are bright green when on
 - i. Because heater reporting is always at 1 Hz, the Log Htr LEDs will flash when data reporting is set to 10 Hz

- c. HV stat has multiple states
 - i. Blue – on at normal levels
 - ii. Yellow – on but low
 - iii. Red – on but very low
 - 1. A persistent red status may indicate a short in the sensor or an issue with the electronics module
 - iv. Black – HV off

6. Viewing the Current Data Graphically

- a. When data logging is on, the sensor current for each PMTrac system present is displayed on the graph
 - i. The y-axis is current in nA
 - ii. The x-axis is elapsed time in seconds
- b. Each plot can be turned on/off by selecting the appropriate plot in the legend to the left of the graph

7. Exit the program by selecting Exit

Figure 5 shows an example with 3 sensors present and data logging not started. Figure 6 shows the same setup after starting data logging, turning HV and Htr monitoring on and adding soot to the exhaust pipe.

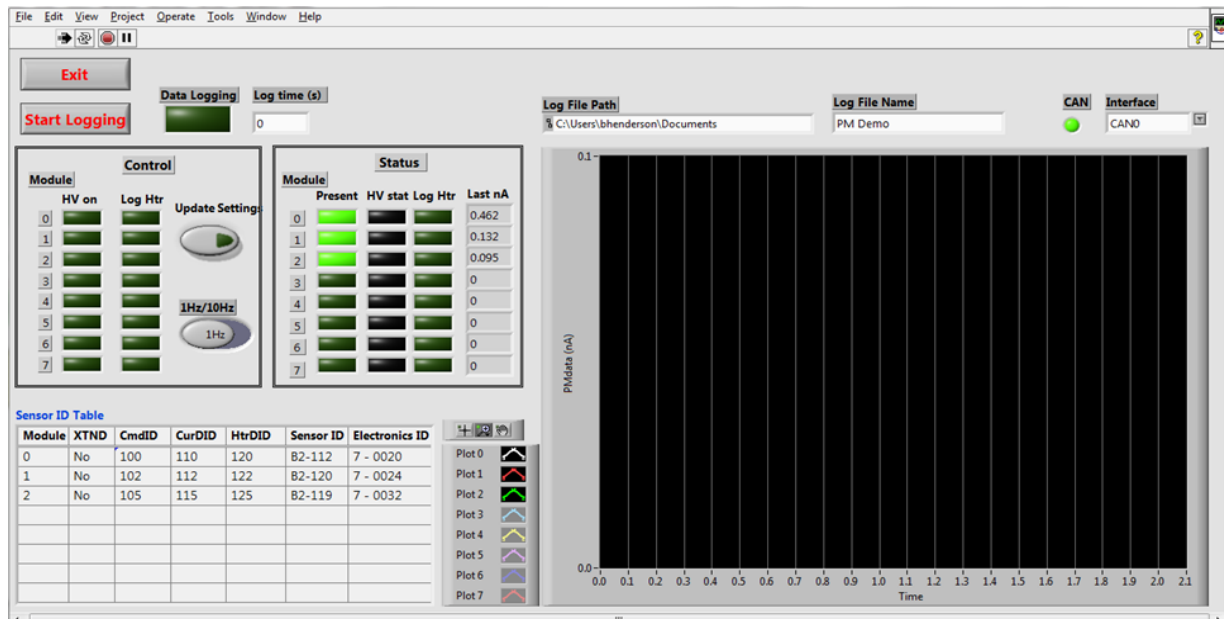


Figure 5. PMTrac Logger with 3 Sensors Present

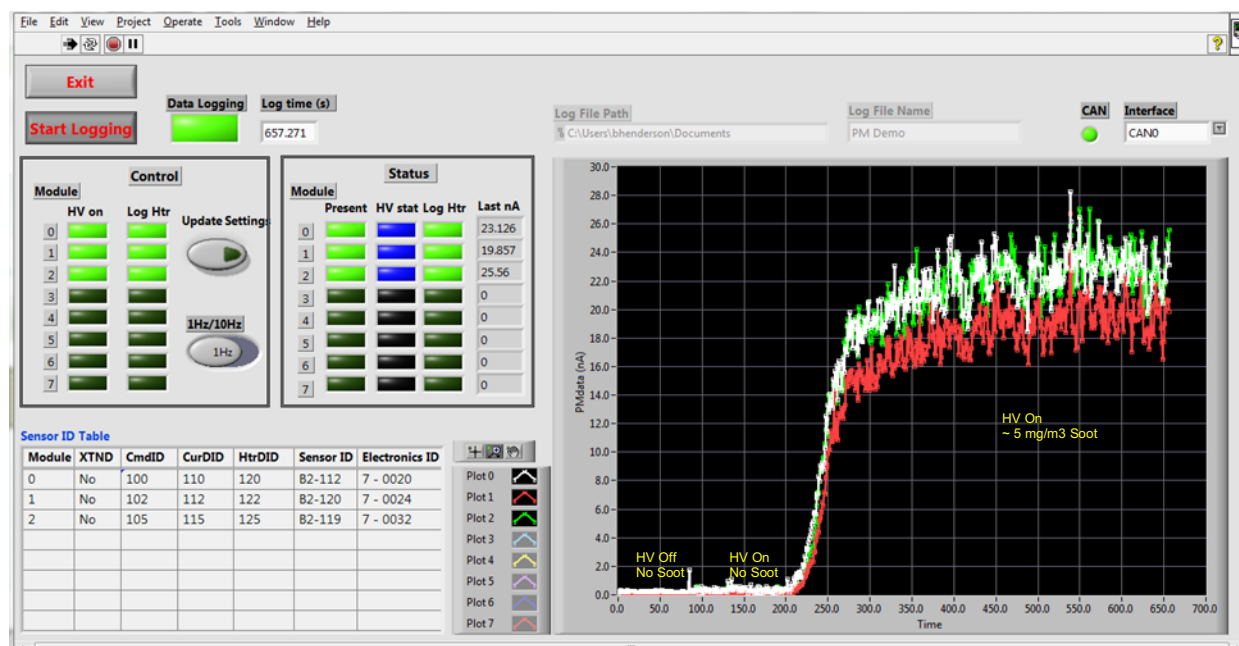


Figure 6. PMTrac Logger with 3 Sensors with HV Off/on and after Introduction of Soot

4.3 Vector Analyzer DBC File

The PMTrac Logger and utilities with NI USB-8473 provide a turnkey solution for PMTrac system operation. A DBC file created with the Vector CANdb++ Editor is also provided for those users that prefer to communicate with the PMTrac sensors using Vector CANalyzer or similar software.

5.0 PMTrac Sensor Output

As you can see in the chart below (figure 8) PMTrac sensors have a good statistical correlation to soot concentration. Typically on the order of 4nA per 1 mg/m³.

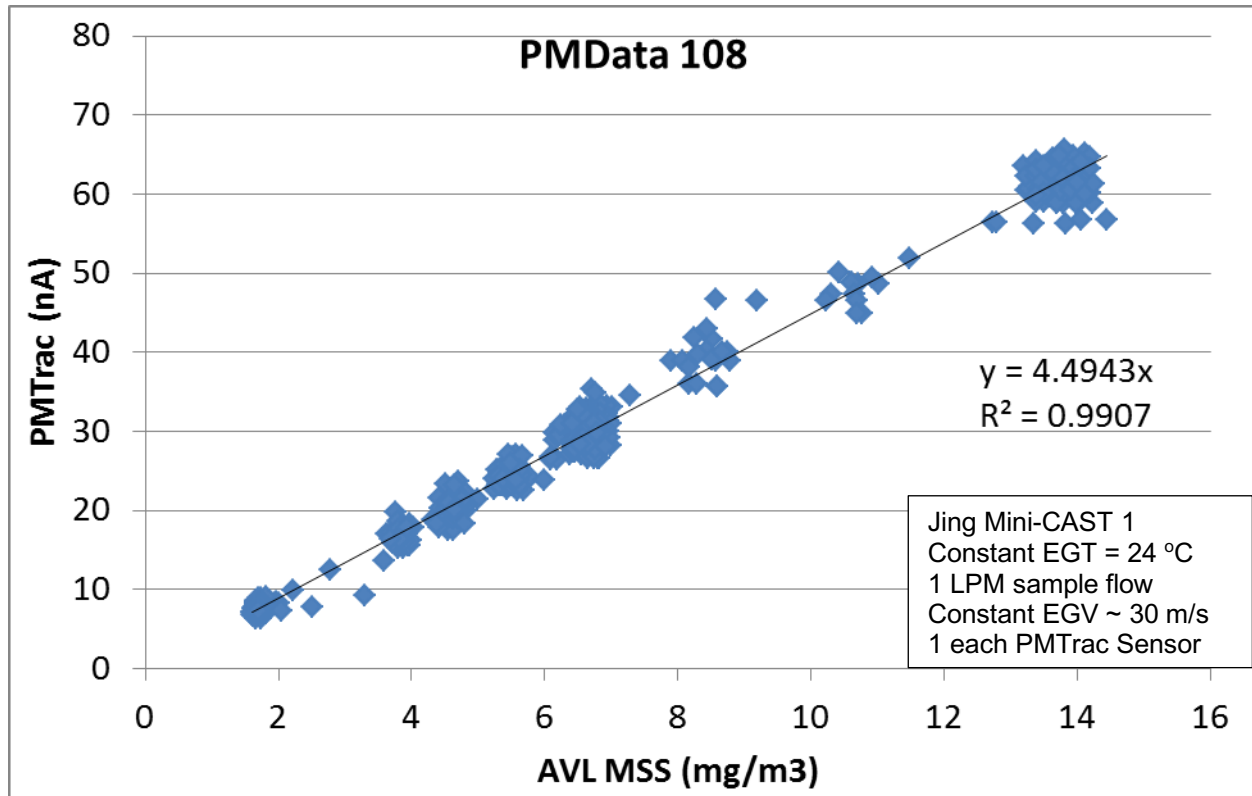


Figure 7. PMTrac Sensor Demonstrates Good Linearity with PM Concentration at Constant EGV and EGT

However the exact correlation will vary based on a number of factors, such as particle charge distribution, particle size distribution, and so on. So a sensor must be calibrated to your particular application. Normally this involves logging data from the system in operation and then analyzing the results.

For additional assistance on using PMTrac technology effectively for your application contact us at support@emisense.com.

6.0 Specifications

Table 1. PMTrac Specifications

Item	Low	High	Comment
Electronics box Input power	12.5 VDC	15.5 VDC	14V recommended for best results
CAN Communications baud rate	NA	500 kbit/s	Fixed at 500 Kbit/s
Operation concentration Range	0 mg/m ³	≈ 600 mg/m ³	Range may vary with engine and operating conditions
Housing threads (M18x1.5)		45 N-m (33 lbs-ft)	
Supply current	6 Amperes/sensor		During normal operation, steady state current should be 30 to 50 mA. Current is significantly higher momentarily on startup, during heater operation and for very short periods during normal operation.

7.0 Troubleshooting

You have received an EmiSense PMTrac® PM sensor(s) and electronic module(s). Table 2 is a troubleshooting guide. All technical operational and troubleshooting questions should be directed to support@emisense.com.

Table 2. PMTrac Troubleshooting Guide

Symptom	Possible Cause	Recommended Action
Reported high voltage is low and output appears normal	Excessive soot fouling	Blow compressed air through sensor holding compressed air nozzle ~ 1 to 2 inches from sensor tip
Reported high voltage is low and output excessively high	Soot bridge between electrode and sensor body	Blow compressed air through sensor holding compressed air nozzle ~ 1 to 2 inches from sensor tip
Non-zero baseline at EGT > 100C (output at zero or near zero PM)	Excessive soot fouling	Blow compressed air through sensor holding compressed air nozzle ~ 1 to 2 inches from sensor tip
Non-zero baseline at EGT < 100C (output at zero or near zero PM)	Water condensation	Wait until EGT exceeds dewpoint
No response	Sensor not properly connected	Check all connections
No response	Electronics not properly powered	Check input power to electronics
No response	Sensor damaged	Return sensor and electronics module to EmiSense
No response	Electronics damaged	Return sensor and electronics module to EmiSense

8.0 Warnings and Precautions

1. It is recommended to use minimal amounts of anti-seize and to apply it to the sensor's threads rather than the bung when installing our sensor in an exhaust pipe so that the sensor's intake holes don't get plugged with excessive anti-seize.
2. Do not exceed the maximum installation torque of 45 N-m (33 lbs-ft) to avoid any accidental damage to the threads/galling upon removal
3. It is required to wait until the gas temperature exceeds the dewpoint of the exhaust before powering up the sensor to avoid erroneous readings.
4. It is important to connect the all leads to the electronics module when operating the sensor.
5. This device operates at a high voltage. There is a possible risk of fire and/or electric shock.
6. Ensure all warning, cautions, and instructions for use are read and understood prior to using the PMTrac® PM Sensor Device.

9.0 REVISION HISTORY

Revision	Date	Comments
4.00	10/1/18	Updated for new IPC packaging
3.10	9/17/14	Removed obsolete sections, notes for no heater sensors
3.09	9/18/13	Updated for 3.0 firmware and LabView VI
3.08	8/9/13	Updated for revised Venturi and improved input protection. Removed autozap feature and heater regeneration references.
3.07	3/28/13	Corrected default settings (raw current, HV)
3.06	11/30/12	Corrected various typographical errors.
3.05	11/29/12	Update default settings and grounding info.
3.04	10/24/12	Version for SwRI testing
3.03	8/15/12	Corrected various typographical errors.
3.02	8/15/12	Updated figures.
3.01	8/14/12	Updated B2-specific instructions.
3.00	8/14/12	Initial Draft supporting 'B2' sensors
2.0 (aka "B")	10/5/2011	Supporting 'B1' sensors
1.0	6/13/11	Supporting 'A2" sensors

APPENDIX A: PMTrac CAN Communication Protocol version 3.0

Data Rate:	500kbps (fixed)
Message length:	All messages are 8 bytes (CAN dlc=8) in length
Byte order:	Most significant byte first bBig endian)
Readiness after power on:	The PMTrac sensor electronics are ready to receive commands no later than 2 seconds after power up
CAN Bus timing spec:	ISO 15765
Message IDs:	Programmable, extended and standard IDs supported Default IDs: Command ID: Standard ID of value 100h Current Data ID: Standard ID of value 110h Heater Data ID: Standard ID of value 120h

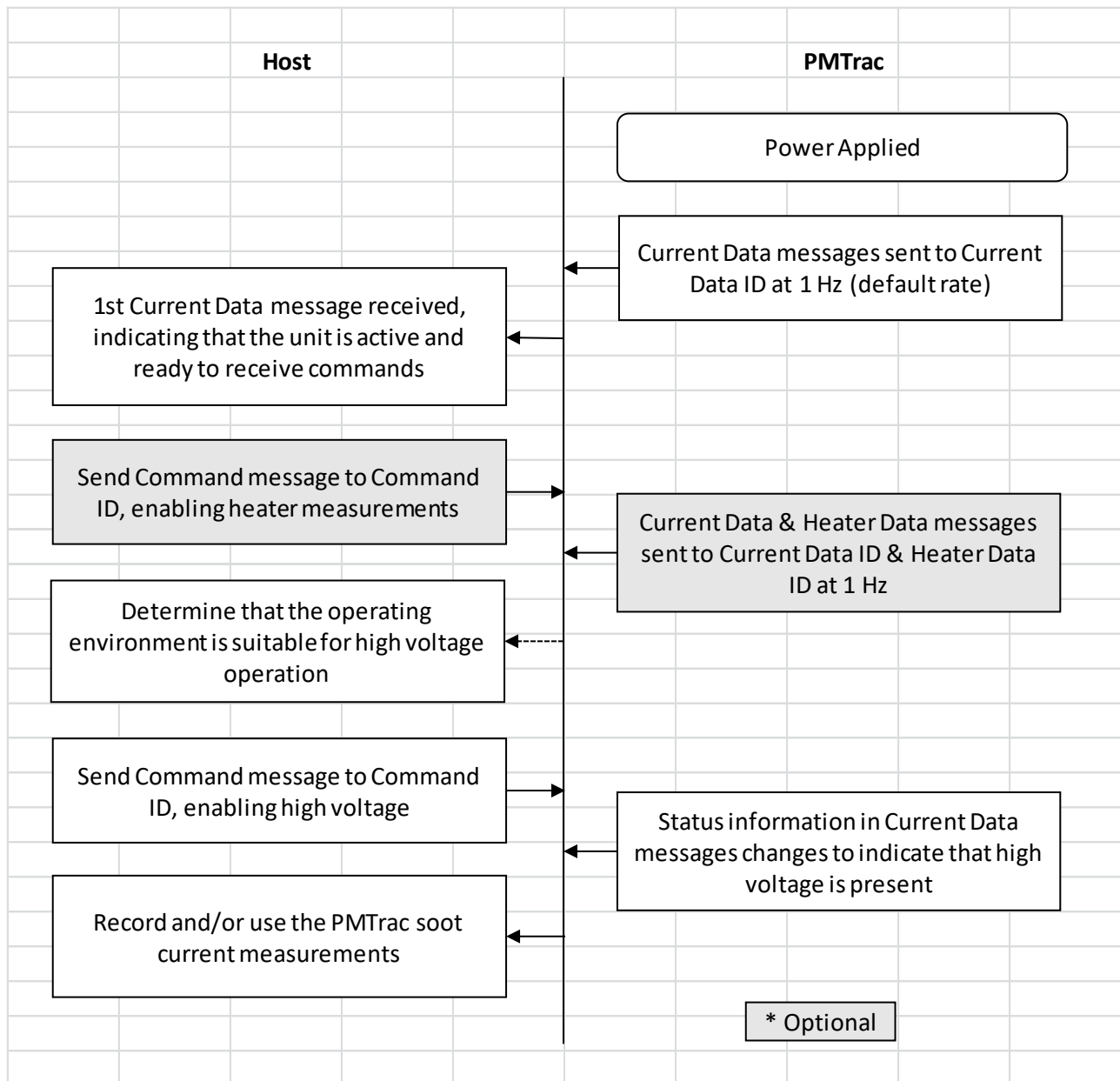
A.1 Overview

In normal operation PMTrac uses three basic message types. Each basic message type has its own dedicated message ID:

- Command messages are sent by host control systems to the Command ID to issue commands to the PMTrac electronics
- Current data messages are periodically sent by the PMTrac electronics to the Current Data ID
- Heater data messages are periodically sent by the PMTrac electronics to the Heater Data ID (when enabled)

The current data messages contain both the primary measurement (soot current) and basic system status.

CAN communication exchanges used in typical operation:



Flowchart of CAN Communication in Typical PMTrac Operation

Please note that the optional heater related steps above do not heat the sensor. Heater measurements are small bursts of heater operation that provide voltage and current information. These measurements, in turn, can be used to calculate heater resistance, which is an indirect indication of sensor temperature.

A.2 Command Messages

A host (ECU, data acquisition system) sends command messages to the Command ID to control the PMTrac electronics. Command messages are 8 Bytes long and have the following format:

Msg ID	Byte#						
Command	1	2	3	4	5	6	7
Msg ID	CMD	Parameters				RSVD	CSUM

CMD is the command ID.

Parameters are optional parameters that go with the selected command. If a parameter byte is unused it should be set to 00h.

RSVD is a reserved byte and must be 00h.

CSUM is an inverted checksum of CAN payload byte 1 (CMD) through CAN payload byte 7 (RSVD). The CAN protocol already includes basic packet error checking but this additional checking is used to prevent accidental activation of the 1000V or reprogramming of the configuration.

CSUM Example:

CMD = 10h (high voltage control)

First parameter byte = 01h (high voltage on)

Remaining parameter bytes = 00h 00h 00h 00h

RSVD = 00h

To calculate CSUM start byte adding the 7 bytes (maintaining an 1 byte result):

$10h + 01h + 00h + 00h + 00h + 00h + 00h = 11h$

Then invert the result:

$11h \text{ XOR } FFh = EEh$

CSUM = EEh for this command.

A.3 Available Commands

The following CMD values are supported:

CMD Value	Function
10h	High Voltage Control
11h	Heater Measurement Control
12h	Set Reporting Rate
A0h	Configure CAN ID

High Voltage Control (10h)

This command is used to turn the 1000V high voltage supply on and off.

BYTE	Value	Description
CMD	10h	High Voltage Control Command
Param1	State	00h = 1000V off, 01h = 1000V on
Param2	00h	
Param3	00h	
Param4	00h	
Param5	00h	

Default state is 1000V OFF.

Heater Measurement Control (11h)

The PMTrac electronics can periodically pulse the sensor heater on and off and measure the resulting current and voltage. From this, heater resistance can be calculated, giving an indirect indicator of sensor temperature at the heating element.

BYTE	Value	Description
CMD	11h	Heater Measurement Control Command
Param1	State	00h = measurement off, 01h = measurement on
Param2	00h	
Param3	00h	
Param4	00h	
Param5	00h	

Default state is heater measurement OFF.

Set Reporting Rate (12h)

While power is applied the PMTrac electronics periodically broadcast a Current Measurement message. The rate at which this message is reported can be configured using this command.

BYTE	Value	Description
CMD	12h	Set Reporting Rate Command
Param1	Rate	00h = 1 Hz, 01 = 10 Hz
Param2	00h	
Param3	00h	
Param4	00h	
Param5	00h	

Default rate is 1 Hz.

Configure CAN ID (A0h)

The PMTrac electronics uses up to 3 CAN IDs. The IDs can be configured with this message.

BYTE	Value	Description
CMD	A0	Configure CAN ID Command
Param1	ID_TYPE	Bits 4-7 specify the ID to change, bit 0 = 0 for STD, 1 for Extended ID 00h = Set Std command ID, 01h = Set Ext. command ID 10h = Set Std current ID, 11h = Set Ext. current ID 20h = Set Std heater ID, 21h = Set Ext. heater ID
Param2	NEW_ID	New ID as unsigned, 32 bit number (big endian)
Param3		
Param4		
Param5		

Default IDs are Command = 100h, Current = 110h, Heater = 120h

IMPORTANT NOTE:

Configure CAN ID command messages are a special case. Other commands can be sent as fast as the CAN bus can accept them, but CAN IDs are recorded in flash memory (so they persist between power cycles). When sending this command host controllers should either wait 500 mS (.5 seconds), or listen for the next current data message transmitted by the PMTrac electronics before sending any subsequent commands.

A.4 Current data message

Current data messages are sent continuously when power is applied to the PMTrac electronics. The rate can be set to 1 Hz or 10 Hz (default is 1 Hz). Current data messages also include basic status information and receiving them is an indication that the PMTrac electronics are ready to accept commands.

Msg ID	Byte #							
Current msg ID	1	2	3	4	5	6	7	8
	Flags	Particle current				HV value		FW Version

The fields in this message have the following usage

Flags Byte

The bits on the Flags Byte have the following meaning (where bit 0 is the least significant bit):

Bit #	Meaning	Values
7	High Voltage	0=off, 1=on
6	Heater Measurement	0=off, 1=on
5-1	Reserved	0
0	Current Reporting Rate	0=1Hz, 1=10Hz

Particle current

The average particle current over the selected reporting period (1 Hz or 10 Hz).

The value is an unsigned 32 bit integer, indicating pico amps, stored in big endian.

HV value

This is the High Voltage primary side (indirect) monitor reading. It is reported directly in ADC counts (12 bit ADC reading, reported as unsigned 16 bit integer, stored in big endian). The current version of PMTrac electronics starts with a 100 volt signal, through a 34:1 divider, then measure in 1 mV steps. So the expected signal is approximation 3000 max ('1000V') down to 0 ('0V').

FW Version

Bit #	Meaning	Possible Values
4-7	Major Version	0-15
0-3	Minor Version	0-15

A.5 Heater data message

Heater data messages are sent after heater measurement is turned on using a command message (see above). The update rate is fixed at 1 Hz.

Msg ID	Byte #							
Htr data msg ID	1	2	3	4	5	6	7	8
	Hoff voltage		Hon voltage		Heater current		Reserved	

The fields in this message have the following usage:

Hoff voltage

The voltage measured across the heater while it is unpowered.

This value is reported in mV, 16 bit unsigned integer, big endian.

Hon voltage

The voltage measured across the heater while it is very briefly pulsed on.

This value is reported in mV, 16 bit unsigned integer, big endian.

Heater current

The current measured through the heater during the Hon period. Hon Voltage / Heater current represents heater resistance at this time.

This value is reported in mA, 16 bit unsigned integer, big endian.

A.6 Discovery Messages

The following messages are intended to be used **only** when a single PMTrac electronics box is isolated on a dedicated CAN bus. They allow the unit's current CAN ID settings to be recovered. Both messages are similar to a standard command message, but are sent to dedicated CAN IDs.

Msg ID	Byte#							
Ext.	1	2	3	4	5	6	7	8
0xA5A5A5	CMD	Parameters					RSVD	CSUM

Discover ID Command (B0h)

This message is broadcast to discover a CAN ID from the PM Trac electronics. It **ONLY** works when broadcast to the extended CAN ID above.

BYTE	Value	Description
CMD	B0	Discover ID Command
Param1	ID	00h = Command, 10h = Current, 20h = Heater
Param2	DEh	Magic Word
Param3	ADh	
Param4	BEh	
Param5	EFh	

Discover ID Response (B1h)

This message is broadcast by PMTrac hardware in response to a Discover ID message (see above).

BYTE	Value	Description
CMD	B1	Discover ID Response
Param1	ID_EXT	Bits 7-4 designate ID being provided, bit 0 indicates if ID is extended mode 00h = Command Std, 01h = Command Ext 10h = Current Std, 11h = Current Ext 20h = Heater Std, 21h = Heater Ext
Param2	ID	The CAN identifier as a 32 bit, unsigned integer (big Endian)
Param3		
Param4		
Param5		