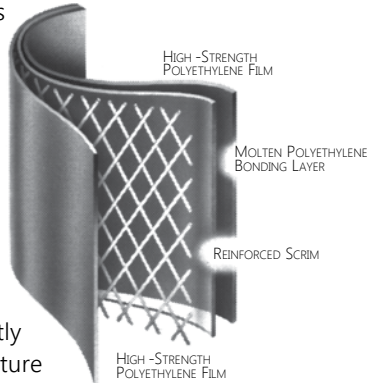


PRODUCT DESCRIPTION

DURA♦SKRIM® R12BV consists of two sheets of high-strength virgin polyethylene film laminated together with a third layer of molten polyethylene. The black outer layers contain carbon black to enhance outdoor life. A heavy-duty scrim reinforcement placed between these plies greatly enhances tear and puncture resistance and increases service life.



DURA♦SKRIM® R12BV is reinforced with a high strength scrim reinforcement laid in a diagonal pattern spaced 3/8" apart for uniform tear resistance in both machine and transverse directions with an additional machine direction scrim every 3" across the width for increased stability.

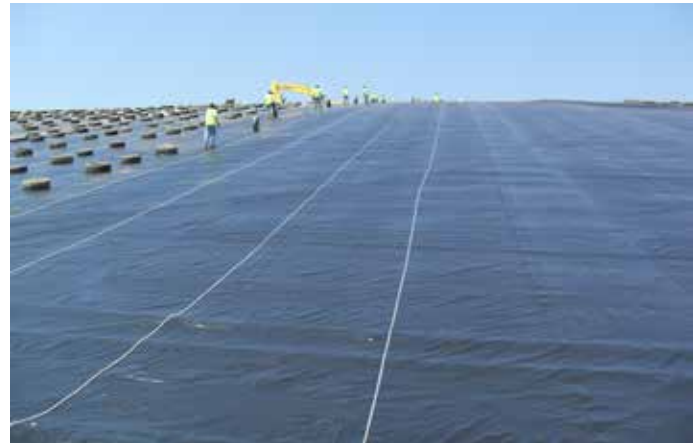
PRODUCT USE

DURA♦SKRIM® R12BV is used in more demanding applications requiring high tear resistance. It is designed to withstand longer term outdoor applications requiring up to 5 years of exposure or more depending upon geographical location.

DURA♦SKRIM® R12BV are designed to meet the requirements of the Geosynthetics Research Institute; GRI-GM22 Standard Specification.

SIZE & PACKAGING

DURA♦SKRIM® R12BV is available in a variety of widths and panels up to 120,000 square feet. All panels are manufactured in a quality controlled environment and are accordion folded and tightly rolled on a heavy-duty core for ease of handling and time-saving installation.



Temporary Rain Shed Cover

PRODUCT

PART

DURA♦SKRIM R12BV

APPLICATIONS

- | | |
|---------------------------|------------------------------|
| Daily Landfill Covers | Remediation Covers or Liners |
| Interim Landfill Covers | Cargo Coverings |
| Temporary Rainshed Covers | Outdoor Covers |

DURA♦SKRIM® R12BV

FOUR-LAYER REINFORCED EXTRUSION LAMINATE - MEETS GRI-GM22

		DURA♦SKRIM R12BV			
		IMPERIAL		METRIC	
PROPERTIES	TEST METHOD	MINIMUM	TYPICAL	MINIMUM	TYPICAL
APPEARANCE		Black/Black			
THICKNESS	ASTM D5199	10 Mil Average	12 Mil Nominal	0.25 mm Average	0.30 mm Nominal
WEIGHT	ASTM D751	53 lbs/MSF	57 lbs/MSF	259 g/m ²	278 g/m ²
CONSTRUCTION		Extrusion laminated with scrim reinforcement			
² GRAB TENSILE	ASTM D7004	80 lbs	100 lbs	356 N	445 N
² GRAB TENSILE ELONGATION	ASTM D7004	15 %	17 %	15 %	17 %
² 1" TENSILE STRENGTH	ASTM D7003	52 lbs/in	74 lbs/in	91 N/cm	130 N/cm
² ELONGATION AT FILM BREAK	ASTM D7003	100 %	600 %	100 %	600 %
³ TONGUE TEAR	ASTM D5884	40 lbs	46 lbs	178 N	205 N
CBR PUNCTURE RESISTANCE	ASTM D6241	220 lbs	265 lbs	979 N	1179 N
MULLEN BURST	ASTM D751	85 psi	100 psi	586 kPa	690 kPa
HIGH PRESSURE OIT	ASTM D5885	1000 min	2200 min	1000 min	2200 min
WVTR	ASTM E96	N/A	0.010 grains/ft ² •hr	N/A	0.167 g/m ² •day
PERM	ASTM E96	N/A	0.023 Perms	N/A	0.015 g/m ² •day•mm Hg
HYDRAULIC CONDUCTIVITY	ASTM E96	1.85x10 ⁻¹⁰ cm/sec			
UV RESISTANCE	GRI GM22	> 80% retained / no cracking			
MAXIMUM STATIC USE TEMPERATURE		180° F		82° C	
MINIMUM STATIC USE TEMPERATURE		-70° F		-57° C	

² Tests are an average of primary reinforcement directions.

³ Tests are an average of machine and transverse directions.



DURA♦SKRIM® R12BV consists of two sheets of high-strength virgin polyethylene film laminated together with a third layer of molten polyethylene. The black outer layers contain carbon black to enhance outdoor life. A heavy-duty scrim reinforcement placed between these plies greatly enhances tear and puncture resistance and increases service life. DURA♦SKRIM® R12BV is reinforced with a high strength scrim reinforcement laid in a diagonal pattern spaced 3/8" apart for uniform tear resistance in both machine and transverse directions with an additional machine direction scrim every 3" across the width for increased stability.



Scan QR Code to download current technical data sheets via the Raven website.

Note: To the best of our knowledge, unless otherwise stated, these are typical property values and are intended as guides only, not as specification limits. Chemical resistance, odor transmission, longevity as well as other performance criteria is not implied or given and actual testing must be performed for applicability in specific applications and/or conditions. RAVEN INDUSTRIES MAKES NO WARRANTIES AS TO THE FITNESS FOR A SPECIFIC USE OR MERCHANTABILITY OF PRODUCTS REFERRED TO, no guarantee of satisfactory results from reliance upon contained information or recommendations and disclaims all liability for resulting loss or damage. Limited Warranty available at www.RavenEFD.com

RAVEN ENGINEERED FILMS
P.O. Box 5107 Sioux Falls, SD 57117-5107
Ph: +1 (605) 335-0174 • TF: +1 (800) 635-3456

© 2017 RAVEN INDUSTRIES INC. All rights reserved.

efdsales@ravenind.com
www.ravenefd.com



062817 EFD 1505