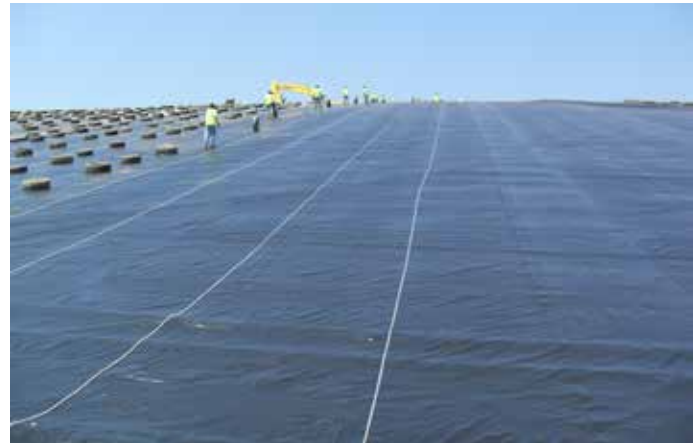
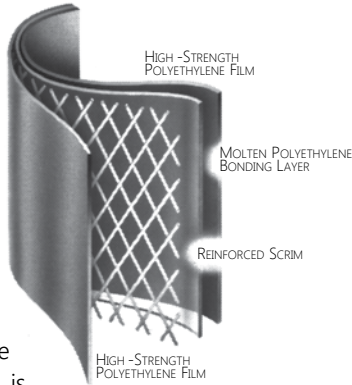


## PRODUCT DESCRIPTION

DURA♦SKRIM® R8BV consists of two sheets of high-strength virgin polyethylene film laminated together with a third layer of molten polyethylene. The black outer layers contain carbon black to enhance outdoor life. A heavy scrim reinforcement placed between these plies greatly enhances tear resistance and increases service life. DURA♦SKRIM® R8BV is reinforced with a high strength scrim reinforcement laid in a diagonal pattern spaced 3/8" apart for uniform tear resistance in both machine and transverse directions with an additional machine direction scrim every 3" across the width for increased stability.



Temporary Rain Shed Cover

## PRODUCT USE

DURA♦SKRIM® R8BV is used in more demanding applications requiring high tear resistance. It is designed to withstand longer term outdoor applications requiring up to 5 years of exposure or more depending upon geographical location.

DURA♦SKRIM® R8BV are designed to meet the requirements of the Geosynthetics Research Institute; GRI-GM22 Standard Specification.

## SIZE & PACKAGING

DURA♦SKRIM® R8BV is available in a variety of widths and panels up to 180,000 square feet. All panels are manufactured in a quality controlled environment and are accordion folded and tightly rolled on a heavy-duty core for ease of handling and time-saving installation.

## PRODUCT

## PART #

DURA♦SKRIM ..... R8BV

## APPLICATIONS

- |                           |                              |
|---------------------------|------------------------------|
| Daily Landfill Covers     | Remediation Covers or Liners |
| Interim Landfill Covers   | Cargo Coverings              |
| Temporary Rainshed Covers | Outdoor Covers               |



# DURA♦SKRIM® R8BV

FOUR-LAYER REINFORCED EXTRUSION LAMINATE - MEETS GRI-GM22

		DURA♦SKRIM R8BV			
		IMPERIAL		METRIC	
PROPERTIES	TEST METHOD	MINIMUM	TYPICAL	MINIMUM	TYPICAL
APPEARANCE		Black/Black			
THICKNESS	ASTM D5199	6.4 Mil Average	8 Mil Nominal	0.16 mm Average	0.20 mm Nominal
WEIGHT	ASTM D751	34 lbs/MSF	39 lbs/MSF	166 g/m <sup>2</sup>	190 g/m <sup>2</sup>
CONSTRUCTION		Extrusion laminated with scrim reinforcement			
<sup>2</sup> GRAB TENSILE	ASTM D7004	60 lbs	85 lbs	267 N	378 N
<sup>2</sup> GRAB TENSILE ELONGATION	ASTM D7004	15 %	17 %	15 %	17 %
<sup>2</sup> 1" TENSILE STRENGTH	ASTM D7003	50 lbs/in	70 lbs/in	88 N/cm	123 N/cm
<sup>2</sup> ELONGATION AT FILM BREAK	ASTM D7003	100 %	550 %	100 %	550 %
<sup>3</sup> TONGUE TEAR	ASTM D5884	20 lbs	35 lbs	89 N	156 N
CBR PUNCTURE RESISTANCE	ASTM D6241	160 lbs	210 lbs	712 N	934 N
MULLEN BURST	ASTM D751	65 psi	78 psi	448 kPa	538 kPa
HIGH PRESSURE OIT	ASTM D5885	1000 min	1600 min	1000 min	1600 min
WVTR	ASTM E96	N/A	0.016 grains/ft <sup>2</sup> •hr	N/A	0.268 g/m <sup>2</sup> •day
PERM	ASTM E96	N/A	0.039 Perms	N/A	0.026 g/m <sup>2</sup> •day•mm Hg
HYDRAULIC CONDUCTIVITY	ASTM E96	3.14x10 <sup>-10</sup> cm/sec			
UV RESISTANCE	GRI GM22	> 80% retained / no cracking			
MAXIMUM STATIC USE TEMPERATURE		180° F		82° C	
MINIMUM STATIC USE TEMPERATURE		-70° F		-57° C	

<sup>2</sup> Tests are an average of primary reinforcement directions.

<sup>3</sup> Tests are an average of machine and transverse directions.

DURA♦SKRIM® R8BV consists of two sheets of high-strength virgin polyethylene film laminated together with a third layer of molten polyethylene. The black outer layers contain carbon black to enhance outdoor life. A heavy scrim reinforcement placed between these plies greatly enhances tear resistance and increases service life. DURA♦SKRIM® R8BV is reinforced with a high strength scrim reinforcement laid in a diagonal pattern spaced 3/8" apart for uniform tear resistance in both machine and transverse directions with an additional machine direction scrim every 3" across the width for increased stability.

## DURA♦SKRIM®



Scan QR Code to download current technical data sheets via the Raven website.

Note: To the best of our knowledge, unless otherwise stated, these are typical property values and are intended as guides only, not as specification limits. Chemical resistance, odor transmission, longevity as well as other performance criteria is not implied or given and actual testing must be performed for applicability in specific applications and/or conditions. RAVEN INDUSTRIES MAKES NO WARRANTIES AS TO THE FITNESS FOR A SPECIFIC USE OR MERCHANTABILITY OF PRODUCTS REFERRED TO, no guarantee of satisfactory results from reliance upon contained information or recommendations and disclaims all liability for resulting loss or damage. Limited Warranty available at [www.RavenEFD.com](http://www.RavenEFD.com)

**RAVEN ENGINEERED FILMS**  
P.O. Box 5107 Sioux Falls, SD 57117-5107  
Ph: +1 (605) 335-0174 • TF: +1 (800) 635-3456

© 2017 RAVEN INDUSTRIES INC. All rights reserved.

[efdsales@ravenind.com](mailto:efdsales@ravenind.com)  
[www.ravenefd.com](http://www.ravenefd.com)



062817 EFD 1140