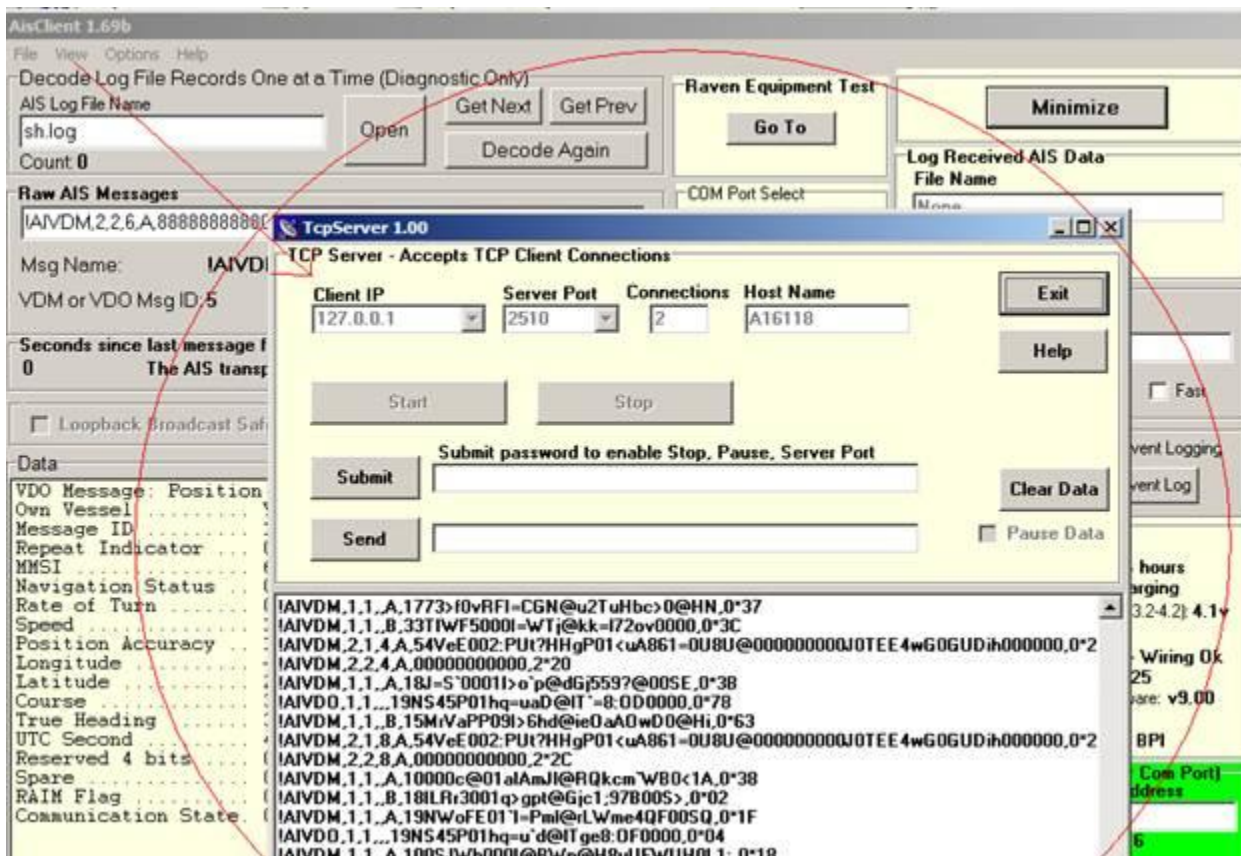


AisClient Recently enhanced to Serve AIS Data to Third-Party Charting Programs

AisClient has been recently enhanced to send the full AIS data stream from the AIS transponder to Capn Mosaic and Coastal Explorer via TCP connections.

The installer includes Aisclient 1.70b which contains a TCP server that serves data to TCP clients. Capn Mosaic and Coastal Explorer can both be configured as TCP clients. AisClient can serve AIS data to Capn Mosaic and Coastal Explorer simultaneously, if desired, but this might load down the laptop CPU. To see the TCP Server, go to the AisClient main screen and click on 'View | TCP Server'.



Capn Mosaic Operational Behavior

When Capn Mosaic is getting AIS data from the TCP connection, it will use the AIS own vessel position rather than the Raven Pilot System position. However, if Capn Mosaic is also getting Raven GPS data from SendClient, it will use the SendClient vessel static info and display the Raven GPS operational status in the Capn Mosaic title bar, even though it is using the AIS own vessel position. We would like Capn Mosaic to use the Raven GPS position whenever it is present, but we no longer have a development relationship with the Capn Mosaic since Dennis Mills sold out to MapTech. [See AisClient setting in next section that allows for the filtering out of AIS own vessel records when using Capn Mosaic.](#)

Configuration of Capn Mosaic

For Capn Voyager you must select the settings as indicated below. Technically, the MMSI value should be your own vessel, but **must not be 999999999** (I use 123456789, see below). Also, **you must check 'AIS | Display AIS Targets'**.

Note: Capn Mosaic release notes indicate that putting in own vessel MMSI will cause the behavior below, but that does not occur when the AIS data source is via TCP. So using 123456789 and leaving it seems the best way to handle this.

From Capn Mosaic release notes:

____ Version 8.2.0.5 - 25 August 2005

Added AIS MMSI number field to the AIS setup screen so that the ship's own AIS reports will not be processed by the Capn's AIS target display sub-system.

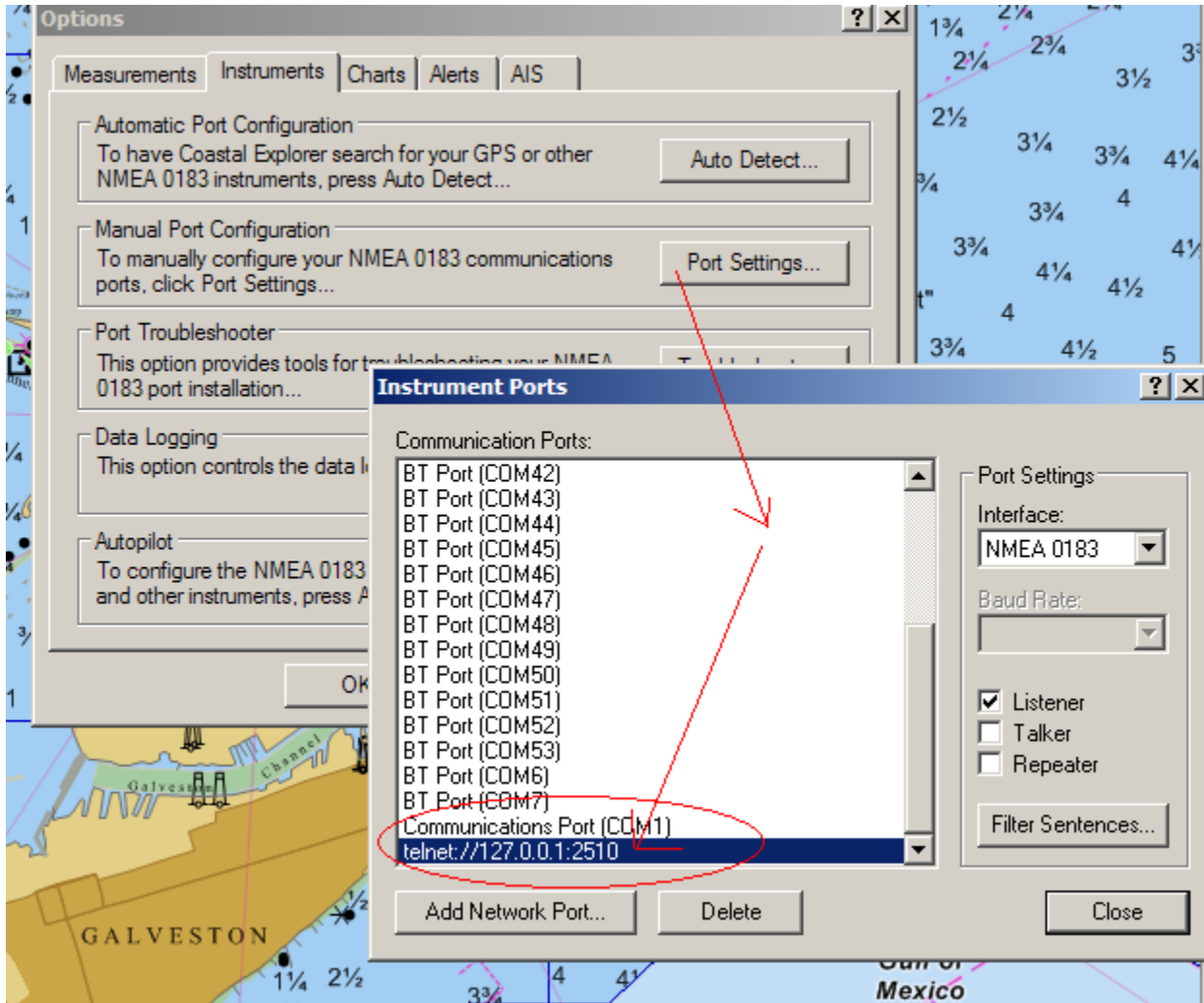
The screenshot shows the 'AIS Preferences' dialog box. The 'AIS Communication' section has 'Internet' selected as the 'Source for AIS Data Stream'. The 'Internet IP Address' is set to 127.0.0.1 and the 'Internet IP Port' is 2510. The 'Own Ship's MMSI Number' is set to 123456789. Other settings include 'No CPA calculation if target range >= (n.m.)' at 20.00, 'Don't show CPA if CPA is >= (n.m.)' at 2.000, 'Warn when CPA is less than (n.m.)' at 0.100, 'Target Idle Time in Minutes' at 30, 'Remove targets that are idle' checked, 'Display ship names if available' checked, 'Display ship COG/SOG if available' checked, 'If heading available, show Hdg arrows' checked, 'Show COG arrows for AIS targets' checked, 'Length of COG arrows based on speed & time' unchecked, 'COG arrow predicts position .. (minutes ahead)' at 6, 'Show tracks for AIS targets' checked, 'Max. track updates for an AIS target' at 50, 'Show anchored targets' checked, 'Show moored and docked targets' checked, 'Max. speed for moored/anchored' at 0.2, 'Chart scale at which the font is displayed in the selected point size when scaled text is checked.' at 1:40,000, 'Target Labels' with 'Font', 'Fore Color', 'Back Color', 'Scaled Text' unchecked, and 'Bottom' selected, and 'CPA Labels' with 'Font', 'Fore Color', 'Back Color', 'Scaled Text' unchecked, and 'Top' selected. The 'Save Changes' and 'Close' buttons are at the bottom.

Coastal Explorer Operational Behavior

Coastal Explorer only uses one vessel data source, either the TCP connection or a COM port. When Coastal Explorer is getting AIS data from the TCP connection, the own vessel position will be the AIS own vessel position.

Configuration of Coastal Explorer

Select 'Tools | Options | Instruments | Port Settings | Add Network Port...' and type in **127.0.0.1:2510**.



Filter Out AIS Own Vessel Records if Using Capn Mosaic

There is a checkbox on AisClient 1.70b that, when checked, excludes AIS own vessel records from the AIS data stream being sent to Capn Mosaic. This causes Capn Mosaic to use the GPS position coming from the Raven GPS receiver. If you change this setting in AisClient, you should restart Capn Mosaic to get Capn Mosaic to properly adapt to the presence or absence of AIS own vessel records. So if you are using your Raven DGPS system, check the box. If not, uncheck the box. AisClient will remember the state of the checkbox the next time it starts.

AisClient 1.70b

File View Options Help

Decode Log File Records One at a Time (Diagnostic Only)

AIS Log File Name: sh.log [Open] [Get Next] [Get Prev] [Decode Again]

Count: 0

Raw AIS Messages

Msg Name: IAVDO
VDM or VDO Msg ID: 1
AIS PPI Baud Rate: 38400

☒ Process AIS Class B Messages
☐ Pause

Raven Equipment Test

Go To

COM Port Select: 52

☒ Use BPI or Serial Port
☐ Use WPI or UDP Port

☒ Using Capn Mosaic
☒ Use Raven Position

Log Received AIS Data

File Name: None [Start Log]

Replay Log File

Log File: None [Start Replay] [Fast]

AIS Event Log

Event Count: None [View Event Log]

☐ Enable Event Logging

BPI (Bluetooth Pilot Interface)

Battery Parameters

Time to Empty: N/A - charging
Time to Full: 1092 Hr 15 Min
% Charged: 98 Volts (3.2-4.2): 4.1v

Other Parameters

Wiring State: Data Found - Wiring Ok
Address: 008098E97925
Firmware: v0.35 Hardware: v9.00
Checksum: 0x9780

☒ Dim the LEDs on the BPI

Comm Link (UDP Socket or Com Port)

Open Socket on this IP Address

192.168.10.100

Remote IP: 192.168.10.216

☐ Use Alternate Remote IP
☐ Use Alternate Local IP
☐ Enable Auto-Baud

Status: Opened COM52

Seconds since last message from transponder

0 The AIS transponder provides own vessel position info from it's internal GPS receiver.

☐ Loopback Broadcast Safety Message (diagnostic only) Own Vessel using RAIM: NO

Data

VDO Message: Position Report	VDM Message: Position Report
Own Vessel: Yes	Own Vessel: No
Message ID: 1	Message ID: 1
Repeat Indicator: 0	Repeat Indicator: 0
MMSI: 636011542	MMSI: 258972000
Navigation Status: 0	Navigation Status: 0
Rate of Turn: 0.0 d/m	Rate of Turn: 0.0 d/m
Speed: 10.4 k	Speed: 0.0 k
Position Accuracy: 1	Position Accuracy: 0
Longitude: -94.850966667 d	Longitude: -95.144116667 d
Latitude: 29.465183333 d	Latitude: 29.734800000 d
Course: 337.0	Course: 0.0
True Heading: 336	True Heading: 97
UTC Second: 20	UTC Second: 17
Reserved 4 bits: 0	Reserved 4 bits: 0
Spare: 0	Spare: 0
RAIM Flag: 0	RAIM Flag: 0
Communication State: 0	Communication State: 81987