

1. Contents in the Box

- BPI – Bluetooth Pilot Interface
- 6' AIS to BPI cable
- 6" AIS to BPI cable
- AC to USB International Adapter
- USB Type A to mini-B cable



2. Install Hardware

- On the Bluetooth Connection Manager, if you already have a Raven-BPI profile, right click on it and delete it.
- Turn the BPI On and refer to the LED status as mentioned in the adjacent column.
- On the bluetooth connection manager of your computer, scan and find a device named 'Raven-BPI' and connect to it.
- The default pass code is '12345'.



3. LED states

The BPI has 4 LED's with the following meanings:

Yellow LED - Charging

Solid.....battery is charging

Off.....battery is fully charged or external power via USB cable is not present.

Green LED – AIS Data

Flash Codes...3 – Receiving AIS data – Pilot plug is incorrectly wired or has wrong baud rate

2 – BPI is in loopback mode

1 – BPI searching for data on one of the various wire-pair combinations

Solid.....Receiving AIS data properly

Off.....BPI off or in standby

Notes:

1) If no AIS data is received for 10 seconds the BPI will begin scanning.

2) See BPI message, 'Query PPI state', to determine details of incorrect wiring or wrong baud rate.

Blue LED – Bluetooth

Flash Codes...3 – Initializing

2 – Waiting for pairing with host device

1 – Paired, but not connected

Solid.....Paired and connected

Off.....BPI off or in standby

Notes:

1) Users should wait for 2 blinks before attempting to pair the BPI over the bluetooth connection.

2) After cycling power on the BPI, the unit will go to 2 blinks, even if the device is paired. The attached computer will restore connection automatically from 2 blinks.

Red LED - Battery

Flash Codes..2 – Battery communications error

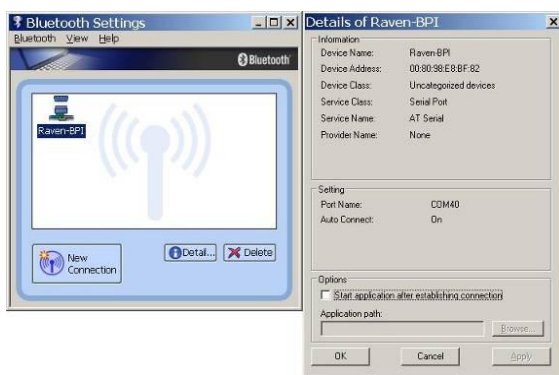
1 – Battery charge is low

Solid.....Battery charge has greater than 5 hours charge remaining

Off.....BPI is off or in standby

4. Set up

- Once you connect to the BPI, make note of the COM port number assigned to the BPI.
- Connect the 'AIS to BPI' cable with one end into the BPI and the other end going into an AIS data Source.
- Start your charting program, such as Raven WheelHouse II program and select the COM port assigned to the BPI for AIS data.



5. Charging

- You can charge the BPI by
 - Plugging the USB Type A to mini-B cable (fig(a)) into the laptop or

BPI Quick Start Guide

- Plugging the AC to USB mini-B cable (fig(b)) into an AC adapter
- Once fully charged (typically 1.5-2hrs) the rechargeable battery on the BPI supports 20+ hours of operation.
- If the Bluetooth link fails, the USB Type A to mini-B cable can be used to make a hard-wired connection.

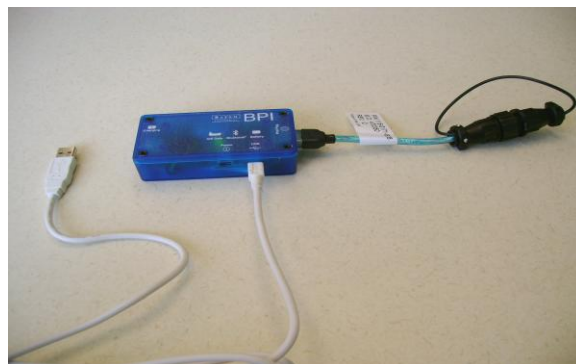


Fig (a)



Fig (b)

6. Contact Information

You have successfully finished installing the BPI. In case of Questions, Queries and Comments,

Raven Industries
14000 Summit Drive, Suite 700
Austin, TX – 78728

Voice: 1-(800) 460-2167 Option 4.

Fax : 512-238-1135

Email: MarineSupport@ravenind.com