

RAVEN

AEROSTAR

PARTS MANUAL^{*}

Gondola
Model "RW"
P/N 14530

February 1, 2012

**Parts subject to availability; please contact Aerostar for parts availability and prices.*

PART NUMBER	DESCRIPTION	UNITS
11127 - 8	STRAP, RW H-20	OBSOLETE
11127 - 9	STRAP, RW H-20 W/BUCKLE	OBSOLETE
12575	BRACE, RW	OBSOLETE
12576	SUPPORT TUBE ASSY RW	OBSOLETE
14364	HANDLE, GONDOLA	EA.
14418 - 1	COVER, SUEDE LEATHER FLAP SUPPORT TUBE RW	OBSOLETE
14418 - 2	COVER, SMOOTH LEATHER FLAP SUPPORT TUBE RW	OBSOLETE
14419 - 1	COVER, SUEDE LEATHER SUPPORT TUBE RW	OBSOLETE
14419 - 2	COVER, SMOOTH LEATHER SUPPORT TUBE RW	OBSOLETE
14532	FRAME, LOWER RW	OBSOLETE
14684	FRAME, CORNER RW	OBSOLETE
14971 - 3	SPRING, EXTENSION LEE LE-069F-6S	EA.
16474	EYEBOLT, SLOTTED	EA.
50000 - 7	RW FLOOR STIFFENER	OBSOLETE
50000 - 8	SKID, SUBSTRATE, SHORT, RW	OBSOLETE
50000 - 9	SKID, SUBSTRATE, LONG, RW	OBSOLETE
50000 - 10	SKID, LONG, RW	OBSOLETE
50000 - 11	SKID, SHORT, RW	OBSOLETE
51003 - 1	FOAM, THERMAL CELL NOMACO C78A	OBSOLETE
51006 - 3	BROWN LACING	FT.
51007 - 1	ROPE, 5/16 BADGER 3 STRAND TAN POLY	FT.
51007 - 2	WICKER, 18-MM ROUND REED	LB.
51007 - 3	WICKER, 9-10 MM NATURAL KOOBOO RATAN	LB.
51007 - 4	WICKER, 4-7 MM NATURAL KOOBOO RATAN	LB.
51011 - 19	QUICK RELEASE PIN BLS3B168	EA.
51012 - 5	POP RIVET AD42BS	EA.
51013 - 3	BOLT, AIRCRAFT AN3-15A	EA.
51013 - 4	BOLT, AIRCRAFT AN3-14A	EA.
51013 - 40	SCREW, 10-32 X 1 1/2 HEX HEAD SS	EA.
51013 - 81	AIRCRAFT BOLT AN4-24A	EA.
51015 - 1	NUT, MS20365-1032A 10-32	EA.
51015 - 17	NUT, MS20365-428C 1/4-28	EA.
51015 - 20	NUT, HEX 1/4-20	OBSOLETE
51016 - 5	RIVNUT, 10-32	OBSOLETE
51017 - 2	WASHER, 1/4 PLN PLATED STL	EA.
51017 - 6	WASHER, #10 LARGE, AN970-3	OBSOLETE
51017 - 7	WASHER, #8	OBSOLETE
51017 - 15	WASHER, SS MS15795-841	EA.
51017 - 18	WASHER, 5/16 CAD PLATED	EA.
51019 - 1	U-BOLT, 3/8 X 2 X 2 SPECIAL	EA.
51019 - 3	BOLT, CARRIAGE 1/4-20 X 2	EA.
51031 - 11	CLAMP, HOSE SUPPORT (DOUBLE)	OBSOLETE
51093 - 1	BAG, ACCESSORY SUEDE	OBSOLETE
51093 - 2	BAG, ACCESSORY SMOOTH	OBSOLETE
51093 - 3	BAG, ACCESSORY CORDURA	OBSOLETE
51115	TIE WRAP WITH SNAP	OBSOLETE
51130 - 35	COVER, SMOOTH LEATHER RW UPRIGHTS COMPLETE	OBSOLETE
51132 - 5	COVER, SIDE RAIL, RW, SUEDE	OBSOLETE
51132 - 6	COVER, SIDE RAIL, RW, CORDURA	OBSOLETE
51132 - 24	COVER, SIDE RAIL, RW, SMOOTH	OBSOLETE
52161	RETAINER TAB ONLY	EA.
52163	QUICK RELEASE PIN WITH RETAINER	EA.
52249	FIRE EXTINGUISHER POUCH	OBSOLETE
52287	STRAP ASSEMBLY, 10 GAL TANK	EA.
52406 - 1	SKID GUARD, POLY LONG RW	EA.
52406 - 2	SKID GUARD, POLY SHORT RW	EA.

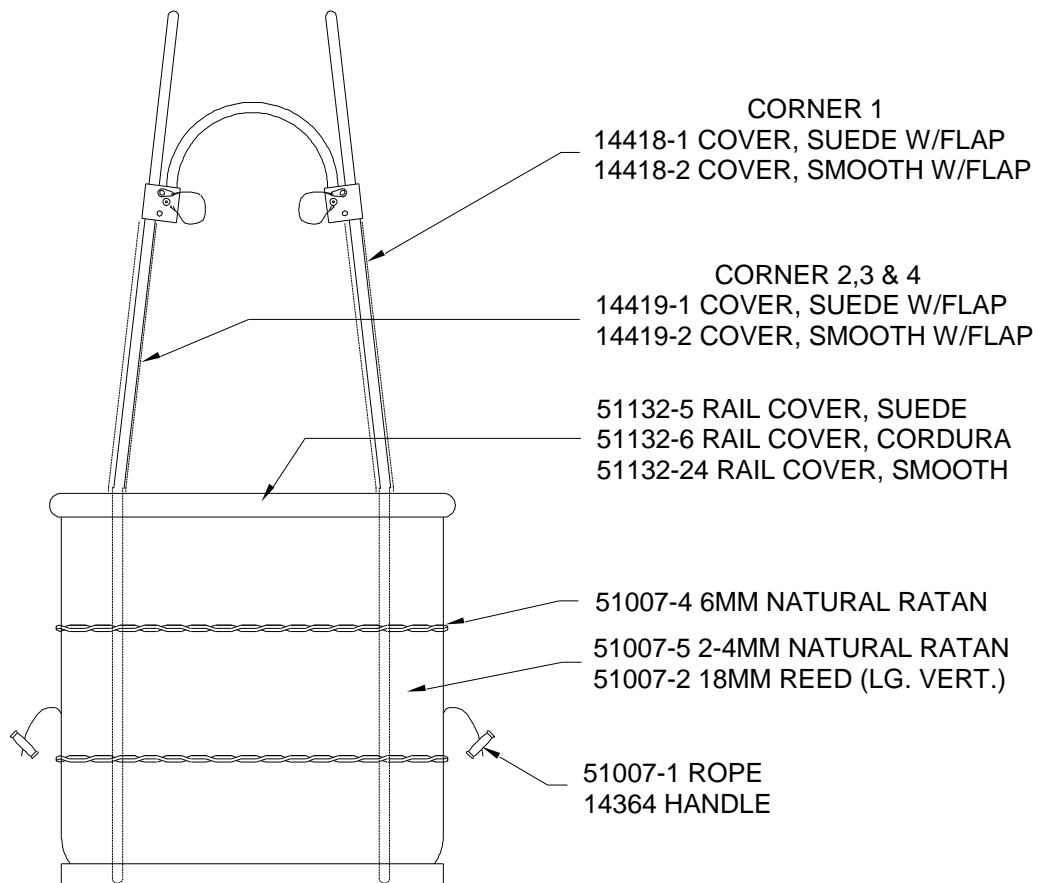


Figure RW1

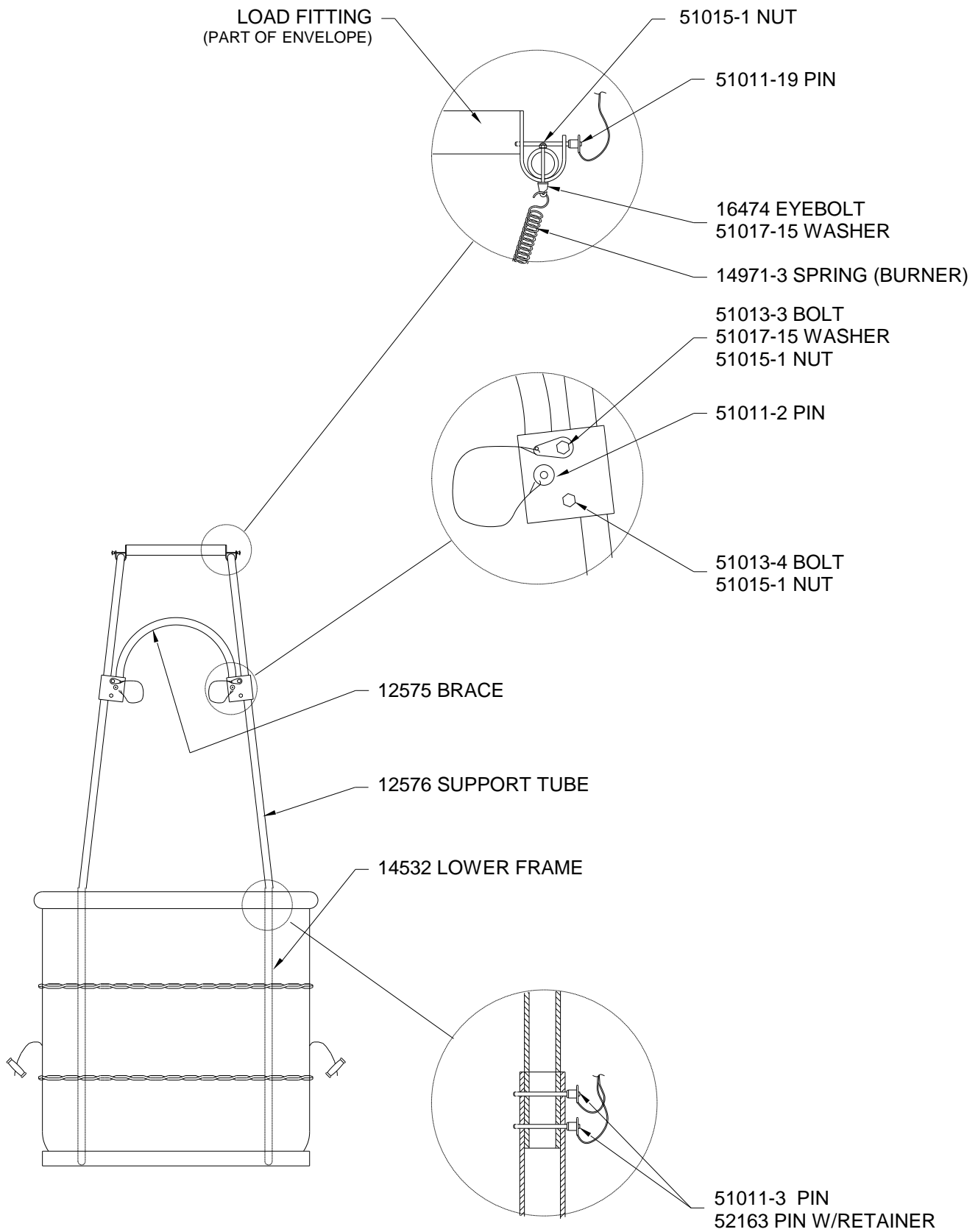


Figure RW2

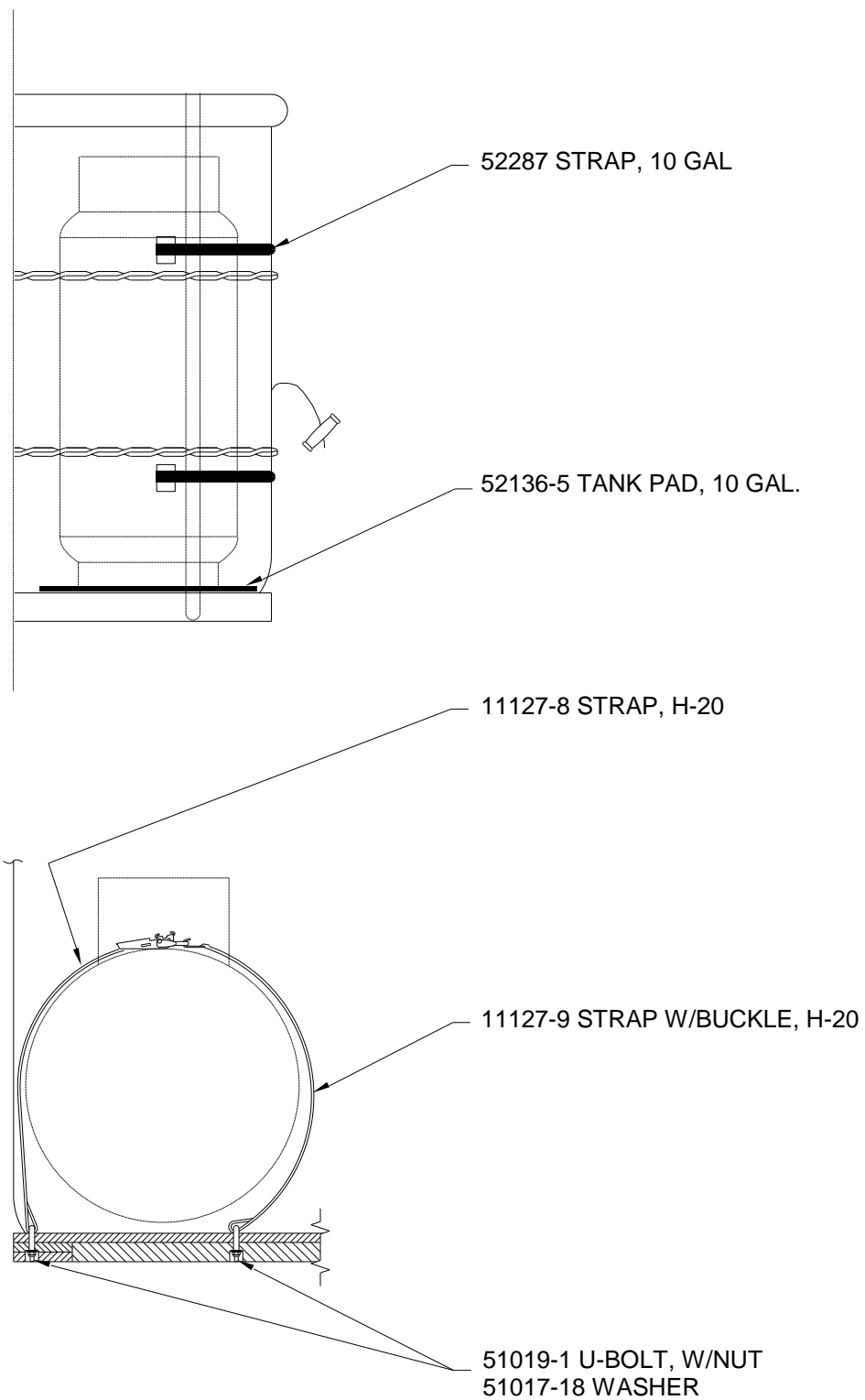


Figure RW3

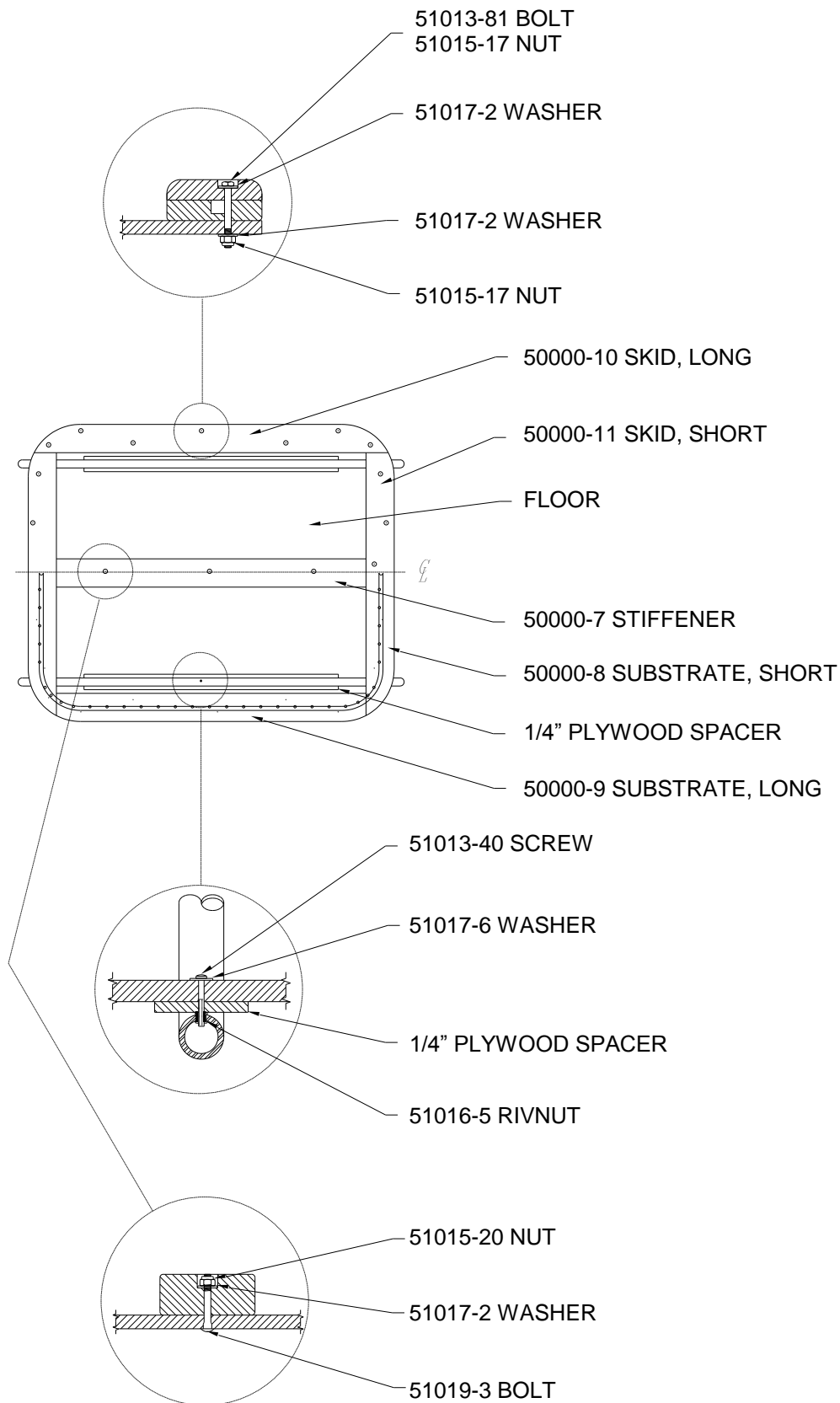


Figure RW4