

# RAVEN

## AEROSTAR

### **PARTS MANUAL**

Classic X Gondola

Model "RB8"

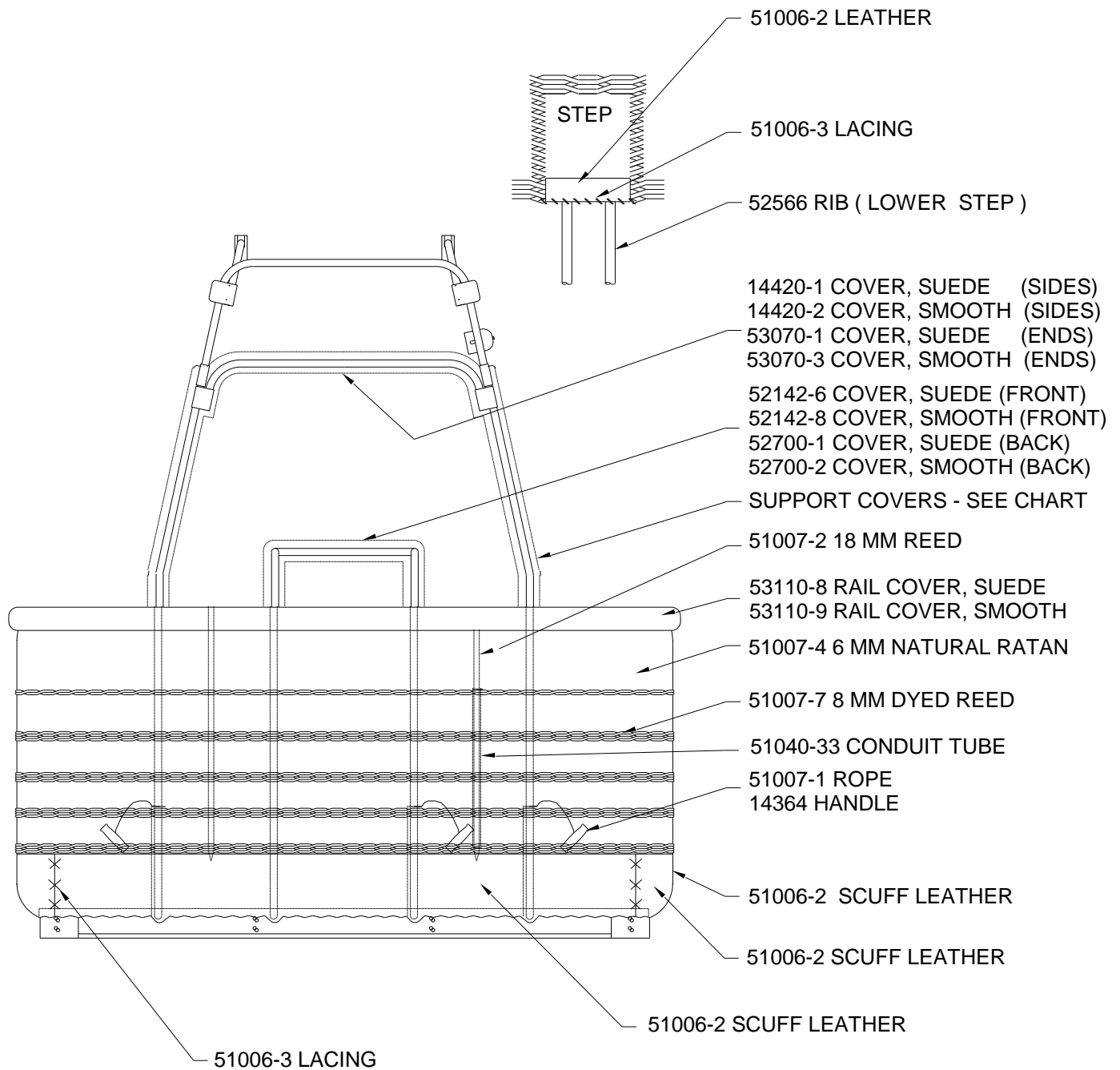
P/N 52430

February 1, 2012

PART NUMBER		DESCRIPTION	UNITS
14364		HANDLE, GONDOLA	EA.
14420	- 1	COVER, SUEDE LEATHER SIDE FRAME	OBSOLETE
14420	- 2	COVER, SMOOTH LEATHER SIDE FRAME	OBSOLETE
14571		STRAP ASSY TANK V15 / V18	EA.
51003	- 1	FOAM, THERMAL CELL NOMACO C78A	OBSOLETE
51003	- 7	TUBING, POLY ACCENTS (100 FT. ROLLS)	FT.
51003	- 55	FOAM, 3W301 3/4 X 1 3/8	OBSOLETE
51003	- 61	FOAM, 3W307 3/4 X 1 3/8	OBSOLETE
51003	- 81	BOOT, RUBBER	EA.
51003	- 82	BARB CONNECTOR FOR POLY WICKER	EA.
51006	- 2	LEATHER, MOCCASIN COWHIDE	OBSOLETE
51006	- 3	BROWN LACING	FT.
51007	- 1	ROPE, 5/16 BADGER 3 STRAND TAN POLY	FT.
51007	- 2	WICKER, 18-MM ROUND REED	LB.
51007	- 3	WICKER, 9-10 MM NATURAL KOOBOO RATAN	LB.
51007	- 4	WICKER, 4-7 MM NATURAL KOOBOO RATAN	LB.
51007	- 17	NYLON LACING, #381 TASLN, ST/684 BLACK/BROWN	FT.
51007	- 18	ROPE, 1/2 " BLACK, INSIDE HANDLE	EA.
51012	- 3	POP RIVET AD 48BS	EA.
51013	- 1	BOLT, AIRCRAFT AN3-12A	EA.
51013	- 4	BOLT, AIRCRAFT AN3-14A	EA.
51013	- 17	BOLT, AIRCRAFT AN4-15A	EA.
51013	- 24	BOLT, AIRCRAFT AN4-21A	EA.
51013	- 25	BOLT, AIRCRAFT AN4-22A	EA.
51013	- 59	BOLT, AIRCRAFT BOLT AN3-16A	EA.
51013	- 83	BOLT, AIRCRAFT AN3-17A	EA.
51013	- 95	BOLT, 1/4-28 GRADE 8	EA.
51014	- 21	SCREW, FLAT END SET 3/8-16 X 5/8	EA.
51014	- 29	SCREW, WOOD FLAT HEAD SQUARE DRIVE #12 X 2"	EA.
51015	- 1	NUT, MS20365-1032A 10-32	EA.
51015	- 2	NUT, 10-32 CAPNUT ESAN 22 NKM2	EA.
51015	- 10	NUT, LOCKING MS20365-428A	EA.
51015	- 37	NUT, LOCKING 5/16-18 ESNA	EA.
51017	- 1	WASHER, 1/4 PLN AN960-C416	EA.
51017	- 2	WASHER, 1/4 PLN PLATED STL	EA.
51017	- 4	WASHER, POP RIVET 1/8	EA.
51017	- 18	WASHER, 5/16 CAD PLATED	EA.
51017	- 32	WASHER, FENDER 1.75O.D. X 1/4 I.D.	EA.
51019	- 38	BOLT, CARRIAGE 5/16-18 X 2 1/2 SS	EA.
51037	- 7	SLEEVE, 3/32 OVAL COPPER 5005-3	EA.
51037	- 15	CABLE, 1/16 RED PVC	FT.
51038	- 5	FIRE EXTINGUISHER	OBSOLETE
51040	- 33	TUBE, 3/4 ELECTRICAL METALLIC TUBING	EA.
51054	- 49	SAFETY WALK, 2"	FT.
51079	- 2	SIDE FRAME, RB6, RB8	EA.
51080	- 4	SUPPORT TUBE, RB6, RB8, RB12	EA.
51082		BURNER FITTING ASSEMBLY 4 PT	EA.
51082	- 2	BURNER SUPPORT INSERT, ADJUSTMENT BLOCK	EA.
51082	- 3	BURNER SUPPORT, INSERT, COMPRESSION SPACER	EA.
51086	- 2	LOWER FRAME, RB6	EA.
51093	- 1	BAG, ACCESSORY SUEDE	OBSOLETE
51093	- 2	BAG, ACCESSORY SMOOTH	OBSOLETE
51093	- 3	BAG, ACCESSORY CORDURA	OBSOLETE
51100		SIDE FRAME, LOWER RB	EA.
51113	- 1	COVER, SMOOTH LEATHER RB SUPPORT TUBE	OBSOLETE
51113	- 2	COVER, SMOOTH LEATHER RB SUPPORT TUBE	OBSOLETE

PART NUMBER	DESCRIPTION	UNITS
51114 - 1	COVER, SMOOTH LEATHER RB SUPPORT TUBE W/FLAP	OBSOLETE
51114 - 3	COVER, SMOOTH LEATHER SUPPORT TUBE RB W/FLAP	OBSOLETE
51497	FRAME, TOP BASKET RB8	EA.
51518 - 5	CONNECTOR PIN RB	EA.
52120 - 1	QUICK RELEASE PIN AVIBANK 55964	EA.
52142 - 6	COVER, SUEDE LEATHER RB TANK TOP FRAME RB6	OBSOLETE
52142 - 7	COVER, SUEDE LEATHER RB8/12	OBSOLETE
52142 - 9	COVER, SMOOTH LEATHER TANK FRAME SHORT RB8/12	OBSOLETE
52145	STEP STIFFENER, LOWER	EA.
52163	QUICK RELEASE PIN WITH RETAINER	EA.
52174	TOOL POUCH	OBSOLETE
52249	FIRE EXTINGUISHER POUCH	OBSOLETE
52315	BRACKET, SKID INNER	EA.
52321	END FRAME RB	EA.
52427	TANK ASSEMBLY, V-23 SINGLE SERVICE	OBSOLETE
52438	TANK SUPPORT, RB6, RB8	EA.
52458 - 1	COVER, SUEDE LEATHER SUPPORT TUBE RB #4	OBSOLETE
52458 - 2	COVER, SUEDE LEATHER SUPPORT TUBE RB #3	OBSOLETE
52458 - 3	COVER, SMOOTH LEATHER SUPPORT TUBE RB #4	OBSOLETE
52458 - 4	COVER, SMOOTH LEATHER SUPPORT TUBE RB #3	OBSOLETE
52459 - 1	COVER, SUEDE LEATHER SUPPORT TUBE RB #1 W/FLAP	OBSOLETE
52459 - 2	COVER, SUEDE LEATHER SUPPORT TUBE RB #2 W/FLAP	OBSOLETE
52459 - 3	COVER, SMOOTH LEATHER SUPPORT TUBE RB #1 W/FLAP	OBSOLETE
52459 - 4	COVER, SMOOTH LEATHER SUPPORT TUBE RB #2 W/FLAP	OBSOLETE
52479	FIRE EXTINGUISHER	OBSOLETE
52497	FRAME, TOP BASKET RB8	EA.
52499	TAB, REINFORCEMENT	EA.
52500	FRAME, RB6 TANK TOP	EA.
52501 - 1	TUBE CONNECTOR, RB 90 DEG.	EA.
52501 - 2	TUBE CONNECTOR, RB 12 DEG.	EA.
52503 - 1	DIVIDER FRAME UPPER TUBES, RB8, 47.7 IN	EA.
52503 - 2	DIVIDER FRAME UPPER TUBES, RB8, 30.75 IN	EA.
52503 - 3	DIVIDER FRAME UPPER TUBES, RB8	EA.
52505	SKID, LONG FRONT RB8, RB12	EA.
52506	FLOOR, RB8	EA.
52510	PLATFORM, PILOT RB8	EA.
52511	SKID, SHORT RB	EA.
52512	SKID, CENTER RB	EA.
52514	SKID, LONG BACK RB8, RB12	EA.
52515 - 1	RB8 PARTITION HALF ASSEMBLY	OBSOLETE
52516	SKID GUARD, POLY, RB CENTER	EA.
52518	PLATFORM SUPPORT RB8	EA.
52522 - 1	U BRACKET, 5/16 IN HOLE	EA.
52522 - 2	U BRACKET, 3/16 IN HOLE	EA.
52523 - 1	DIVIDER, LOWER TUBES RB8 27 IN	EA.
52523 - 2	DIVIDER, LOWER TUBES RB8 43 IN	EA.
52525	SKID GUARD, POLY LONG SIDE RB8	EA.
52526	STRAP, TANK V23	EA.
52527	SKID GUARD, POLY SHORT SIDE RB	EA.
52566	RIB, STIFFENER RB	EA.
52700 - 1	COVER, TANK TOPFRAME SHORT RB8, RB12 (SUEDE)	OBSOLETE
52700 - 2	COVER, TANK TOPFRAME SHORT RB8, RB12 (SMOOTH)	OBSOLETE
52701 - 1	KNEE PAD, RB8 BACKSIDE CORNER 3	OBSOLETE
52701 - 2	KNEE PAD, RB8 BACKSIDE CORNER 4	OBSOLETE
52702 - 1	KNEE PAD, RB8 FRONTSIDE CORNER 1	OBSOLETE
52702 - 2	KNEE PAD, RB8 FRONTSIDE CORNER 2	OBSOLETE

PART NUMBER	DESCRIPTION	UNITS
52929	FRAME, TANK, SHORT RB8, RB12	EA.
52987	BRACKET, OUTER POLY SKID	EA.
53019	WASHER, 3 IN ALUMINUM	EA.
53034 - 1	OVERSLEEVE, RB	EA.
53034 - 2	OVERSLEEVE, RB	EA.
53070 - 1	COVER, SUEDE LEATHER END FRAME, RB6, RB8	OBSOLETE
53070 - 3	COVER, SMOOTH LEATHER END FRAME, RB6, RB8	OBSOLETE
53093	SPACER, COLLAR RB	EA.
53097 - 1	BURNER SUPPORT FITTING, SLOTTED	EA.
53105	PIN, WIRE LOCK, S.S. W/LANYARD (STAMPED "S")	EA.



SUPPORT TUBE COVERS	CORNER 1 (with Flap)	CORNER 2	CORNER 3 (with Flap)	CORNER 4
SUEDE LEATHER	52459-1	52459-2	52458-2	52458-1
SMOOTH LEATHER	52459-3	52459-4	52458-4	52458-3

Figure RB8-1

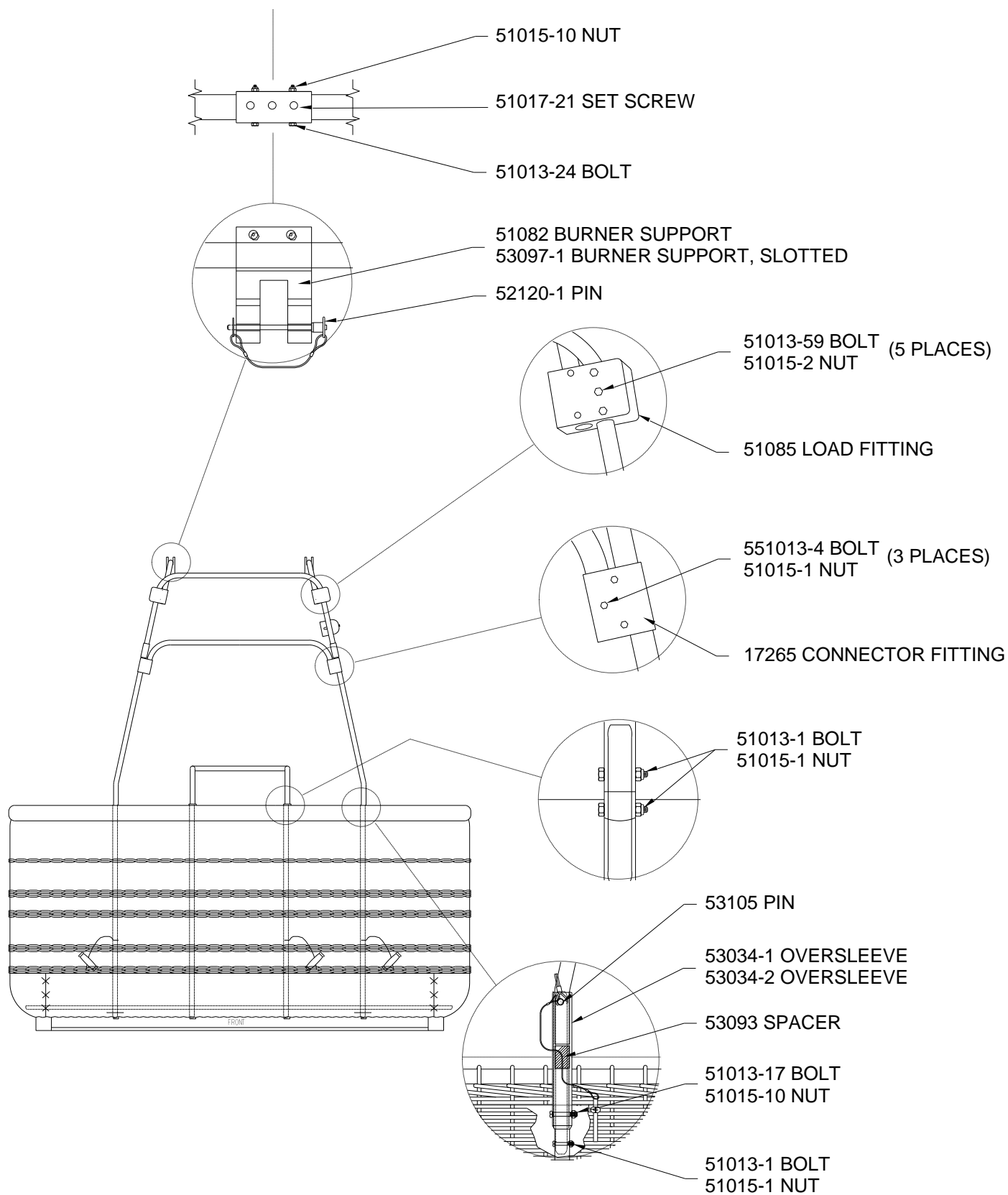


Figure RB8-2

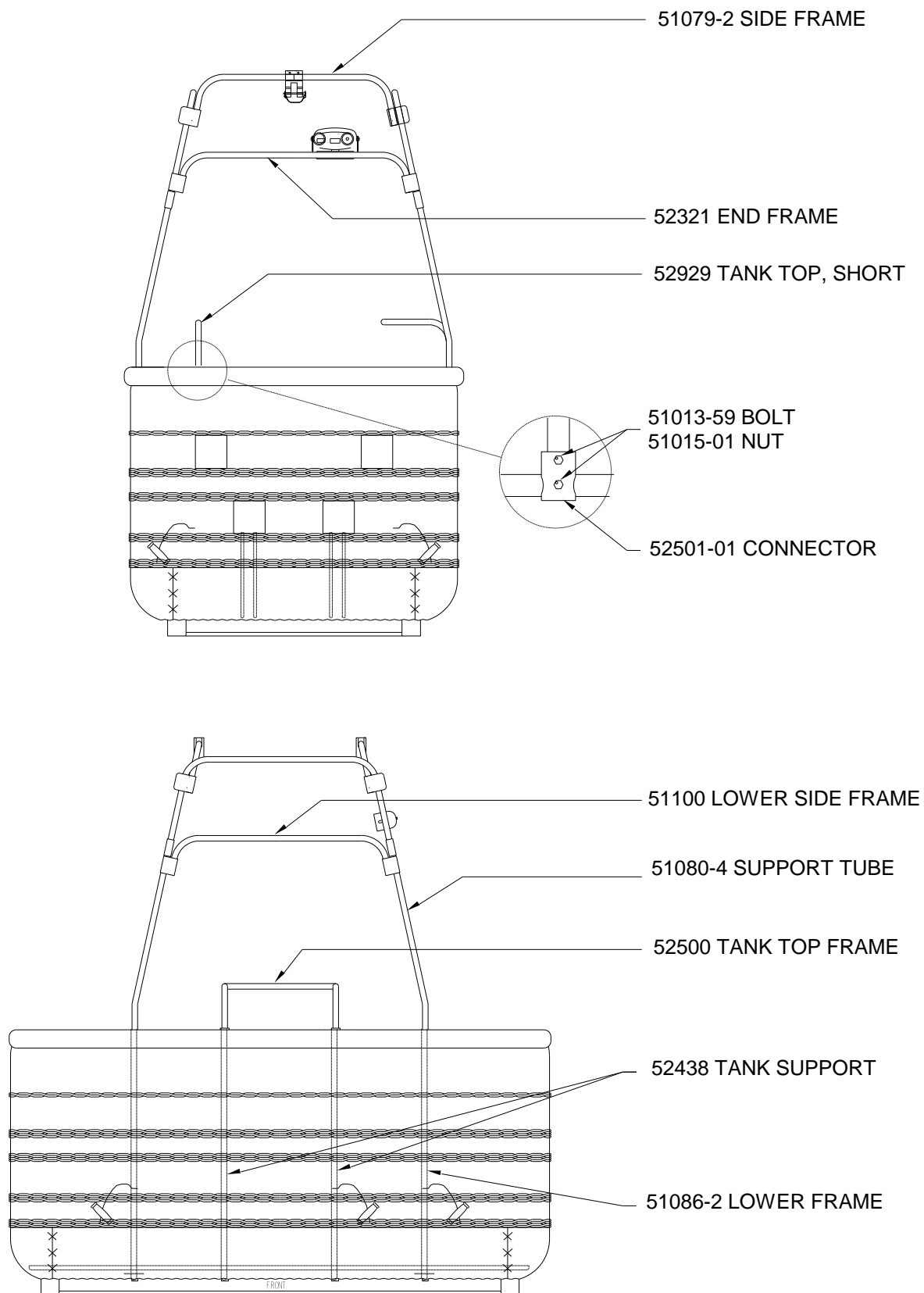


Figure RB8-3

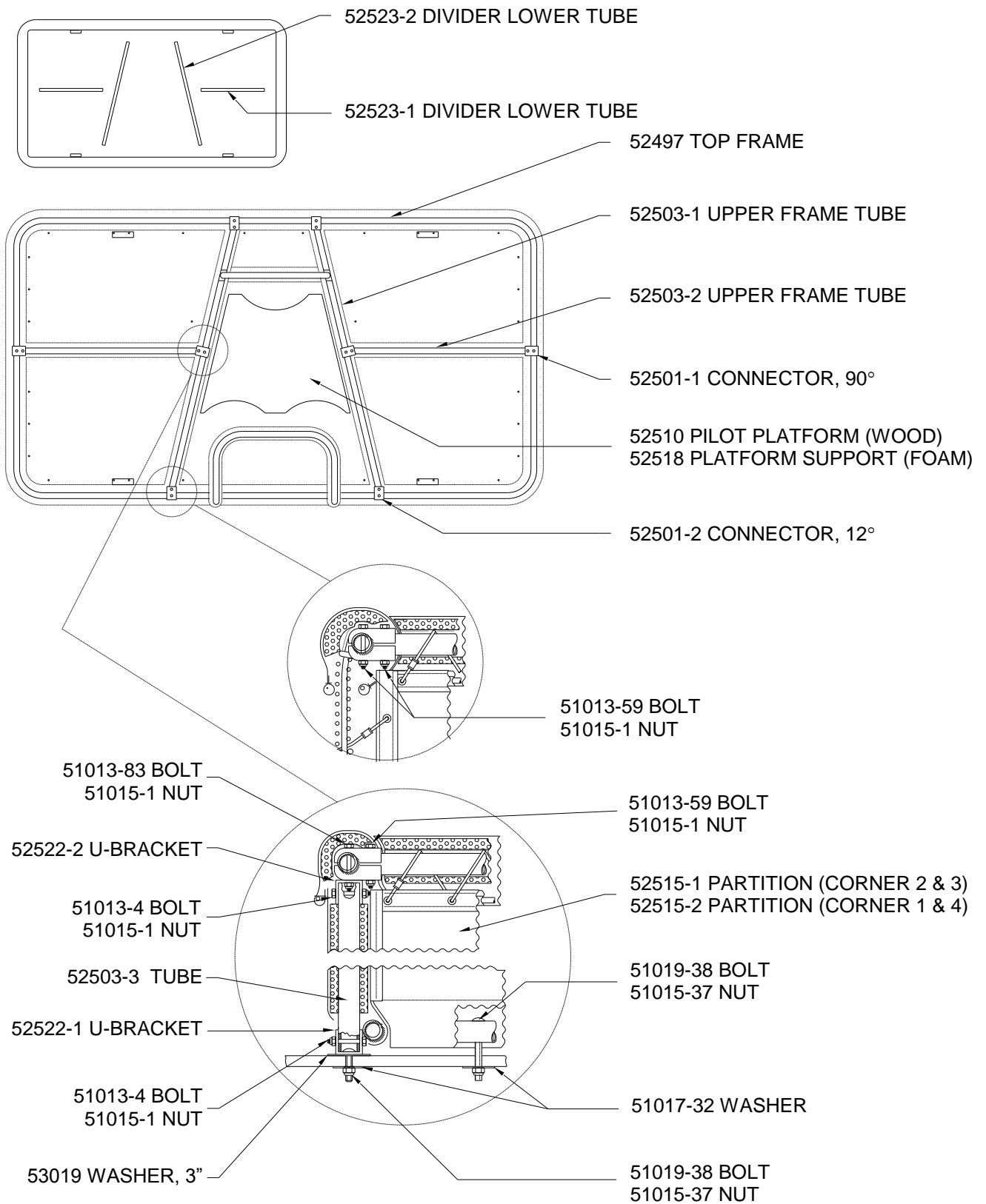


Figure RB8-4

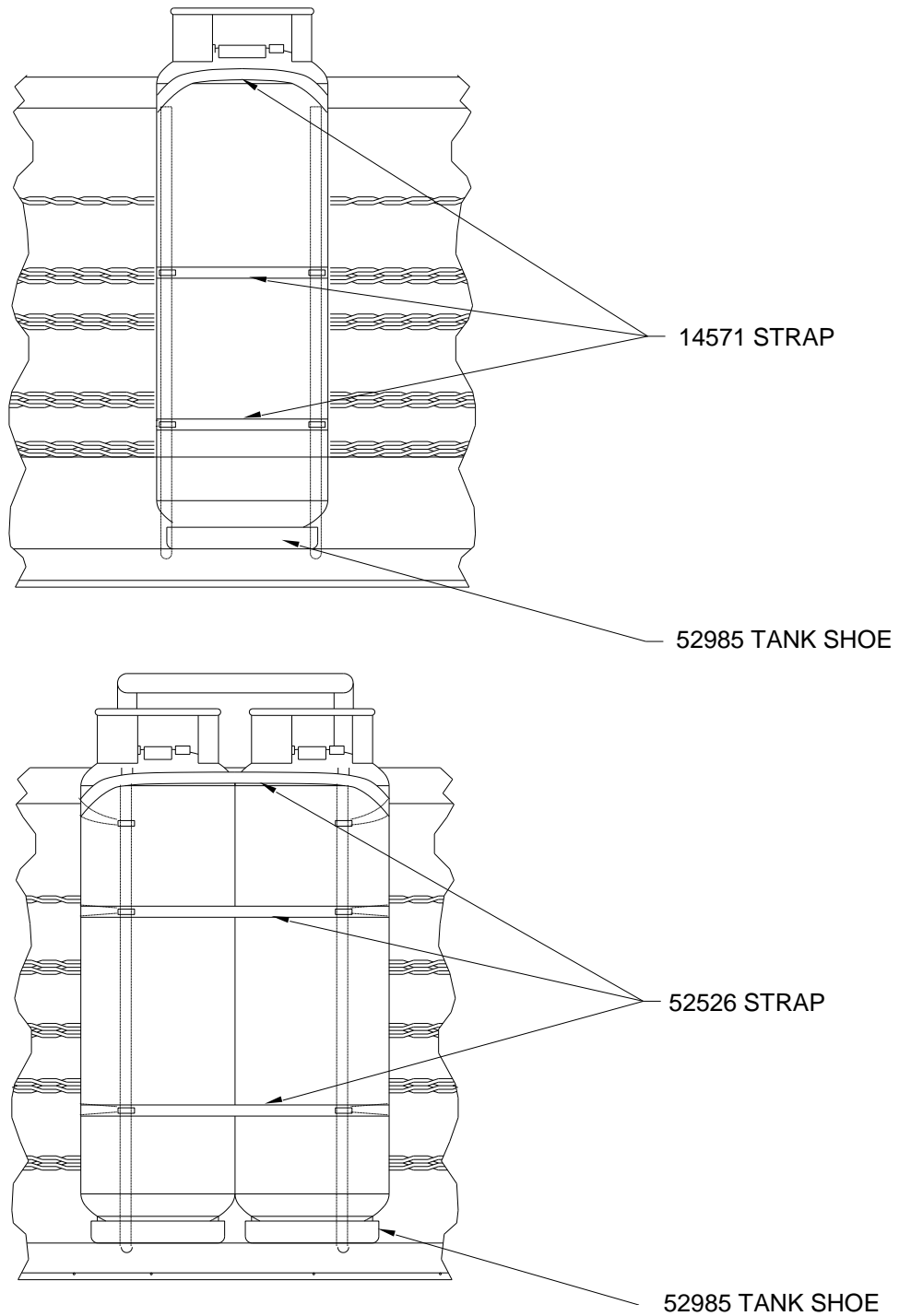


Figure RB8-5

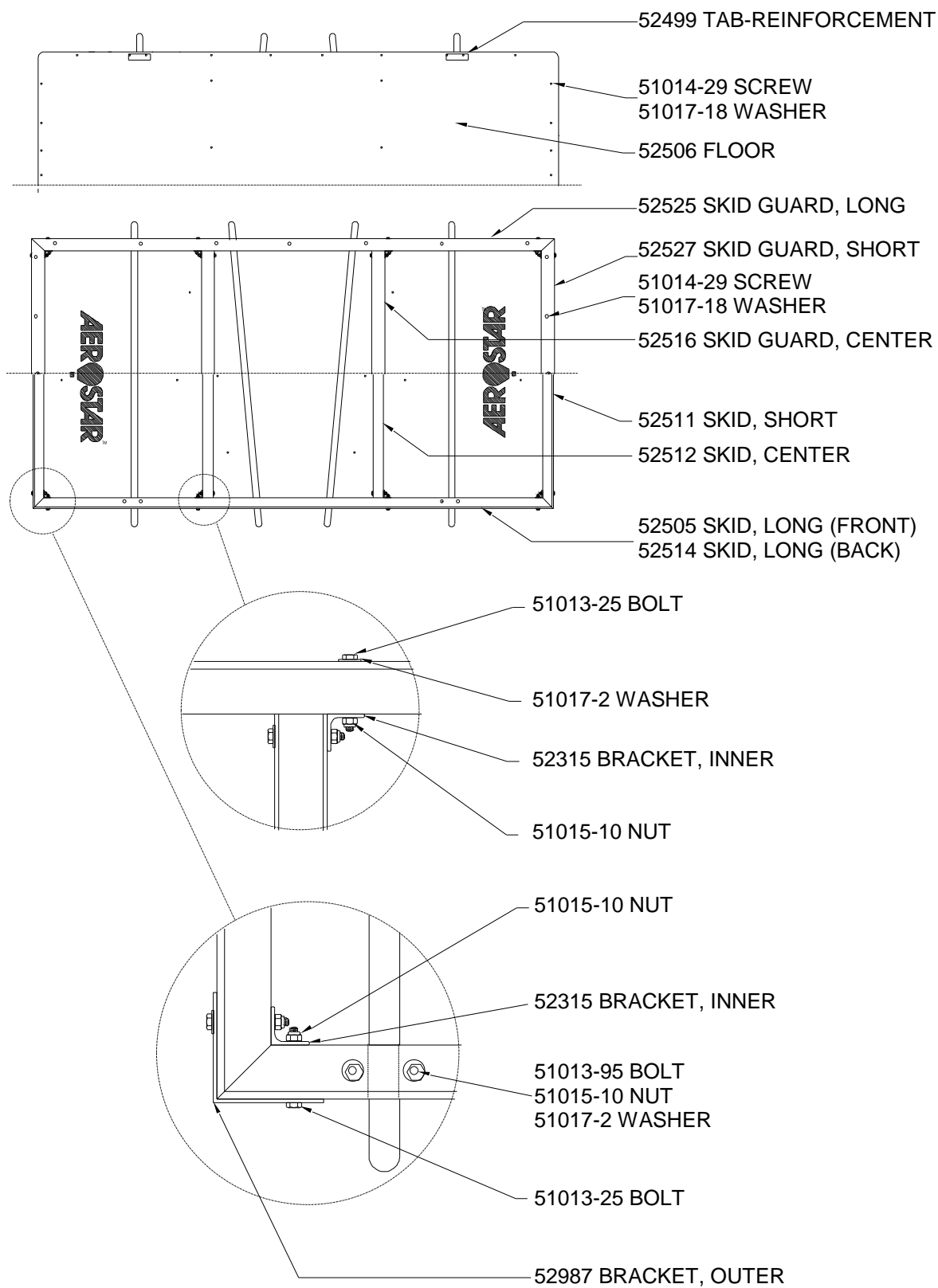


Figure RB8-6