

RAVEN

AEROSTAR

PARTS MANUAL

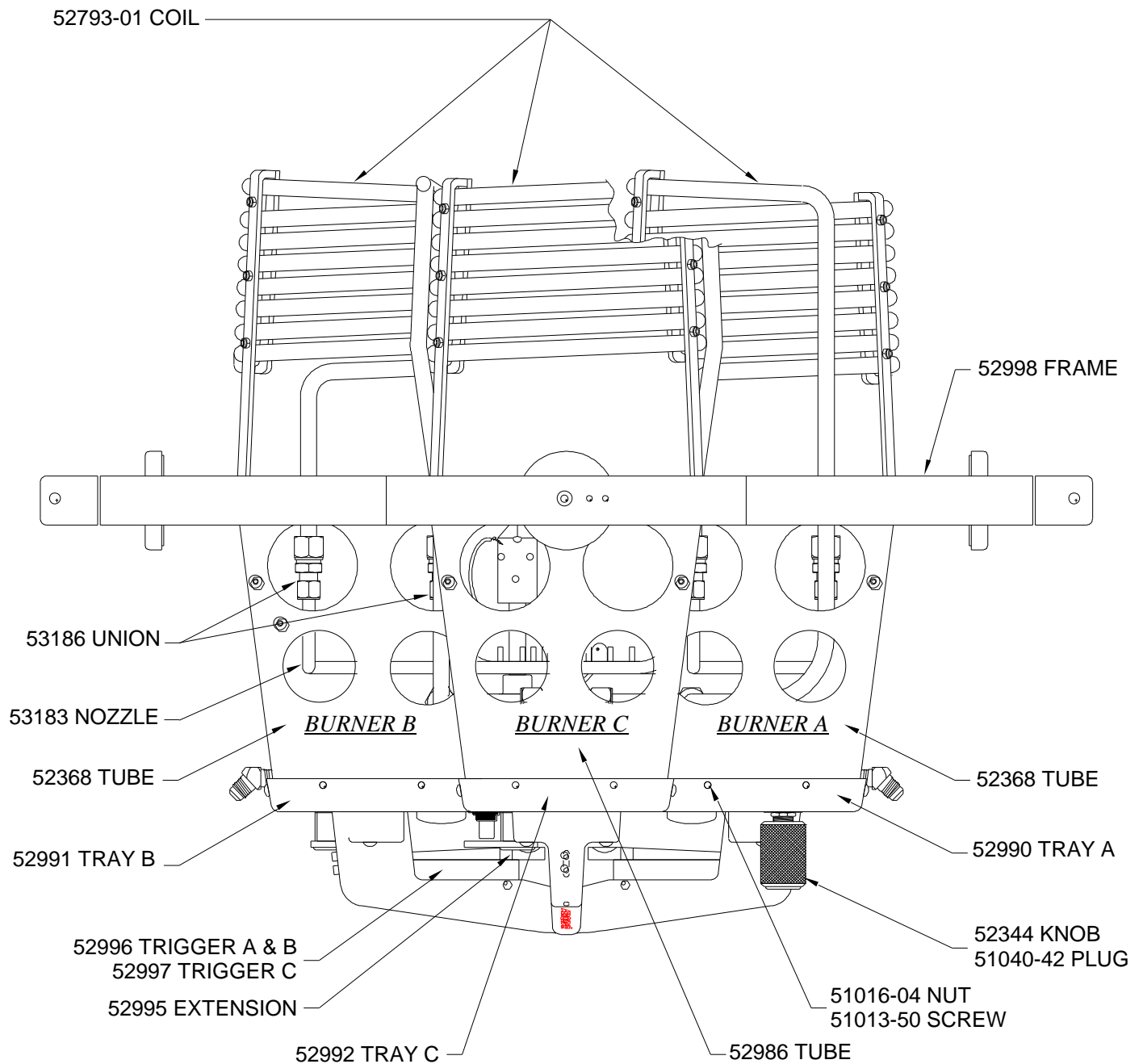
Zone Five Triple Burner
Model "HP3T"
P/N 52950

February 1, 2012

PART NUMBER	DESCRIPTION	UNITS
1001 - 1	VALVE, HOKE NO HANDLE	EA.
12722 - 7	VALVE, SHERWOOD BURNER BONNET ASSEMBLY	EA.
12722 - 8	VALVE, REGO BURNER BONNET ASSEMBLY	OBSOLETE
12722 - 9	VALVE, BLAST W/O HANDLE	EA.
17212	PLATE	EA.
17463	COIL SUPPORT INNER, REV. C	EA.
17464 - 1	COIL SUPPORT OUTER-SHORT	EA.
17464 - 2	COIL SUPPORT OUTER-LONG	EA.
17505	FITTING, MODIFIED TEE	EA.
17506	WASHER, RUBBER BLAST VALVE	EA.
17519	WASHER, BACKUP BLAST VALVE	EA.
17531	CLAMP, STANDOFF COIL	EA.
51002 - 10	COPPER TUBE .125OD X .030 WALL	FT.
51011 - 13	ROLL PIN 3/16 X 1 1/4	EA.
51011 - 17	ROLL PIN 5/32 X 5/8 PLATED	EA.
51011 - 20	ROLL PIN 3/16 X 1 IN	EA.
51011 - 24	PIN, 7/32 X 1 3/4 TYPE 24 SS	EA.
51011 - 25	PIN, 7/32 X 3/4 TYPE 2A SS	EA.
51012 - 13	TREE CLIP PC47580 BLACK	EA.
51013 - 15	SCREW, MACHINE 6 - 32 X 5/8	EA.
51013 - 36	SCREW, MACHINE 10-32 X 5/8	EA.
51013 - 37	SCREW, MACHINE 10-32 X 3/4	EA.
51013 - 40	SCREW, 10-32 X 1 1/2 HEX HEAD SS	EA.
51013 - 50	SCREW, PAN HEAD 10-24 X 3/8	EA.
51013 - 53	SCREW, AN509-416-27 1/4 IN FLAT HEAD	EA.
51013 - 88	SCREW, 1/4-20 X 1/2 BH CAP SOC SCREW	EA.
51013 - 89	SCREW, SOC HEAD CAP 8-32 X 5/8 SS	EA.
51013 - 90	SCREW, 8-32 X 1/2 SOC HD CAP	EA.
51013 - 91	SCREW, 1/4-20 X 2 HEX HD GRADE 5	EA.
51013 - 96	BOLT, AN509-416-29 FLAT HEAD 1/4 - 28 X 1 27/32	EA.
51013 - 106	SCREW, 6-32 X 14 SS BUTTON HEAD SOC CAP	EA.
51013 - 107	SCREW, 1/4-28 X 2 3/4 HEX HEAD	EA.
51013 - 113	SCREW, 10-32 X 1/2 SQUARE DRIVE PAN HEAD	EA.
51013 - 115	SCREW, 10-32 X 3/4 SQUARE DRIVE PAN HEAD	EA.
51013 - 117	SCREW, 4-40 X 1/4 SS BUTTON HEAD SOC CAP	EA.
51014 - 6	SCREW, DRIVE #4 X 1/4 TYPE U	EA.
51014 - 26	SCREW, 8-32 X 3/16 NYLON HEX HEAD	EA.
51015 - 17	NUT, MS20365-428C 1/4-28	EA.
51015 - 19	NUT, MS20500-1032 HI TEMP	EA.
51015 - 39	NUT, HEX 6-32 SS	EA.
51015 - 41	NUT, LOCKING 4-40 KEPS	EA.
51016 - 3	NUT, WING 10-32 SS	EA.
51016 - 4	NUT, SPEED ARDEN C8044-1024-3B	EA.
51016 - 15	COUPLING, HEX THREADED 1/4-20 X 3/4	EA.
51016 - 16	NUT BRASS, JAM 450-8	EA.
51017 - 1	WASHER, 1/4 PLAIN AN960-C416	EA.
51017 - 12	WASHER, 5/8 AN960C1016L	EA.
51017 - 15	WASHER, SS MS15795-841	EA.
51017 - 30	SPACER, TEFLON 161 X. 250 X .050	EA.
51017 - 36	WASHER, AN960-C8	EA.
51017 - 40	WASHER, WAVE SPRING 92161A032	EA.
51017 - 43	REGULATOR SHIM WASHER	EA.
51027 - 16	FIBERGLASS SLEEVE PIEZO	FT.
51031 - 15	CLAMP, LOOP TA715SS06	EA.
51034 - 1	C-RING, INDUSTRIAL 1200-9	EA.
51034 - 5	O-RING, BACKUP REGO (TEFLON SPLIT RING)	EA.

PART NUMBER	DESCRIPTION	UNITS
51034 - 6	O-RING, PARKER 2-007-N103-7	EA.
51034 - 10	E-RING, 1000-15	EA.
51034 - 16	O-RING, REGULATOR, SMALL	EA.
51034 - 17	O-RING, REGULATOR, LARGE	EA.
51040 - 42	PLUG, 7/8 HOLE 62PP087BM11	EA.
51040 - 43	BEARING, THRUST NTA-815	EA.
51040 - 44	WASHER, THRUST TRB-815	EA.
51040 - 45	WASHER, THRUST TRC-185	EA.
51040 - 55	GASKET, COPPER	EA.
51042 - 4	FITTING, STREET ELBOW 90 DEG.	EA.
51042 - 8	FITTING, PLUG 1/4 PIPE	EA.
51042 - 11	FITTING, ELBOW 90 DEG. SWIVEL 2047-4-4S	EA.
51042 - 15	FITTING, ADAPTER PIPE/JIC 2021-4-6S	EA.
51042 - 17	FITTING, FEMALE ELBOW 2-25BZ-B	EA.
51042 - 18	FITTING, MALE ELBOW 2-2CBZ-B	EA.
51042 - 21	FITTING, CLOSE NIPPLE 2084-4S-7/8	EA.
51042 - 38	FITTING, PIPE FITTING 2045-4-4S	EA.
51042 - 92	FITTING, MALE CLOSE NIPPLE 4-4 MACHINE SS	EA.
51042 - 93	FITTING, MALE BRANCH TEE 8-8-6SBZ	EA.
51042 - 94	FITTING, ADAPTER 3/8 TO 1/4 0107-4-6	EA.
51042 - 95	FITTING, ELBOW 90 DEG BRASS 1202P-4-4	EA.
51042 - 98	FITTING, ADAPTOR 45 2023-4-6S	EA.
51043 - 6	FILTER, METEX 52-0110-F071-04	EA.
51043 - 26	REGULATOR PISTON	OBSOLETE
51043 - 27	REGULATOR, SHERWOOD SELPAC YR3701BA	OBSOLETE
51043 - 29	VALVE, HOKE 1523M4B1, NO HANDLE	EA.
51043 - 42	SPACER KIT, METERING VALVE	EA.
51043 - 43	VALVE, HOKE STEM ONLY (METERING)	EA.
51043 - 44	WASHER, RUBBER 1/4 ID X 1/2OD X 1/32THK	EA.
51901	PILOT HEAD ASSEMBLY	OBSOLETE
51902	FITTING, MODIFIED CROSS 2080-4-4S	EA.
51907	PILOT HEAD	EA.
51909	SLUG, PILOT	EA.
51910	VALVE, BONNET ASSEMBLY HOKE	EA.
51911 - 2	WASHER, SLOTTED .048 THK.	EA.
52311	TRIGGER PIVOT BLOCK	EA.
52343	PLATE, HOLD DOWN, BLAST VALVE	EA.
52344	KNOB, METERING	EA.
52345	BUSHING, GIMBAL	EA.
52348	END PLATE	EA.
52349	GIMBAL BRACKET	EA.
52355	SPRING, GIMBAL	EA.
52357	O-RING, BLAST VALVE	EA.
52359 - 4	PIN, PILOT HANDLE	EA.
52360	HANDLE, PILOT VALVE	EA.
52361	VALVE, PILOT HANDLE BARREL	EA.
52365	TRIGGER LINK	EA.
52368	SQUARE TUBE	EA.
52371	SPRING CUP 1/2	EA.
52372	GIMBAL BLOCK	EA.
52374	SPACER, GIMBAL	EA.
52375	FITTING, XYZ FITTING 90 DEGREE ELBOW MODIFIED	EA.
52378	SPRING CUP 9/32 IN	EA.
52380	VALVE, HOKE MODIFIED	EA.
52389	SPACER, BLAST VALVE	EA.
52396	PIN, TRIGGER	EA.

PART NUMBER	DESCRIPTION	UNITS
52465	BRACKET, GIMBAL ELS BURNER	EA.
52467	BUSHING, GIMBAL ELS LONG	EA.
52726	PRESSURE GAUGE, ASSEMBLY	EA.
52727	PRESSURE GAUGE KIT (REPLACEMENT WIKA)	EA.
52793 - 1	COIL ASSEMBLY, HPIII REPLACEMENT ONLY	EA.
52822	PIEZO IGNITER W/FIBERGLASS SLEEVE	EA.
52986	SQUARE TUBE, HPIII TRIPLE	EA.
52990	TRAY, A HPIII TRIPLE	EA.
52991	TRAY, B HPIII TRIPLE	EA.
52992	TRAY, C HPIII TRIPLE	EA.
52994	HANDLE, HPIII TRIPLE	EA.
52995	TRIGGER EXTENSION, HPIII TRIPLE	EA.
52996	TRIGGER A & B HPIII TRIPLE	EA.
52997	TRIGGER C HPIII TRIPLE	EA.
52998	BURNER FRAME HPIII TRIPLE	EA.
53183	NOZZLE COIL W/ASPIRATOR	OBSOLETE
53186	UNION RESTRICTED, HPIII UPDATE	EA.
53285	REGULATOR, FEMALE FITTING	EA.
53286	REGULATOR, MALE FITTING	EA.
53287	REGULATOR, STEM SEAL	EA.



BURNER ASSEMBLY,
HPIII TRIPLE

Figure TB1

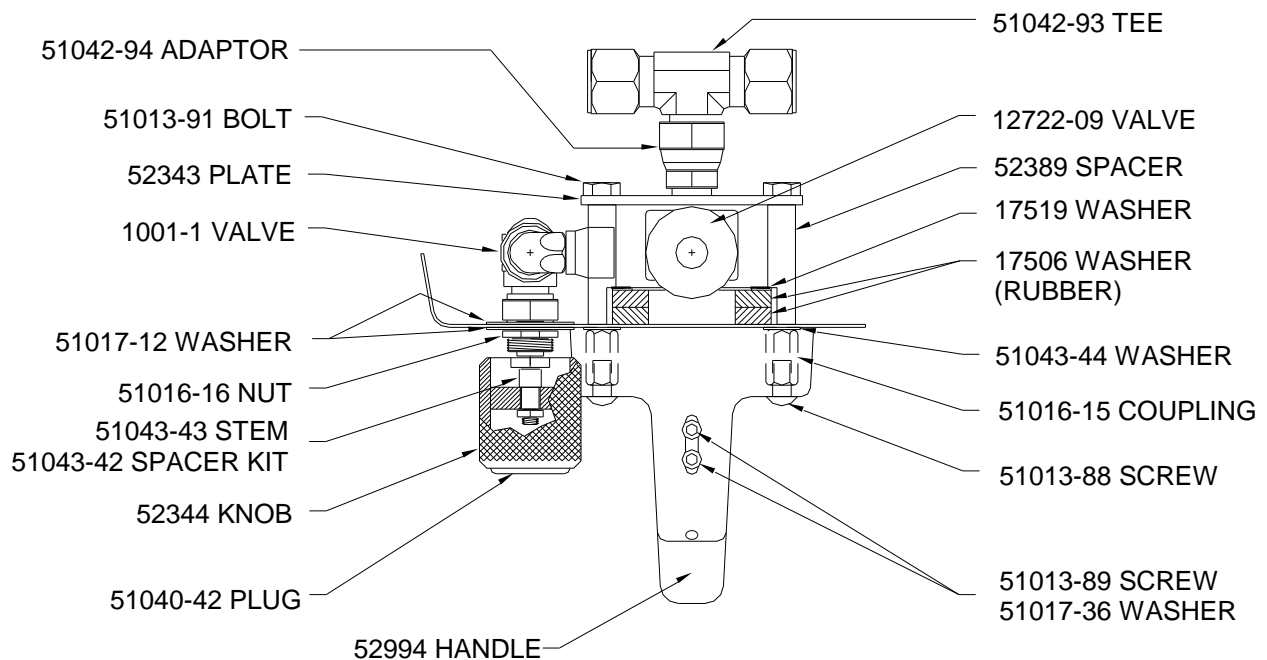
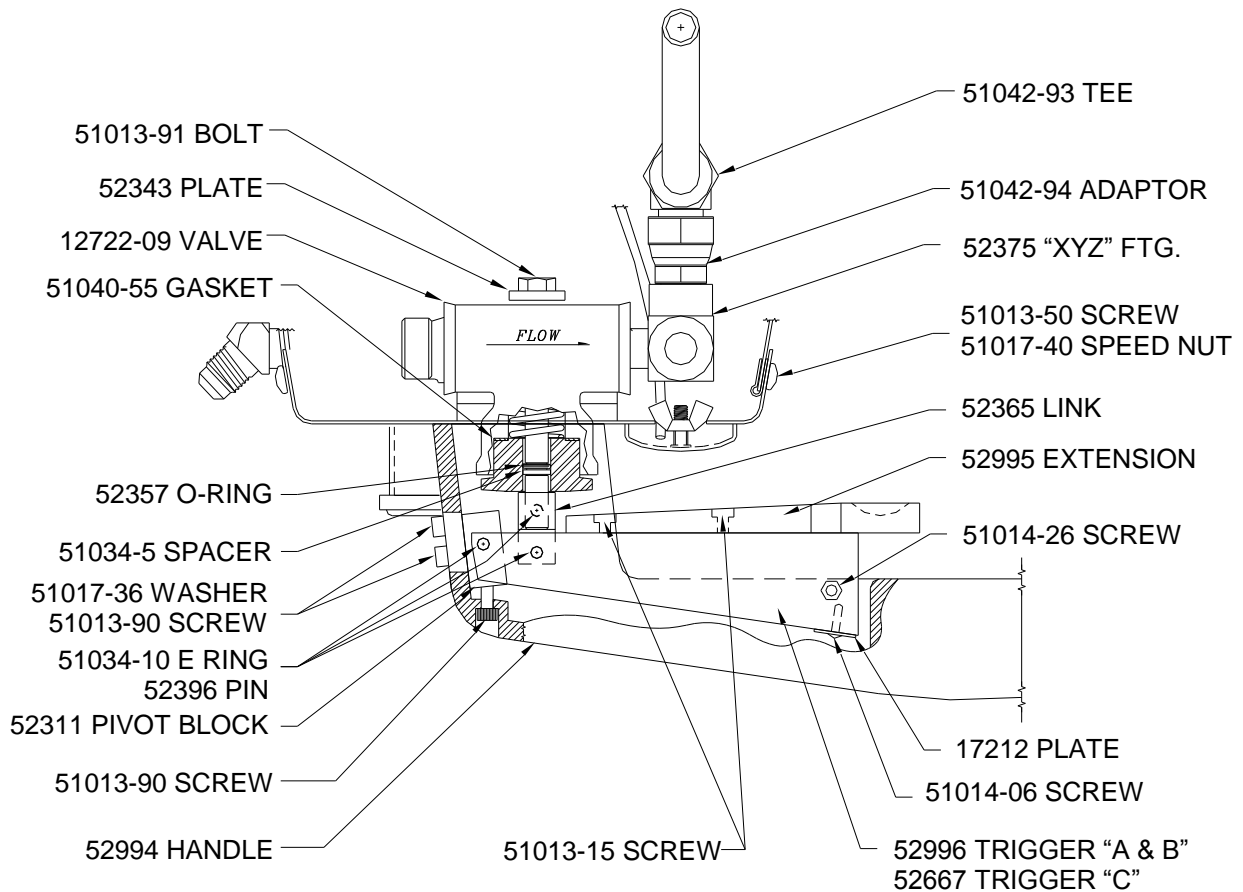


Figure TB2

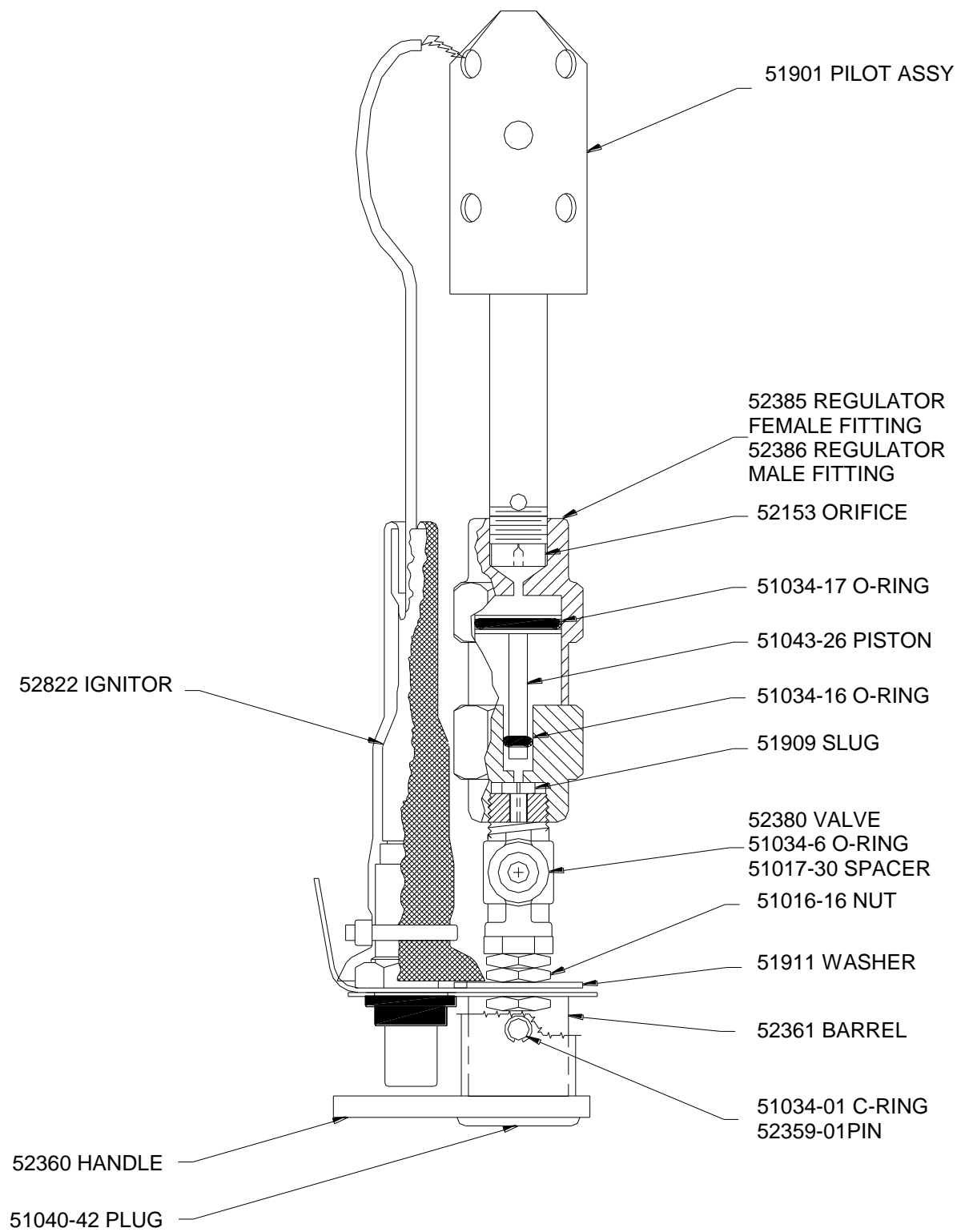
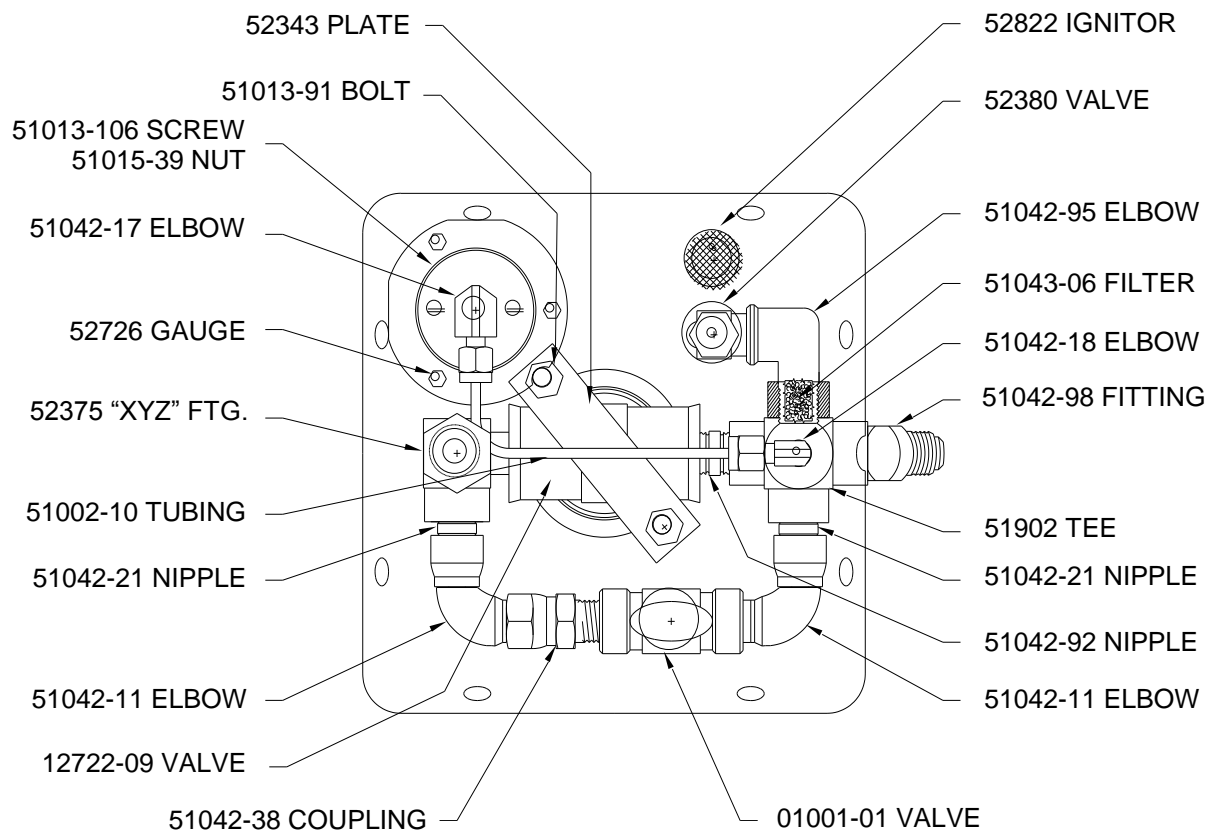
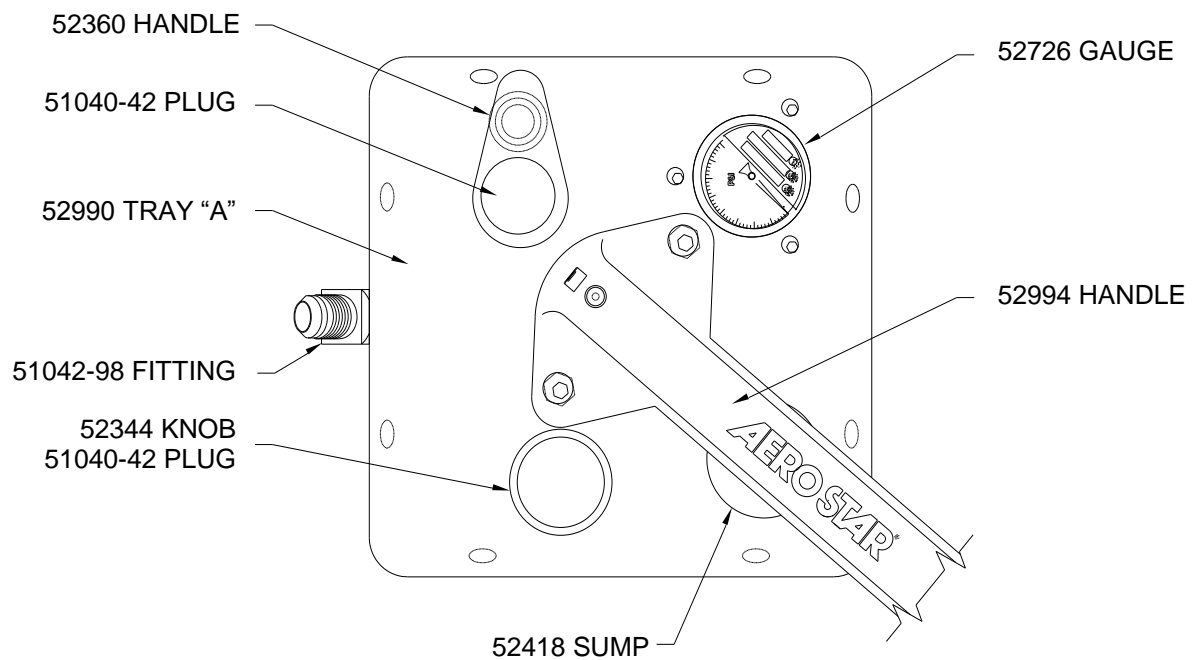
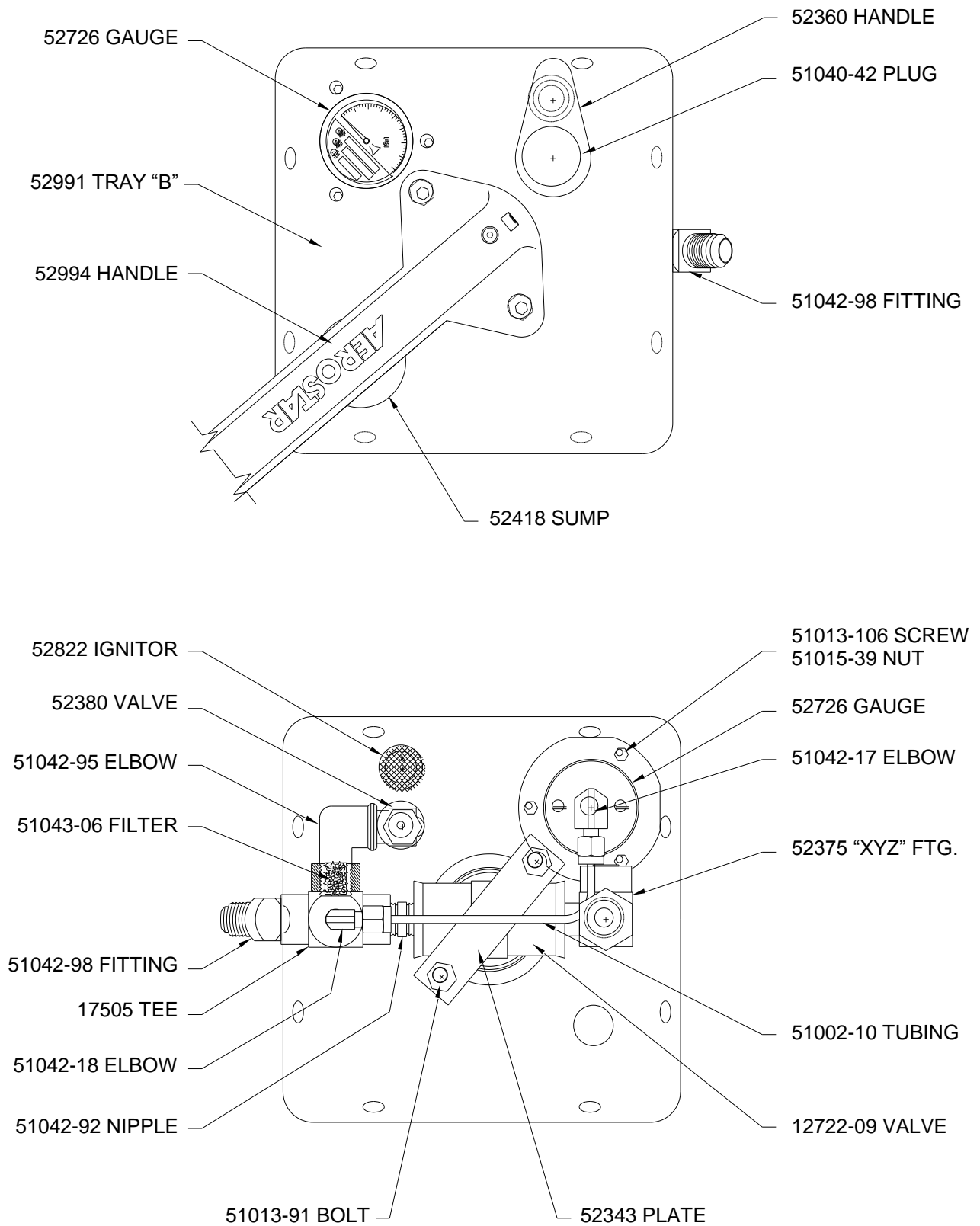


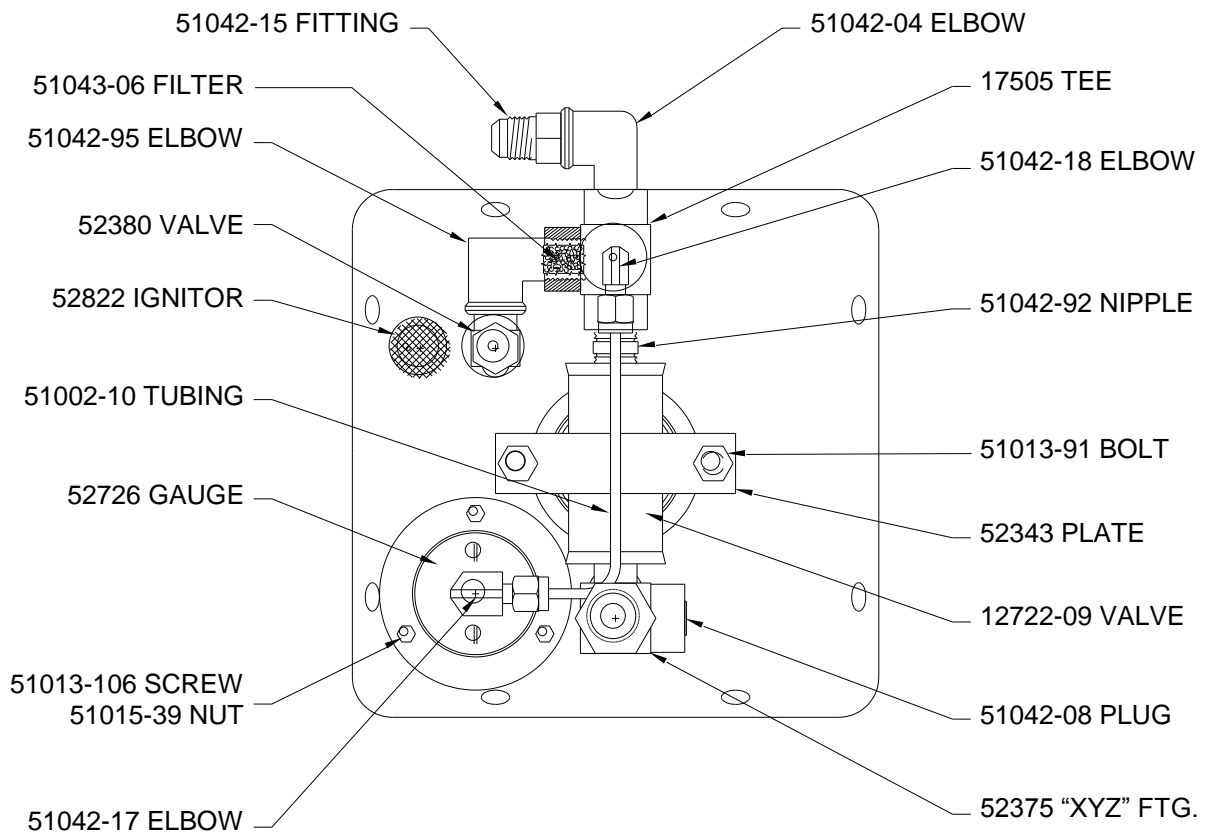
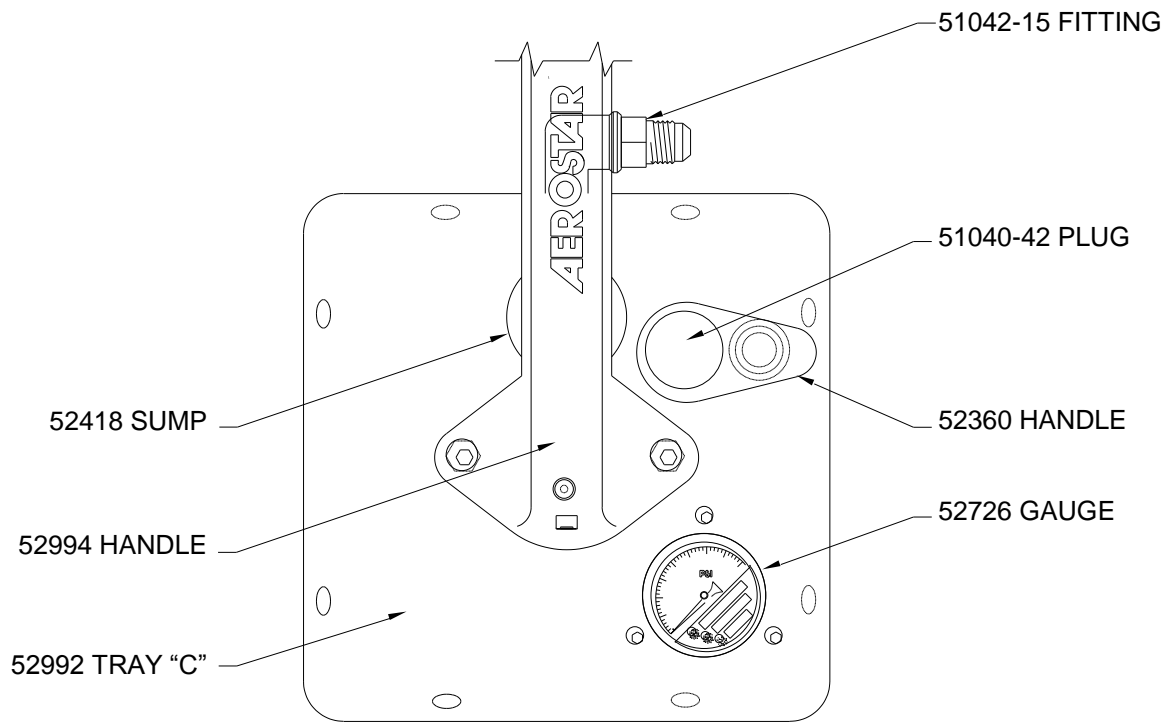
Figure TB3



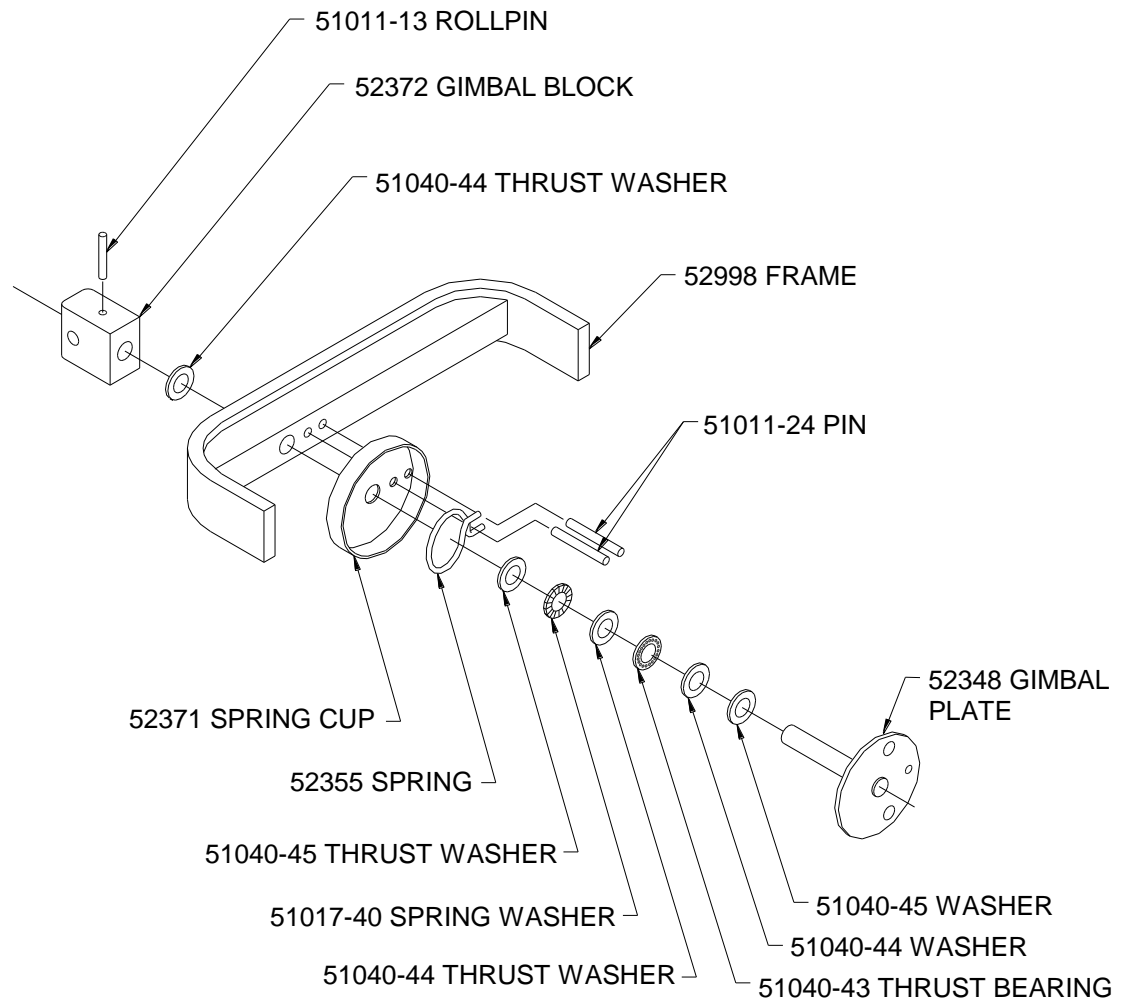
BURNER "A" PLUMBING
Figure TB4



BURNER "B" PLUMBING
Figure TB5

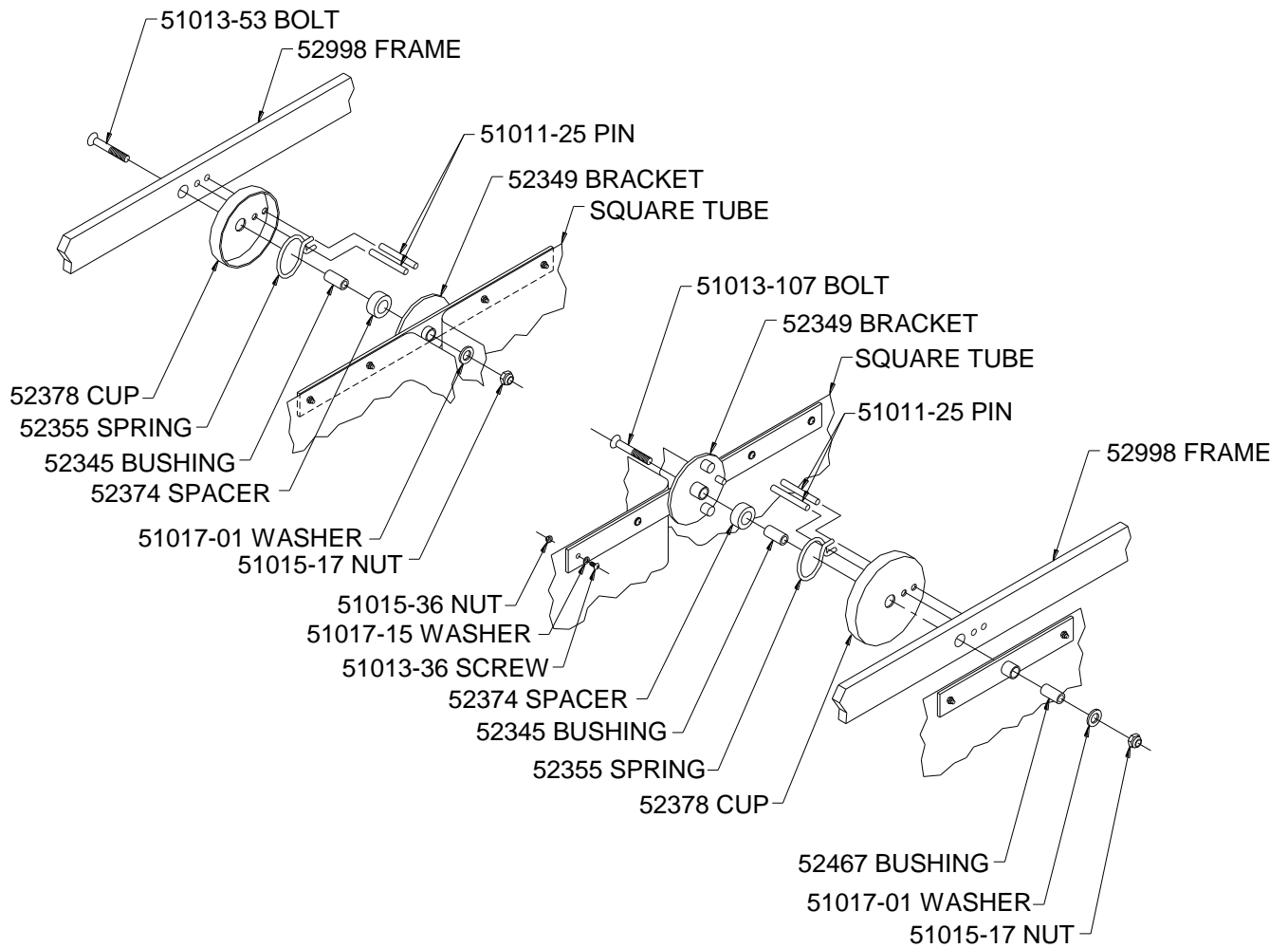


BURNER "C" PLUMBING
Figure TB6



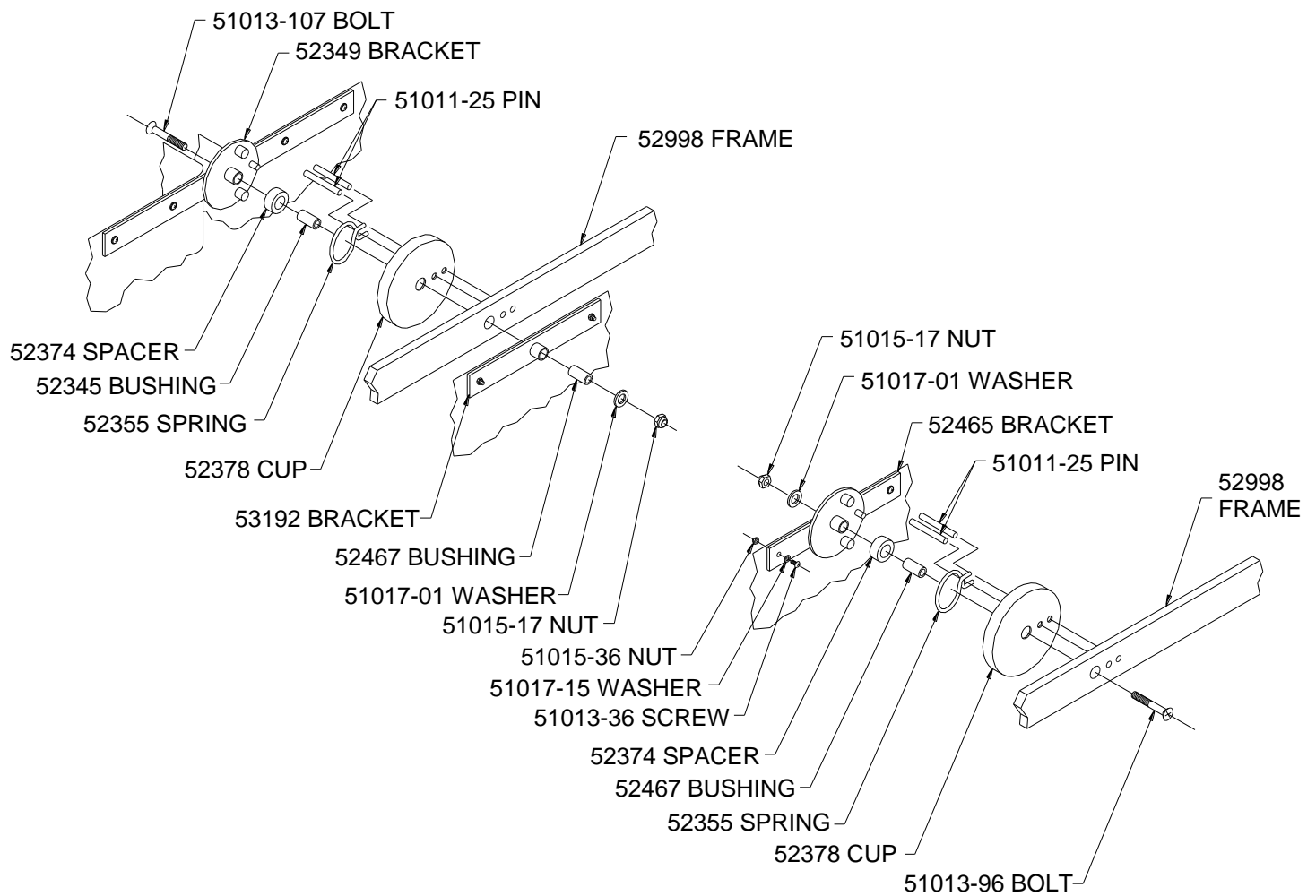
GIMBAL SPRING & PIVOT MECHANISM - ENDS

Figure TB7



GIMBAL SPRING & PIVOT MECHANISM - DUAL SIDES

Figure TB8



GIMBAL SPRING & PIVOT MECHANISM - SINGLE SIDE

Figure TB9

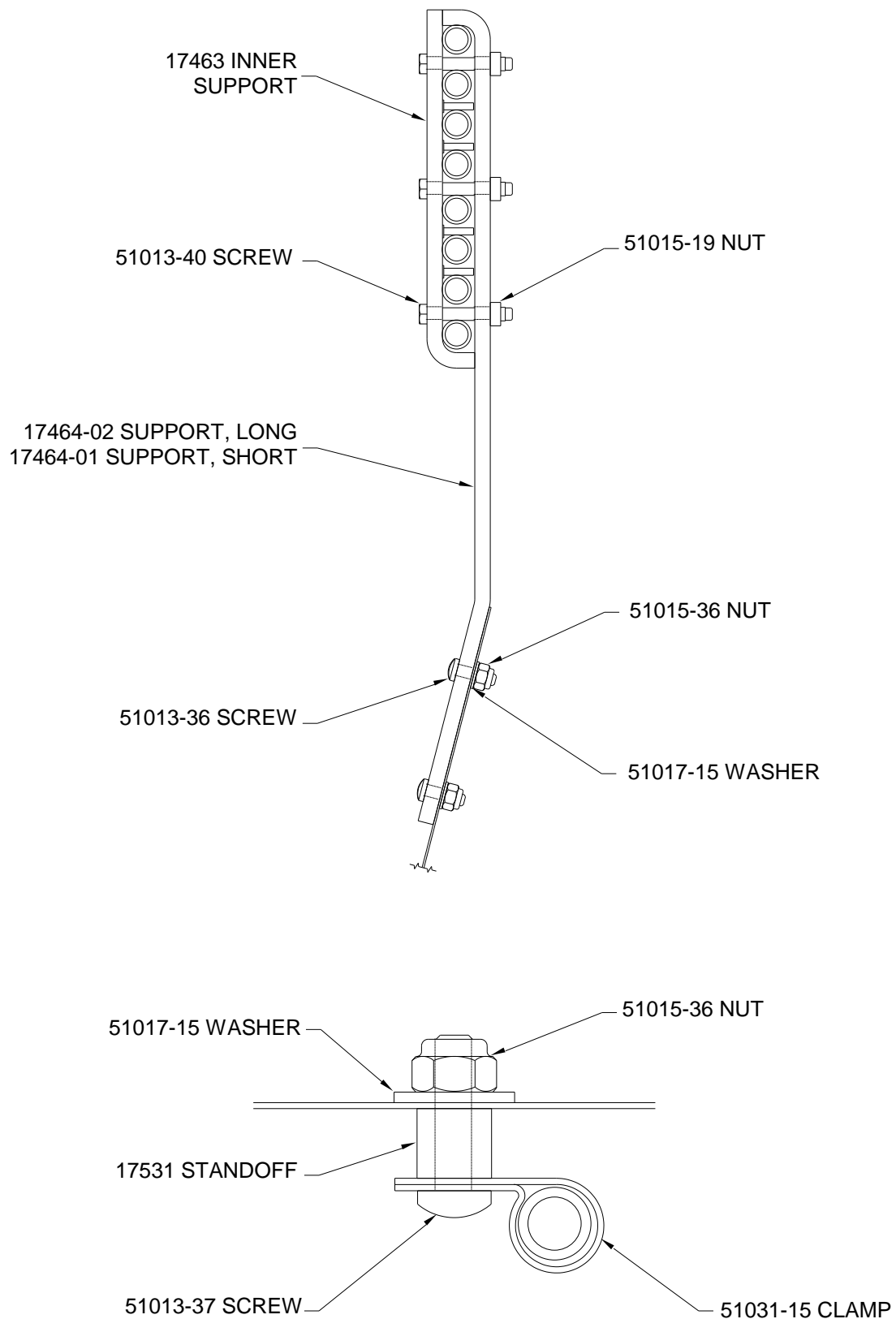


Figure TB10