

RAVEN

AEROSTAR

PARTS MANUAL

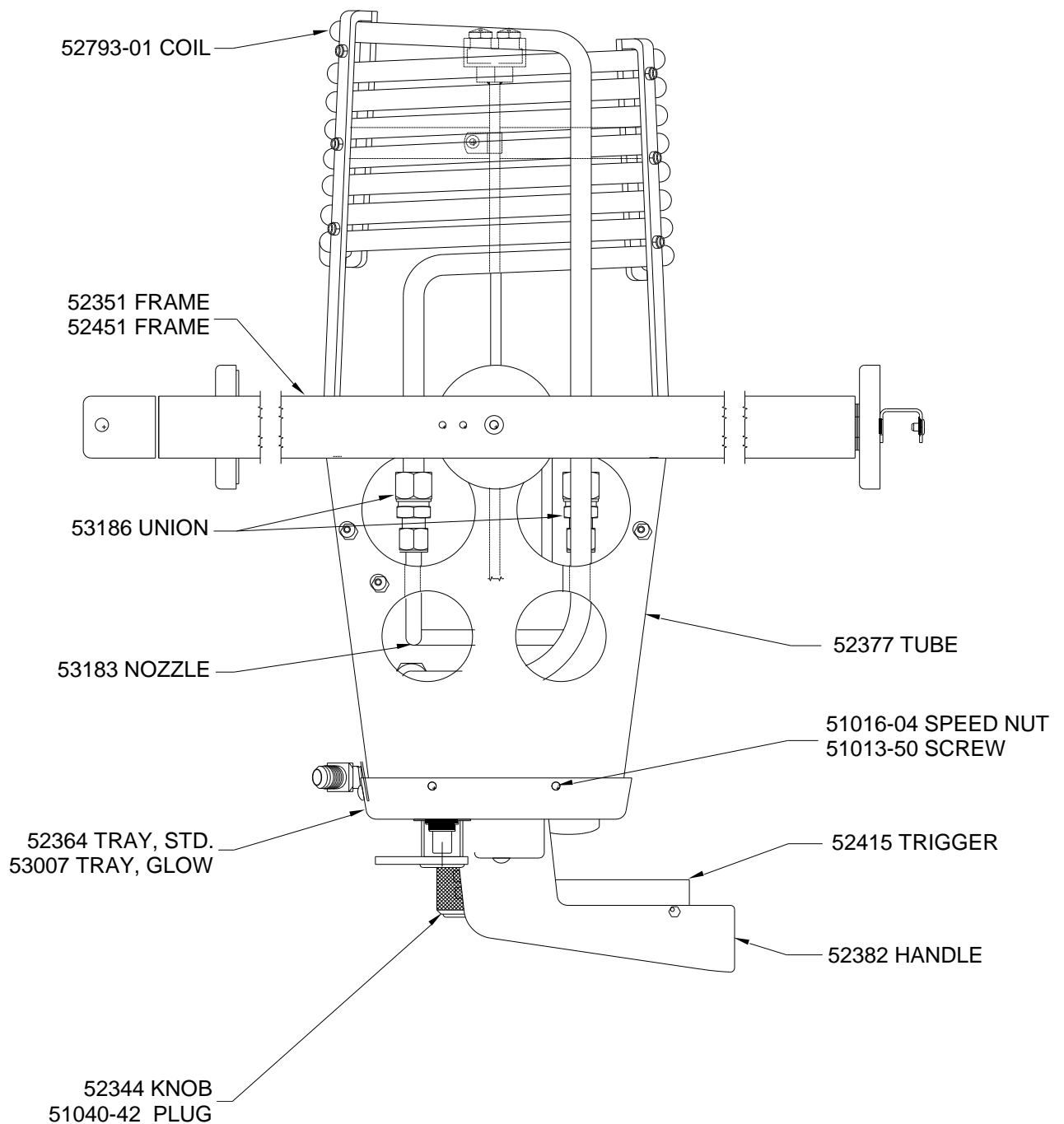
Zone Five Single Burner
Model "HP3S"
P/N 52370

February 1, 2012

PART NUMBER	DESCRIPTION	UNITS
1001 - 1	VALVE, HOKE NO HANDLE	EA.
12722 - 7	VALVE, SHERWOOD BURNER BONNET ASSEMBLY	EA.
12722 - 8	VALVE, REGO BURNER BONNET ASSEMBLY	OBSOLETE
12722 - 9	VALVE, BLAST W/O HANDLE	EA.
15375	NOZZLE, AUXILIARY HEATER	EA.
17463	COIL SUPPORT INNER, REV. C	EA.
17464 - 1	COIL SUPPORT OUTER-SHORT	EA.
17464 - 2	COIL SUPPORT OUTER-LONG	EA.
17505	FITTING, MODIFIED TEE	EA.
17506	WASHER, RUBBER BLAST VALVE	EA.
17519	WASHER, BACKUP BLAST VALVE	EA.
17531	CLAMP, STANDOFF COIL	EA.
51002 - 10	COPPER TUBE .125OD X .030 WALL	FT.
51008 - 43	CLEANER, ZEP OLD SMOKY	EA.
51008 - 52	LUBRICANT, KRYTOX	EA.
51011 - 13	ROLL PIN 3/16 X 1 1/4	EA.
51011 - 17	ROLL PIN 5/32 X 5/8 PLATED	EA.
51011 - 20	ROLL PIN 3/16 X 1 IN	EA.
51011 - 24	PIN, 7/32 X 1 3/4 TYPE 24 SS	EA.
51011 - 25	PIN, 7/32 X 3/4 TYPE 2A SS	EA.
51012 - 13	TREE CLIP PC47580	EA.
51013 - 7	SCREW, MACHINE MS51958-63	EA.
51013 - 36	SCREW, MACHINE 10-32 X 5/8	EA.
51013 - 37	SCREW, MACHINE 10-32 X 3/4	EA.
51013 - 40	SCREW, 10-32 X 1 1/2 HEX HEAD SS	EA.
51013 - 50	SCREW, PAN HEAD 10-24 X 3/8	EA.
51013 - 88	SCREW, 1/4-20 X 1/2 BH CAP SOC SCREW	EA.
51013 - 89	SCREW, SOC HEAD CAP 8-32 X 5/8 SS	EA.
51013 - 90	SCREW, 8-32 X 1/2 SOC HD CAP	EA.
51013 - 91	SCREW, 1/4-20 X 2 HEX HD GRADE 5	EA.
51013 - 96	BOLT, AN509-416-29 FLAT HEAD 1/4 - 28 X 1 27/32	EA.
51013 - 97	SCREW, MS24694-S104	EA.
51013 - 98	SCREW, MS24694-S112	EA.
51013 - 106	SCREW, 6-32 X 14 SS BUTTON HEAD SOC CAP	EA.
51013 - 113	SCREW, 10-32 X 1/2 SQUARE DRIVE PAN HEAD	EA.
51013 - 115	SCREW, 10-32 X 3/4 SQUARE DRIVE PAN HEAD	EA.
51013 - 117	SCREW, 4-40 X 1/4 SS BUTTON HEAD SOC CAP	EA.
51014 - 26	SCREW, 8-32 X 3/16 NYLON HEX HEAD	EA.
51015 - 19	NUT, MS20500-1032 HI TEMP	EA.
51015 - 39	NUT, HEX 6-32 SS	EA.
51015 - 41	NUT, LOCKING 4-40 KEPS	EA.
51016 - 3	NUT, WING 10-32 SS	EA.
51016 - 4	NUT, SPEED ARDEN C8044-1024-3B	EA.
51016 - 15	COUPLING, HEX THREADED 1/4-20 X 3/4	EA.
51016 - 16	NUT BRASS, JAM 450-8	EA.
51017 - 1	WASHER, 1/4 PLAIN AN960-C416	EA.
51017 - 12	WASHER, 5/8 AN960C1016L	EA.
51017 - 13	WASHER, 3/8	EA.
51017 - 15	WASHER, SS MS15795-841	EA.
51017 - 30	SPACER, TEFLON 161 X .250 X .050	EA.
51017 - 34	WASHER, 1.125OD X .450 ID X .048 THK	EA.
51017 - 36	WASHER, AN960-C8	EA.
51017 - 40	WASHER, WAVE SPRING 92161A032	EA.
51017 - 43	REGULATOR SHIM WASHER	EA.
51027 - 16	FIBERGLASS SLEEVE PIEZO	FT.
51031 - 15	CLAMP, LOOP TA715SS06	EA.
51031 - 16	CLAMP, LOOP TA715SS05	EA.

PART NUMBER	DESCRIPTION	UNITS
51031 - 18	CLAMP, LOOP TA715SS08	EA.
51031 - 19	CLAMP, LOOP TA715SS02	EA.
51034 - 1	C-RING, INDUSTRIAL 1200-9	EA.
51034 - 5	O-RING, BACKUP REGO (TEFLON SPLIT RING)	EA.
51034 - 6	O-RING, PARKER 2-007-N103-7	EA.
51034 - 10	E-RING, 1000-15	EA.
51034 - 16	O-RING, REGULATOR, SMALL	EA.
51034 - 17	O-RING, REGULATOR, LARGE	EA.
51040 - 42	PLUG, 7/8 HOLE 62PP087BM11	EA.
51040 - 43	BEARING, THRUST NTA-815	EA.
51040 - 44	WASHER, THRUST TRB-815	EA.
51040 - 45	WASHER, THRUST TRC-185	EA.
51040 - 55	GASKET, COPPER	EA.
51042 - 2	FITTING, ELBOW 90 DEG. 1/4 PIPE	EA.
51042 - 4	FITTING, STREET ELBOW 90 DEG.	EA.
51042 - 7	FITTING, FEMALE TEE 1/4 PIPE	EA.
51042 - 9	FITTING, COUPLING 1/4 IN PIPE 4 PC	EA.
51042 - 17	FITTING, FEMALE ELBOW 2-25BZ-B	EA.
51042 - 18	FITTING, MALE ELBOW 2-2CBZ-B	EA.
51042 - 21	FITTING, CLOSE NIPPLE 2084-4S-7/8	EA.
51042 - 92	FITTING, MALE CLOSE NIPPLE 4-4 MACHINE SS	EA.
51042 - 93	FITTING, MALE BRANCH TEE 8-8-6SBZ	EA.
51042 - 94	FITTING, ADAPTER 3/8 TO 1/4 0107-4-6	EA.
51042 - 95	FITTING, ELBOW 90 DEG BRASS 1202P-4-4	EA.
51042 - 97	FITTING, PIPE NIPPLE 4-4-2MHLN-S	EA.
51042 - 98	FITTING, ADAPTOR 45 2023-4-6S	EA.
51042 - 101	FITTING, ELBOW 45 FLARE 159F-6.4	EA.
51042 - 111	FITTING, 1/4 TUBE / 1/4 PIPE 4-46BZ-SS	EA.
51043 - 6	FILTER, METEX 52-0110-F071-04	EA.
51043 - 26	REGULATOR PISTON	OBSOLETE
51043 - 27	REGULATOR, SHERWOOD SELPAC YR3701BA	OBSOLETE
51043 - 29	VALVE, HOKE 1523M4B1, NO HANDLE	EA.
51043 - 42	SPACER KIT, METERING VALVE	EA.
51043 - 43	VALVE, HOKE STEM ONLY (METERING)	EA.
51043 - 44	WASHER, RUBBER 1/4 ID X 1/2OD X 1/32THK	EA.
51043 - 53	SPRING, GLOW HANDLE	EA.
51901	PILOT HEAD ASSEMBLY	OBSOLETE
51902	FITTING, MODIFIED CROSS 2080-4-4S	EA.
51907	PILOT HEAD	EA.
51908	WASHER, SS .50 ID X 1.131 OD	EA.
51909	SLUG, PILOT	EA.
51910	VALVE, BONNET ASSEMBLY HOKE	EA.
51911 - 2	WASHER, SLOTTED .048 THK.	EA.
51943 - 44	WASHER, .25 ID X .500 OD X .031	EA.
52153	ORIFICE UPDATE PILOT	EA.
52230	VALVE, PILOT STEM	EA.
52311	TRIGGER PIVOT BLOCK	EA.
52343	PLATE, HOLD DOWN, BLAST VALVE	EA.
52344	KNOB, METERING	EA.
52348	END PLATE	EA.
52351	BURNER FRAME HPIII DUAL	EA.
52355	SPRING, GIMBAL	EA.
52357	O-RING, BLAST VALVE	EA.
52359 - 3	PIN, GLOW HANDLE	EA.
52359 - 4	PIN, PILOT HANDLE	EA.
52360	HANDLE, PILOT VALVE	EA.
52361	VALVE, PILOT HANDLE BARREL	EA.

PART NUMBER	DESCRIPTION	UNITS
52364	TRAY, SINGLE	EA.
52365	TRIGGER LINK	EA.
52371	SPRING CUP 1/2	EA.
52372	GIMBAL BLOCK	EA.
52374	SPACER, GIMBAL	EA.
52375	FITTING, XYZ FITTING 90 DEGREE ELBOW MODIFIED	EA.
52377	SQUARE TUBE, HPIII SINGLE	EA.
52378	SPRING CUP 9/32 IN	EA.
52380	VALVE, HOKE MODIFIED	EA.
52382	TRIGGER HANDLE, SINGLE	EA.
52389	SPACER, BLAST VALVE	EA.
52396	PIN, TRIGGER	EA.
52415	TRIGGER SUBASSEMBLY	EA.
52418	ASPIRATOR SUMP ASSEMBLY	EA.
52420 - 3	HPIII COIL ASSY W/NUTS AND FERRULES	EA.
52451	FRAME, BURNER ELS	EA.
52461	BRACKET, MOUNTING ELS BURNER	EA.
52462	BRACKET, MOUNTING ELS W/SPRING PLATE	EA.
52465	BRACKET, GIMBAL ELS BURNER	EA.
52467	BUSHING, GIMBAL ELS LONG	EA.
52468	BUSHING, GIMBAL ELS SHORT	EA.
52726	PRESSURE GAUGE, ASSEMBLY	EA.
52727	PRESSURE GAUGE KIT (REPLACEMENT WIKA)	EA.
52793 - 1	COIL ASSEMBLY, HPIII REPLACEMENT ONLY	EA.
52822	PIEZO IGNITER W/FIBERGLASS SLEEVE	EA.
52983	NOZZLE, GLOW	EA.
53005	BRACKET, HP3S GLOW	EA.
53007	TRAY, GLOW BURNER SINGLE	EA.
53035	HANDLE, GLOW BURNER	EA.
53183	NOZZLE COIL W/ASPIRATOR	OBSOLETE
53186	UNION RESTRICTED, HPIII UPDATE	EA.
53192	SPACER, GIMBAL BRACKET, HP3S	EA.
53195 - 1	CLIP, RETAINER HP3S	EA.
53285	REGULATOR, FEMALE FITTING	EA.
53286	REGULATOR, MALE FITTING	EA.
53287	REGULATOR, STEM SEAL	EA.
60000 - 105	ELS BURNER CLIPS (SERVICE BULLETIN #136)	EA.



BURNER ASSEMBLY,
HP/II SINGLE

Figure SB1

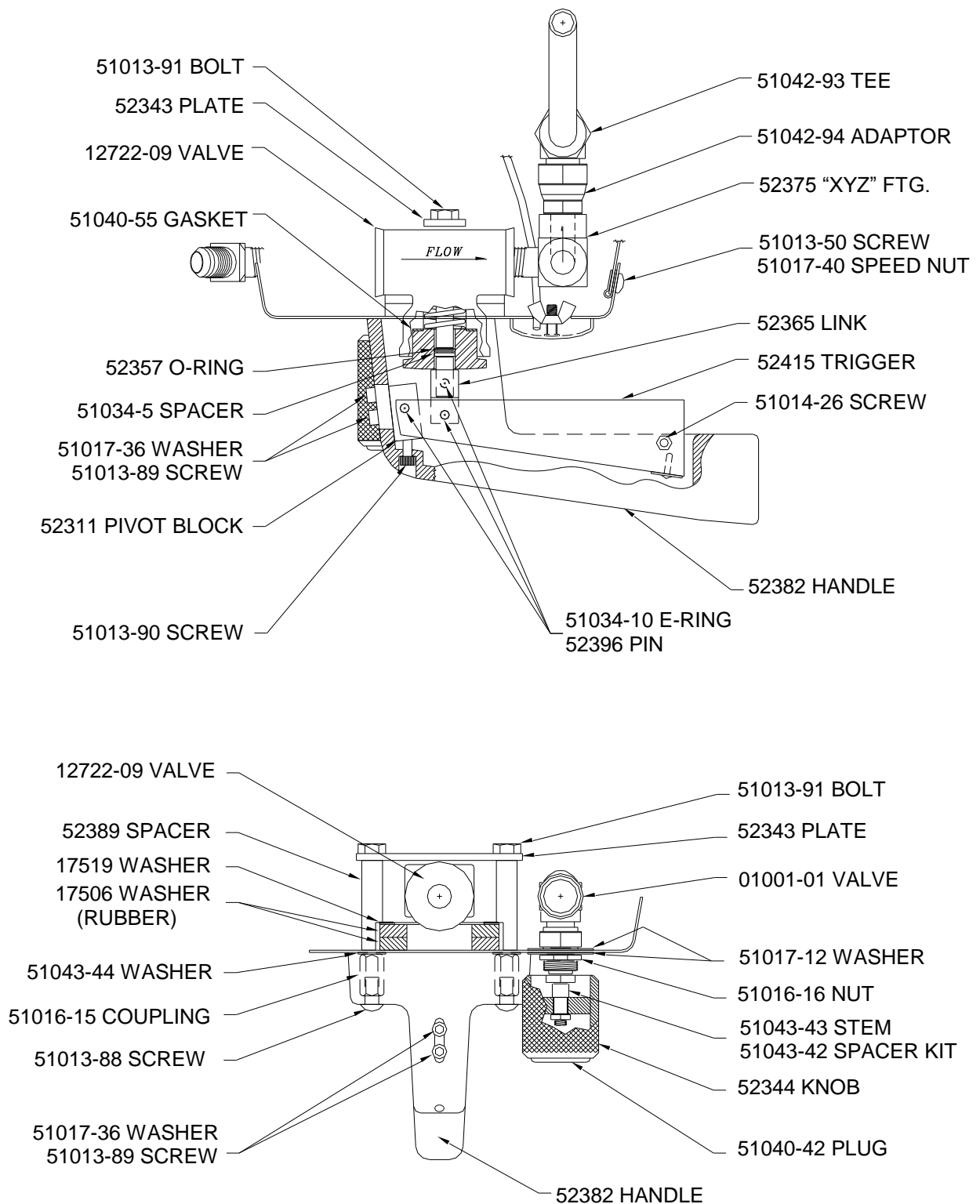


Figure SB2

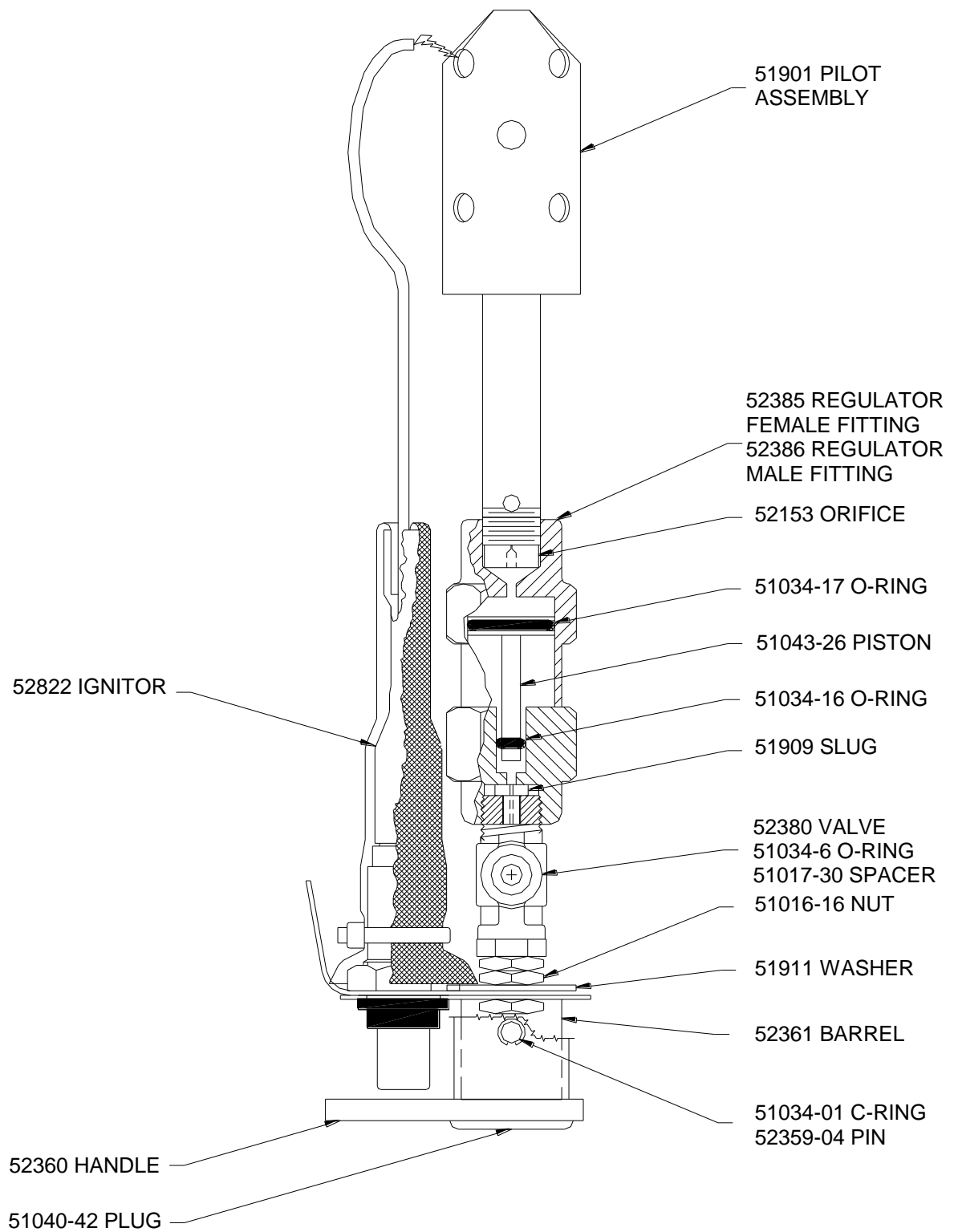
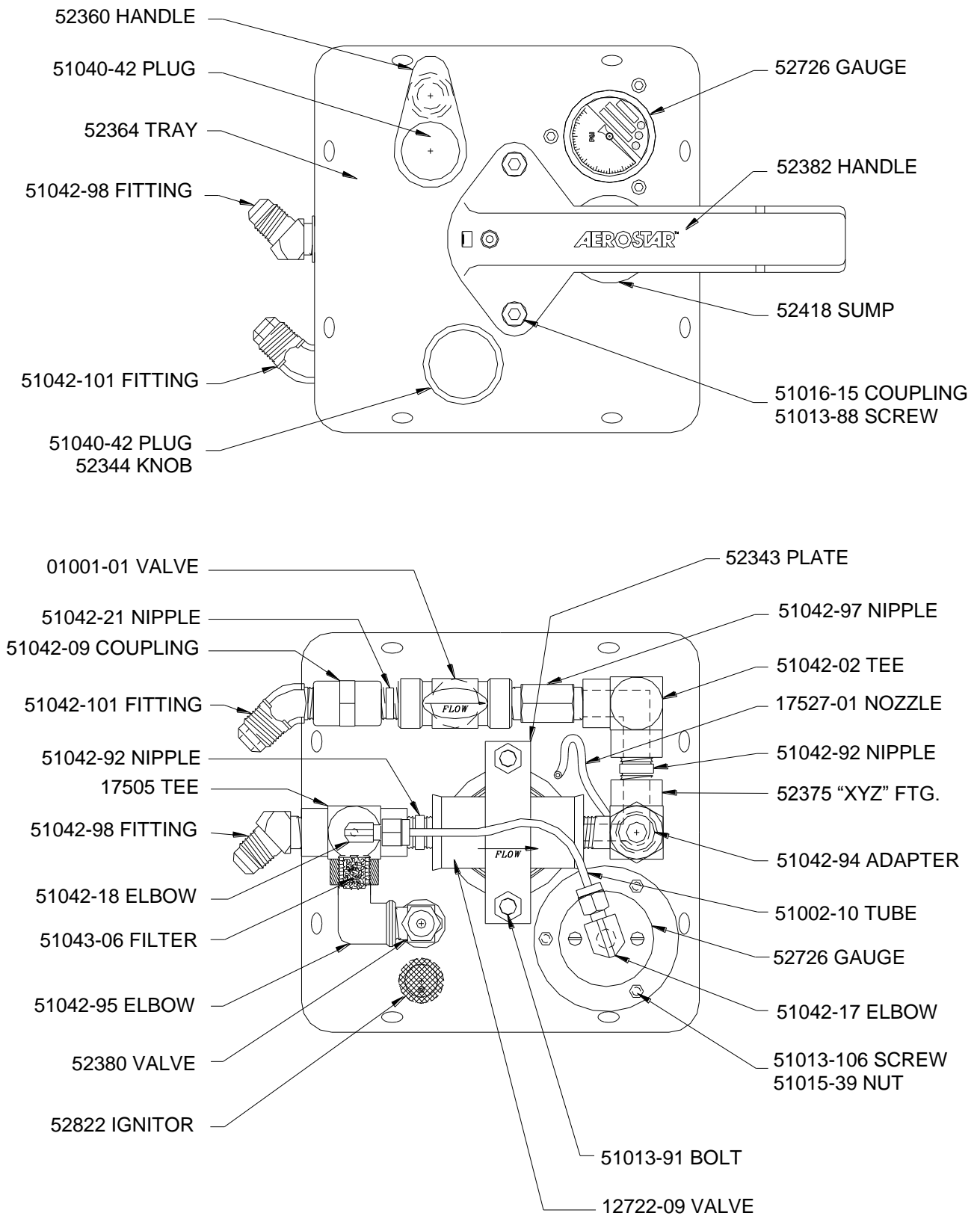
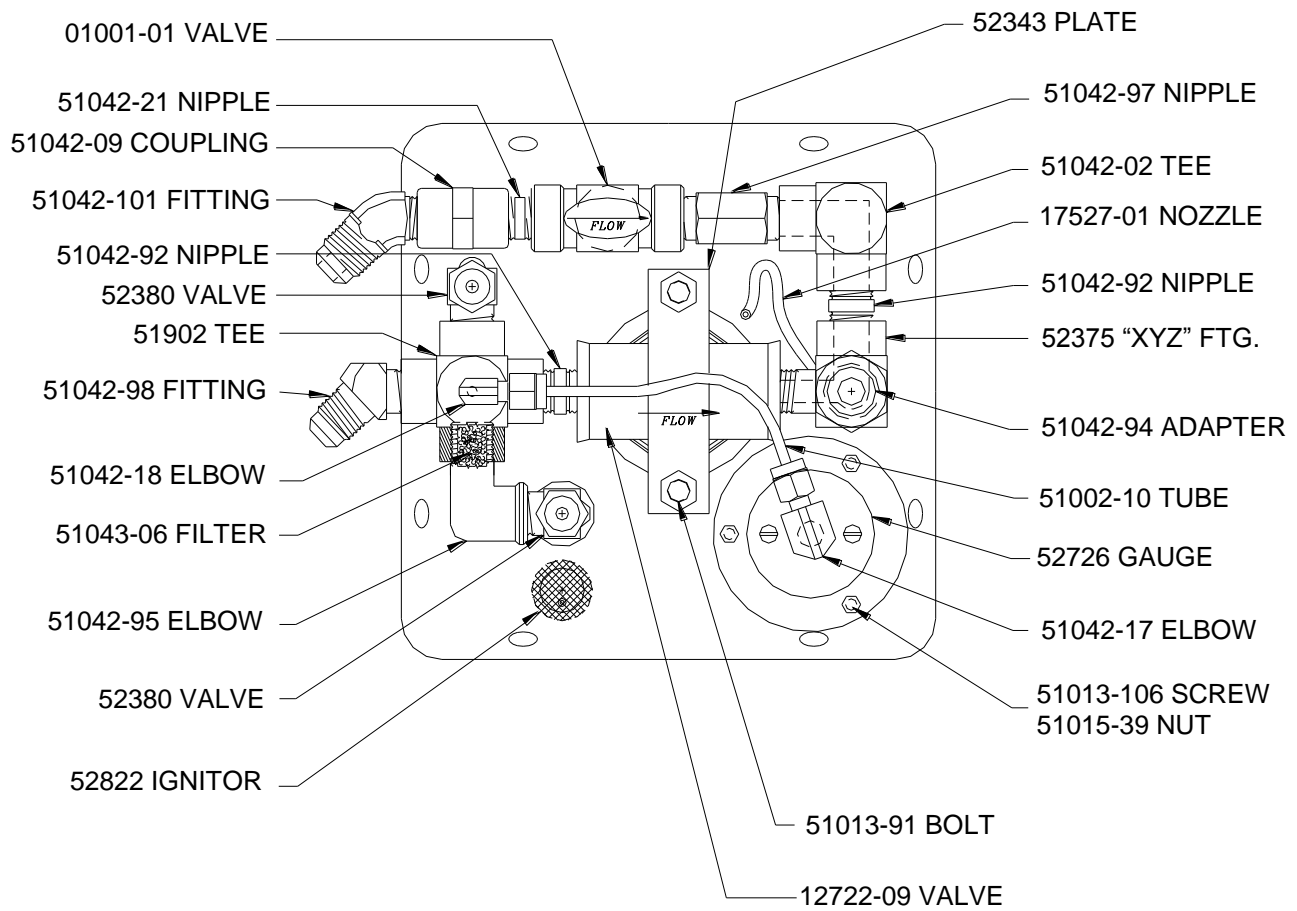
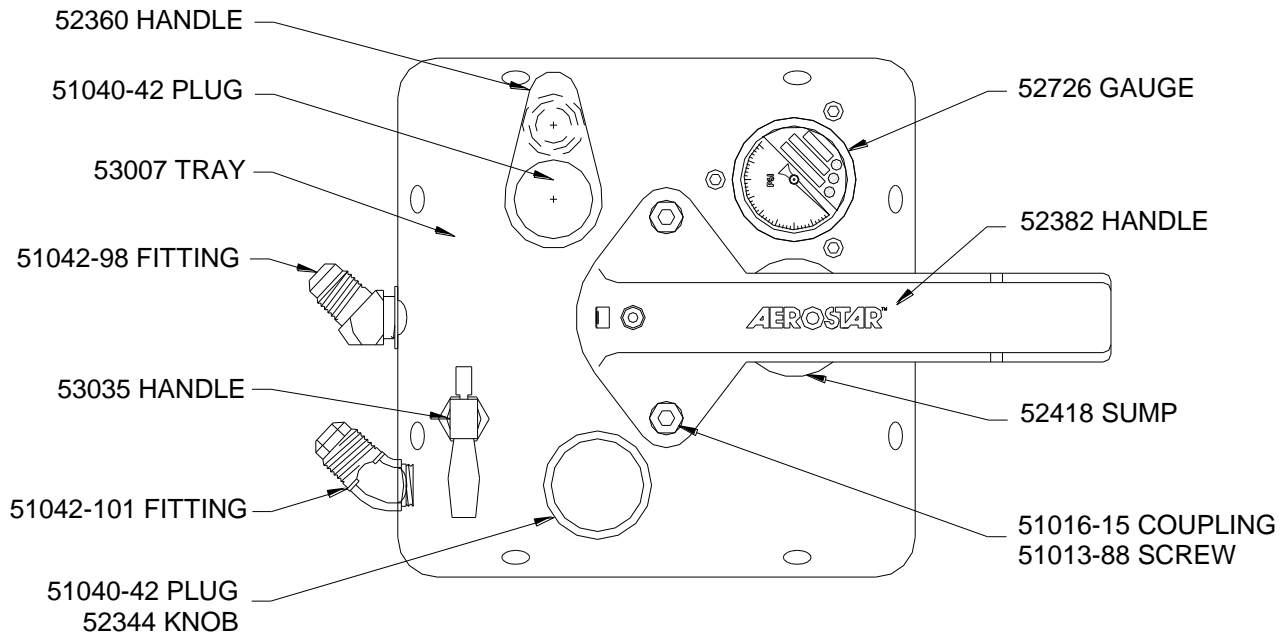


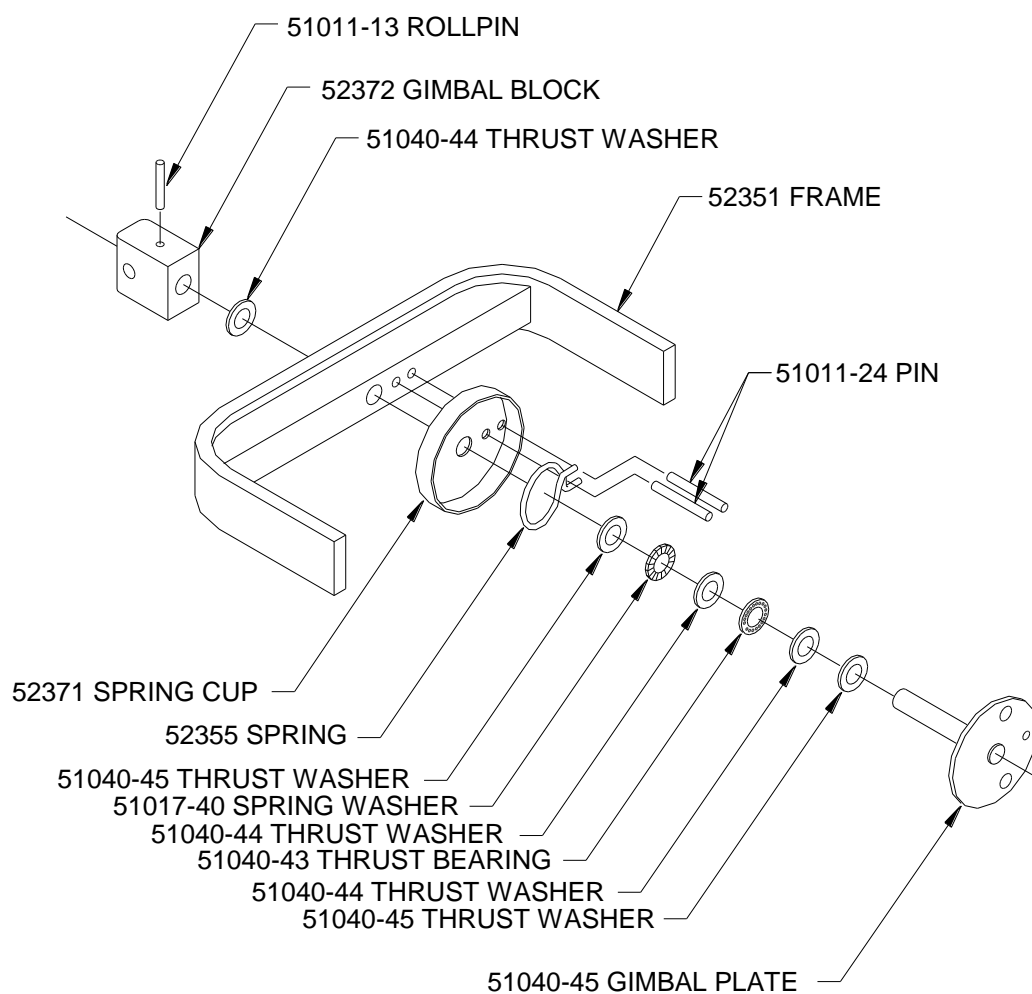
Figure SB3



Standard Plumbing
Figure SB4

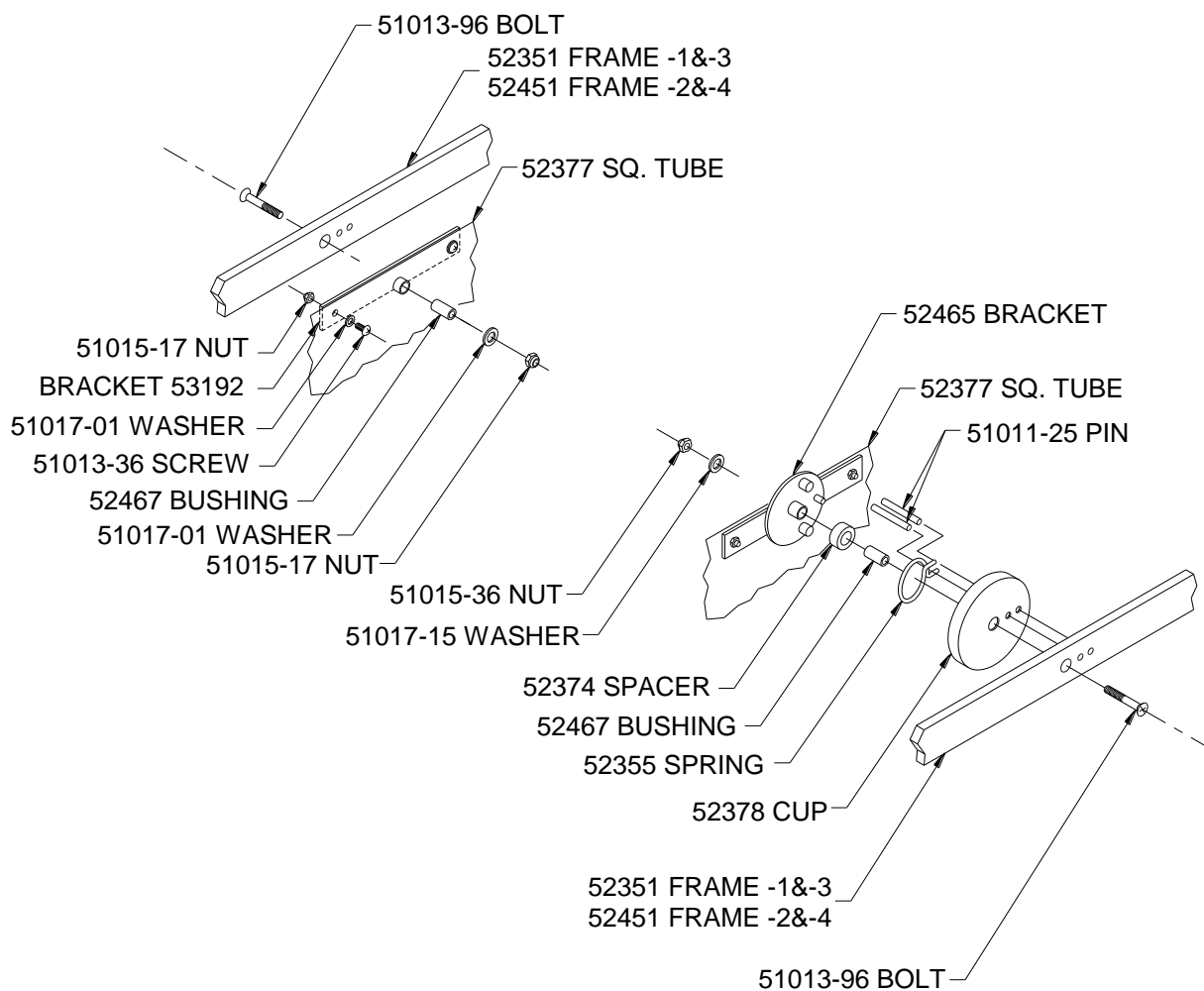


Glow Plumbing
Figure SB5

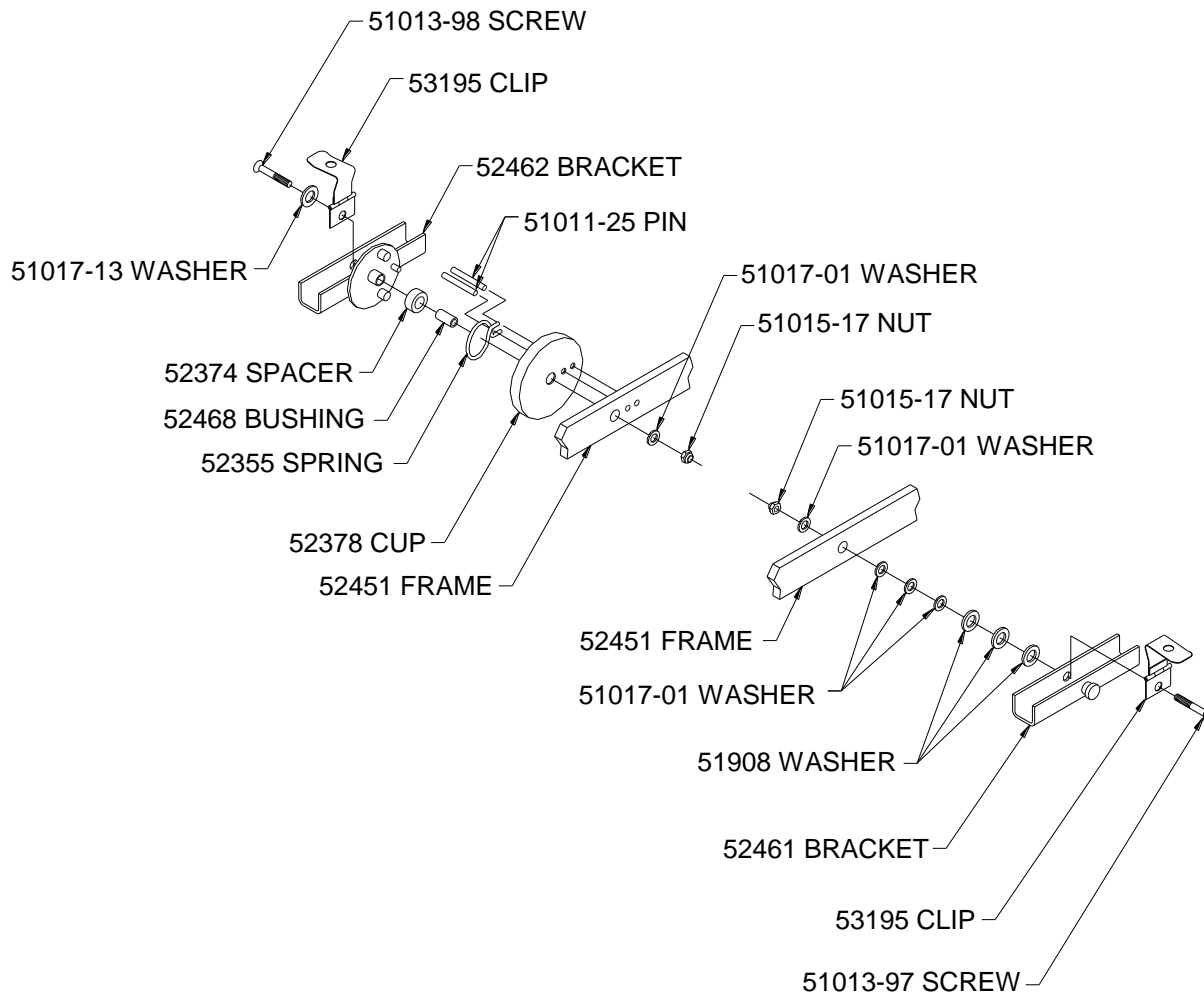


GIMBAL SPRING & PIVOT MECHANISM - BOTH ENDS
 -1 HPIII SINGLE BURNER ASSEMBLY

Figure SB6



GIMBAL SPRING & PIVOT MECHANISM - SIDES
ALL HP III SINGLE BURNER ASSEMBLIES



GIMBAL SPRING & PIVOT MECHANISM - ENDS
-2 & -4 HPIII SINGLE BURNER ASSEMBLIES

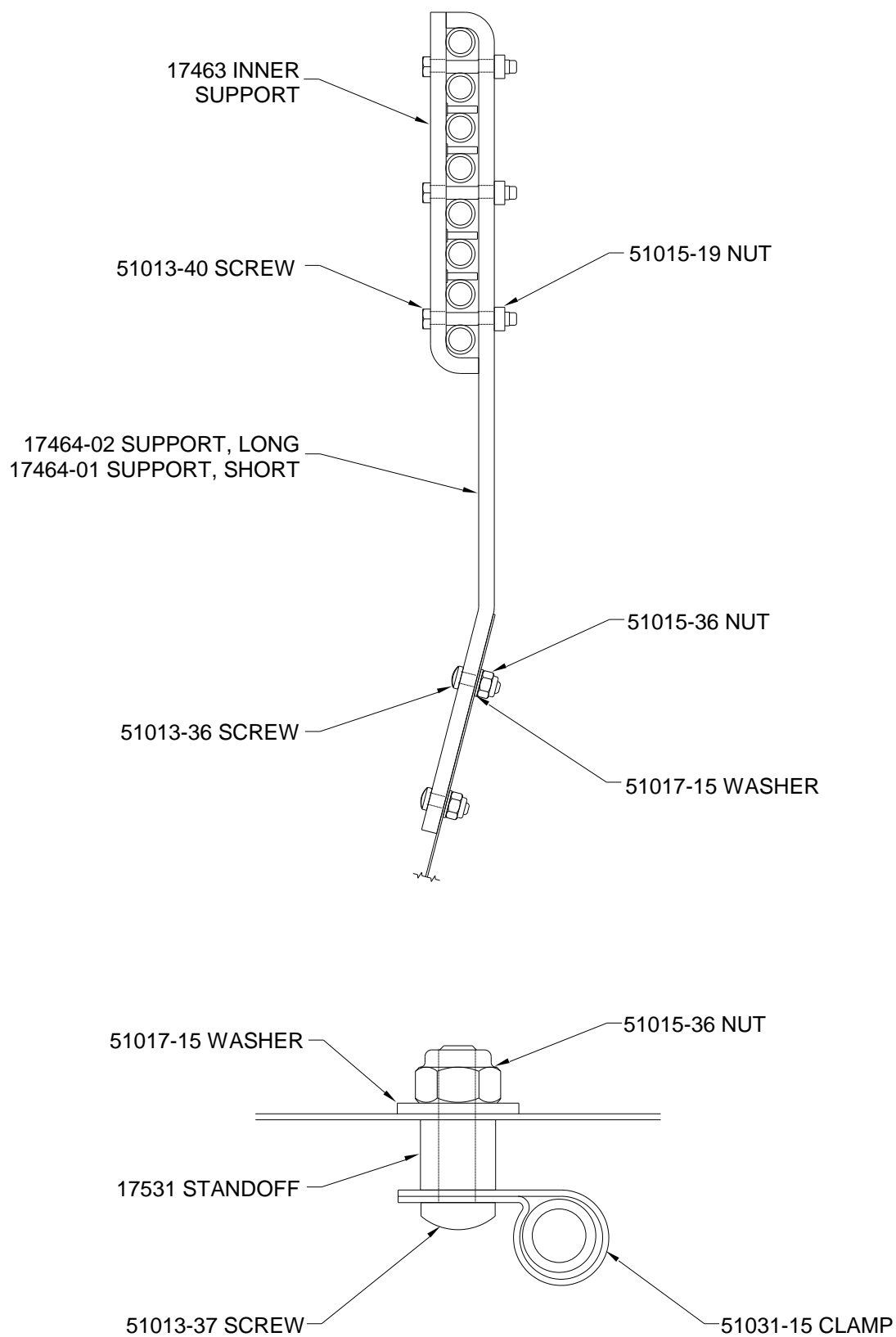


Figure SB9

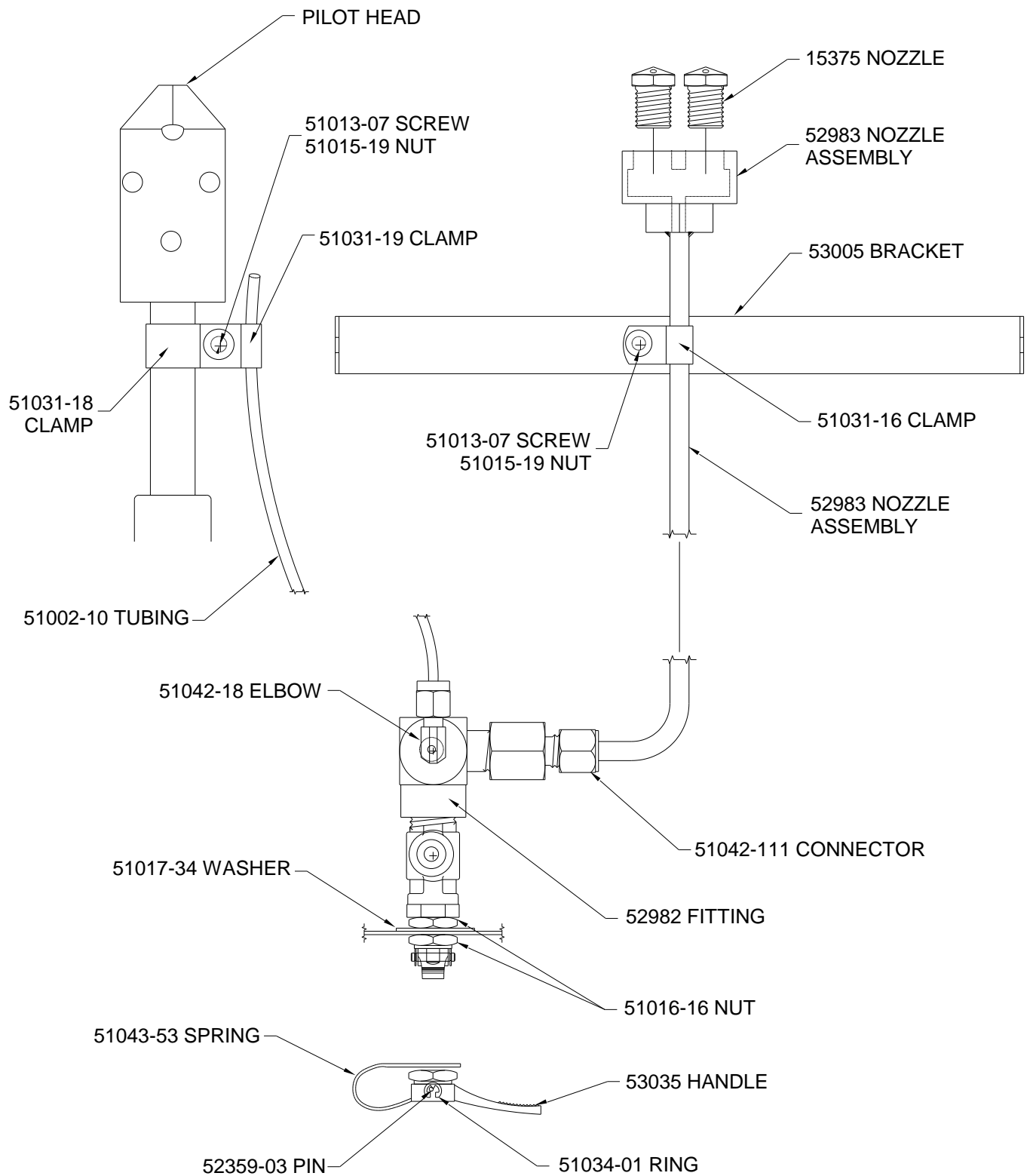


Figure SB10