

# RAVEN

## AEROSTAR

### **PARTS MANUAL\***

Rally Burner  
Model "HP2R"  
P/N 17399

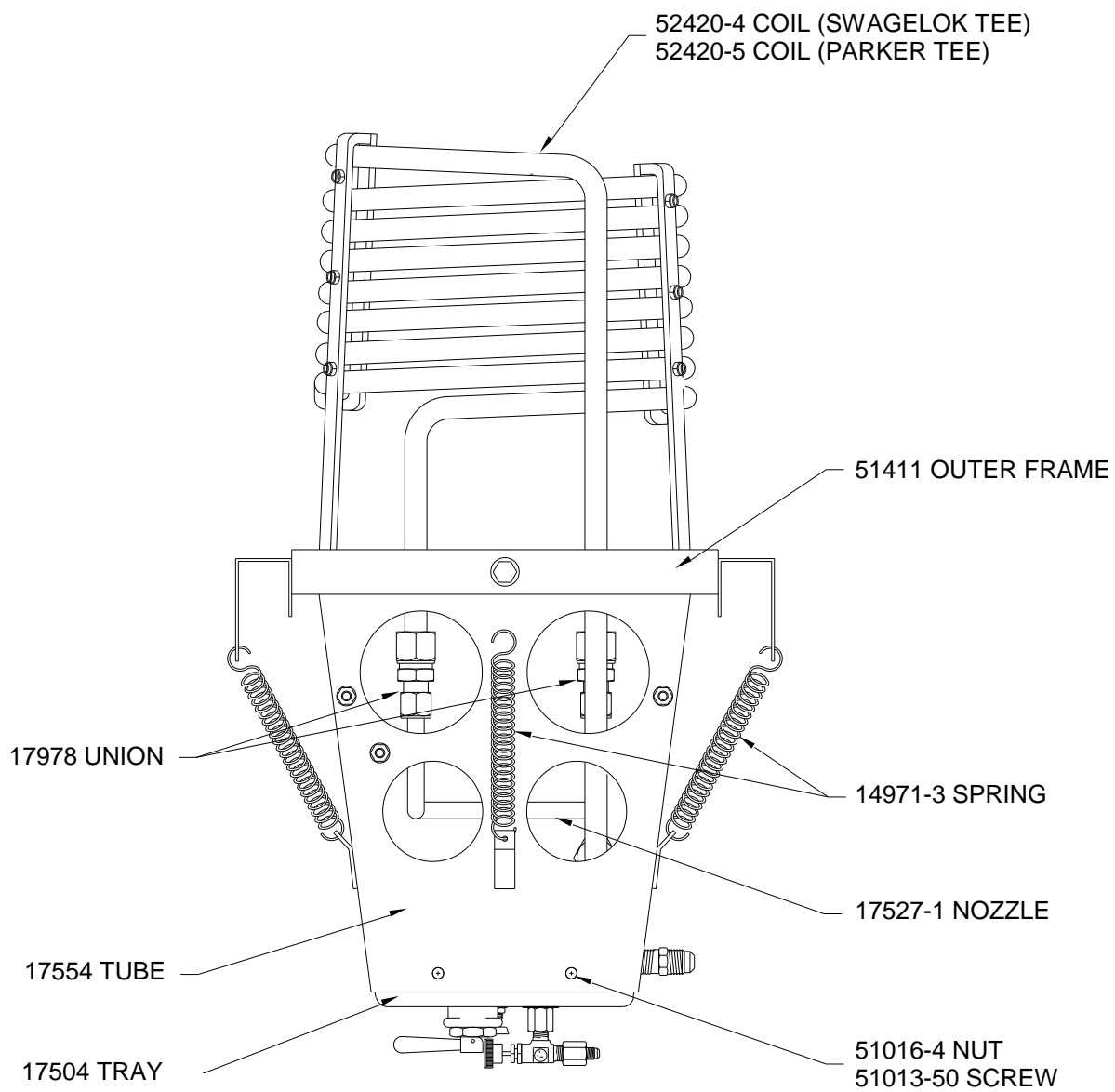
Dual Inlet  
Model "HP2R"  
P/N 54164

February 1, 2012

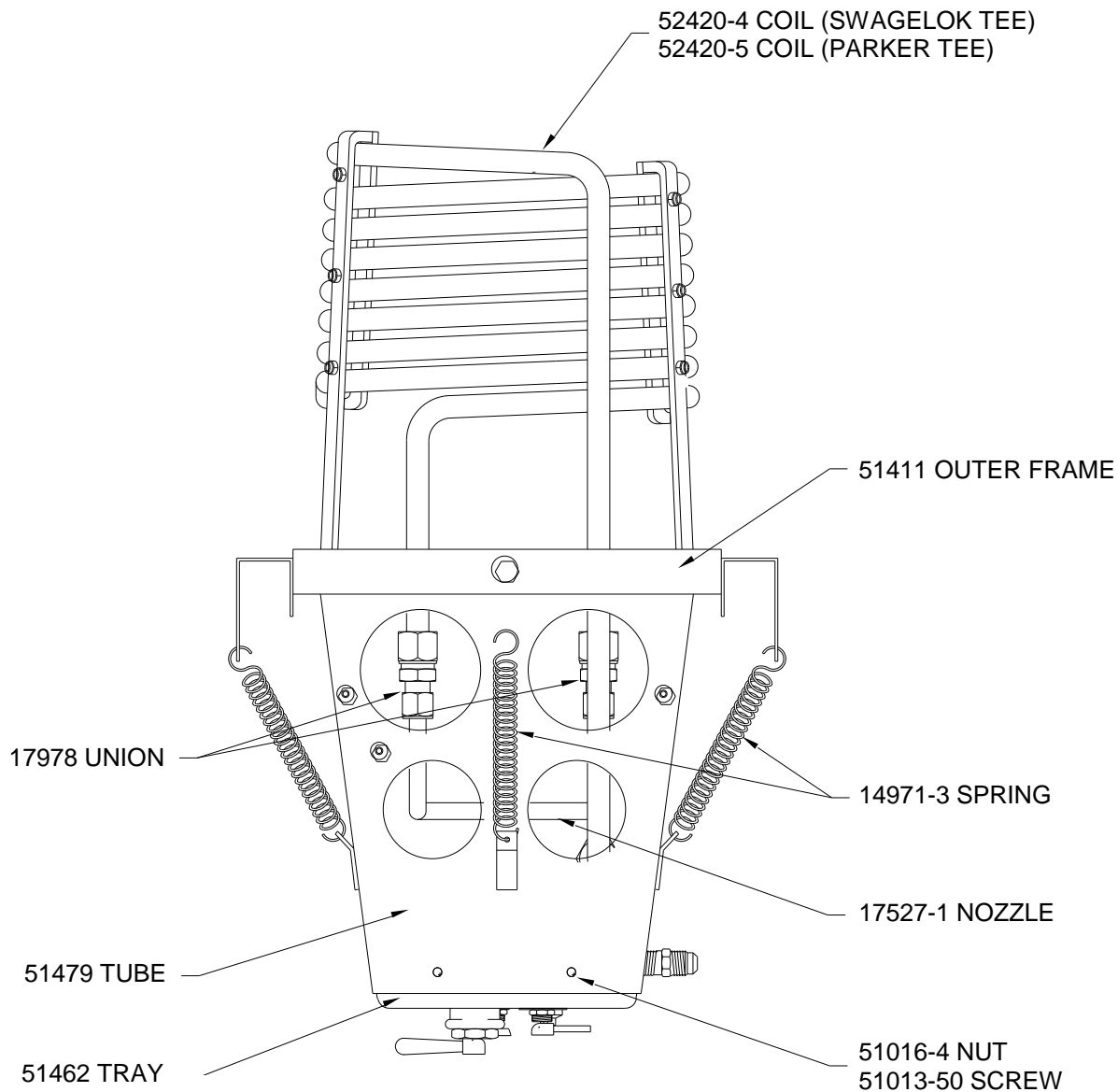
*\*Parts subject to availability; please contact Aerostar for parts availability and prices.*

PART NUMBER	DESCRIPTION	UNITS
1001 - 1	VALVE, HOKE NO HANDLE	EA.
13136 - 3	SPACER, GIMBAL	OBSOLETE
14971 - 3	SPRING, EXTENSION LEE LE-069F-6S	EA.
16557	PILOT ORIFICE DRILLED	OBSOLETE
17463	COIL SUPPORT INNER, REV. C	EA.
17464 - 1	COIL SUPPORT OUTER-SHORT	EA.
17464 - 2	COIL SUPPORT OUTER-LONG	EA.
17504	TRAY BURNER	OBSOLETE
17505	FITTING, MODIFIED TEE	EA.
17506	WASHER, RUBBER BLAST VALVE	EA.
17519	WASHER, BACKUP BLAST VALVE	EA.
17527 - 1	NOZZLE COIL W/ASPIRATOR	OBSOLETE
17529	BRACKET, VALVE HOLD DOWN	OBSOLETE
17531	CLAMP, STANDOFF COIL	EA.
17554	SQUARE TUBE, HP2R	OBSOLETE
17978	UNION RESTRICTED	OBSOLETE
51002 - 10	COPPER TUBE .125OD X .030 WALL	FT.
51012 - 5	POP RIVET AD42BS	EA.
51013 - 36	SCREW, MACHINE 10-32 X 5/8	EA.
51013 - 37	SCREW, MACHINE 10-32 X 3/4	EA.
51013 - 40	SCREW, 10-32 X 1 1/2 HEX HEAD SS	EA.
51013 - 48	SCREW, MACHINE 10-32 X 3/8	EA.
51013 - 50	SCREW, PAN HEAD 10-24 X 3/8	EA.
51013 - 75	SCREW, FLAT HEAD MACHINE 10-32 X 5/8	EA.
51013 - 84	SCREW, PAN HD 2-56 X 1IN	EA.
51015 - 17	NUT, MS20365-428C 1/4-28	EA.
51015 - 19	NUT, MS20500-1032 HI TEMP	EA.
51015 - 35	NUT, LOCKING 2-56	OBSOLETE
51016 - 4	NUT, SPEED ARDEN C8044-1024-3B	EA.
51016 - 13	NUT, S.S. JAM NUT	OBSOLETE
51017 - 11	WASHER, 9/16" S.S.	OBSOLETE
51017 - 12	WASHER, 5/8 AN960C1016L	EA.
51017 - 15	WASHER, SS MS15795-841	EA.
51017 - 27	WASHER, 1/4	OBSOLETE
51017 - 28	WASHER, PLAIN 7/16	OBSOLETE
51017 - 30	SPACER, TEFLON 161 X. 250 X .050	EA.
51017 - 34	WASHER, 1.125OD X .450 ID X .048 THK	EA.
51017 - 35	WASHER, #2	OBSOLETE
51017 - 43	REGULATOR SHIM WASHER	EA.
51027 - 16	FIBERGLASS SLEEVE PIEZO	FT.
51031 - 15	CLAMP, LOOP TA715SS06	EA.
51034 - 5	O-RING, BACKUP (TEFLON SPLIT RING)	EA.
51034 - 6	O-RING, PARKER 2-007-N103-7	EA.
51040 - 17	KNOB, RED METER PHEN-4J-P5	EA.
51040 - 18	KNOB, GREEN PILOT PHEN-4J-P5	EA.
51040 - 55	GASKET, COPPER	EA.
51042 - 4	FITTING, STREET ELBOW 90 DEG.	EA.
51042 - 7	FITTING, FEMALE TEE 1/4 PIPE	EA.
51042 - 11	FITTING, ELBOW 90 DEG. SWIVEL 2047-4-4S	EA.
51042 - 12	FITTING, ADAPTER REDUCING 2083-6-4S	EA.
51042 - 13	FITTING, FEMALE TEE (SPECIAL) 8-86	OBSOLETE
51042 - 14	BULKHEAD	OBSOLETE
51042 - 15	FITTING, ADAPTER PIPE/JIC 2021-4-6S	EA.
51042 - 16	REDUCER	OBSOLETE
51042 - 17	FITTING, FEMALE ELBOW 2-25BZ-B	EA.
51042 - 18	FITTING, MALE ELBOW 2-2CBZ-B	EA.

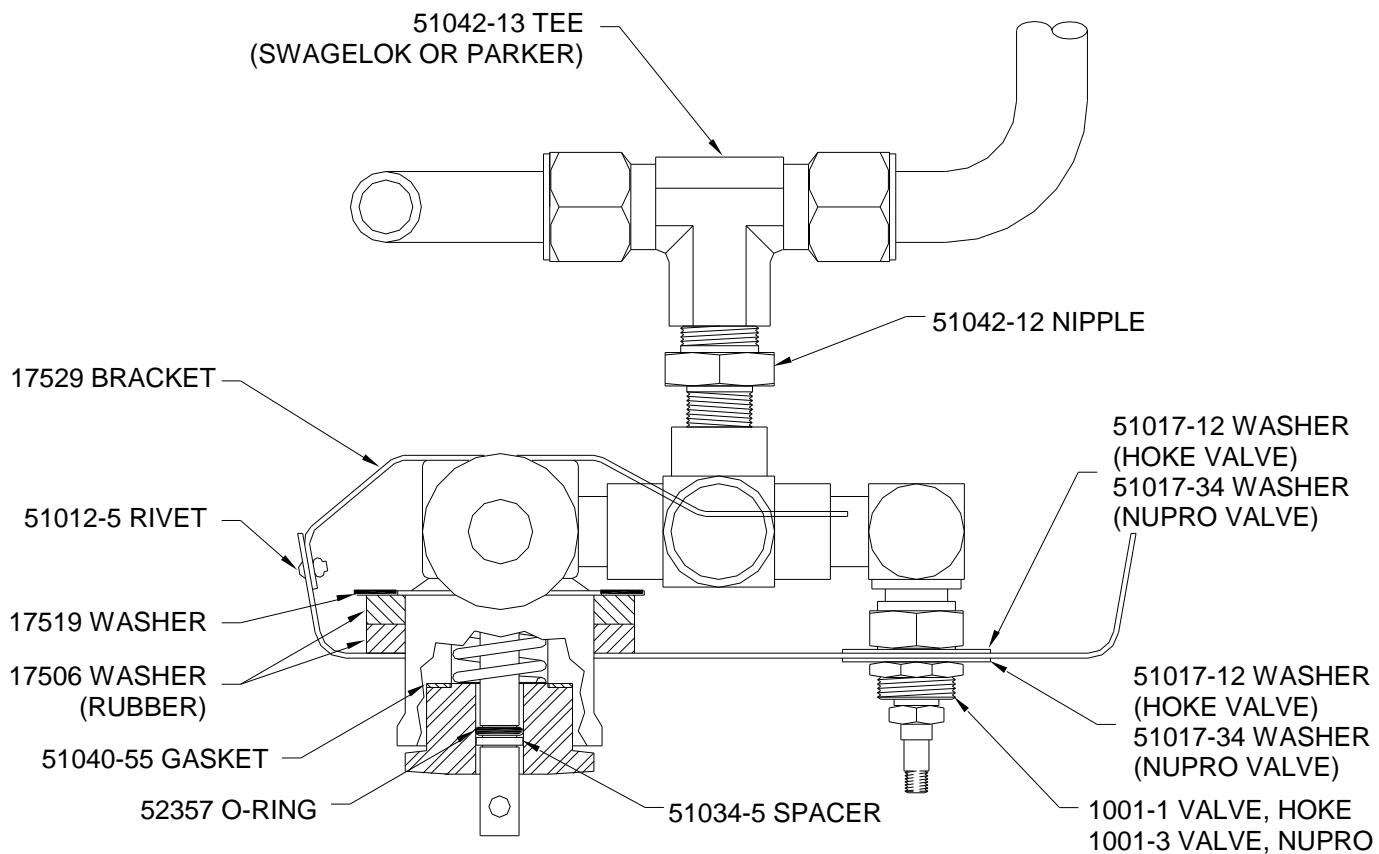
PART NUMBER	DESCRIPTION	UNITS
51042 - 19	PLUMBING, MALE PIPE ELBOW	OBSOLETE
51042 - 20	FITTING, HEX NIPPLE 2083-4-4S	EA.
51042 - 21	FITTING, CLOSE NIPPLE 2084-4S-7/8	EA.
51042 - 39	FITTING, ADAPTER PIP/JIC 2022-4-4S	EA.
51042 - 49	FITTING, ADAPTER STRAIGHT 2000-4-6B	EA.
51042 - 78	FITTING, 45 DEG. STREET ELBOW	OBSOLETE
51043 - 6	FILTER, METEX 52-0110-F071-04	EA.
51043 - 26	REGULATOR PISTON	OBSOLETE
51043 - 27	REGULATOR, SHERWOOD SELPAC YR3701BA	OBSOLETE
51043 - 32	VALVE, TOGGLE HANDLE ONLY SHERWOOD	OBSOLETE
51411	BURNER FRAME OUTER RALLY	OBSOLETE
51412	BURNER FRAME INNER RALLY	OBSOLETE
51462	TRAY, HP2R DUAL INLET	OBSOLETE
51470	PLUMBING, MODIFIED PIPE PLUG	OBSOLETE
51479	SQUARE TUBE, HP2R DUAL INLET	OBSOLETE
51865 - 2	VALVE, NUPRO B-4JNAR2 GREEN	EA.
51901	PILOT HEAD ASSEMBLY	EA.
51906	VALVE, PILOT TOGGLE HANDLE	OBSOLETE
51909	SLUG, PILOT	EA.
51911 - 1	WASHER, SLOTTED	OBSOLETE
51912	VALVE, MODIFIED HOKE	OBSOLETE
52357	O-RING, BLAST VALVE	EA.
52380	MODIFIED VALVE HP111	EA.
52420 - 4	HP11 COIL ASSY W/NUTS & FERS SW F	OBSOLETE
52420 - 5	HP11 COIL ASSY W/NUTS & FERS PARKER	OBSOLETE
52727	PRESSURE GAUGE KIT (REPLACEMENT WIKA)	EA.
52822	PIEZO IGNITER W/FIBERGLASS SLEEVE	EA.
53285	REGULATOR, FEMALE FITTING	EA.
53286	REGULATOR, MALE FITTING	EA.
53287	REGULATOR, STEM SEAL	EA.



BURNER ASSEMBLY  
HP2R  
Figure 2RB1



BURNER ASSEMBLY  
HP2R DUAL INLET  
Figure 2RB2



### FUEL INLET SUPPORT, HP2R DUAL INLET

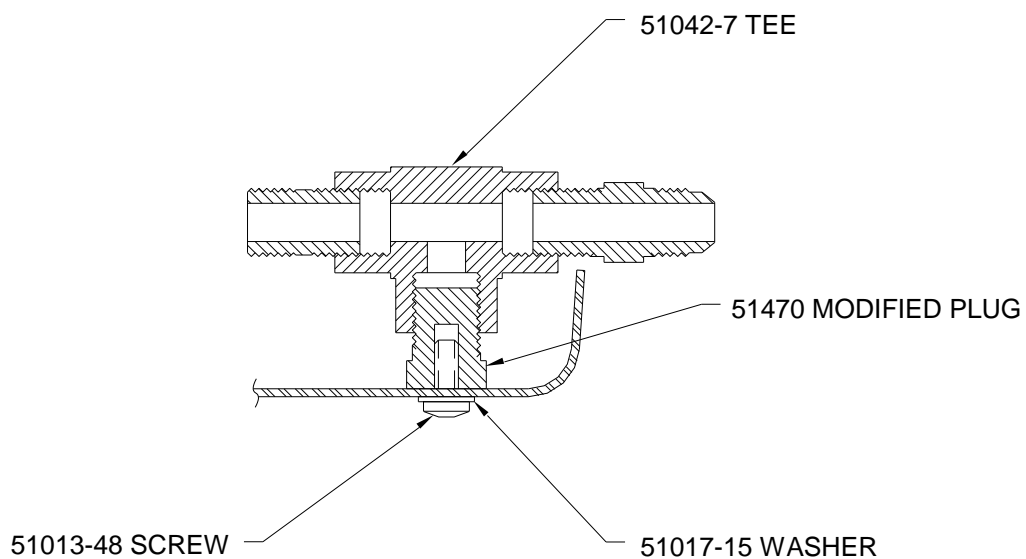
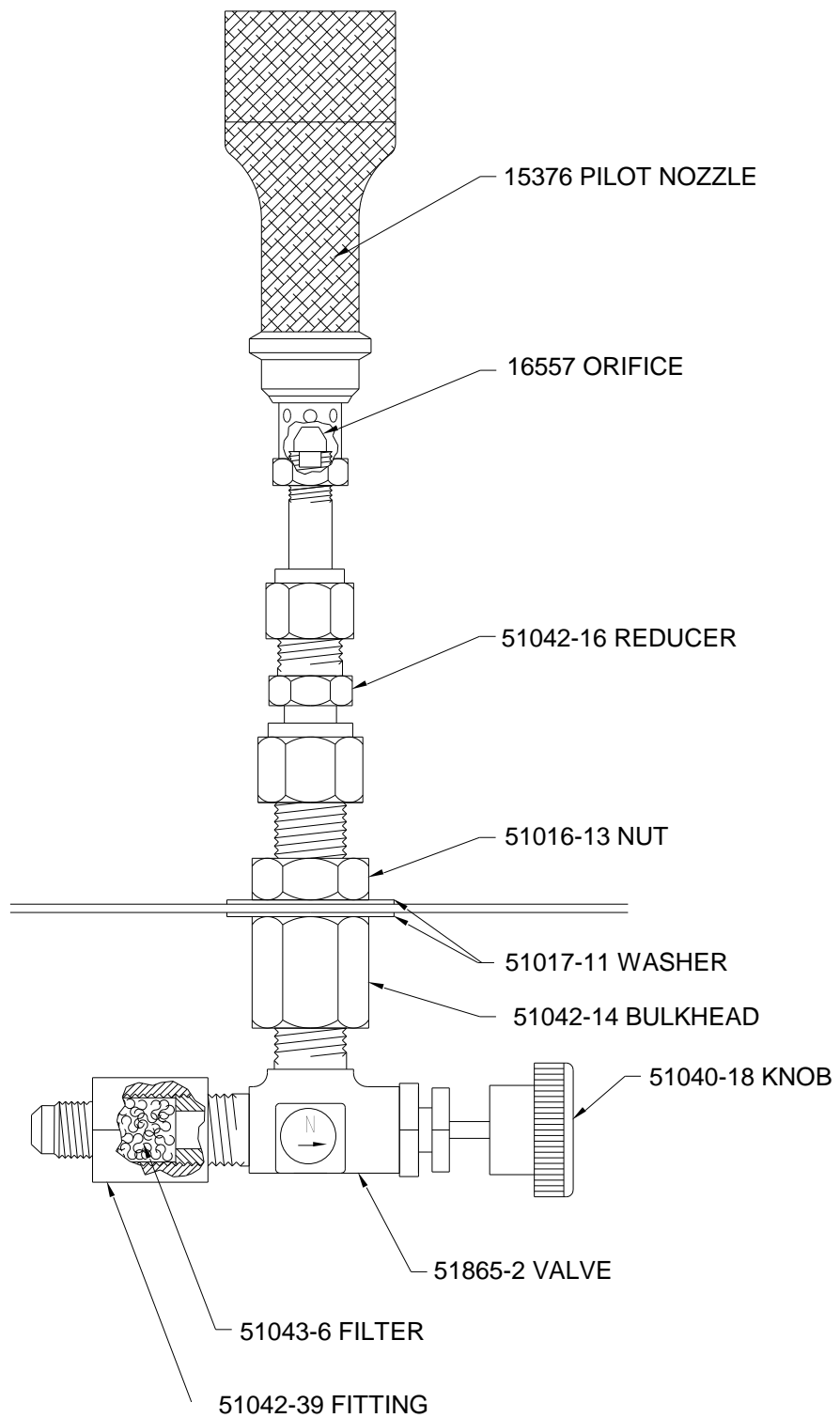
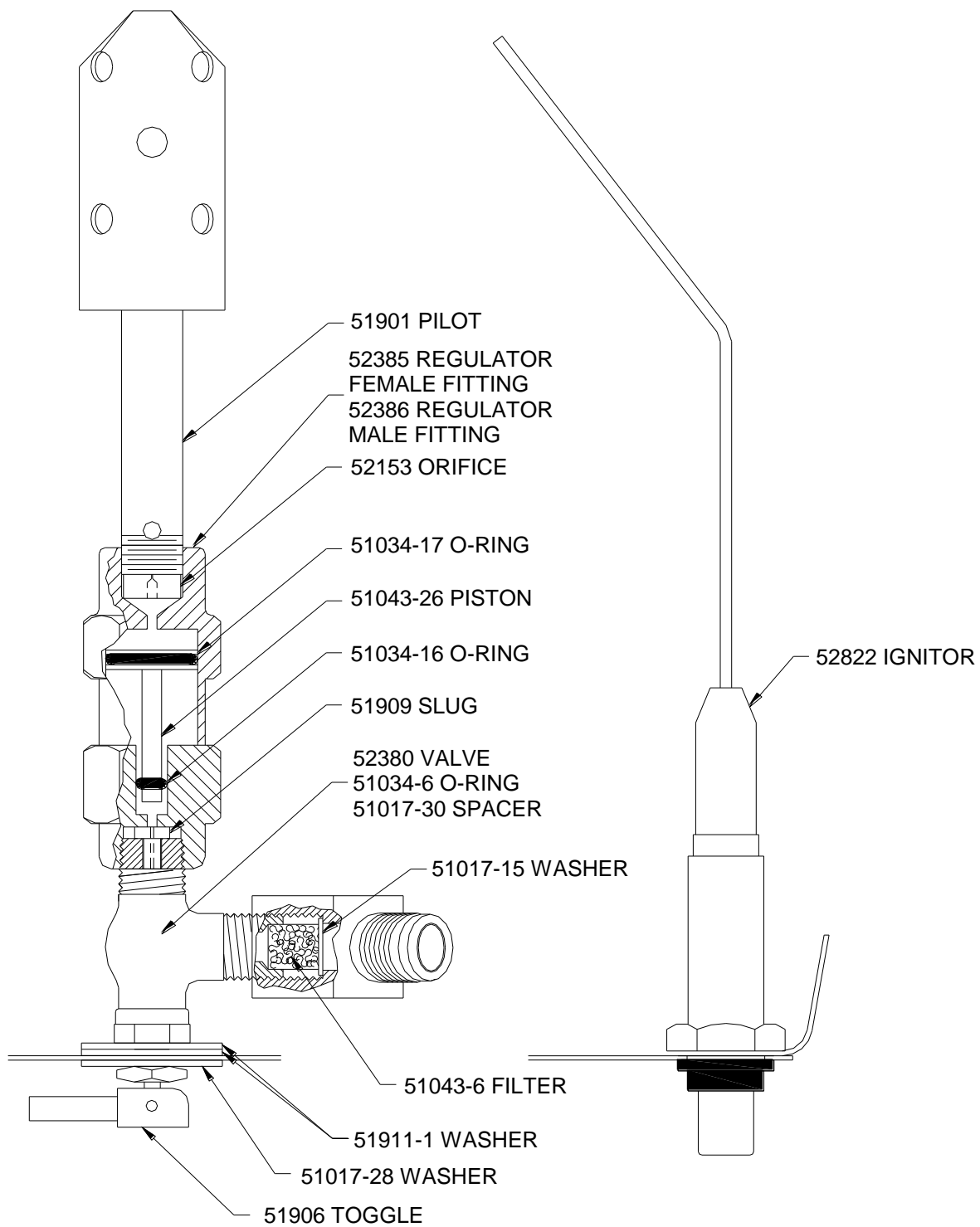


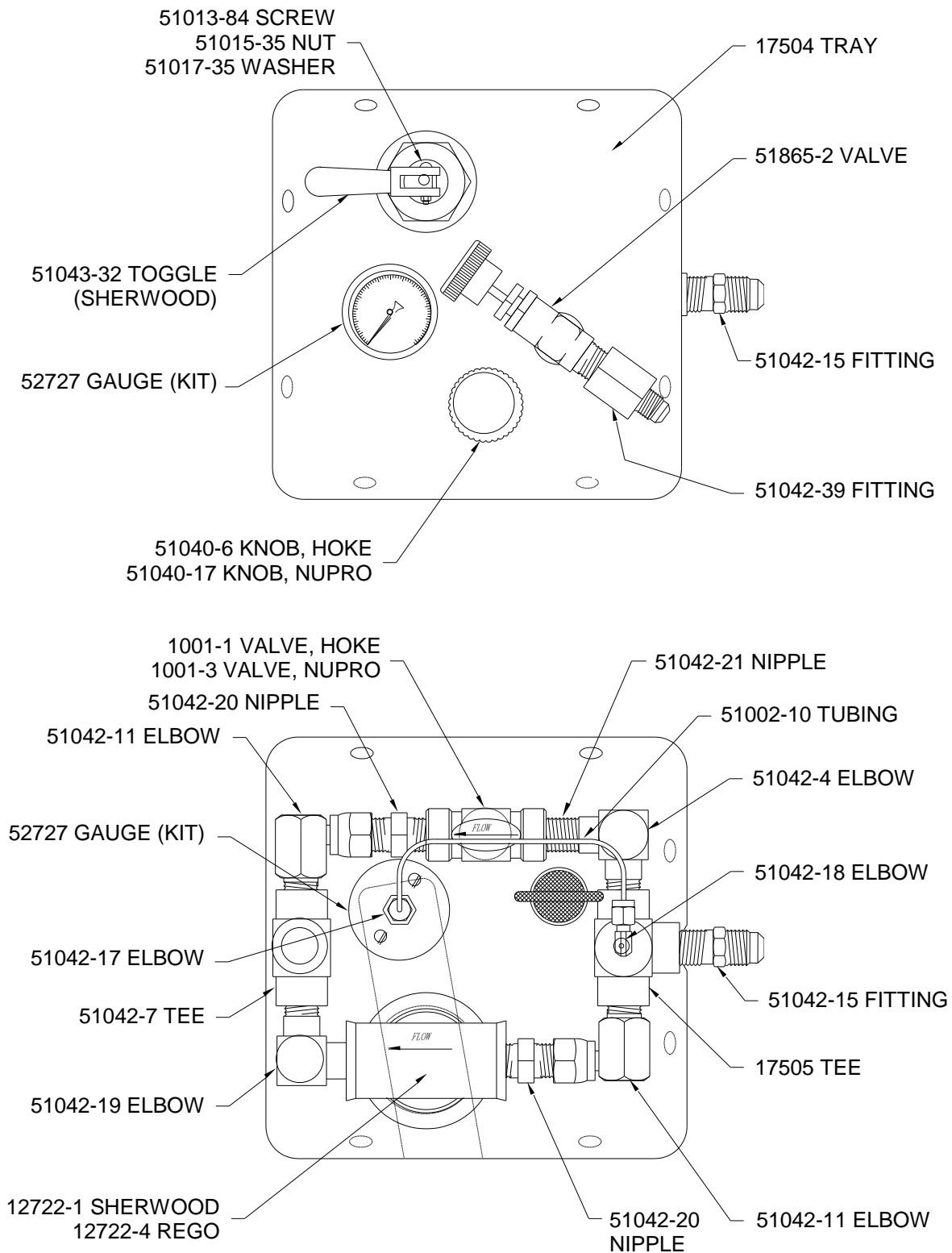
Figure 2RB3



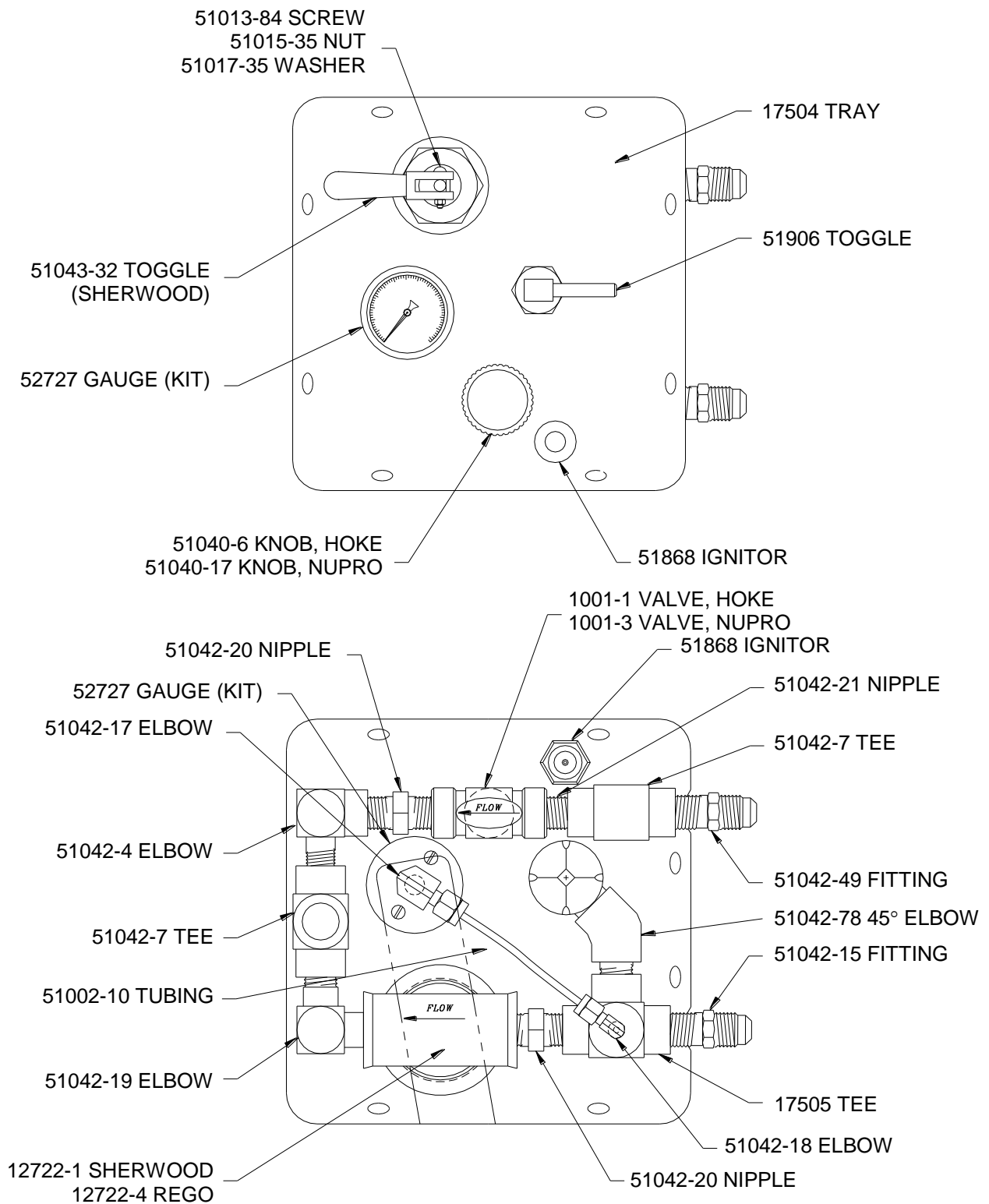
PILOT ASSEMBLY  
HP2R  
Figure 2RB4



PILOT ASSEMBLY  
HP2R DUAL INLET  
Figure 2RB5



HP2R  
Figure 2RB6



HP2R DUAL INLET  
Figure 2RB7

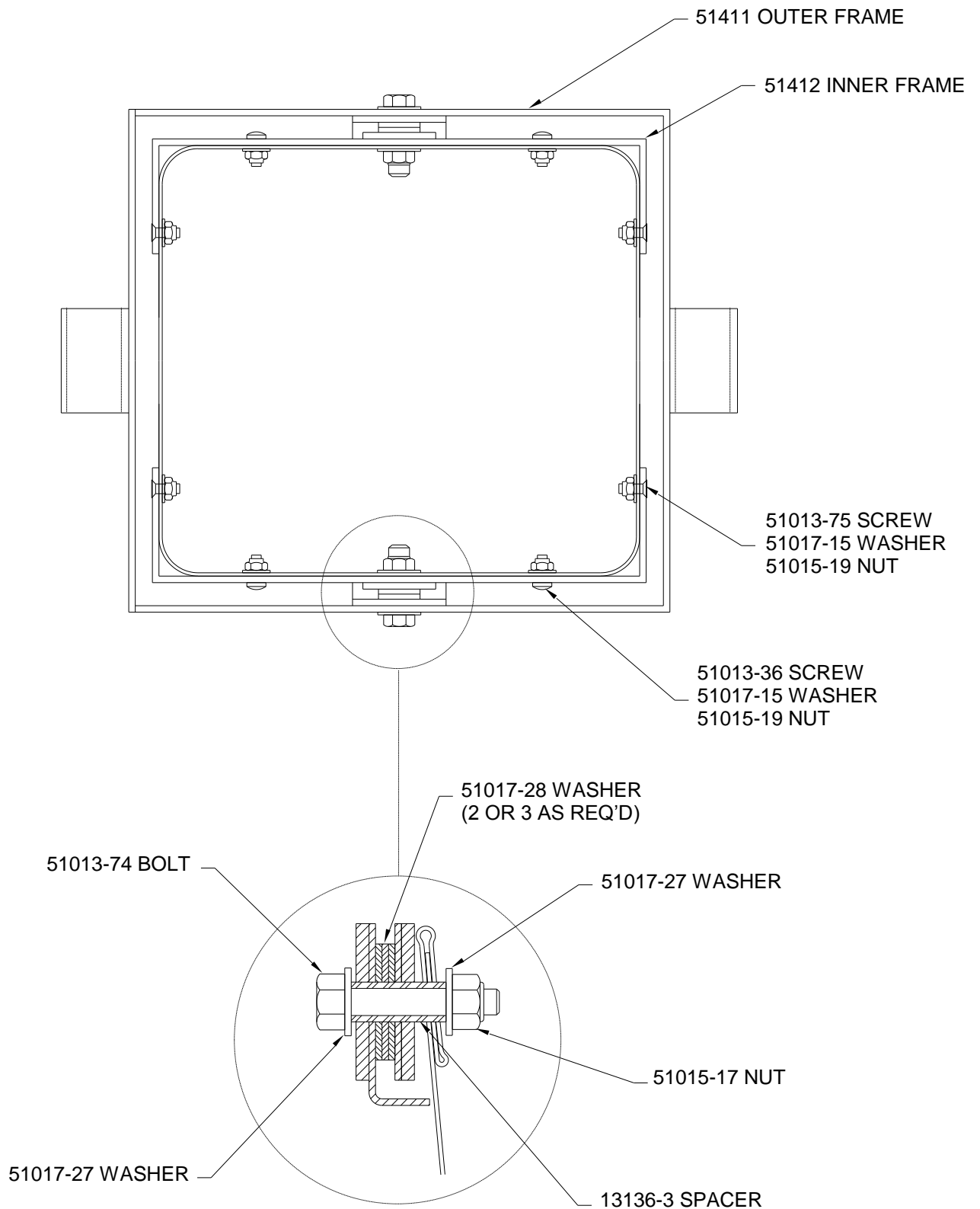


Figure 2RB8

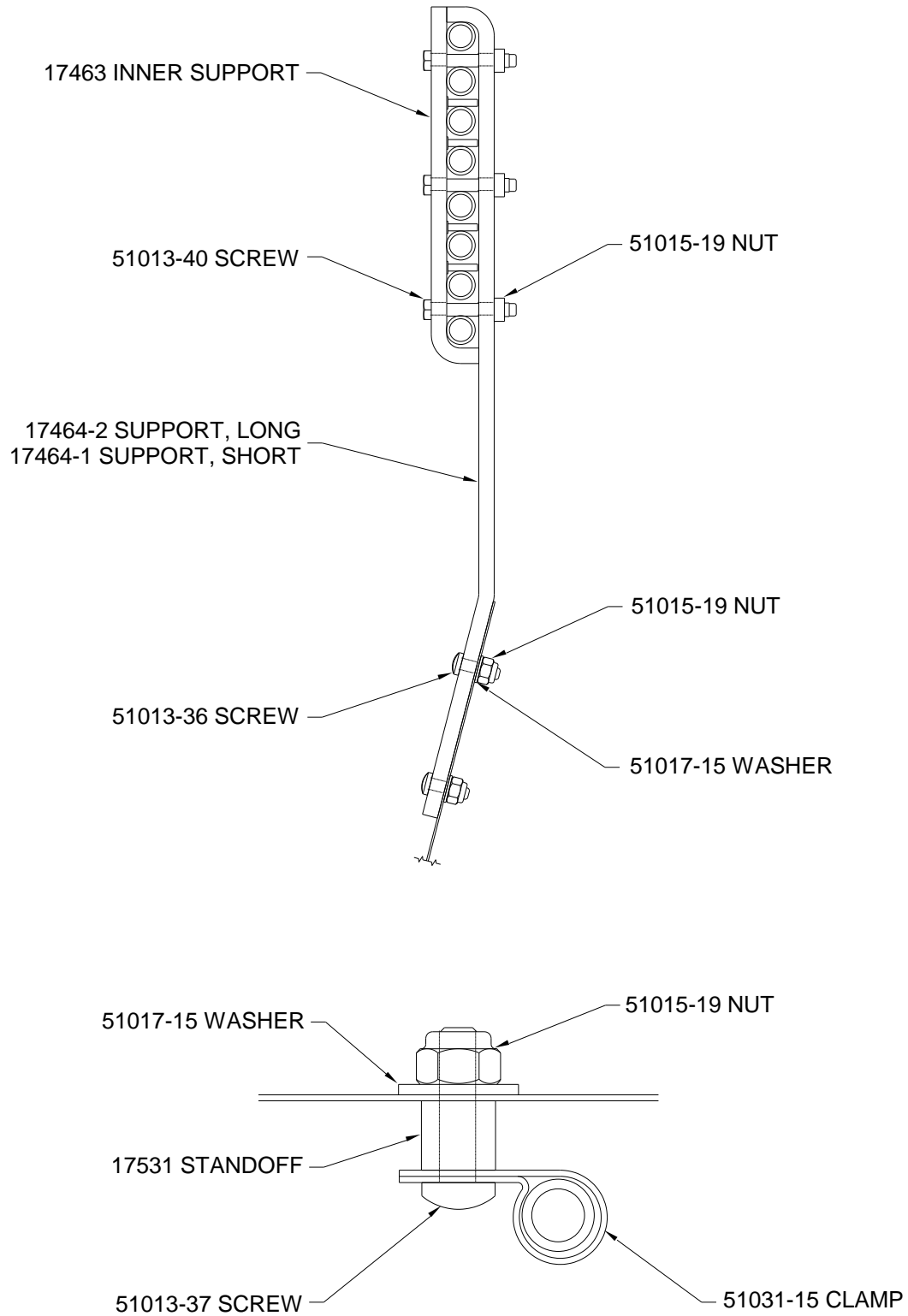


Figure 2RB9