

RAVEN

AEROSTAR

PARTS MANUAL

Aurora Stretch Gondola

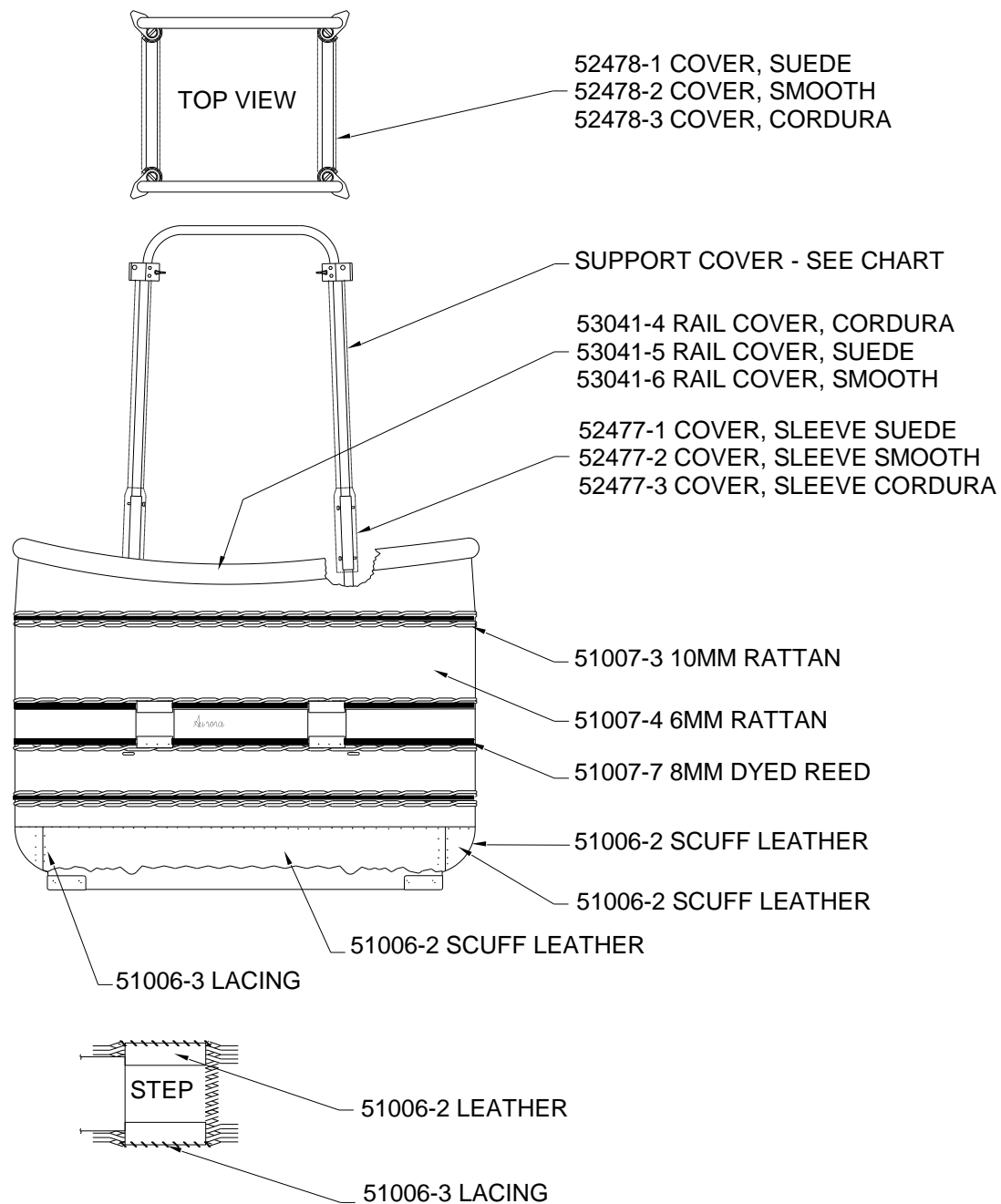
Model "ELSS"

P/N 53095

February 1, 2012

PART NUMBER	DESCRIPTION	UNITS
12593	STRAP, TANK H20 ASSY	EA.
12593 - 4	STRAP W/O BUCKLE CW & CWS	EA.
14571	STRAP ASSY TANK V15 / V18	EA.
51003 - 1	FOAM, THERMAL CELL NOMACO C78A	OBSOLETE
51003 - 7	TUBING, POLY ACCENTS (100 FT. ROLLS)	FT.
51003 - 55	FOAM, 3W301 3/4 X 1 3/8	OBSOLETE
51003 - 82	BARB CONNECTOR FOR POLY WICKER	EA.
51006 - 2	LEATHER, MOCCASIN COWHIDE	OBSOLETE
51006 - 3	BROWN LACING	FT.
51007 - 3	WICKER, 9-10 MM NATURAL KOOBOO RATAN	LB.
51007 - 4	WICKER, 4-7 MM NATURAL KOOBOO RATAN	LB.
51007 - 7	WICKER, DYED 8 MM ROUND REED	OBSOLETE
51007 - 17	NYLON LACING, #381 TASLN, ST/684 BLACK/BROWN	FT.
51013 - 59	BOLT, AIRCRAFT BOLT AN3-16A	EA.
51013 - 83	BOLT, AIRCRAFT AN3-17A	EA.
51013 - 108	BOLT, AN4-20A	EA.
51014 - 13	SCREW, WOOD #8 X 1	EA.
51014 - 22	SCREW, WOOD 8 X 5/8 SQUARE DRIVE	EA.
51014 - 33	SCREW, WOOD COMBINATION #8 X 5/8	EA.
51015 - 1	NUT, MS20365-1032A 10-32	EA.
51015 - 10	NUT, LOCKING MS20365-428A	EA.
51015 - 24	NUT, THIN 21NTE-040 ESNA	EA.
51017 - 2	WASHER, 1/4 PLN PLATED STL	EA.
51017 - 5	WASHER, PLAIN #10	EA.
51017 - 18	WASHER, 5/16 CAD PLATED	EA.
51019 - 33	BOLT, ELEVATOR 1/4-20 X 2 1/2 IN	EA.
51038 - 5	FIRE EXTINGUISHER	OBSOLETE
51040 - 47	U-CLIPS FOR POLY CARBONATE WICKER SPLICE	EA.
51054 - 49	SAFETY WALK, 2"	FT.
51093 - 1	BAG, ACCESSORY SUEDE	OBSOLETE
51093 - 2	BAG, ACCESSORY SMOOTH	OBSOLETE
51093 - 3	BAG, ACCESSORY CORDURA	OBSOLETE
52133	COVER, HOSE, CORDURA, ELS, RWS	OBSOLETE
52143 - 11	COVER, CORDURA ELS #2 & 4	OBSOLETE
52143 - 12	COVER, CORDURA ELS #3	OBSOLETE
52143 - 13	COVER, SUEDE LEATHER SUPPORT TUBE ELS #2 & 4	OBSOLETE
52143 - 14	COVER, SUEDE LEATHER SUPPORT TUBE ELS #3	OBSOLETE
52143 - 15	COVER, SMOOTH LEATHER ELS #2 & 4	OBSOLETE
52143 - 16	COVER, SMOOTH LEATHER ELS #3	OBSOLETE
52144 - 8	COVER, SUEDE LEATHER SUPPORT TUBE ELS W/FLAP	OBSOLETE
52144 - 9	COVER, SMOOTH LEATHER ELS W/FLAP	OBSOLETE
52144 - 10	COVER, CORDURA ELS W/FLAP	OBSOLETE
52145	STEP STIFFENER, LOWER	EA.
52163	QUICK RELEASE PIN WITH RETAINER	EA.
52249	FIRE EXTINGUISHER POUCH	OBSOLETE
52287	STRAP ASSEMBLY, 10 GAL TANK	OBSOLETE
52291 - 2	TANK COVER H25	OBSOLETE
52403	POLY CARBONATE WICKER SPLICE	EA.
52443 - 3	LOWER FRAME, ALUM. ELS/ELSS	EA.
52443 - 4	LOWER FRAME, STAINLESS STEEL ELS/ELSS	EA.
52444 - 3	SUPPORT TUBE, ALUM. ELS/ELSS	EA.
52444 - 4	SUPPORT TUBE, STAINLESS STEEL ELS/ELSS	EA.
52445 - 3	SIDE FRAME, ALUM. ELS/ELSS	EA.
52445 - 4	SIDE FRAME, STAINLESS STEEL ELS/ELSS	EA.
52450 - 1	INTERFACE TUBE [M] ELS/ELSS ALUMINUM	EA.
52450 - 2	INTERFACE TUBE [M] ELS/ELSS STAINLESS STEEL	EA.

PART NUMBER		DESCRIPTION	UNITS
52452		LOAD FITTING STANDARD ELS/ELSS	EA.
52453		TUBE, TANK SUPPORT, ELS/ELSS	EA.
52455		SKID, SHORT ELS/ELSS	EA.
52456		LOAD FITTING, CARABINER ELS/ELSS	EA.
52470		BOARD, FILLER ELS	EA.
52477	- 1	COVER, SUEDE LEATHER SLEEVES ELS	OBSOLETE
52477	- 2	COVER, SMOOTH LEATHER SLEEVES ELS	OBSOLETE
52477	- 3	COVER, CORDURA SLEEVES ELS	OBSOLETE
52478	- 1	COVER, SUEDE LEATHER SIDE FRAME ELS	OBSOLETE
52478	- 2	COVER, SMOOTH LEATHER SIDE FRAME ELS	OBSOLETE
52478	- 3	COVER, CORDURA SIDE FRAME ELS	OBSOLETE
52479		FIRE EXTINGUISHER	OBSOLETE
52985	- 1	TANK SHOE	EA.
53041	- 4	COVER, RAIL ELSS CORDURA	OBSOLETE
53041	- 5	COVER, RAIL ELSS SUEDE	OBSOLETE
53041	- 6	COVER, RAIL ELSS SMOOTH	OBSOLETE
53084		SKID, LONG SIDE ELSS	EA.
53085		FLOOR, ELSS	EA.
53086		SKID GUARD, POLY ELSS LONG	EA.
53088	- 1	ELSS SEAT H-25, CORDURA, LEFT	OBSOLETE
53088	- 2	ELSS SEAT H-25, SMOOTH, LEFT	OBSOLETE
53091		PIN, WIRE LOCK, STEEL (STAMPED "A")	EA.
53118	- 1	BACKREST, SMOOTH LEATHER, ELS, ELSS, CW, RWSW	OBSOLETE
53118	- 2	BACKREST, CORDURA ELS, ELSS, CW, RWSW	OBSOLETE



SUPPORT TUBE COVERS	CORNER 1 (with Flap)	CORNER 2	CORNER 3	CORNER 4
STANDARD (HOSE FLAP)	52133	N/A	N/A	N/A
CORDURA	52144-10	52143-11	52143-12	52143-11
SUEDE LEATHER	52144-8	52143-13	52143-14	52143-13
SMOOTH LEATHER	52144-9	52143-15	52143-16	52143-15

Figure ELSS1

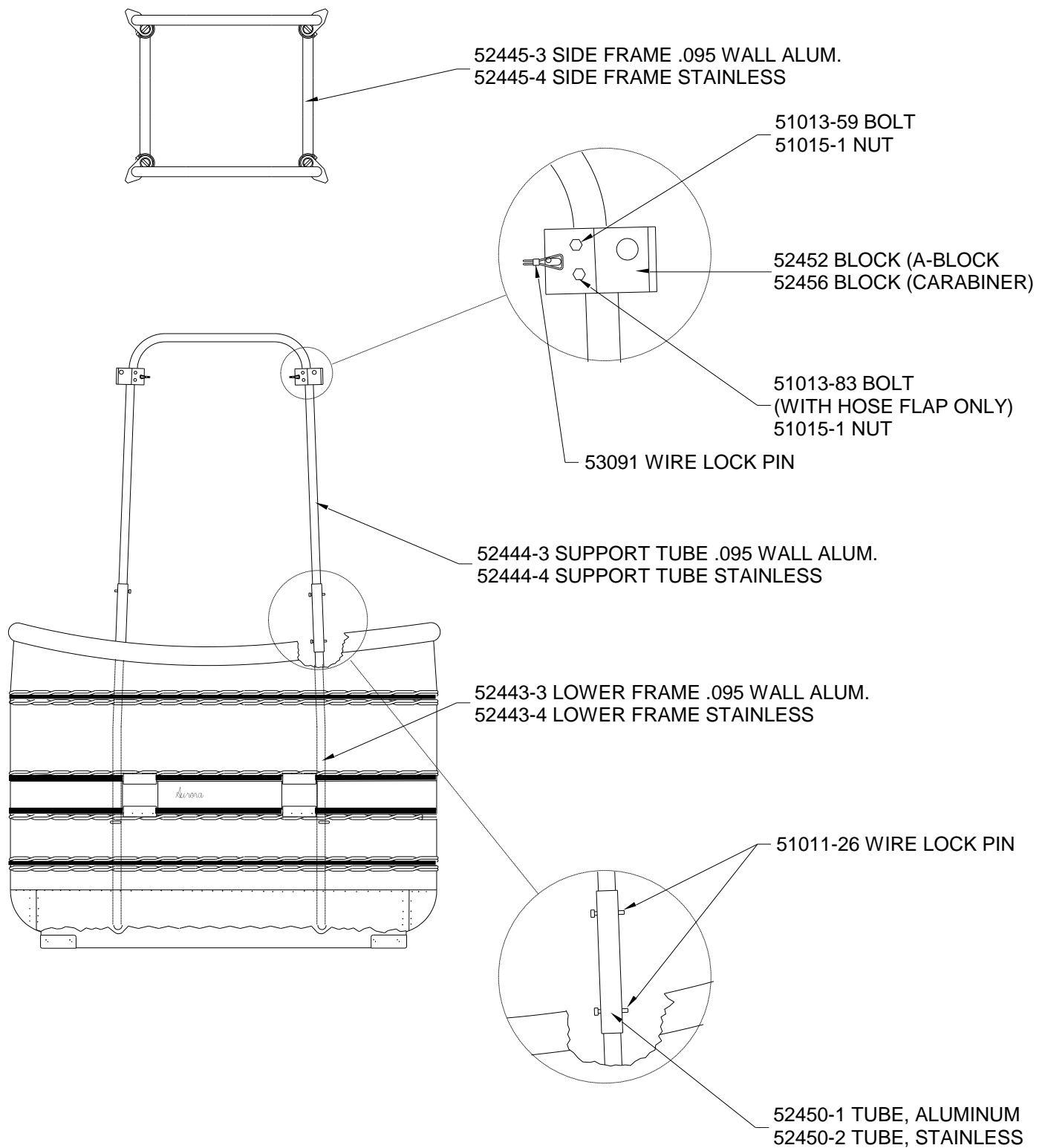


Figure ELSS2

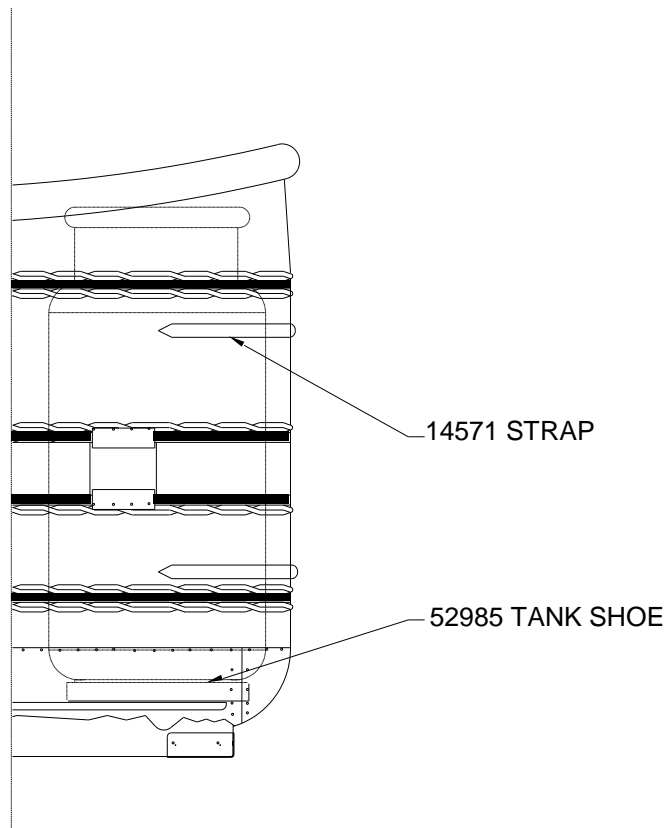
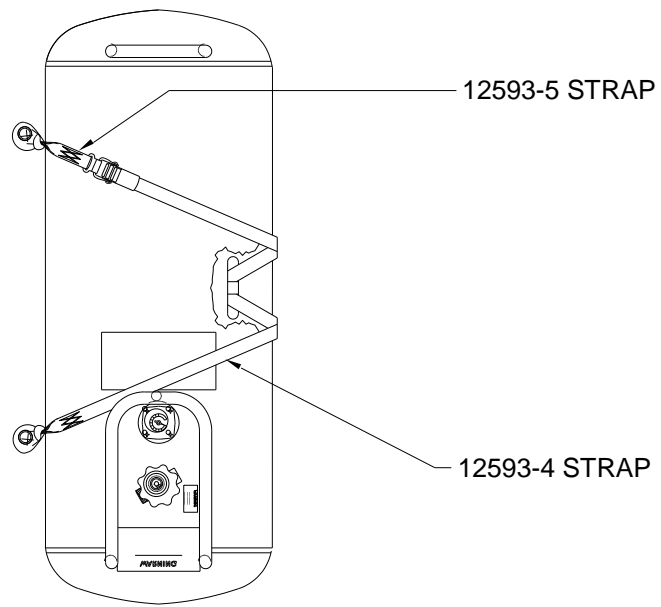


Figure ELSS3

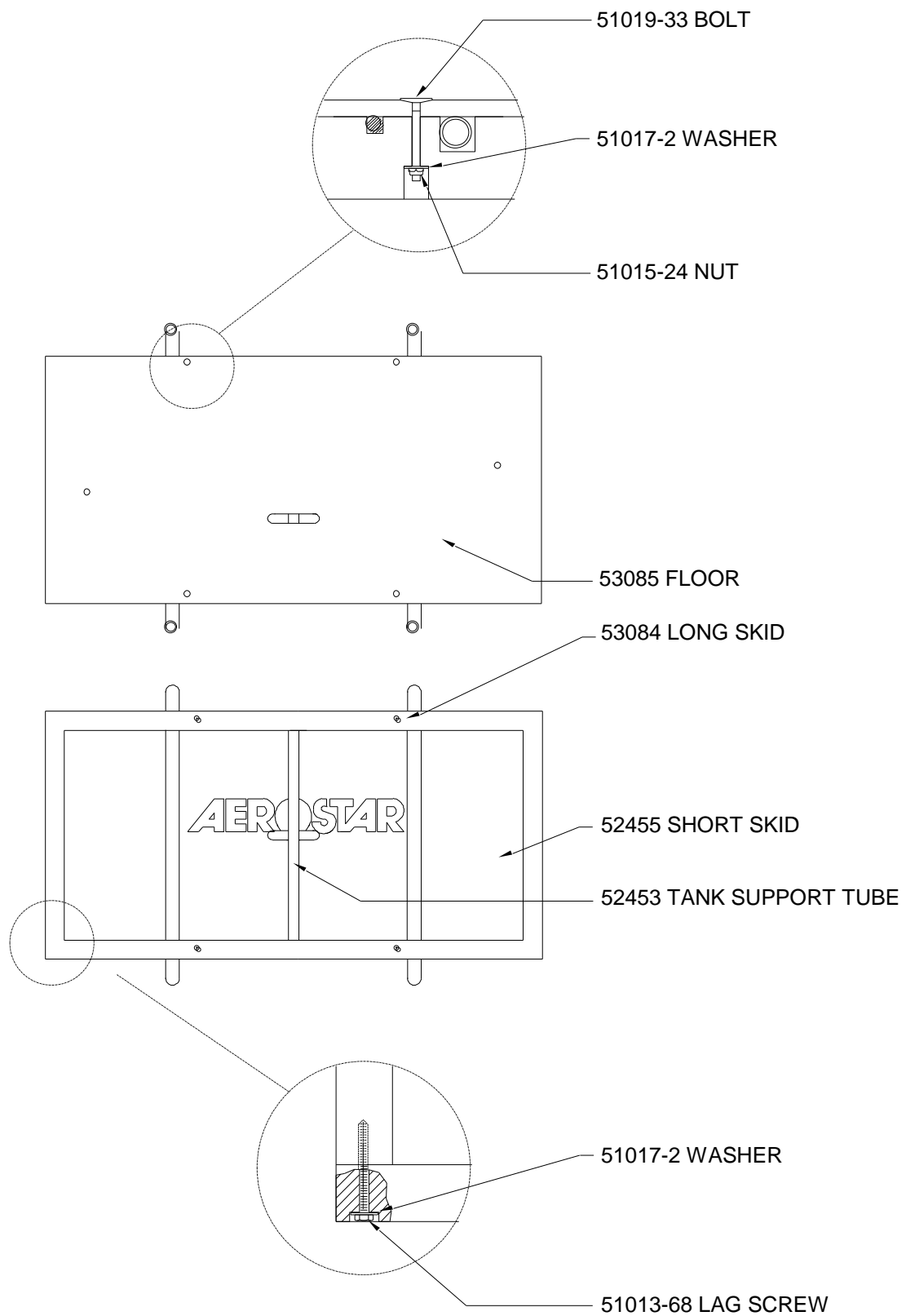


Figure ELSS4